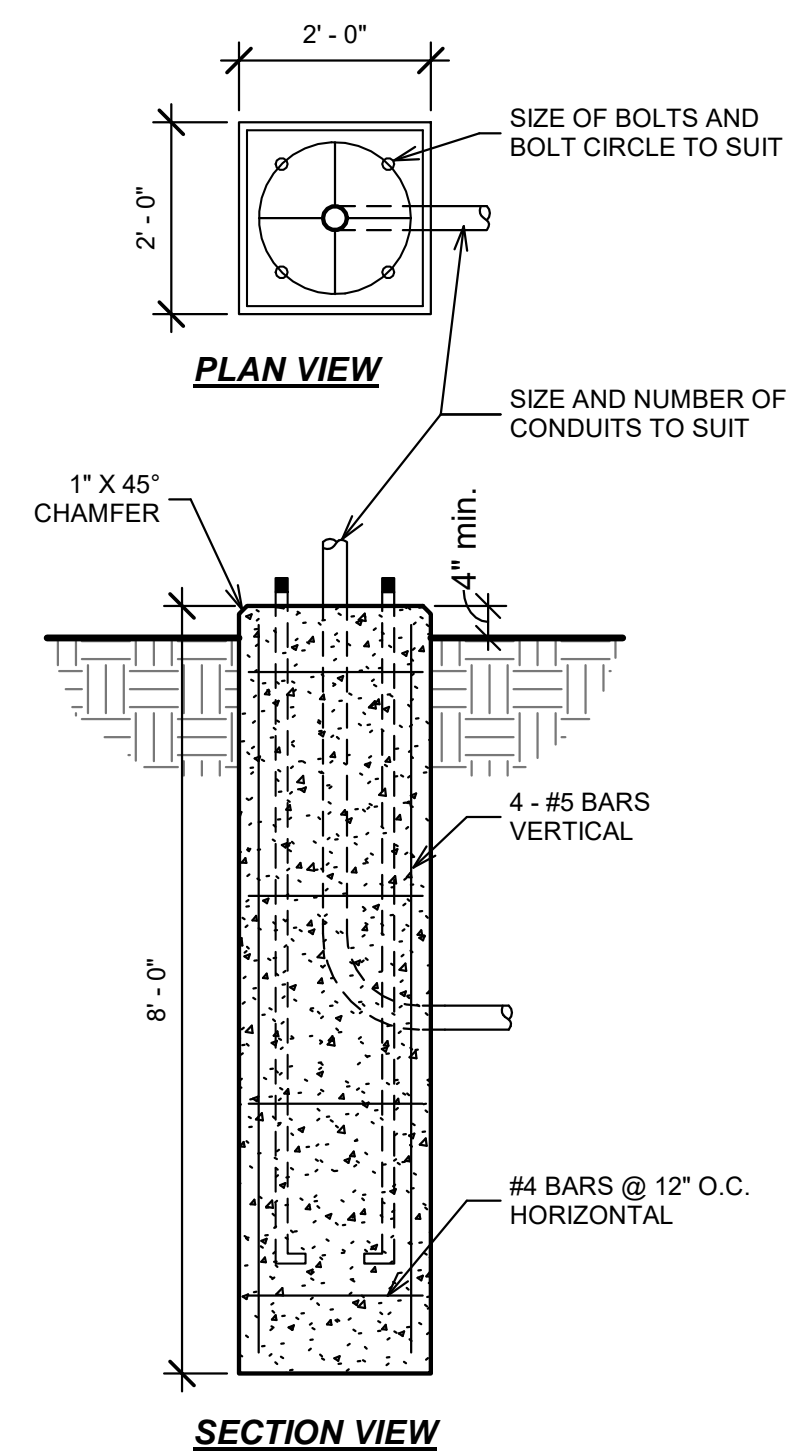


2 ORNAMENTAL TREE PLANTING DETAIL
7 SCALE: 1/4" = 1'-0"

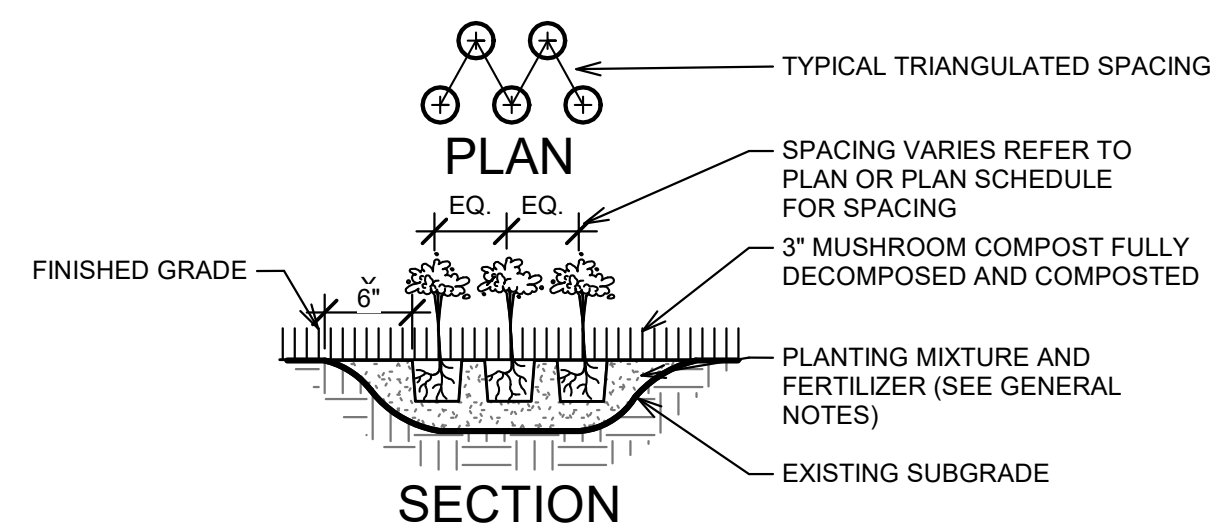
1
7

LARGE SHRUB PLANTING DETAIL

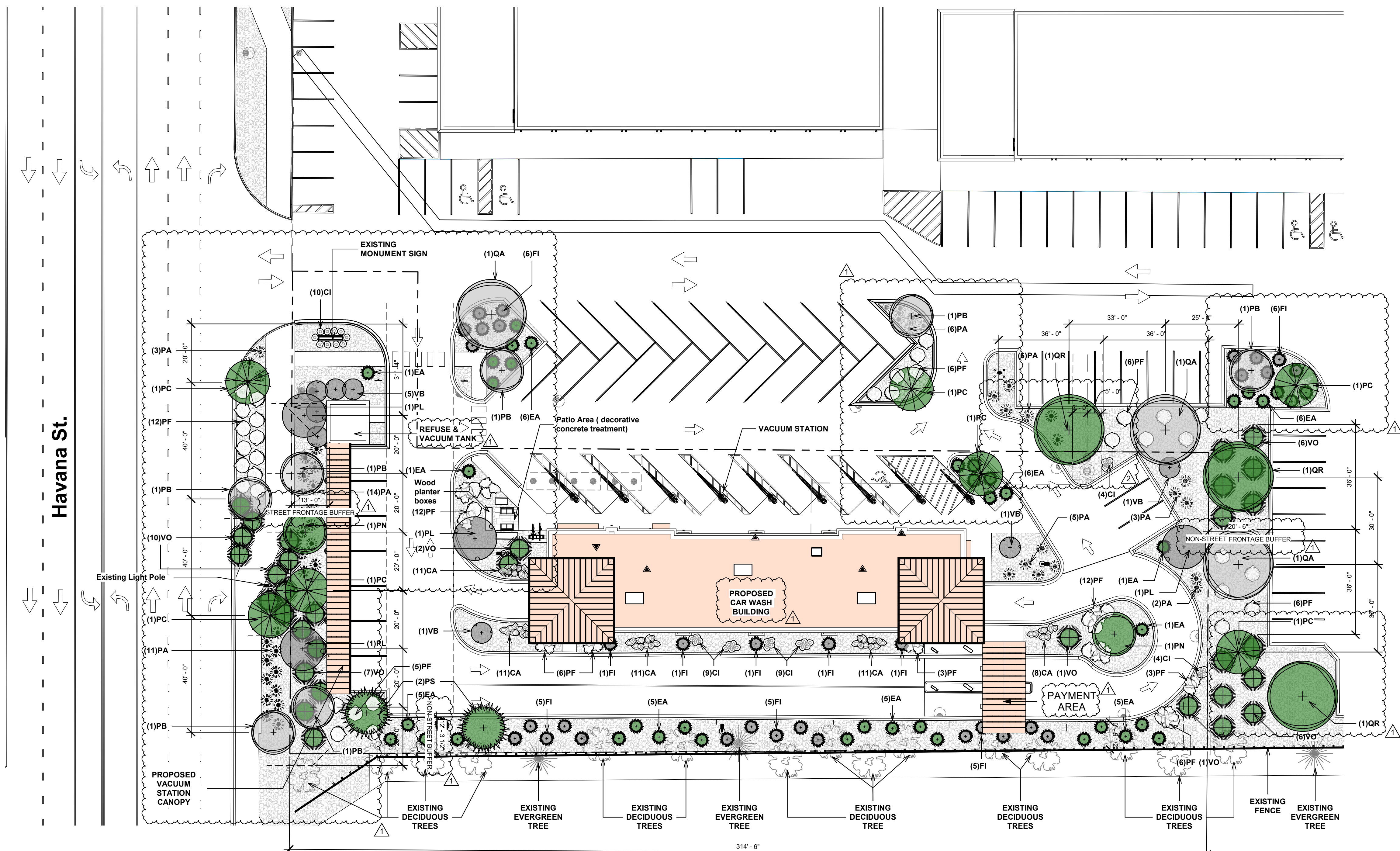
SCALE: 1/4" = 1'-0"



4 Light Post Foundation
7 SCALE: 1/2" = 1'-0"



5 GROUND COVER PLANTING DETAIL
7 SCALE: 3/8" = 1'-0"



 SITE PLAN
SCALE: 1" = 20'-0"

Planting Schedule

SYMBOL	LEGEND	QUANT.	BOTANICAL NAME	COMMON NAME	MIN. SIZE	NOTES/SPECIAL CONDITIONS	WATER USAGE
ORNAMENTAL DECIDUOUS TREES (Min. Size at planting 8' hgt. or 2.5" Caliper)							
	PC	2	Pyrus Calleryana 'Chanticleer'	Chanticleer Pear	2.5" caliper / 8' ht	Mature height 35 ft.	XX
	PB	2	Pyrus Calleryana 'Autumn Blaze'	Autumn Blaze Pear	2.5" caliper / 8' ht	Mature height 35 ft.	XX
	PL	4	Prunus Cerasifera 'Atropurpurea'	Purple Leaf Plum	2.5" caliper / 8' ht	Mature height 15 ft.	X
	PN	2	Prunus Cerasifera 'Newport'	Newport Plum	2.5" caliper / 8' ht	Mature height 10 ft.	X
EVERGREEN TREES / LARGE MATURING (Min. Size at planting 3" Caliper)							
	PS	2	Pinus Strobliformis	Southwestern White Pine	2.5" caliper / 8' ht	Mature height 30-40 ft.	XXX
DECIDUOUS SHRUBS (Height at Time of planting dwarf shrubs - 18 inches / shrubs - 26 inches)							
	PA	24	Perovskia Atroplicifolia	Russian Sage	5 gal	2' to 3' mature height	XXX
	EA	30	Euonymus Alatus 'Compactus'	Dwarf Burning Bush	5 gal	6' to 8' mature height	O
	VO	11	Viburnum Opulus Var	Dwarf European Cranberry	5 gal	3' mature height	X
	VB	8	Viburnum - Burkbottii	Burkbottii Viburnum	5 gal	8' to 10' mature height	O
	FI	20	Forsythia Intermedia 'Arnold Dwarf'	Arnold Dwarf Forsythia	5 gal	3' mature height	XXXX
ORNAMENTAL GRASS							
	CA	52	Calamagrostis Acutiflora	Feather Reed Grass	5 gal		X
	CI	26	Chasmanthium latifolium	Northern Sea Oats	5 gal		X
	PF	47	Pennisetum Alopecuroides	Fountain Grass	5 gal		X

Havana Street Planting Schedule

SYMBOL	LEGEND	QUANT.	BOTANICAL NAME	COMMON NAME	MIN. SIZE	NOTES/SPECIAL CONDITIONS	WATER USAGE
ORNAMENTAL DECIDUOUS TREES (Min. Size at planting 8' hgt. or 2.5" Caliper)							
	PC	2	Pyrus Calleryana 'Chanticleer'	Chanticleer Pear	2.5" caliper / 8' ht	Mature height 35 ft.	XX
	PB	2	Pyrus Calleryana 'Autumn Blaze'	Autumn Blaze Pear	2.5" caliper / 8' ht	Mature height 35 ft.	XX
DECIDUOUS SHRUBS (Height at Time of planting dwarf shrubs - 18 inches / shrubs - 26 inches)							
	VO	10	Viburnum Opulus Var	Dwarf European Cranberry	5 gal	3' mature height	X
	PA	14	Perovskia Atroplicifolia	Russian Sage	5 gal	2' to 3' mature height	XXX
ORNAMENTAL GRASS							
	PF	12	Pennisetum Alopecuroides	Fountain Grass	5 gal		X

New Parking Islands Planting Schedule

SYMBOL	LEGEND	QUANT.	BOTANICAL NAME	COMMON NAME	MIN. SIZE	NOTES/SPECIAL CONDITIONS	WATER USAGE
SHADE DECIDUOUS TREES (Min. Size at planting 3" Caliper)							
	OR	3	Quercus Robur	English Oak	2.5" caliper / 8' ht	Mature height 50-60 ft.	XX
	OA	3	Quercus Alba	White Oak	2.5" caliper / 8' ht	Mature height 50-75 ft.	XX
ORNAMENTAL DECIDUOUS TREES (Min. Size at planting 8' hgt. or 2.5" Caliper)							
	PC	3	Pyrus Calleryana 'Chanticleer'	Chanticleer Pear	2.5" caliper / 8' ht	Mature height 35 ft.	XX
	PB	3	Pyrus Calleryana 'Autumn Blaze'	Autumn Blaze Pear	2.5" caliper / 8' ht	Mature height 35 ft.	XX
DECIDUOUS SHRUBS (Height at Time of planting dwarf shrubs - 18 inches / shrubs - 26 inches)							
	VO	12	Viburnum Opulus Var	Dwarf European Cranberry	5 gal	3' mature height	X
	PA	12	Perovskia Atroplicifolia	Russian Sage	5 gal	2' to 3' mature height	XXX
	EA	12	Euonymus Alatus 'Compactus'	Dwarf Burning Bush	5 gal	6' to 8' mature height	O
	FI	12	Forsythia Intermedia 'Arnold Dwarf'	Arnold Dwarf Forsythia	5 gal	3' mature height	XXXX
ORNAMENTAL GRASS							
	PF	18	Pennisetum Alopecuroides	Fountain Grass	5 gal		X

Site Data Table

SITE DATA		AREA IN S.F.	%
TOTAL SITE AREA		35,112 S.F.	100.0 %
BUILDING COVERAGE		4,983 S.F.	14.2 %
HARD SURFACE AREA		19,969 S.F.	56.9 %
SITE LANDSCAPE AREA		10,160 S.F.	28.9 %
MAXIMUM % OF COOL SEASON GRASSES ALLOWED % OF COOL SEASON GRASSES PROVIDED		3,352 S.F.	33%
		0 S.F.	0%

Landscape Requirements

CURBSIDE LANDSCAPE							
DESCRIPTION	TOTAL LENGTH	NOTES	SF	NET LENGTH	CALCULATIONS	# TREES REQ. / PROV.	# SHRUBS REQ. (1 SHRUB PER 40 SF) / PROV.
HAVANA	147 LF	9'-4" WIDTH	1,335.87	147 LF	1 TREE / 40 LF	3.6 / 4	34 / 36

STREET FRONTAGE LANDSCAPE BUFFER

1

BUFFER DESCRIPTION	BUFFER WIDTH REQUIRED / PROVIDED	REDUCTION FEATURES	LANDSCAPE REQUIREMENTS	QUANTITY (L.F. OR S.F.)	# TREES REQ. / PROV.	# SHRUBS REQ. / PROV.
HAVANA	9'-0" / 13'-0"	-	1 TE / 40 LF	147 LF	3.6 / 4	34 / 36

NON-RESIDENTIAL BUILDING PERIMETER LANDSCAPING REQUIREMENTS				
ELEVATION (DIRECTION FACING)	ELEVATION LENGTH	TREE EQUIVALENT REQUIRED (1 TREE PER 40 L.F.)	TREES PROVIDED	SHRUBS PROVIDED (10 SHRUBS PER TREE EQ.)
WEST	38' LF	3.6	4	36
TOTALS		3.6	4 (4.0 T.E.)	36 (3.6 T.E.)

NON-STREET PERIMETER BUFFER REQUIREMENTS						
BUFFER DESCRIPTION	BUFFER WIDTH REQUIRED / PROVIDED	REDUCTION FEATURES	LANDSCAPE REQUIREMENTS	QUANTITY (L.F. OR S.F.)	# TREES REQ. / PROV.	# SHRUBS REQ. / PROV.
SOUTH PROPERTY BOUNDARY	10'-0" / 9'-5" to 12'-3"	-	1 TREE / 40 LF 5 SHRUBS / 40 LF	314.5	7.8 / 2 NEW, 7 EXISTING	39 / 40

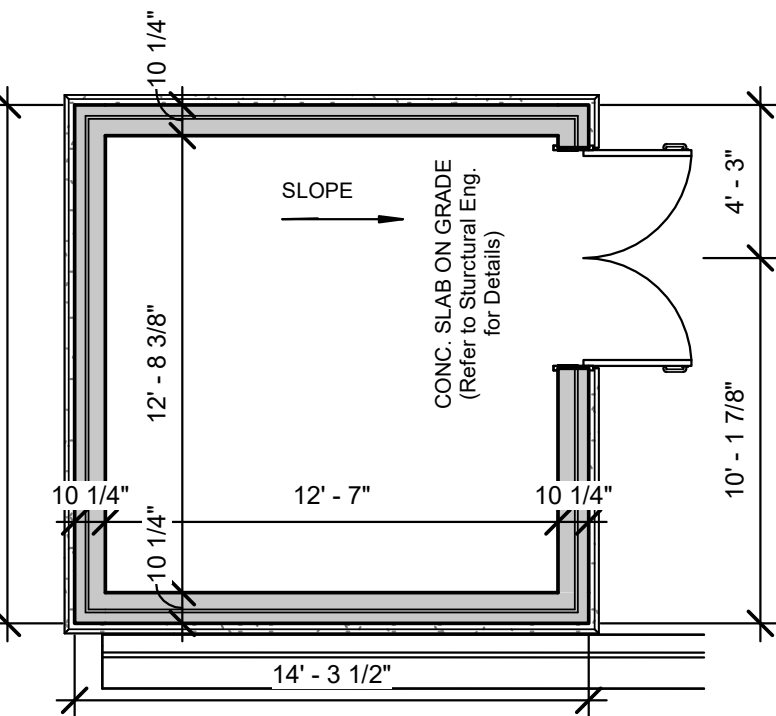
- STANDARD LANDSCAPE NOTES**
1. INSTALL SOIL AMENDMENTS AND FERTILIZERS PER THE SOILS REPORT RECOMMENDATIONS. SOIL TO BE AMENDED AT A MINIMUM OF FOUR (4) CUBIC YARDS OF ORGANIC MATTER PER 1,000 S.F. OF AREA TO OBTAIN A LAWN PERMIT.
 2. LIGHTS TO BE CONSISTENT WITH THE ARCHITECTURE AND IN ACCORDANCE WITH CITY OF AURORA CITY CODE. LIGHTS TO BE PLACED IN LOCATIONS AS SHOWN ON THE PHOTOMETRIC PLANS. REFER TO PHOTOMETRIC SHEETS FOR LIGHTING DETAILS.
 3. ALL WALKS AND PLAZA AREAS SHALL BE CONSTRUCTED WITH CONCRETE. ALL VEHICULAR DRIVES AND PARKING AREAS SHALL BE CONSTRUCTED WITH ASPHALT.
 4. ALL UTILITY EASEMENTS SHALL REMAIN UNOBSTRUCTED AND FULLY ACCESSIBLE ALONG THEIR ENTIRE LENGTH OF MAINTENANCE EQUIPMENT ENTRY.
 5. THE DEVELOPER, HIS SUCCESSORS AND ASSIGNEES, SHALL BE RESPONSIBLE FOR INSTALLATION, MAINTENANCE, AND REPLACEMENT OF ALL LANDSCAPING MATERIALS SHOWN OR INDICATED ON THE APPROVED SITE PLAN OR LANDSCAPE PLAN ON FILE IN THE PLANNING DEPARTMENT. ALL LANDSCAPING WILL BE INSTALLED AS DELINEATED ON THE PLAN, PRIOR TO ISSUANCE OF CERTIFICATE OF OCCUPANCY.
 6. PER THE UNIFIED DEVELOPMENT ORDINANCE 146-4.7.3.C, NEW LANDSCAPE AREAS, PLANT BEDS, RAISED PLANTERS, AND PLANT CONTAINERS, WITH THE EXCEPTION OF NON-IRRIGATED NATIVE, RYLAND, AND RESTORATIVE GRASSES SHALL BE WATERED BY A PERMANENT AUTOMATIC IRRIGATION SYSTEM MEETING ALL ADOPTED AURORA WATER ENGINEERING STANDARDS. AUTOMATIC RAIN SHUTOFF SENSORS SHALL BE INSTALLED IN ALL IRRIGATION SYSTEMS.
 7. LANDSCAPE MATERIAL PLACEMENT SHALL NOT BE PLACED OR KEPT NEAR FIRE HYDRANTS. FIRE DEPARTMENT INLET CONNECTIONS OR FIRE PROTECTION CONTROL VALVES IN A MANNER THAT WOULD PREVENT SUCH EQUIPMENT OR FIRE HYDRANTS FROM BEING IMMEDIATELY DISCERNIBLE. THE FIRE DEPARTMENT SHALL NOT BE DETERRED OR HINDERED FROM GAINING IMMEDIATE ACCESS TO FIRE PROTECTION EQUIPMENT OR HYDRANTS.
 8. ALL PROPOSED LANDSCAPING WITHIN THE SIGHT TRIANGLE SHALL BE IN COMPLIANCE WITH CITY OF AURORA ROADWAY SPECIFICATIONS, SECTION 4.04.2.10.

- NOTES:**
- X-RATED = PLANTS NEED 1" OF WATER PER WEEK
 - XX-RATED = PLANTS NEED 1/2" OF WATER PER WEEK
 - XXX-RATED = PLANTS NEED 1/4" OF WATER EVERY TWO WEEKS
 - XXXX-RATED = PLANTS NEED MORE THAN 1" OF WATER PER WEEK
 - O-RATED = NO DATA

THESE WATERING RECOMMENDATIONS ARE FOR PLANTS THAT HAVE BEEN ESTABLISHED FOR AT LEAST ONE GROWING SEASON. NEWLY INSTALLED PLANTS WILL REQUIRE MORE WATER THAN INDICATED ON THE FOLLOWING LISTS.

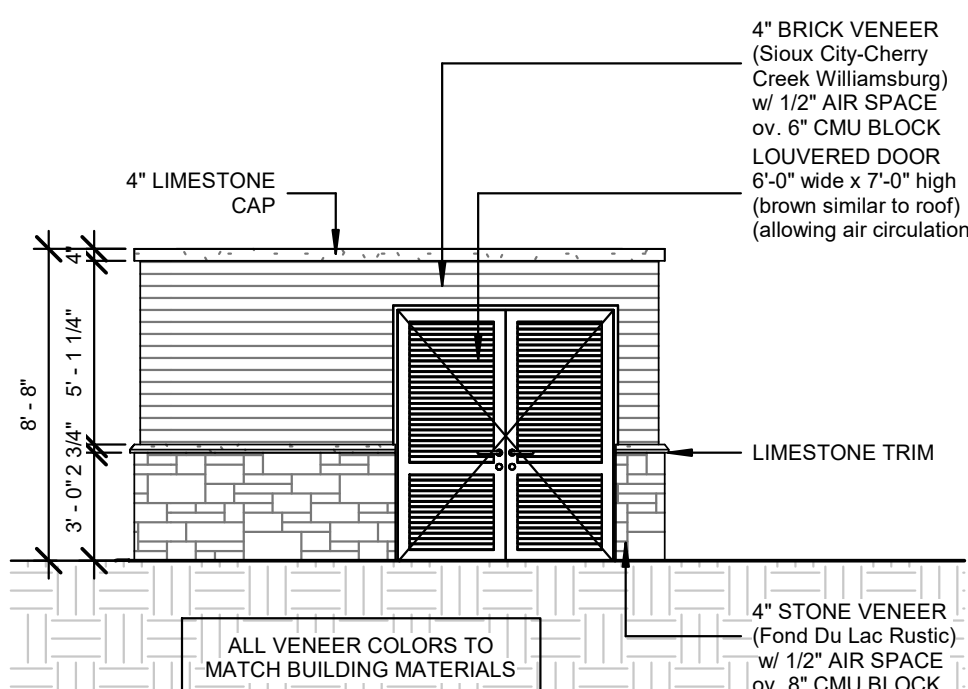
Water Use

DESCRIPTION	AREA IN SF	PERCENTAGE
NON WATER CONSERVING	13,160.49 S.F.	77%
WATER CONSERVING	2,734.65 S.F.	16%
NON WATER (Z)	1,196.41 S.F.	7%



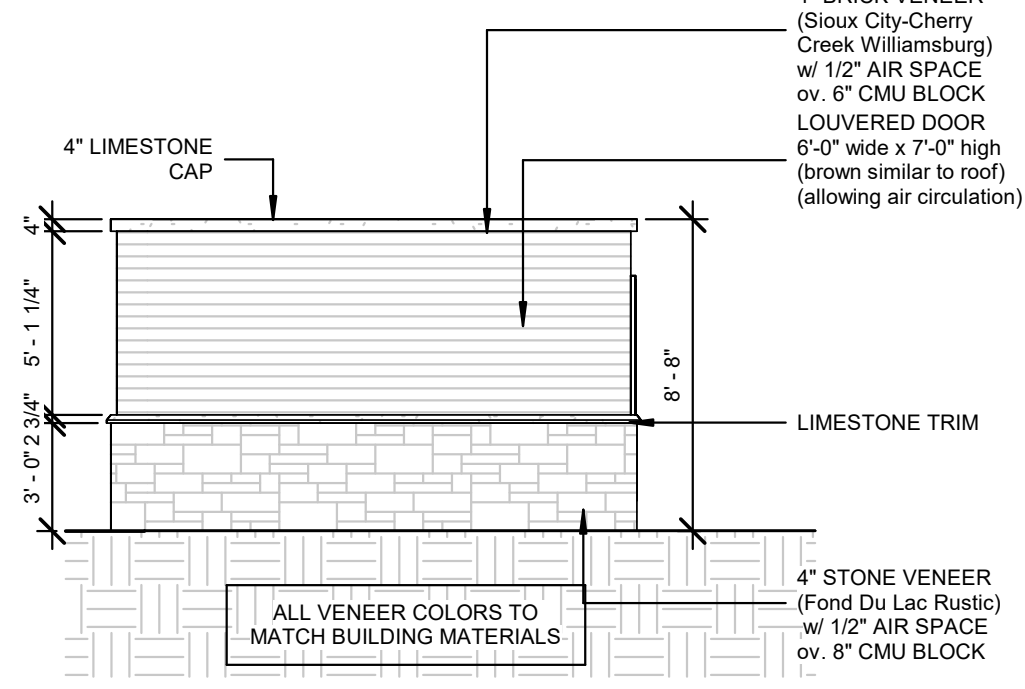
Refuse Plan

SCALE: 3/16" = 1'-0"



Refuse (Entry)

SCALE: 3/16" = 1'-0"

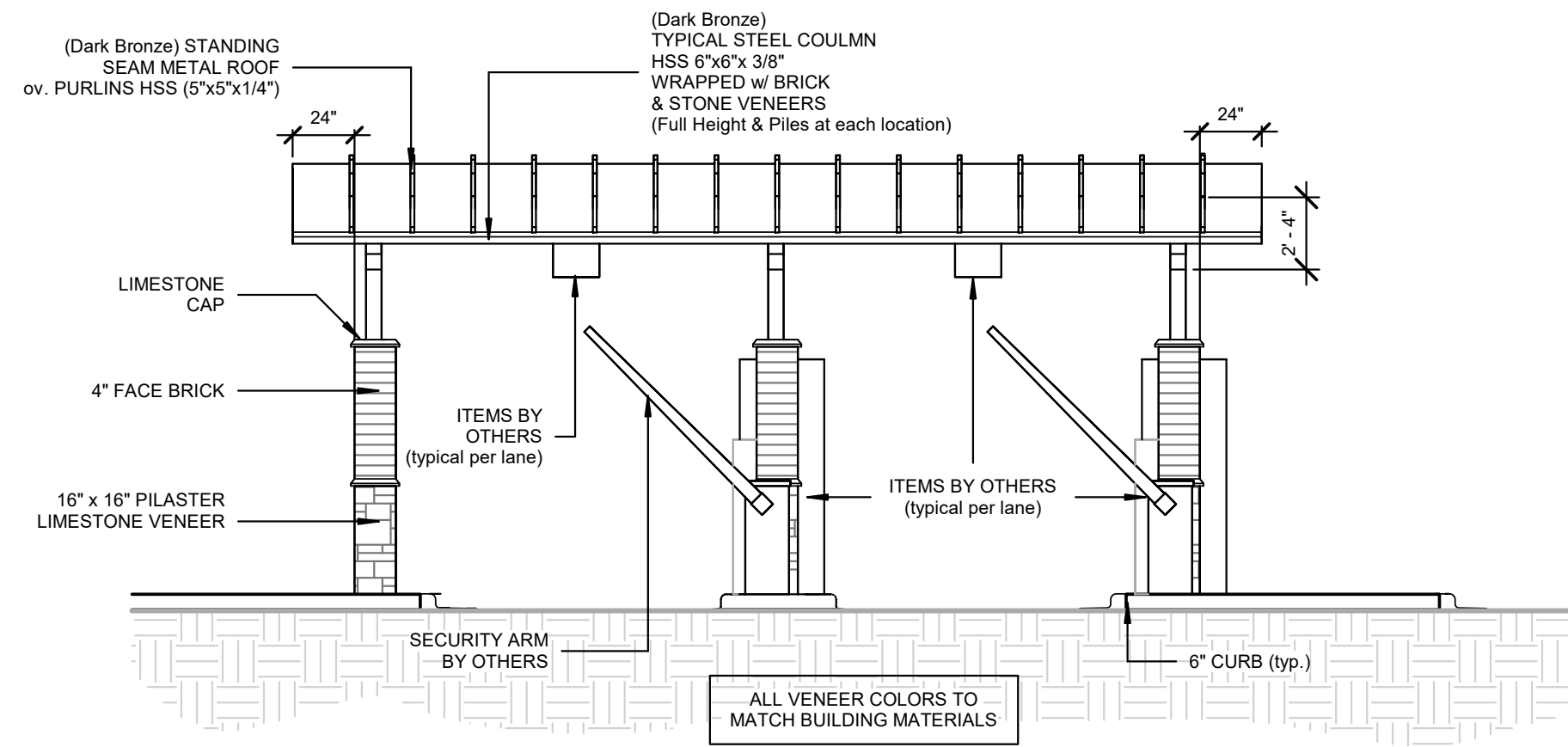


Refuse (Sides)

SCALE: 3/16" = 1'-0"

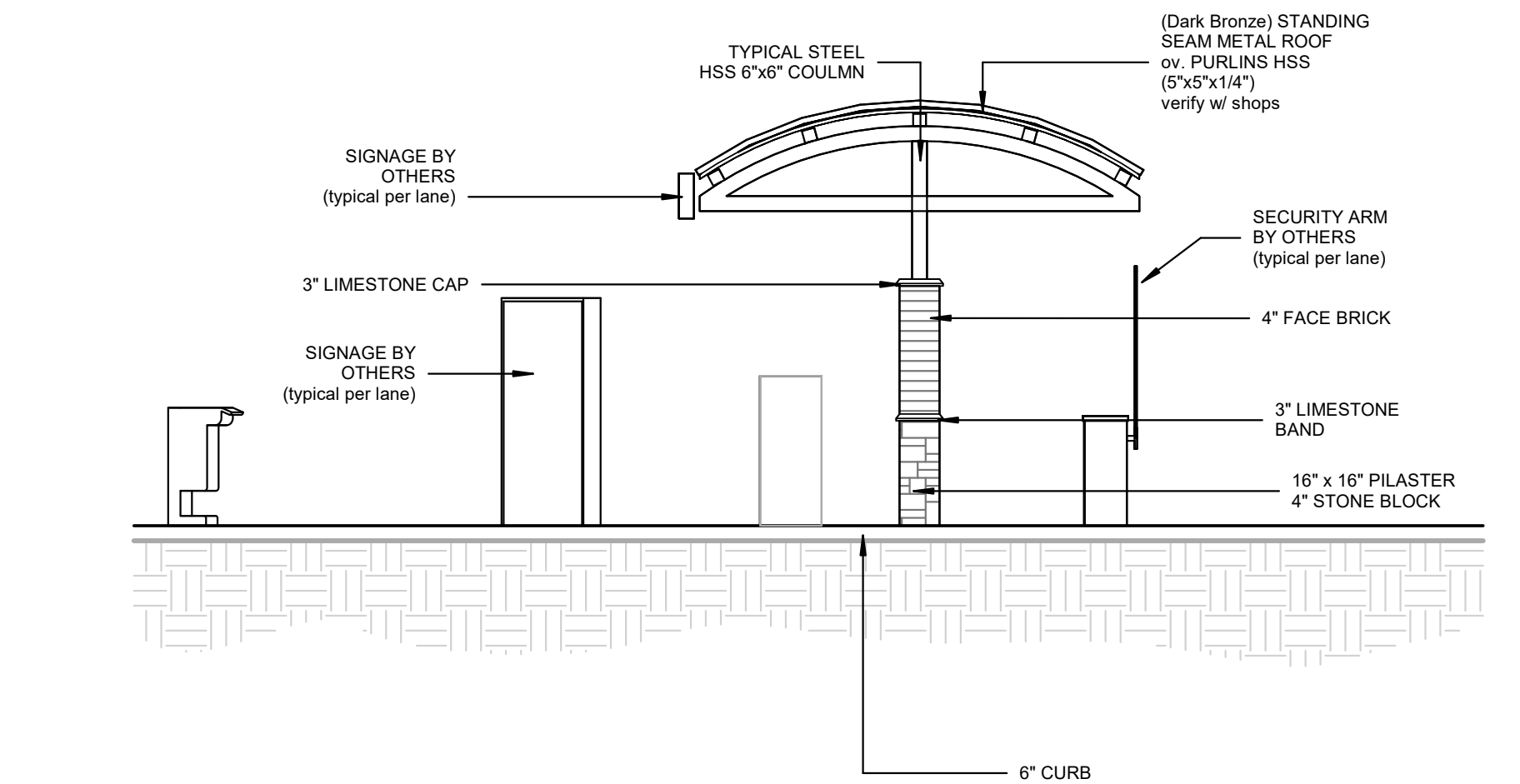
PAY STATION PLAN

SCALE: 3/16" = 1'-0"



Pay Station Side Elevation

SCALE: 3/16" = 1'-0"



Pay Station Front Elevation

SCALE: 3/16" = 1'-0"

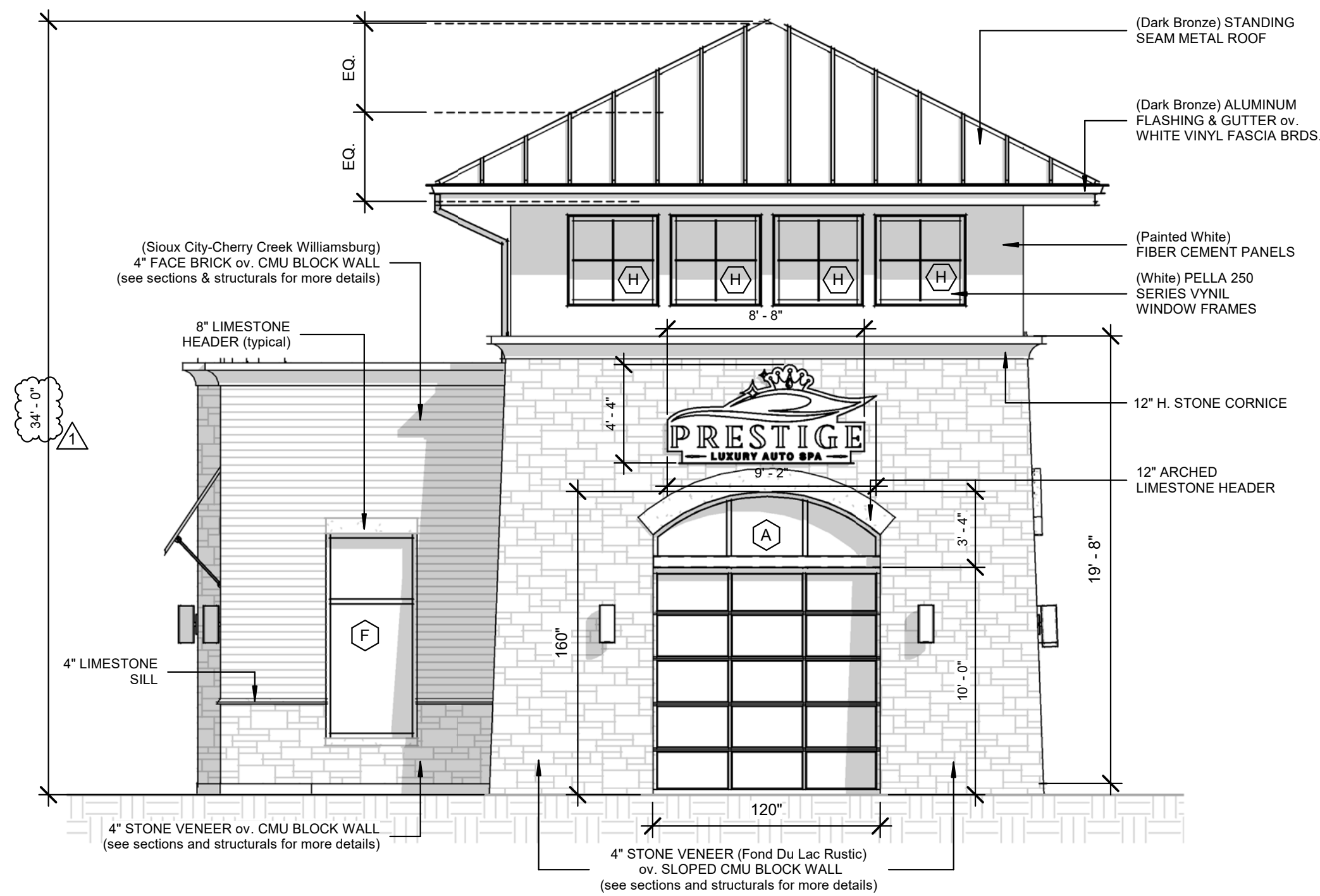
NEW AUTOMATED CARWASH FACILITY

200 N. HAVANA ST.
AURORA, CO 80010

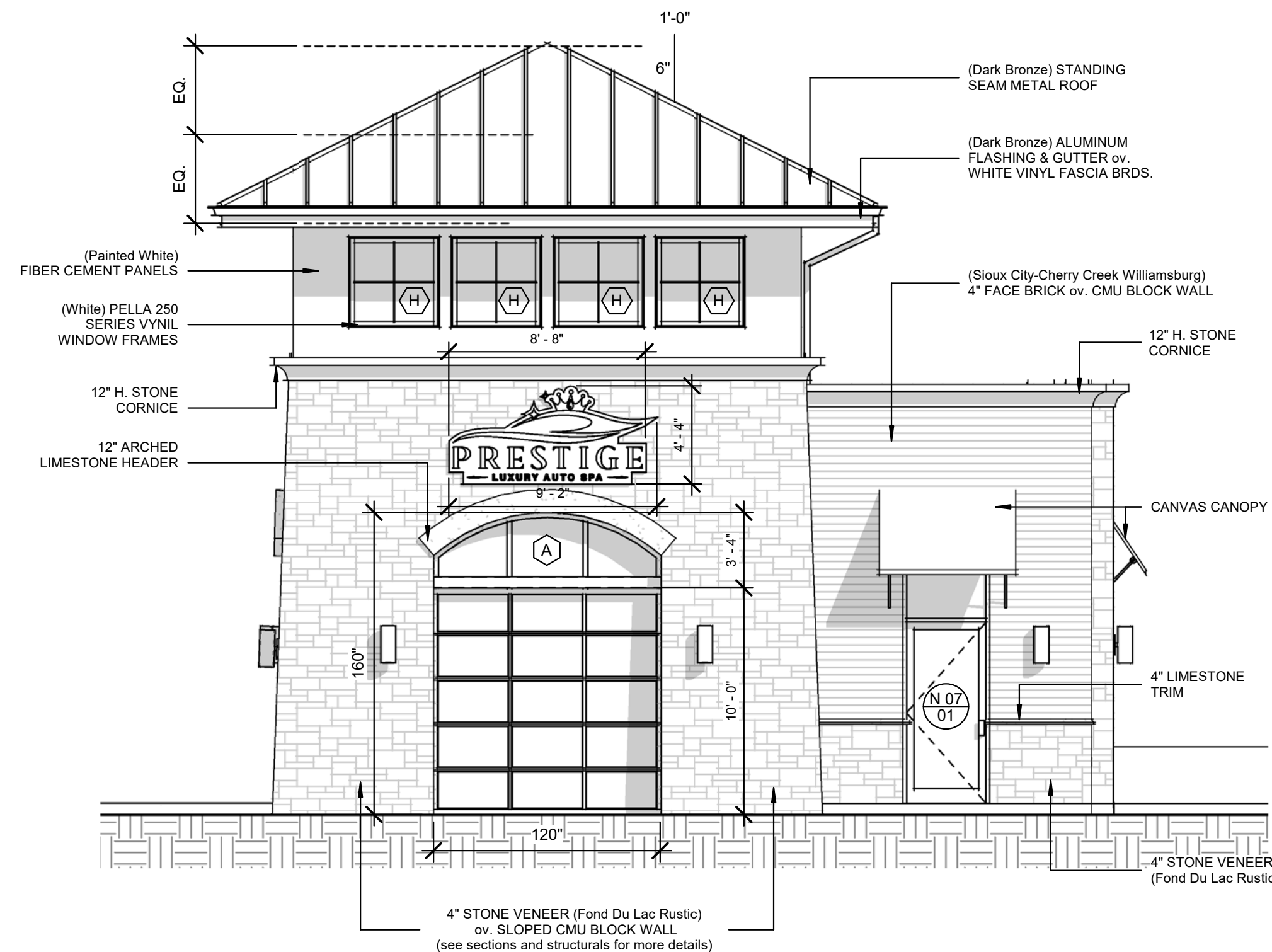
ZONING REVIEW - NOT FOR CONSTRUCTION

PROJECT #	2350
DATE:	01/17/24

12.04.24	ZONING REVISION
10.16.24	ZONING REVISION
01.12.24	ZONING REVIEW
REVISIONS	
DRAWN BY:	RAM
APPROVED BY:	GCN / MAM
SCALE:	AS NOTED
DESCRIPTION:	LANDSCAPE NOTES & ACCESSORY STRUCTURES
SHEET NO.	8



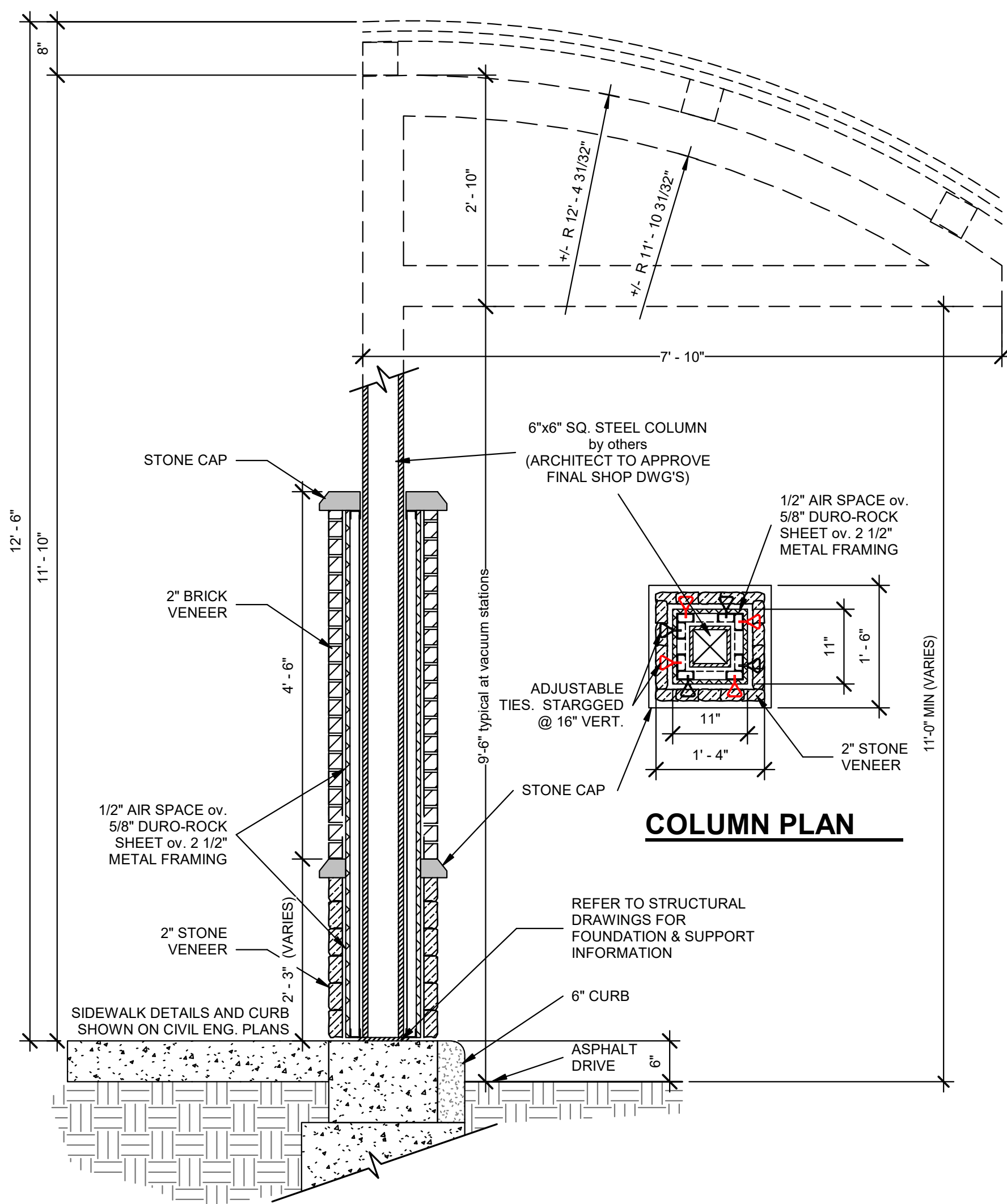
5 West Elevation
SCALE: 3/16" = 1'-0"



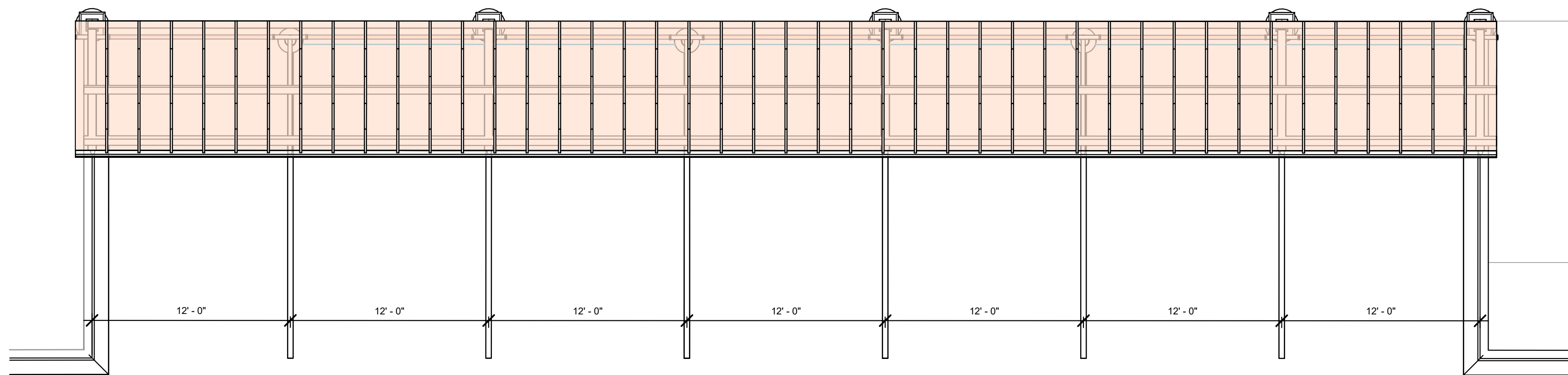
6 East Elevation
SCALE: 3/16" = 1'-0"

Primary Materials
Face Brick & Stone Block (65.8%)

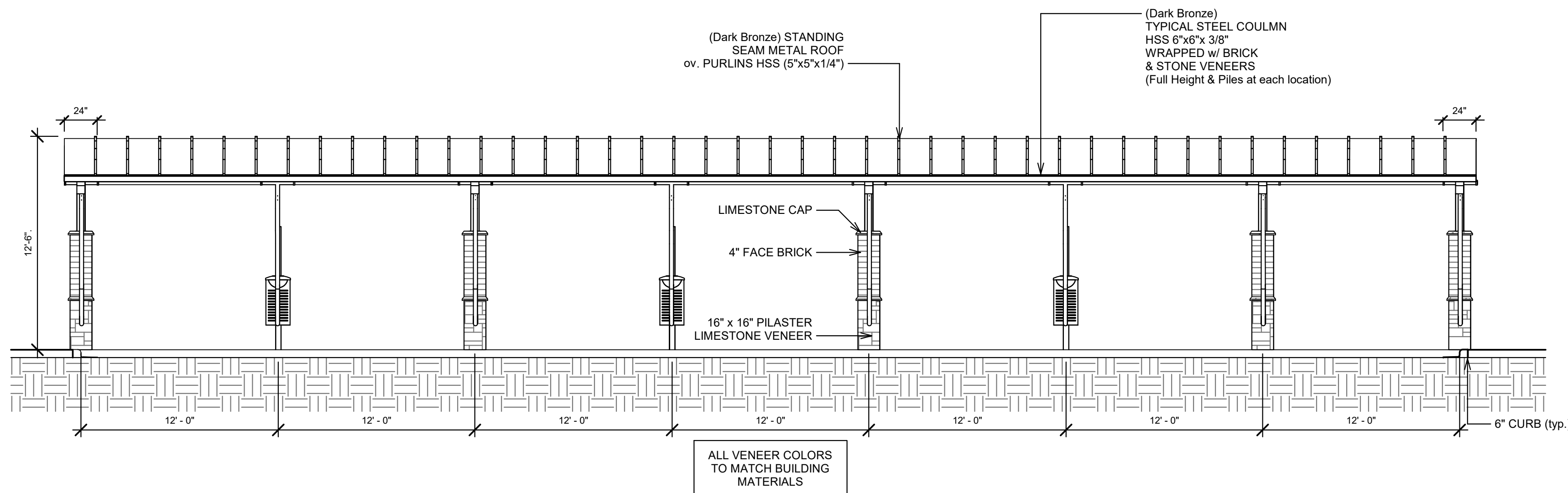
Accent Material
Fiber Cement Panels (15.9%)



1 VENEER COLUMN DETAIL
SCALE: 3/4" = 1'-0"



3 VACUUM STATION PLAN
SCALE: 3/16" = 1'-0"



2 VACUUM CANOPY ELEVATION
SCALE: 3/16" = 1'-0"

NEW AUTOMATED CARWASH FACILITY

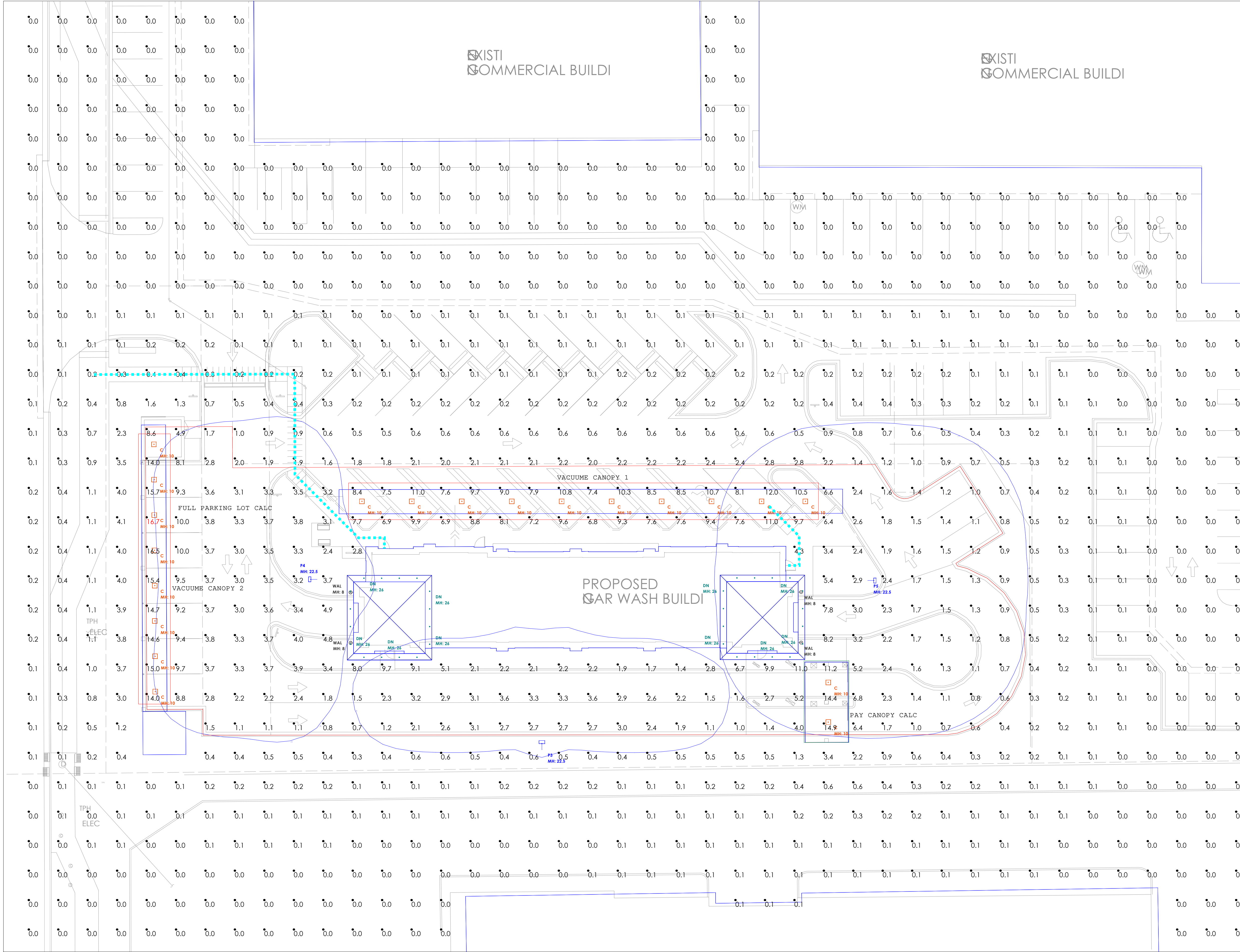
200 N. HAVANA ST.
AURORA, CO 80010

ZONING REVIEW - NOT FOR CONSTRUCTION

PROJECT #	2350
DATE:	01/17/24

12.04.24	ZONING REVISION
10.16.24	ZONING REVISION
01.12.24	ZONING REVIEW
REVISIONS	
DRAWN BY:	RAM
APPROVED BY:	GCN / MAM
SCALE:	AS NOTED
DESCRIPTION:	MAIN ELEVATIONS & VACUUM STATION
SHEET NO.	

[illegible]



Not to Scale

Calculation Summary							
Label	Units	CalcType	Avg	Max	Min	Max/Min	Avg/Min
FULL AREA CALC	Fc	Illuminance	0.71	16.7	0.0	N.A.	N.A.
FULL PARKING LOT CALC	Fc	Illuminance	4.69	16.7	0.6	27.83	7.82
PAY CANOPY CALC	Fc	Illuminance	13.50	14.9	11.2	1.33	1.21
VACUUME CANOPY 1	Fc	Illuminance	8.81	12.0	6.8	1.76	1.30
VACUUME CANOPY 2	Fc	Illuminance	15.18	16.7	14.0	1.19	1.08

Luminaire Schedule - Part numbers are provided by the manufacturer and are only intended to be used as a reference to output and optics used.									
Symbol	Tag	Qty	Manufacturer	Arrangement	Description	Luminaire Lumens	Luminaire Watts	Mounting Height	LLF
	C	20	BEACON	Single	VSH-30-4K7-UNV	4450	30.405	10	0.900
	DN	32	DALS Lighting Inc.	Single	RGR4-CC-XX	996	14.4	26	0.900
	P3	1	EXO	Single	ASL1-160L-115-4K7-3-BC	10609	109.7	22.5	0.900
	P4	1	EXO	Single	ASL1-160L-115-4K7-4W-U	15232	109.7	22.5	0.900
	P5	1	EXO	Single	ASL1-160L-115-4K7-5QW-U	15632	109.7	22.5	0.900
	WAL	4	FC Lighting	Single	F002550FCC6184K50LD40U40	5095	53.767	8	0.900

NOTES

PG-ENLIGHTEN IS NEITHER LICENSED NOR INSURED TO DETERMINE CODE COMPLIANCE. CODE COMPLIANCE REVIEW BY OTHERS.

ANY VARIANCE FROM REFLECTANCE VALUES, OBSTRUCTIONS, LIGHT LOSS FACTORS OR DIMENSIONAL DATA WILL AFFECT THE ACTUAL LIGHT LEVELS OBTAINED.

THIS ANALYSIS IS A MATHEMATICAL MODEL AND CAN BE ONLY AS ACCURATE AS IS PERMITTED BY THE THIRD-PARTY SOFTWARE AND THE IES STANDARDS USED.

FIXTURE TYPES AND QUANTITIES MAY CHANGE BASED ON UNKNOWN OBSTRUCTIONS OR FIELD CONDITIONS. THESE CHANGES MAY RESULT IN AN INCREASED QUANTITY OF FIXTURES.

FIXTURE TYPES AND QUANTITIES BASED ON PROVIDED LAYOUT AND DRAWINGS ARE FOR REFERENCE ONLY. TYPES AND QUANTITIES MAY CHANGE WITH FUTURE REVISIONS.

CALCULATION GRID VALUES 10'-0" O.C.

Luminaire Location Summary		
LumNo	Label	Mtg Ht
1	ASL1-160L-115-4K7-3-BC	22.5
2	ASL1-160L-115-4K7-4W_1_1	22.5
3	ASL1-160L-115-4K7-5QW	22.5
4	F002550FCC6184K50LD40U40	8
5	F002550FCC6184K50LD40U40	8
6	F002550FCC6184K50LD40U40	8
7	F002550FCC6184K50LD40U40	8
8	RGR4	26
9	RGR4	26
10	RGR4	26
11	RGR4	26
12	RGR4	26
13	RGR4	26
14	RGR4	26
15	RGR4	26
16	RGR4	26
17	RGR4	26
18	RGR4	26
19	RGR4	26
20	RGR4	26
21	RGR4	26
22	RGR4	26
23	RGR4	26
24	RGR4	26
25	RGR4	26
26	RGR4	26
27	RGR4	26
28	RGR4	26
29	RGR4	26
30	RGR4	26
31	RGR4	26
32	RGR4	26
33	RGR4	26
34	RGR4	26
35	RGR4	26
36	RGR4	26
37	RGR4	26
38	RGR4	26
39	RGR4	26
40	VSH-30-4K7	10
41	VSH-30-4K7	10
42	VSH-30-4K7	10
43	VSH-30-4K7	10
44	VSH-30-4K7	10
45	VSH-30-4K7	10
46	VSH-30-4K7	10
47	VSH-30-4K7	10
48	VSH-30-4K7	10
49	VSH-30-4K7	10
50	VSH-30-4K7	10
51	VSH-30-4K7	10
52	VSH-30-4K7	10
53	VSH-30-4K7	10
54	VSH-30-4K7	10
55	VSH-30-4K7	10
56	VSH-30-4K7	10
57	VSH-30-4K7	10
58	VSH-30-4K7	10
59	VSH-30-4K7	10



PROJECT NAME:

CAR WASH FACILITY - AURORA, CO

CLIENT NAME:

NERI ARCHITECTS

DRAWN BY:
Josh Burge
josh.burge@pg-enlighten.com
847.228.1199

PG CONTACT:
Janine Everly
janine.everly@pg-enlighten.com
773.682.8478

1 2 3
REVISIONS

Date:10/16/2024

