

JAG LOGISTICS CENTER AT DIA
CONTEXTUAL SITE PLAN
PART OF THE SOUTHEAST 1/4 OF SECTION 5
TOWNSHIP 3 SOUTH, RANGE 65 WEST OF THE 6TH PRINCIPAL MERIDIAN
CITY OF AURORA, COUNTY OF ADAMS, STATE OF COLORADO

SHEET 2 OF 42

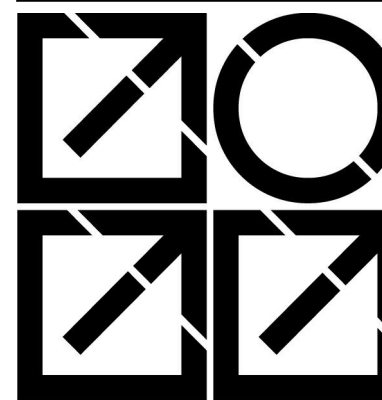
GENERAL NOTES:

- GATES OR VEHICLE ACCESS CONTROL SYSTEMS ARE PROPOSED.
- THE INSTALLATION OF ANY GATING SYSTEM WILL REQUIRE A CITY OF AURORA LICENSED CONTRACTOR TO OBTAIN A BUILDING PERMIT THROUGH THE AURORA BUILDING DIVISION PRIOR TO THE START OF ANY WORK. THIS WOULD BE CONSIDERED A STRUCTURAL, LIFE SAFETY AND ELECTRICAL REVIEW WITHIN THE BUILDING DIVISION THAT IS CONDUCTED ON BEHALF OF THE FIRE CHIEF. FOR ASSISTANCE PLEASE CALL 303-739-7420 AND ASK FOR A LIFE SAFETY PLANS EXAMINER.
- AN ENCROACHMENT INTO OR OVER A FIRE LANE EASEMENT WILL REQUIRE THE DEVELOPER TO OBTAIN A LICENSE AGREEMENT THROUGH THE REAL PROPERTY DIVISION OF THE PUBLIC WORKS DEPARTMENT PLEASE CALL 303-739-7300.
- MAINTAIN 5'-0" MINIMUM CLEAR DISTANCE BETWEEN FIRE HYDRANTS AND ANY POSSIBLE OBSTRUCTIONS SUCH AS FENCES.

SHEET NOTES

- FULL DEPTH ASPHALT PAVING FOR CAR, TRUCK, AND EMERGENCY VEHICLE TRAFFIC.
- 14' W. (+/-) x 6'-0" D. x 6'-8" H. TRASH ENCLOSURE WITH PAINTED METAL GATES ON 6" REINFORCED CONCRETE SLAB. SEE DETAILS.
- 6" H. VERTICAL CONCRETE CURB AND GUTTER WITH RADIUS AT ALL OUTSIDE CORNERS. TYP. SEE GRADING PLAN. ALL LANDSCAPING AT CONCRETE CURBS TO BE FLUSH WITH TOP OF CURB.
- 10'-0" W. CONCRETE SIDEWALK.
- 5'-0" W. CONCRETE SIDEWALK.
- 6'-0" W. CONCRETE SIDEWALK.
- 6" REINFORCED CONCRETE PAVING AT TRUCK APRON AND LOADING DOCKS.
- 6" REINFORCED CONCRETE PAVING AT DRIVE-IN TRUCK RAMP.
- VAN ACCESSIBLE HANDICAP PARKING SPACE - 9'-6" W. x 18' L. WITH 8' AISLE. PROVIDE CURB RAMP AND STANDARD HC PARKING SIGN WITH "VAN ACCESSIBLE" PLACARD BELOW.
- PAINTED WHITE LINES, 4" WIDE, TYP. STANDARD PARKING SPACES ARE 9' W. x 18' L.
- PAINTED WHITE LINES, 4" WIDE, TYP. TRAILER PARKING SPACES ARE 10' W. x 55' L.
- CURB RAMP FOR HANDICAP ACCESS ON ACCESSIBLE ROUTE.
- ELECTRICAL TRANSFORMER ON CONCRETE PAD.
- ELECTRICAL METER AND EQUIPMENT CABINETS.
- SITE CAST TILT-UP CONCRETE PANEL SCREEN WALL.
- PAINTED STEEL STAIR WITH PAINTED STEEL GUARDRAIL & HANDRAILS.
- CONCRETE STAIR WITH PAINTED STEEL GUARDRAIL & HANDRAILS.
- CONCRETE HANDICAP ACCESSIBLE RAMP WITH PAINTED STEEL GUARDRAIL & HANDRAILS.
- DASHED LINE INDICATES ACCESSIBLE ROUTE.
- DRAINAGE EASEMENT.
- 26' W. FIRE LANE & ACCESS EASEMENT. INSIDE TURNING RADIUS TO BE 26' AND OUTSIDE TURNING RADIUS TO BE 52'.
- 16' W. UTILITY EASEMENT.
- 30' W. UTILITY EASEMENT.
- SIGHT DISTANCE TRIANGLE.
- CONCRETE RETAINING WALL, LOCATED IN EASEMENT BY LICENSE AGREEMENT. SEE GRADING PLAN.
- LIGHT POLE WITH CUT-OFF STYLE FIXTURE. SEE PHOTOMETRIC PLANS.
- INVERTED-U BICYCLE RACK. SEE DETAILS.
- SITE CAST TILT-UP CONCRETE MONUMENT SIGN. SEE DETAILS.
- IRRIGATED LANDSCAPE AREA. SEE LANDSCAPE DRAWINGS.
- SLOPED VERTICAL CONCRETE RETAINING WALL.
- STORM DRAIN INLET. SEE CIVIL DRAWINGS.
- PROPOSED FIRE HYDRANT. SEE CIVIL DRAWINGS.
- PROPOSED FIRE DEPARTMENT CONNECTION WITH APPROVED KNOX HARDWARE.
- GAS SERVICE / METER DISTRIBUTION POINT. PAINT TO MATCH ADJACENT WALL COLOR. SEE PLUMBING DRAWINGS.
- FIRE DEPARTMENT KNOX BOX. VERIFY EXACT LOCATION WITH AURORA BUILDING DIVISION FIRE LIFE SAFETY REPRESENTATIVE.
- STOP SIGN.
- 10' W. UTILITY EASEMENT.
- PROVIDE VEHICLE IMPACT PROTECTION BOLLARDS AT THIS FIRE HYDRANT. SEE DETAILS.
- 210' W. EXISTING PSCO EASEMENT.
- UTILITY EASEMENT.
- PRIVATE GRADING EASEMENT.
- 6' H. SECURITY FENCE. SEE DETAILS.
- (2) 15' W. AUTOMATIC SLIDING GATES WITH APPROVED SIREN OPERATED SYSTEM, KNOX KEY SWITCH, AND MANUAL RELEASE.
- SELF-CLOSING SECURITY GATE IN FENCE, WITH MECHANICAL COMBINATION LOCK.

CS-10478A



INTERGROUP
ARCHITECTS

architecture
planning
interiors

2000 West Littleton Blvd
Littleton, Colorado 80120
P. 303.738.8877 F. 303.738.2294
www.igarch.com

copyright 2018
These plans and written material are
instruments of service and are the property
of InterGroup, Inc. and may not be
reproduced, disclosed or reproduced without
the written consent of the Architect.
Violations will be prosecuted.

JAG LOGISTICS CENTER AT DIA
CONTEXTUAL SITE PLAN

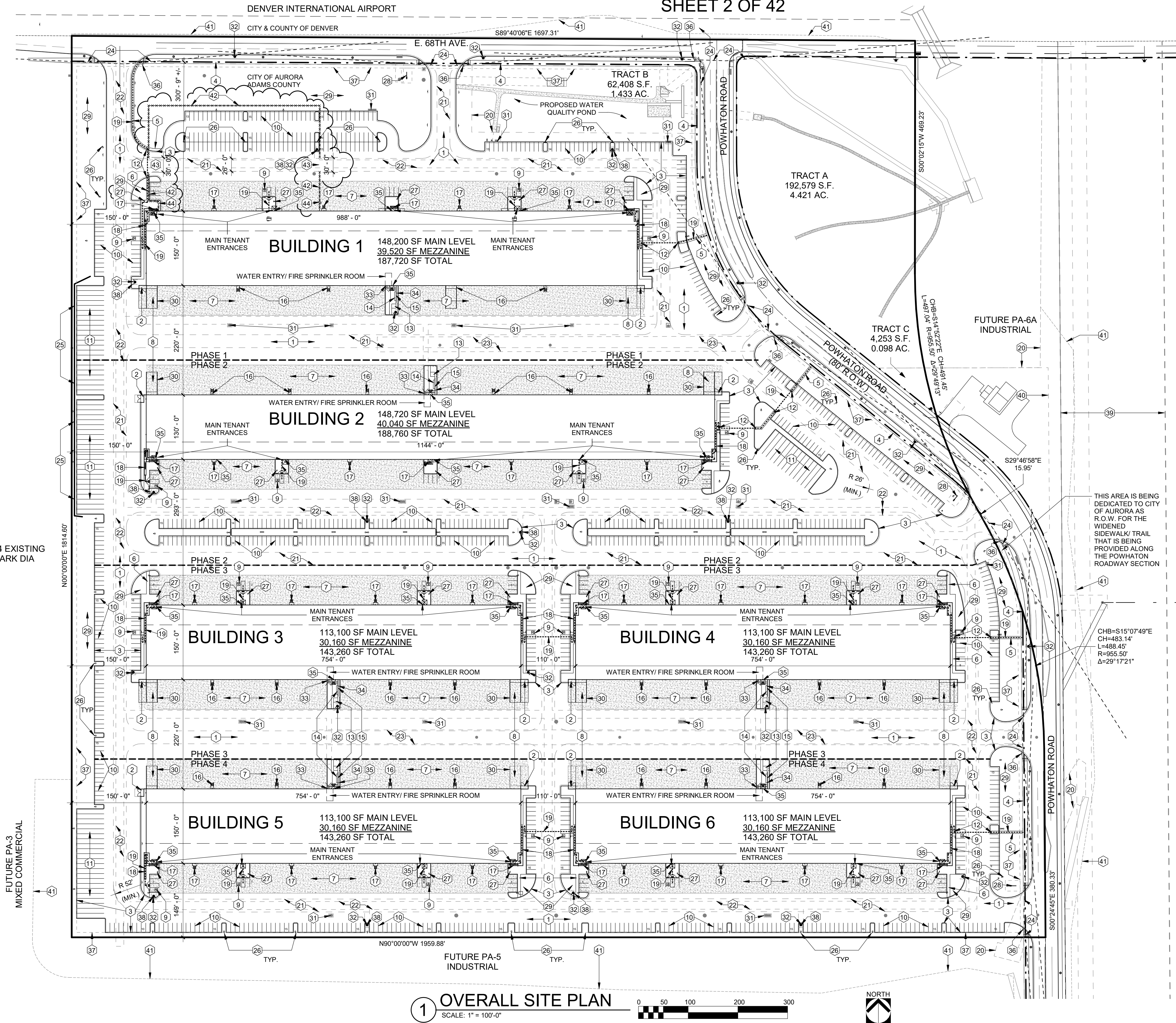
DATE	DESC.
8-27-2018	PRE-SUB MTG
9-4-2018	1ST SUB.
11-8-2018	2ND SUB.
12-20-2018	3RD SUB.
1-29-2019	4TH SUB.
3-6-2019	5TH SUB.
4-12-2019	6TH SUB.
8-22-2019	7TH SUB.
10-11-2019	8TH SUB.
6-2-2020	MINOR AMEND.

CSP-2
OVERALL SITE PLAN

REF. NO.DA-1903-06

By: Author

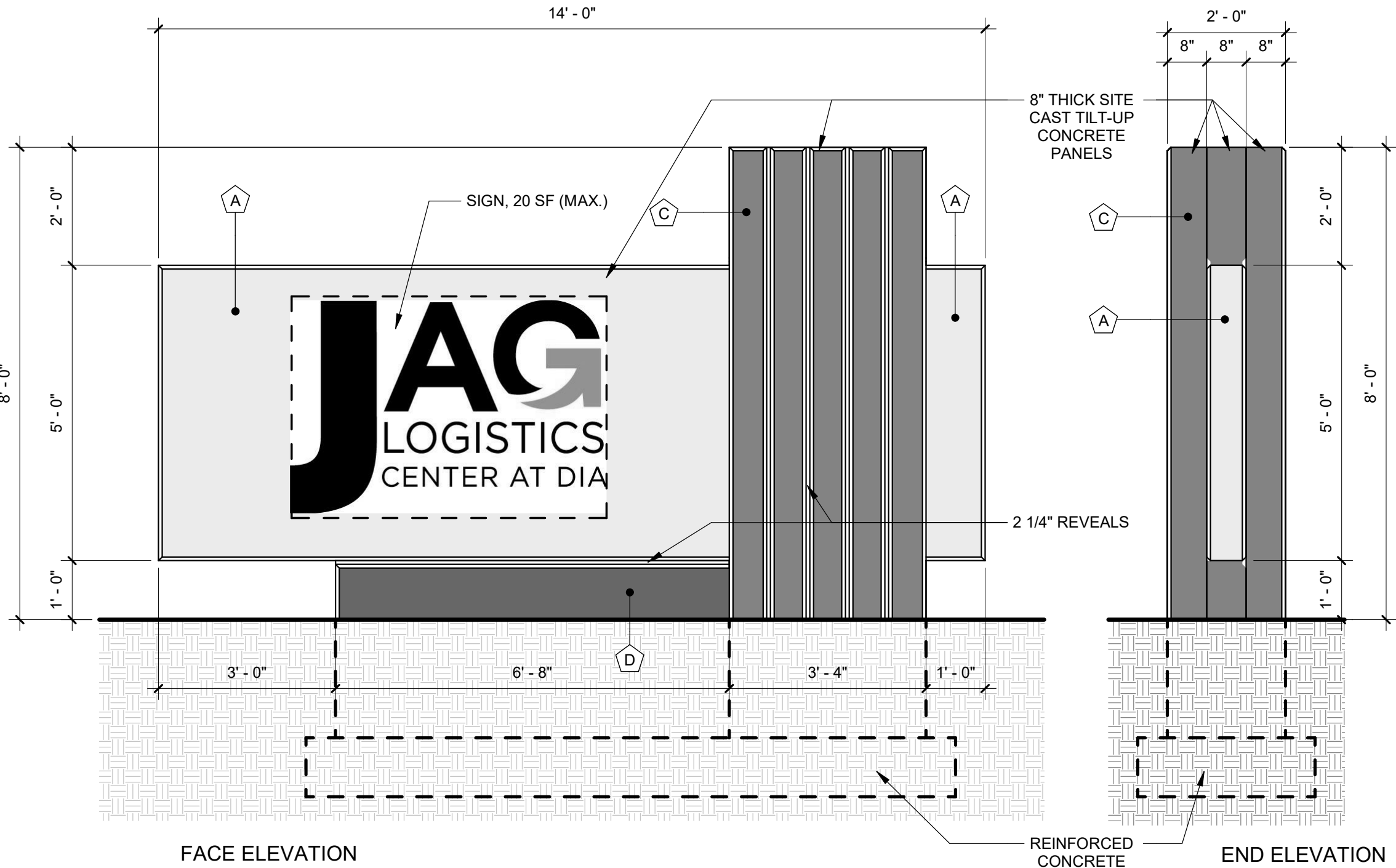
6/2/2020 9:59:34 AM



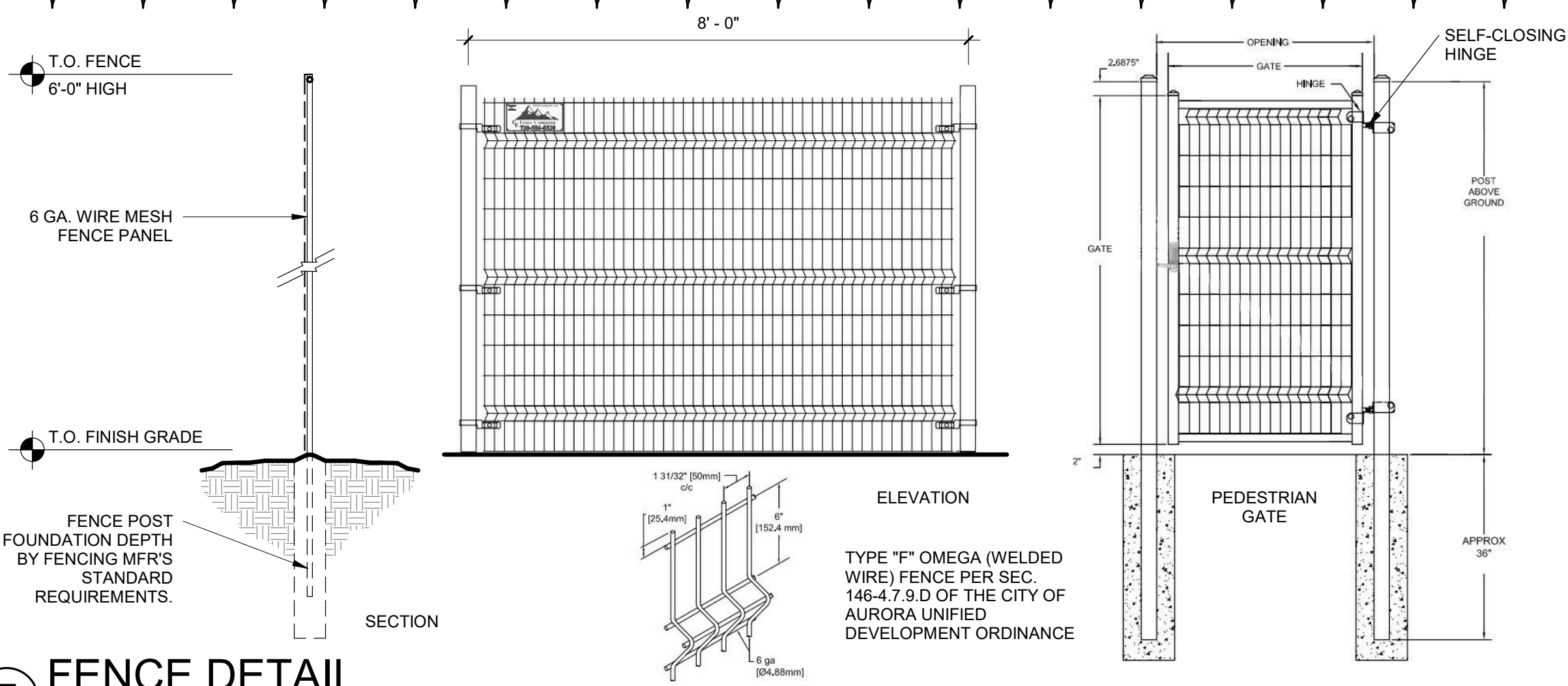
1 OVERALL SITE PLAN
SCALE: 1" = 100'-0"



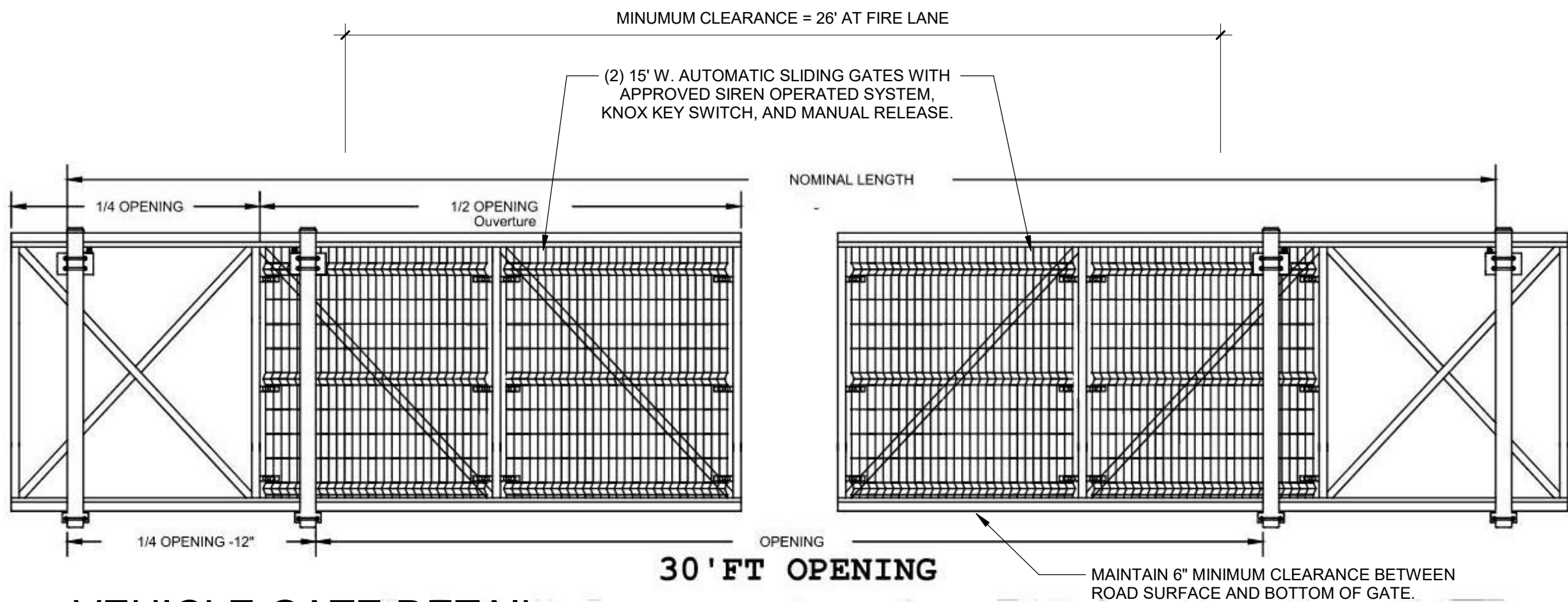
JAG LOGISTICS CENTER AT DIA
CONTEXTUAL SITE PLAN
PART OF THE SOUTHEAST 1/4 OF SECTION 5
TOWNSHIP 3 SOUTH, RANGE 65 WEST OF THE 6TH PRINCIPAL MERIDIAN
CITY OF AURORA, COUNTY OF ADAMS, STATE OF COLORADO
SHEET 35 OF 42



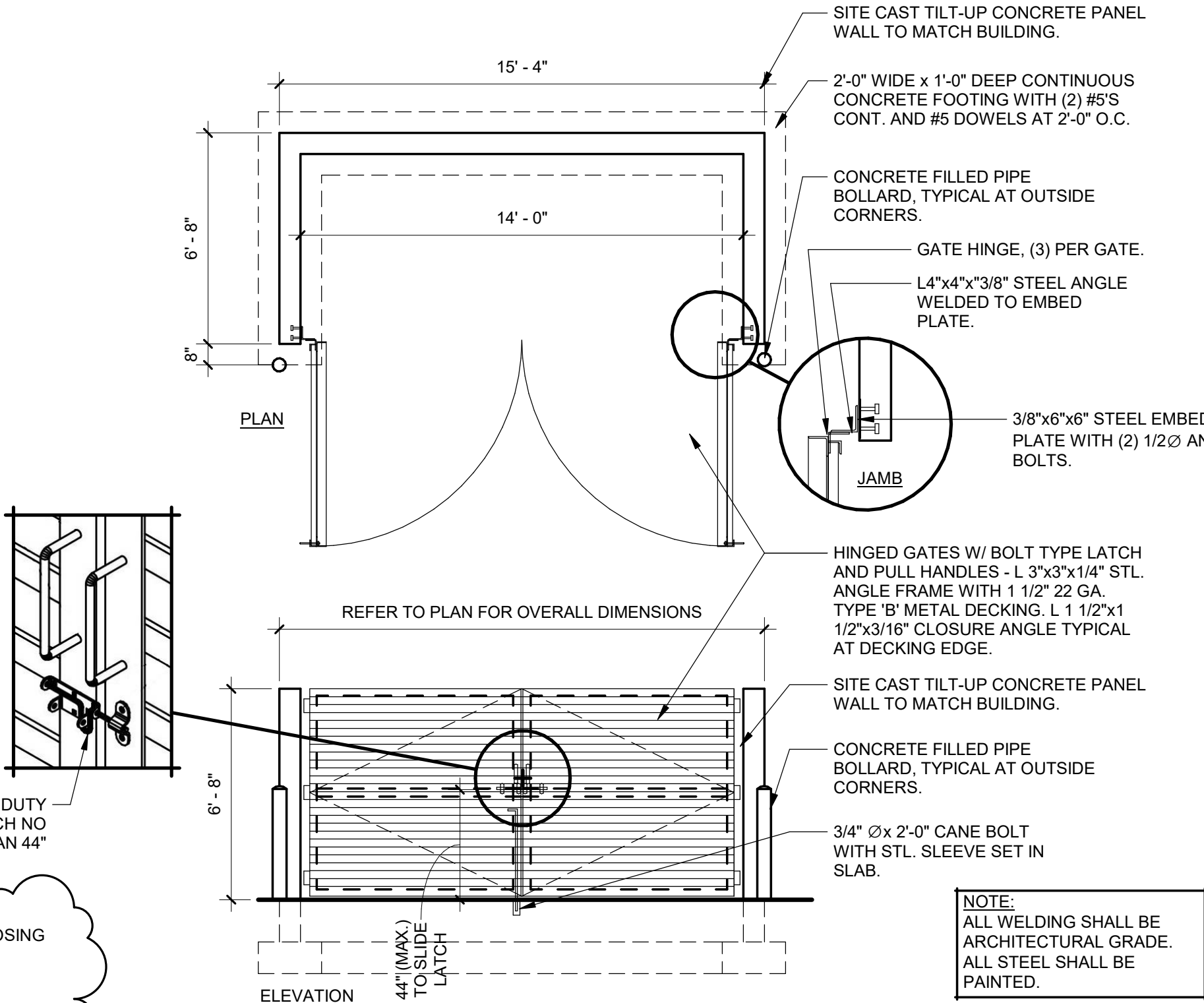
6 MONUMENT SIGN ELEVATIONS
SCALE: 1/2" = 1'-0"



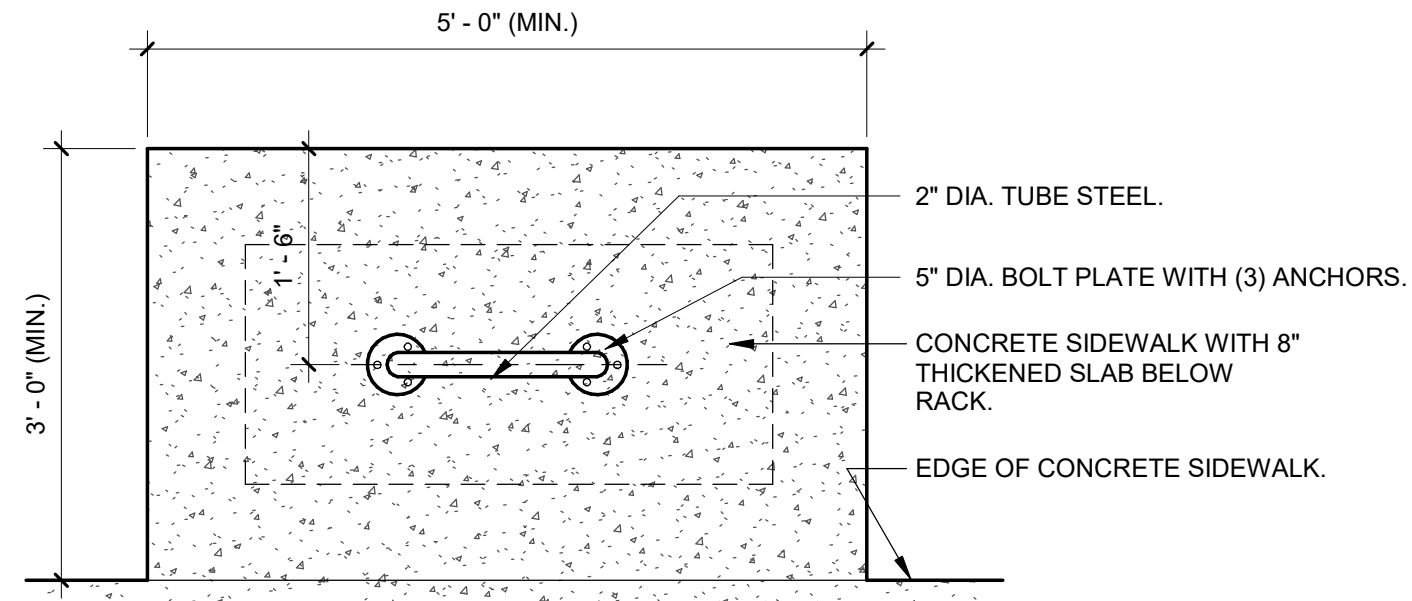
7 FENCE DETAIL
SCALE: 1/2" = 1'-0"



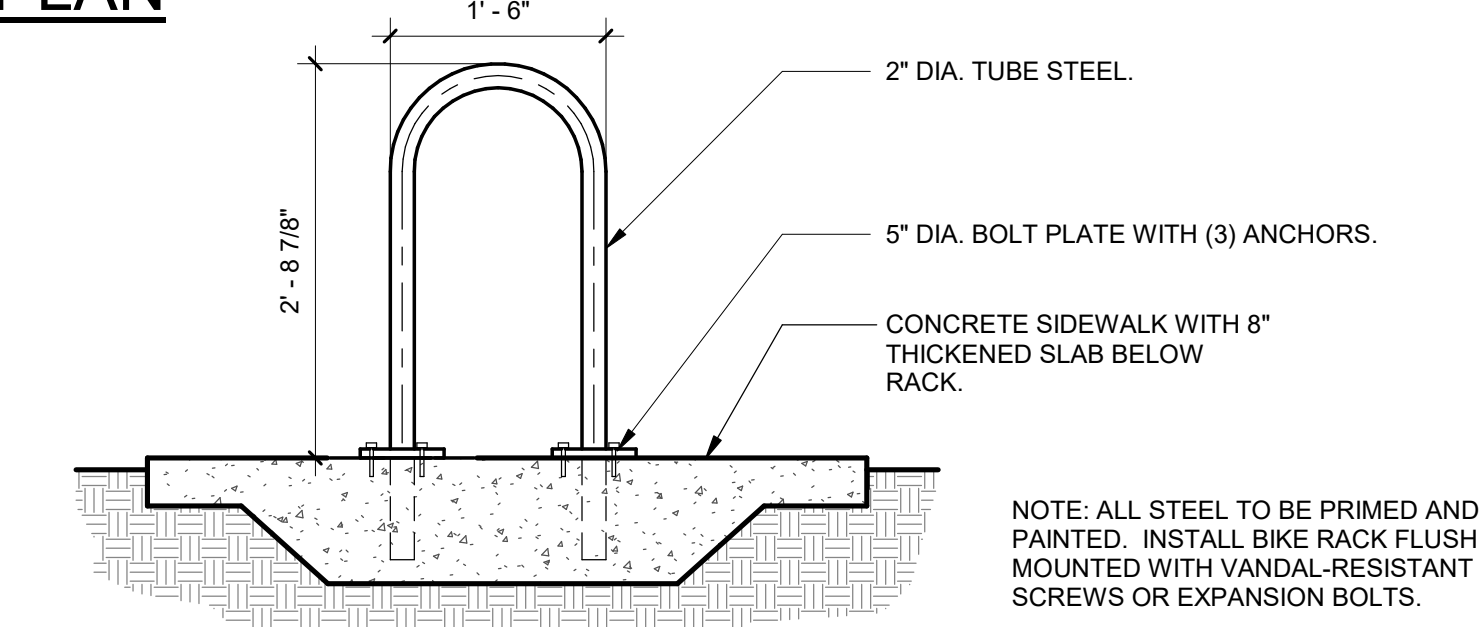
8 VEHICLE GATE DETAIL
SCALE: 3/8" = 1'-0"



4 TRASH ENCLOSURE DETAIL
SCALE: 1/4" = 1'-0"

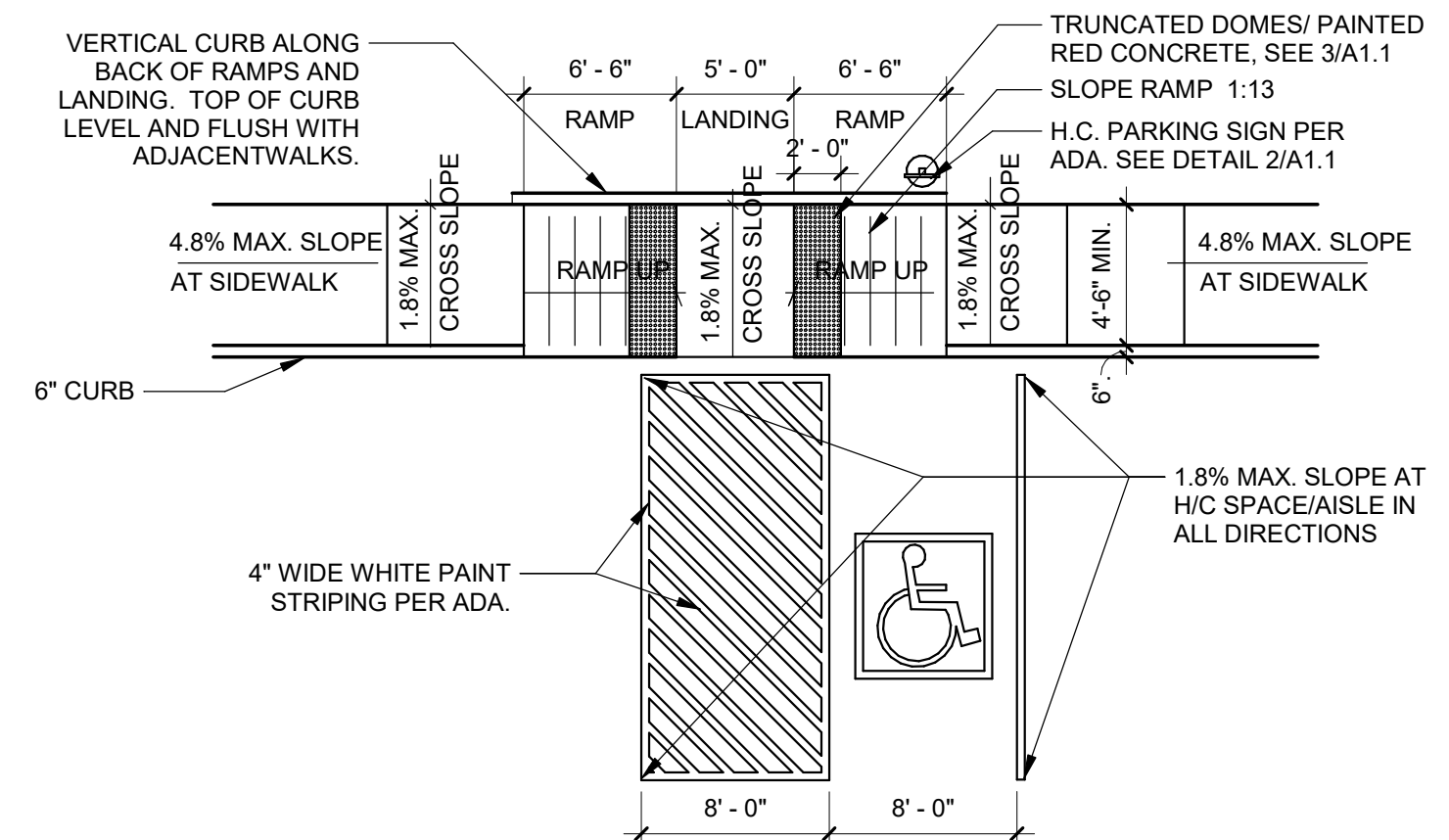


PLAN

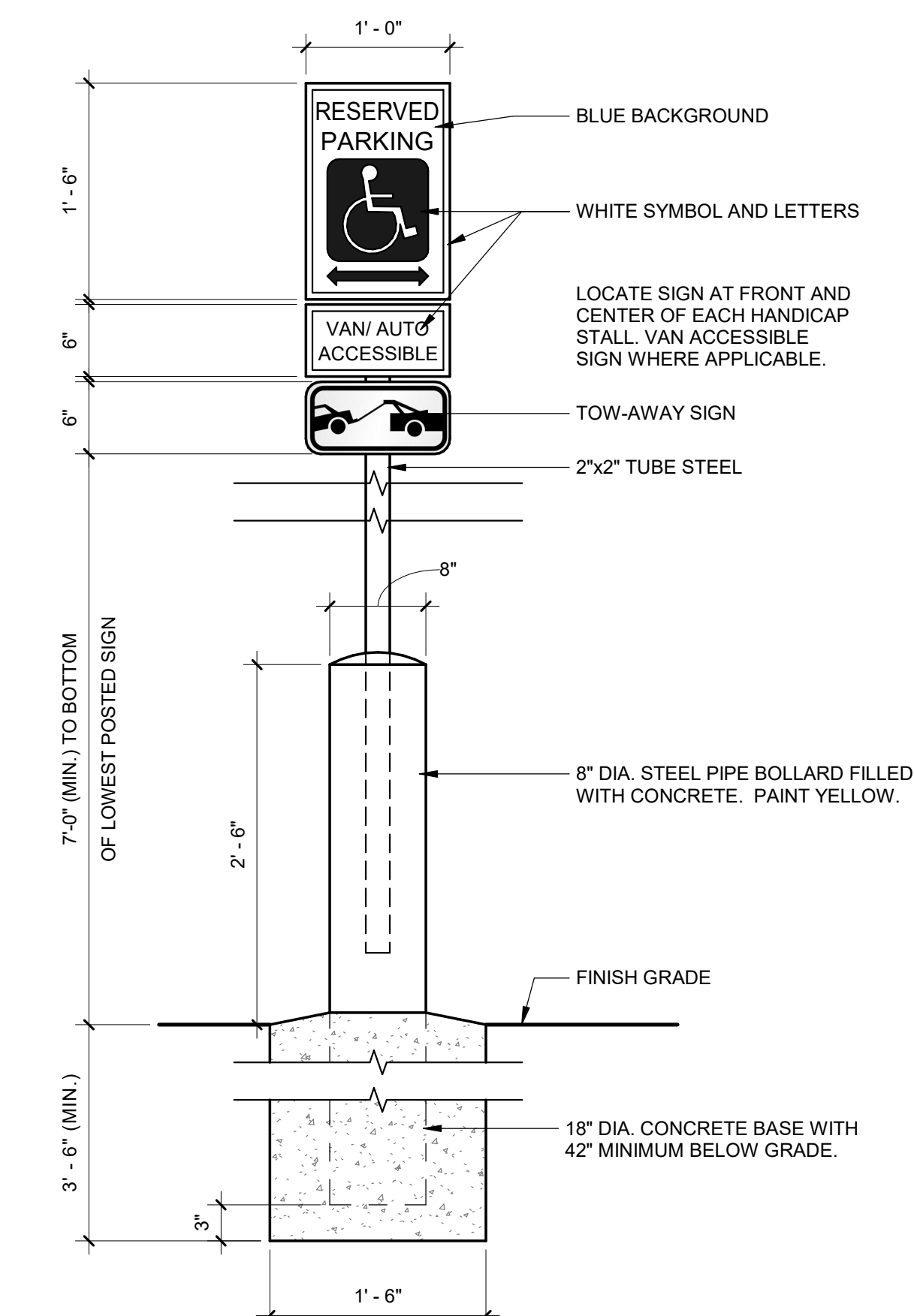


SECTION

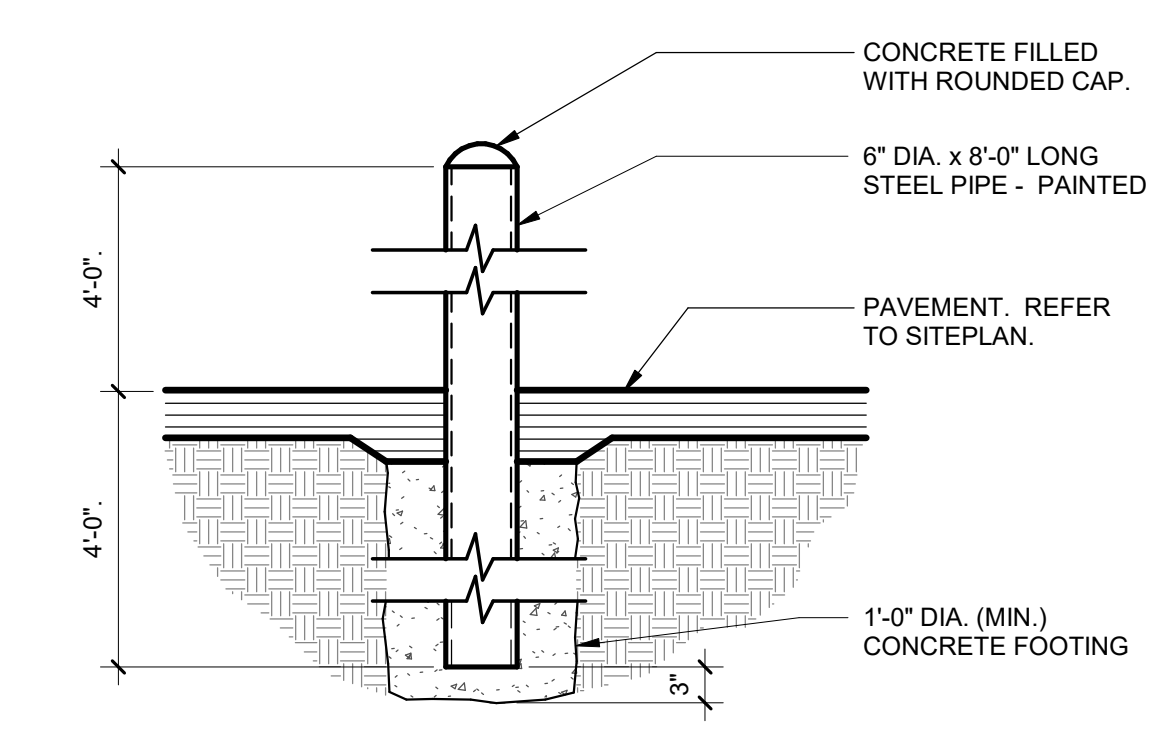
5 BIKE RACK DETAIL
SCALE: 3/4" = 1'-0"



1 HC PARKING DETAIL - PLNG
SCALE: 1/8" = 1'-0"



2 ACCESSIBLE PARKING SIGN DETAIL
SCALE: 1" = 1'-0"



3 BOLLARD DETAIL
SCALE: 3/4" = 1'-0"

DATE	DESC.
8-27-2018	PRE-SUB MTG
9-4-2018	1ST SUB.
11-8-2018	2ND SUB.
12-20-2018	3RD SUB.
1-29-2019	4TH SUB.
3-6-2019	5TH SUB.
4-12-2019	6TH SUB.
8-22-2019	7TH SUB.
10-11-2019	8TH SUB.
6-2-2020	MINOR AMEND.