



April 23, 2024

Mr. Dan Kmiecik, PE
Ambrose Property Group
8888 Keystone Crossing
Suite 1150
Indianapolis, IN 46240

Re: Fine Point Business Park (Building 6)
Traffic Compliance Letter
Aurora, Colorado

Dear Mr. Kmiecik,

This traffic study letter has been prepared for proposed Building 6 of the Fine Point Business Park project. The purpose of this letter is to provide a trip generation comparison to identify traffic compliance with the original traffic impact study. The overall Fine Point Business Park is located on the northeast corner of the 56th Avenue and Jackson Gap Way intersection in Aurora, Colorado. Specifically, Building 6 is proposed to be located on the southwest corner of the 58th Avenue and Powhaton Road intersection. The development area of the current proposal was studied in the *Fine Point Business Park Traffic Impact Study* completed in September 2023. The proposed development is on 14.10 acres and is proposed to include one building containing 192,389 square feet of industrial park building space. A conceptual site plan for the project is attached.

The *Fine Point Business Park Traffic Impact Study* that includes this project area is still currently under review and applicable documents from this study are attached. The trip generation for the current proposal area will be compared to the same development area studied in the master traffic study.

Site-generated traffic estimates are determined through a process known as trip generation. Rates and equations are applied to the proposed land use to estimate traffic generated by the development during a specific time interval. The acknowledged source for trip generation rates is the *Trip Generation Manual*¹ published by the Institute of Transportation Engineers (ITE). ITE has established trip rates in nationwide studies of similar land uses. For this study, Kimley-Horn used the ITE Trip Generation Manual average rate equations that apply to Industrial Park (ITE Land Use Code 130) for traffic associated with this development. The following **Table 1** compares the trip generation of the applicable area from the original traffic study to the current proposal (calculations attached).

¹ Institute of Transportation Engineers, *Trip Generation Manual*, Eleventh Edition, Washington DC, 2021.

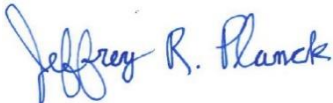
Table 1 – Fine Point Business Park (Building 6) Trip Generation Comparison

Land Use	Weekday Vehicles Trips						
	Daily	AM Peak Hour			PM Peak Hour		
		In	Out	Total	In	Out	Total
Master Traffic Study (Currently under Review)							
Industrial Park – ITE 130 195,000 Square Feet	658	53	13	66	15	51	66
Proposed Development (ITE 11 th Edition)							
Industrial Park – ITE 130 192,389 Square Feet	650	53	12	65	14	51	65
Trip Difference	-8	0	-1	-1	-1	0	-1

As summarized in the trip generation table, Building 6 in the master traffic study was previously calculated to generate approximately 658 weekday daily vehicle trips, with 66 of these trips occurring in both the morning and afternoon peak hours. The currently proposed Building 6 is anticipated to generate the approximately 650 weekday daily trips with 65 of these trips occurring in the morning and afternoon peak hours. As such, the proposed development is expected to generate eight (8) fewer daily trips and one (1) fewer peak hour trip than the corresponding use previously evaluated in the original traffic study. Therefore, the current proposal for Building 6 is in traffic compliance with the original *Fine Point Business Park Traffic Impact Study*, completed in September 2023, which included this development area. It is believed that all potential traffic impacts with the proposed project have been previously addressed within the original traffic study from September 2023. If you have any questions or require anything further, please feel free to call me at (720) 943-9962.

Sincerely,

KIMLEY-HORN AND ASSOCIATES, INC.



Jeffrey R. Planck, P.E.
Project Traffic Manager



Original Traffic Study

T R A F F I C I M P A C T S T U D Y

Fine Point Business Park

Aurora, Colorado

Prepared for
Ambrose Property Group
8888 Keystone Crossing
Suite 150
Indianapolis, Indiana 46240

Prepared by
Kimley-Horn and Associates, Inc.
4582 South Ulster Street
Suite 1500
Denver, Colorado 80237
(303) 228-2300



September 2023

This document, together with the concepts and designs presented herein, as an instrument of service, is intended only for the specific purpose and client for which it was prepared. Reuse of and improper reliance on this document without written authorization and adaptation by Kimley-Horn and Associates, Inc. shall be without liability to Kimley-Horn and Associates, Inc.

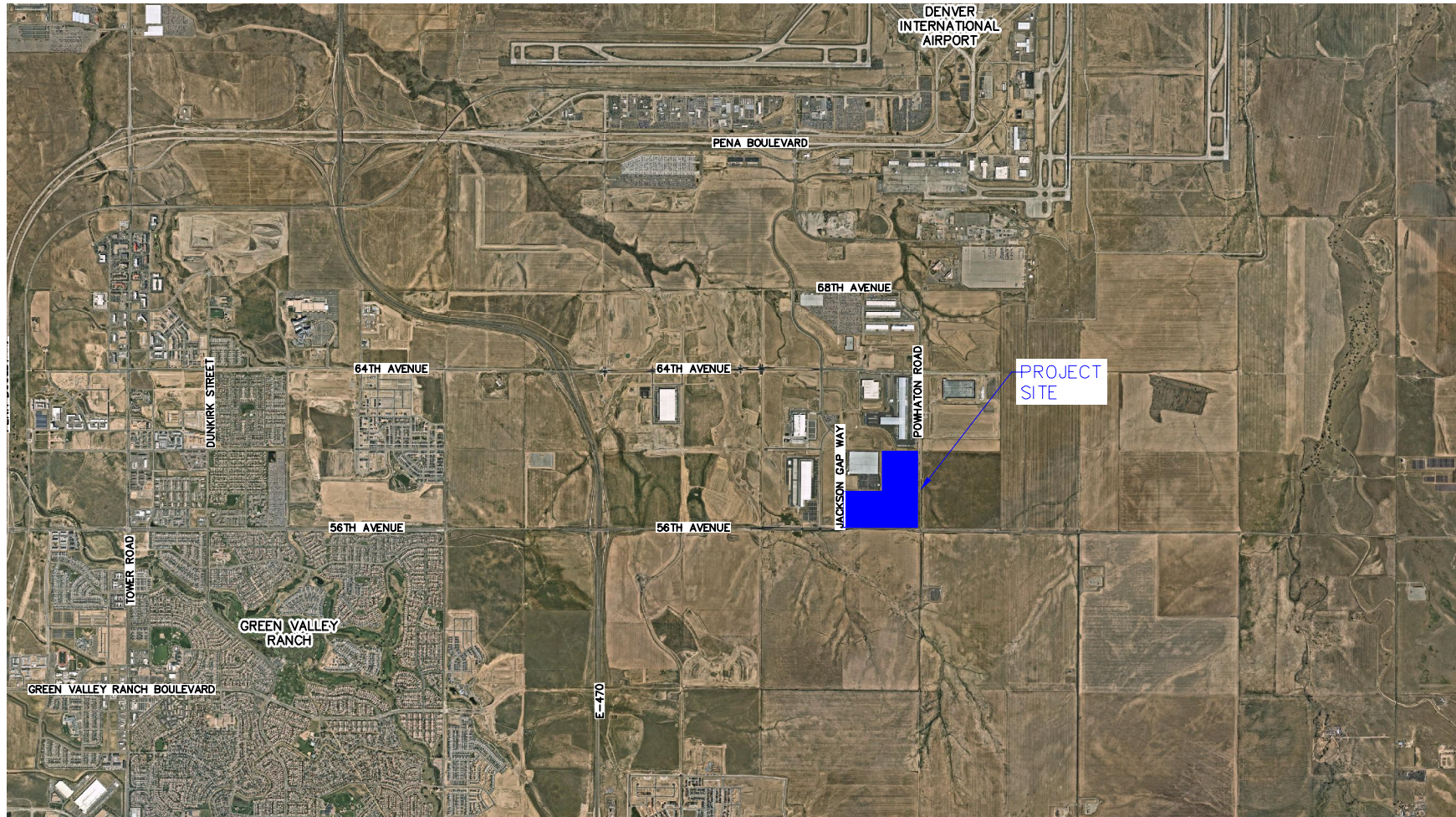
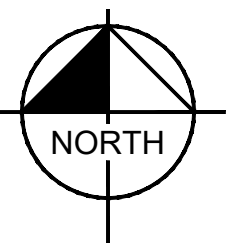
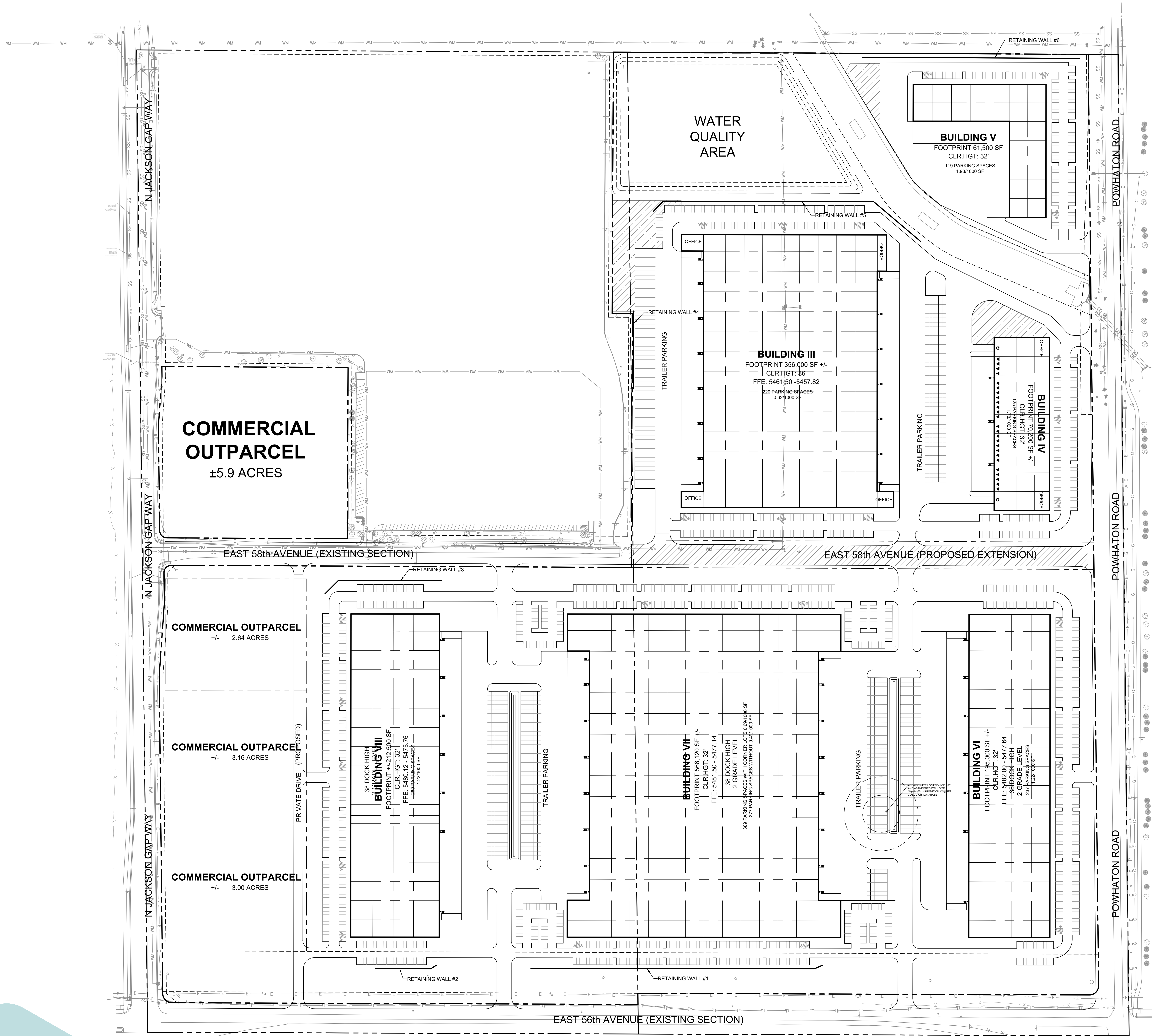


FIGURE 1
FINE POINT BUSINESS PARK
AURORA, COLORADO
VICINITY MAP

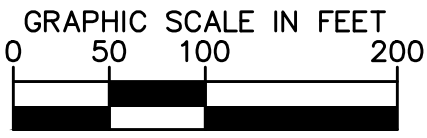
Since the project is a commercial development, pass-by trips are expected. The existing traffic volumes are too low to apply pass-by assignment to some of the intersections. Therefore, the pass-by trips for the retail portion will be applied to the 2040 long-term horizon. It should be noted that pass-by trips were only conservatively applied to the long-term horizon as traffic volumes are currently not high enough to attract pass-by volumes to the level documented in ITE. These pass-by trips are vehicles already on the street network that will be attracted to the gas station. The pass-by percentages were obtained from the ITE "Trip Generation Manual", Eleventh Edition which has a pass-by percentage of 40 percent during the afternoon peak hour for Shopping Plaza. Therefore, accounting for pass-by, expected net new (non-pass-by) trips to the surrounding street network results in the approximately 11,738 weekday daily trips, of which 663 trips and 996 trips are anticipated during the weekday morning and afternoon peak hours, respectively. The trip generation worksheets are included in **Appendix C**.

Table 2 – 2040 Fine Point Business Park Traffic Generation

Land Use and Size	Weekday Vehicle Trips						
	Daily	AM Peak Hour			PM Peak Hour		
		In	Out	Total	In	Out	Total
Industrial Park –							
426,200 SF (Buildings 3 & 4)	1,438	117	28	145	32	113	145
61,500 SF (Building 5)	208	17	4	21	5	16	21
973,620 SF (Buildings 6, 7, & 8)	3,282	268	63	331	73	258	331
Total Industrial Trips							
1,461,320 Square Feet	4,928	402	95	497	110	387	497
Shopping Plaza Non-Pass-By							
160,100 Square Feet	10,810	172	105	277	244	254	499
Shopping Plaza Pass-By	-	-	-	-	163	170	332
Total Non-Pass-By Trips	15,738	574	200	774	354	641	996
Total Pass-By Trips	-	-	-	-	163	170	332



FINE POINT BUSINESS PARK OVERALL SITE LAYOUT



3/21/2023

Trip Generation Worksheets

Project Fine Point Business Park Industrial (Bldg 6) - Original Traffic Study
 Subject Trip Generation for Industrial Park
 Designed by MAG Date April 22, 2024 Job No. 196617000
 Checked by _____ Date _____ Sheet No. 1 of 1

TRIP GENERATION MANUAL TECHNIQUES

ITE Trip Generation Manual 11th Edition, Average Rates

Land Use Code - Industrial Park (130)

Independant Variable - 1000 Square Feet (X)

SF = 195,000

X = 195.000

T = Average Vehicle Trip Ends

Peak Hour of Adjacent Street Traffic, One Hour Between 7 and 9 a.m. (100 Series Page 49)

(T) = 0.34 (X)		Directional Distribution:	81% ent.	19% exit.
(T) = 0.34 *	(195.0)	T = 66	Average Vehicle Trip Ends	
		53 entering	13 exiting	
		53 + 13 = 66		

Peak Hour of Adjacent Street Traffic, One Hour Between 4 and 6 p.m. (100 Series Page 50)

(T) = 0.34 (X)		Directional Distribution:	22% ent.	78% exit.
(T) = 0.34 *	(195.0)	T = 66	Average Vehicle Trip Ends	
		15 entering	51 exiting	
		15 + 51 = 66		

Weekday (100 Series Page 48)

Average Weekday		Directional Distribution:	50% ent.	50% exit.
(T) = 3.37 (X)		T = 658	Average Vehicle Trip Ends	
(T) = 3.37 *	(195.0)	329 entering	329 exiting	
		329 + 329 = 658		

Project Fine Point Business Park Industrial (Bldg 6) - Current Proposal
 Subject Trip Generation for Industrial Park
 Designed by MAG Date April 22, 2024 Job No. 196617000
 Checked by _____ Date _____ Sheet No. 1 of 1

TRIP GENERATION MANUAL TECHNIQUES

ITE Trip Generation Manual 11th Edition, Average Rates

Land Use Code - Industrial Park (130)

Independant Variable - 1000 Square Feet (X)

SF = 192,389

X = 192.389

T = Average Vehicle Trip Ends

Peak Hour of Adjacent Street Traffic, One Hour Between 7 and 9 a.m. (100 Series Page 49)

(T) = 0.34 (X)		Directional Distribution:	81% ent.	19% exit.
(T) = 0.34 *	(192.4)	T = 65	Average Vehicle Trip Ends	
		53 entering	12 exiting	
		53 + 12 = 65		

Peak Hour of Adjacent Street Traffic, One Hour Between 4 and 6 p.m. (100 Series Page 50)

(T) = 0.34 (X)		Directional Distribution:	22% ent.	78% exit.
(T) = 0.34 *	(192.4)	T = 65	Average Vehicle Trip Ends	
		14 entering	51 exiting	
		14 + 51 = 65		

Weekday (100 Series Page 48)

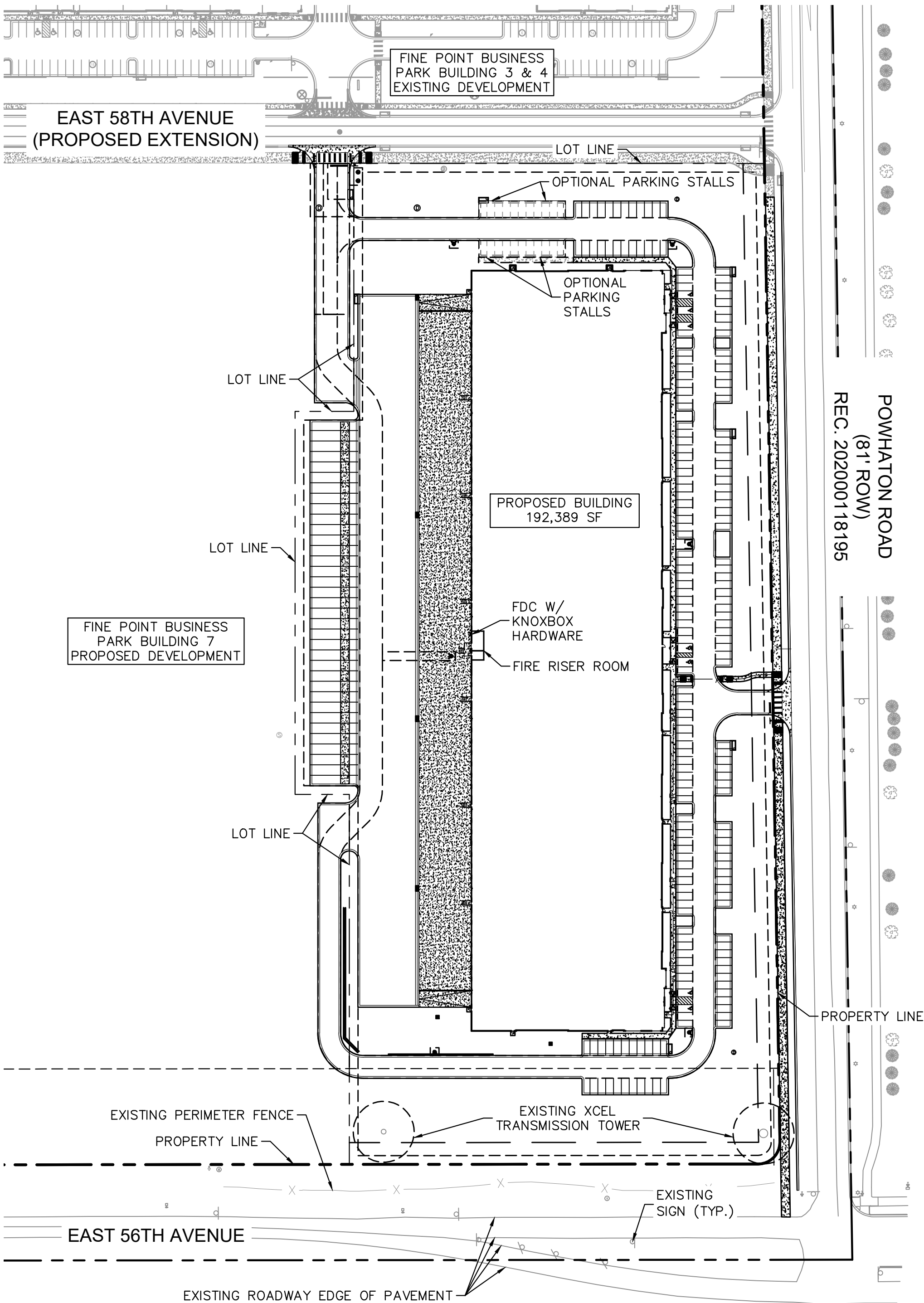
Average Weekday		Directional Distribution:	50% ent.	50% exit.
(T) = 3.37 (X)		T = 650	Average Vehicle Trip Ends	
(T) = 3.37 *	(192.4)	325 entering	325 exiting	
		325 + 325 = 650		

Conceptual Site Plan

K:\DEN_Civil\196617001_Fine Point B6\CADD\PlanSheets\CSP\196617001_SP_OV.dwg Mavis, August 4/8/2024 10:44 AM

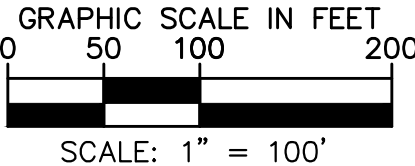
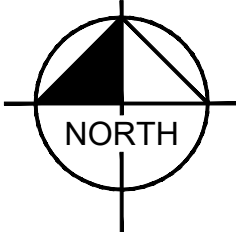
FINE POINT BUSINESS PARK BLDG 6

LOCATED IN THE SE 1/4 OF SECTION 8,
TOWNSHIP 3 SOUTH, RANGE 65 WEST OF THE 6TH P.M.,
CITY OF AURORA, ADAMS COUNTY, STATE OF COLORADO



LEGEND

- PROPERTY LINE
- - - LOT LINE
- - - EASEMENT LINE
- AR ACCESSIBLE ROUTE
- ===== CONCRETE CURB & GUTTER
- [Pattern] EXISTING CONCRETE
- [Pattern] CONCRETE SIDEWALK
- [Pattern] HEAVY DUTY CONCRETE
- [Symbol] EXISTING FIRE HYDRANT
- [Symbol] FIRE HYDRANT
- [Symbol] FDC W/ KNOX HARDWARE
- [Symbol] KNOX BOX



Kimley»Horn

KIMLEY-HORN AND ASSOCIATES, INC.
6205 South Staple
Greenwood Village, Colorado 80111 (303) 228-2300

FINE POINT BUSINESS PARK BLDG 6
SITE PLAN
LOTS 1 AND 2, BLOCK 1, FINE POINT BUSINESS PARK SUBDIVISION FILING NO. 2
CITY OF AURORA, STATE OF COLORADO
OVERALL SITE PLAN

DATE: 8/28/2023
DESIGNED BY: QMD
DRAWN BY: AOSD
CHECKED BY: BAC

FILE NO.
196617001_SP_OV
PROJECT NO.
196617001

SHEET NO.
3

NO.
BY
DATE
APPR

REVISION