

Parcel Map Check Report

Client: Prepared by:

Client Preparer

Client Company Your Company Name

Address 1 123 Main Street

Date: 5/10/2024 2:17:07 PM

Parcel Name: REVISED JEWELL URBAN COTTAGES FIL NO 1|1 - 1

Description:

Process segment order counterclockwise: False

Enable mapcheck across chord: False

North:1,674,274.94' East:3,180,550.64'

Segment# 1: Line

Course: S89°20'02"W Length: 30.00'

North: 1,674,274.59' East: 3,180,520.64'

Segment# 2: Line

Course: N0°39'58"W Length: 91.00'

North: 1,674,365.59' East: 3,180,519.59'

Segment# 3: Line

Course: N89°20'02"E Length: 30.00'

North: 1,674,365.94' East: 3,180,549.58'

Segment# 4: Line

Course: S0°39'58"E Length: 91.00'

North: 1,674,274.94' East: 3,180,550.64'

Perimeter: 242.00' Area: 2,730Sq.Ft.

Error Closure: 0.00 Course: N0°00'00"E

Error North : 0.000 East: 0.000

Precision 1: 242,000,000.00

Parcel Name: REVISED JEWELL URBAN COTTAGES FIL NO 1|1 - 10

Description:

Process segment order counterclockwise: False

Enable mapcheck across chord: False

North:1,674,369.27' East:3,180,836.56'

Segment# 1: Line

Course: S0°39'58"E Length: 91.00'

North: 1,674,278.28' East: 3,180,837.62'

Segment# 2: Line

Course: S89°20'02"W Length: 47.00'

North: 1,674,277.73' East: 3,180,790.63'

Segment# 3: Line

Course: N0°39'58"W Length: 91.00'

North: 1,674,368.73' East: 3,180,789.57'

Segment# 4: Line

Course: N89°20'02"E Length: 47.00'
North: 1,674,369.27' East: 3,180,836.56'

Perimeter: 276.00' Area: 4,277Sq.Ft.
Error Closure: 0.00 Course: N0°00'00"E
Error North : 0.000 East: 0.000

Precision 1: 276,000,000.00

Parcel Name: REVISED JEWELL URBAN COTTAGES FIL NO 1|1 - 11

Description:

Process segment order counterclockwise: False

Enable mapcheck across chord: False

North:1,674,278.28' East:3,180,837.62'

Segment# 1: Line

Course: S0°39'58"E Length: 73.50'
North: 1,674,204.79' East: 3,180,838.48'

Segment# 2: Curve

Length: 18.90' Radius: 28.00'
Delta: 38°40'58" Tangent: 9.83'
Chord: 18.55' Course: S18°40'29"W
Course In: S89°20'00"W Course Out: S51°59'01"E
RP North: 1,674,204.46' East: 3,180,810.48'
End North: 1,674,187.21' East: 3,180,832.54'

Segment# 3: Line

Course: S89°20'02"W Length: 40.86'
North: 1,674,186.74' East: 3,180,791.68'

Segment# 4: Line

Course: N0°39'58"W Length: 91.00'
North: 1,674,277.73' East: 3,180,790.62'

Segment# 5: Line

Course: N89°20'02"E Length: 47.00'
North: 1,674,278.28' East: 3,180,837.62'

Perimeter: 271.26' Area: 4,243Sq.Ft.
Error Closure: 0.00 Course: S80°47'44"W
Error North : 0.000 East: -0.003

Precision 1: 271,260,000.00

Parcel Name: REVISED JEWELL URBAN COTTAGES FIL NO 1|1 - 12

Description:

Process segment order counterclockwise: False
Enable mapcheck across chord: False
North:1,674,277.39' East:3,180,760.63'

Segment# 1: Line
Course: N89°20'02"E Length: 30.00'
North: 1,674,277.73' East: 3,180,790.63'

Segment# 2: Line
Course: S0°39'58"E Length: 91.00'
North: 1,674,186.74' East: 3,180,791.68'

Segment# 3: Line
Course: S89°20'02"W Length: 30.00'
North: 1,674,186.39' East: 3,180,761.69'

Segment# 4: Line
Course: N0°39'58"W Length: 91.00'
North: 1,674,277.39' East: 3,180,760.63'

Perimeter: 242.00' Area: 2,730Sq.Ft.
Error Closure: 0.00 Course: N0°00'00"E
Error North : 0.000 East: 0.000

Precision 1: 242,000,000.00

Parcel Name: REVISED JEWELL URBAN COTTAGES FIL NO 1|1 - 13
Description:

Process segment order counterclockwise: False
Enable mapcheck across chord: False
North:1,674,277.04' East:3,180,730.63'

Segment# 1: Line
Course: N89°20'02"E Length: 30.00'
North: 1,674,277.39' East: 3,180,760.63'

Segment# 2: Line
Course: S0°39'58"E Length: 91.00'
North: 1,674,186.39' East: 3,180,761.69'

Segment# 3: Line
Course: S89°20'02"W Length: 30.00'
North: 1,674,186.04' East: 3,180,731.69'

Segment# 4: Line
Course: N0°39'58"W Length: 91.00'
North: 1,674,277.04' East: 3,180,730.63'

Perimeter: 242.00' Area: 2,730Sq.Ft.
Error Closure: 0.00 Course: N0°00'00"E

Error North : 0.000 East: 0.000

Precision 1: 242,000,000.00

Parcel Name: REVISED JEWELL URBAN COTTAGES FIL NO 1|1 - 14

Description:

Process segment order counterclockwise: False

Enable mapcheck across chord: False

North:1,674,276.69' East:3,180,700.63'

Segment# 1: Line

Course: N89°20'02"E Length: 30.00'

North: 1,674,277.04' East: 3,180,730.63'

Segment# 2: Line

Course: S0°39'58"E Length: 91.00'

North: 1,674,186.04' East: 3,180,731.69'

Segment# 3: Line

Course: S89°20'02"W Length: 30.00'

North: 1,674,185.69' East: 3,180,701.69'

Segment# 4: Line

Course: N0°39'58"W Length: 91.00'

North: 1,674,276.69' East: 3,180,700.63'

Perimeter: 242.00' Area: 2,730Sq.Ft.

Error Closure: 0.00 Course: N0°00'00"E

Error North : 0.000 East: 0.000

Precision 1: 242,000,000.00

Parcel Name: REVISED JEWELL URBAN COTTAGES FIL NO 1|1 - 15

Description:

Process segment order counterclockwise: False

Enable mapcheck across chord: False

North:1,674,276.34' East:3,180,670.63'

Segment# 1: Line

Course: N89°20'02"E Length: 30.00'

North: 1,674,276.69' East: 3,180,700.63'

Segment# 2: Line

Course: S0°39'58"E Length: 91.00'

North: 1,674,185.69' East: 3,180,701.69'

Segment# 3: Line

Course: S89°20'02"W Length: 30.00'

North: 1,674,185.34' East: 3,180,671.69'

Segment# 4: Line
Course: N0°39'58"W Length: 91.00'
North: 1,674,276.34' East: 3,180,670.63'

Perimeter: 242.00' Area: 2,730Sq.Ft.
Error Closure: 0.00 Course: N0°00'00"E
Error North : 0.000 East: 0.000

Precision 1: 242,000,000.00

Parcel Name: REVISED JEWELL URBAN COTTAGES FIL NO 1|1 - 16
Description:

Process segment order counterclockwise: False
Enable mapcheck across chord: False
North:1,674,275.99' East:3,180,640.64'

Segment# 1: Line
Course: N89°20'02"E Length: 30.00'
North: 1,674,276.34' East: 3,180,670.63'

Segment# 2: Line
Course: S0°39'58"E Length: 91.00'
North: 1,674,185.34' East: 3,180,671.69'

Segment# 3: Line
Course: S89°20'02"W Length: 30.00'
North: 1,674,185.00' East: 3,180,641.69'

Segment# 4: Line
Course: N0°39'58"W Length: 91.00'
North: 1,674,275.99' East: 3,180,640.64'

Perimeter: 242.00' Area: 2,730Sq.Ft.
Error Closure: 0.00 Course: N0°00'00"E
Error North : 0.000 East: 0.000

Precision 1: 242,000,000.00

Parcel Name: REVISED JEWELL URBAN COTTAGES FIL NO 1|1 - 17
Description:

Process segment order counterclockwise: False
Enable mapcheck across chord: False
North:1,674,275.64' East:3,180,610.64'

Segment# 1: Line
Course: N89°20'02"E Length: 30.00'
North: 1,674,275.99' East: 3,180,640.64'

Segment# 2: Line
Course: S0°39'58"E Length: 91.00'

North: 1,674,185.00' East: 3,180,641.69'

Segment# 3: Line

Course: S89°20'02"W Length: 30.00'
North: 1,674,184.65' East: 3,180,611.70'

Segment# 4: Line

Course: N0°39'58"W Length: 91.00'
North: 1,674,275.64' East: 3,180,610.64'

Perimeter: 242.00' Area: 2,730Sq.Ft.
Error Closure: 0.00 Course: N0°00'00"E
Error North : 0.000 East: 0.000

Precision 1: 242,000,000.00

Parcel Name: REVISED JEWELL URBAN COTTAGES FIL NO 1|1 - 18

Description:

Process segment order counterclockwise: False

Enable mapcheck across chord: False

North:1,674,275.29' East:3,180,580.64'

Segment# 1: Line

Course: N89°20'02"E Length: 30.00'
North: 1,674,275.64' East: 3,180,610.64'

Segment# 2: Line

Course: S0°39'58"E Length: 91.00'
North: 1,674,184.65' East: 3,180,611.70'

Segment# 3: Line

Course: S89°20'02"W Length: 30.00'
North: 1,674,184.30' East: 3,180,581.70'

Segment# 4: Line

Course: N0°39'58"W Length: 91.00'
North: 1,674,275.29' East: 3,180,580.64'

Perimeter: 242.00' Area: 2,730Sq.Ft.
Error Closure: 0.00 Course: N0°00'00"E
Error North : 0.000 East: 0.000

Precision 1: 242,000,000.00

Parcel Name: REVISED JEWELL URBAN COTTAGES FIL NO 1|1 - 19

Description:

Process segment order counterclockwise: False

Enable mapcheck across chord: False

North:1,674,274.94' East:3,180,550.64'

Segment# 1: Line
Course: N89°20'02"E Length: 30.00'
North: 1,674,275.29' East: 3,180,580.64'

Segment# 2: Line
Course: S0°39'58"E Length: 91.00'
North: 1,674,184.30' East: 3,180,581.70'

Segment# 3: Line
Course: S89°20'02"W Length: 30.00'
North: 1,674,183.95' East: 3,180,551.70'

Segment# 4: Line
Course: N0°39'58"W Length: 91.00'
North: 1,674,274.94' East: 3,180,550.64'

Perimeter: 242.00' Area: 2,730Sq.Ft.
Error Closure: 0.00 Course: N0°00'00"E
Error North : 0.000 East: 0.000

Precision 1: 242,000,000.00

Parcel Name: REVISED JEWELL URBAN COTTAGES FIL NO 1|1 - 2

Description:

Process segment order counterclockwise: False

Enable mapcheck across chord: False

North:1,674,275.29' East:3,180,580.64'

Segment# 1: Line
Course: S89°20'02"W Length: 30.00'
North: 1,674,274.94' East: 3,180,550.64'

Segment# 2: Line
Course: N0°39'58"W Length: 91.00'
North: 1,674,365.94' East: 3,180,549.58'

Segment# 3: Line
Course: N89°20'02"E Length: 30.00'
North: 1,674,366.29' East: 3,180,579.58'

Segment# 4: Line
Course: S0°39'58"E Length: 91.00'
North: 1,674,275.29' East: 3,180,580.64'

Perimeter: 242.00' Area: 2,730Sq.Ft.
Error Closure: 0.00 Course: N0°00'00"E
Error North : 0.000 East: 0.000

Precision 1: 242,000,000.00

Parcel Name: REVISED JEWELL URBAN COTTAGES FIL NO 1|1 - 20

Description:

Process segment order counterclockwise: False

Enable mapcheck across chord: False

North:1,674,274.59' East:3,180,520.64'

Segment# 1: Line

Course: N89°20'02"E Length: 30.00'

North: 1,674,274.94' East: 3,180,550.64'

Segment# 2: Line

Course: S0°39'58"E Length: 91.00'

North: 1,674,183.95' East: 3,180,551.70'

Segment# 3: Line

Course: S89°20'02"W Length: 30.00'

North: 1,674,183.60' East: 3,180,521.70'

Segment# 4: Line

Course: N0°39'58"W Length: 91.00'

North: 1,674,274.59' East: 3,180,520.64'

Perimeter: 242.00' Area: 2,730Sq.Ft.

Error Closure: 0.00 Course: N0°00'00"E

Error North : 0.000 East: 0.000

Precision 1: 242,000,000.00

Parcel Name: REVISED JEWELL URBAN COTTAGES FIL NO 1|1 - 21

Description:

Process segment order counterclockwise: False

Enable mapcheck across chord: False

North:1,674,183.25' East:3,180,491.70'

Segment# 1: Line

Course: N0°39'58"W Length: 91.00'

North: 1,674,274.25' East: 3,180,490.65'

Segment# 2: Line

Course: N89°20'02"E Length: 30.00'

North: 1,674,274.59' East: 3,180,520.64'

Segment# 3: Line

Course: S0°39'58"E Length: 91.00'

North: 1,674,183.60' East: 3,180,521.70'

Segment# 4: Line

Course: S89°20'02"W Length: 30.00'

North: 1,674,183.25' East: 3,180,491.70'

Perimeter: 242.00' Area: 2,730Sq.Ft.
Error Closure: 0.00 Course: N0°00'00"E
Error North : 0.000 East: 0.000

Precision 1: 242,000,000.00

Parcel Name: REVISED JEWELL URBAN COTTAGES FIL NO 1|1 - 22

Description:

Process segment order counterclockwise: False

Enable mapcheck across chord: False

North:1,674,182.90' East:3,180,461.71'

Segment# 1: Line

Course: N0°39'58"W Length: 91.00'

North: 1,674,273.90' East: 3,180,460.65'

Segment# 2: Line

Course: N89°20'02"E Length: 30.00'

North: 1,674,274.25' East: 3,180,490.65'

Segment# 3: Line

Course: S0°39'58"E Length: 91.00'

North: 1,674,183.25' East: 3,180,491.70'

Segment# 4: Line

Course: S89°20'02"W Length: 30.00'

North: 1,674,182.90' East: 3,180,461.71'

Perimeter: 242.00' Area: 2,730Sq.Ft.

Error Closure: 0.00 Course: N0°00'00"E

Error North : 0.000 East: 0.000

Precision 1: 242,000,000.00

Parcel Name: REVISED JEWELL URBAN COTTAGES FIL NO 1|1 - 23

Description:

Process segment order counterclockwise: False

Enable mapcheck across chord: False

North:1,674,182.55' East:3,180,431.71'

Segment# 1: Line

Course: N0°39'58"W Length: 91.00'

North: 1,674,273.55' East: 3,180,430.65'

Segment# 2: Line

Course: N89°20'02"E Length: 30.00'

North: 1,674,273.90' East: 3,180,460.65'

Segment# 3: Line

Course: S0°39'58"E Length: 91.00'

North: 1,674,182.90' East: 3,180,461.71'

Segment# 4: Line

Course: S89°20'02"W Length: 30.00'
North: 1,674,182.55' East: 3,180,431.71'

Perimeter: 242.00' Area: 2,730Sq.Ft.
Error Closure: 0.00 Course: N0°00'00"E
Error North : 0.000 East: 0.000

Precision 1: 242,000,000.00

Parcel Name: REVISED JEWELL URBAN COTTAGES FIL NO 1|1 - 24

Description:

Process segment order counterclockwise: False

Enable mapcheck across chord: False

North:1,674,273.55' East:3,180,430.65'

Segment# 1: Line

Course: S0°39'58"E Length: 91.00'
North: 1,674,182.55' East: 3,180,431.71'

Segment# 2: Line

Course: S89°20'02"W Length: 41.35'
North: 1,674,182.07' East: 3,180,390.36'

Segment# 3: Curve

Length: 18.90' Radius: 28.00'
Delta: 38°40'56" Tangent: 9.83'
Chord: 18.55' Course: N20°00'26"W
Course In: N50°39'06"E Course Out: S89°20'02"W
RP North: 1,674,199.83' East: 3,180,412.01'
End North: 1,674,199.50' East: 3,180,384.02'

Segment# 4: Line

Course: N0°39'58"W Length: 73.50'
North: 1,674,273.00' East: 3,180,383.16'

Segment# 5: Line

Course: N89°20'02"E Length: 47.50'
North: 1,674,273.55' East: 3,180,430.66'

Perimeter: 272.25' Area: 4,288Sq.Ft.
Error Closure: 0.01 Course: N89°13'56"E
Error North : 0.000 East: 0.007

Precision 1: 27,225.00

Parcel Name: REVISED JEWELL URBAN COTTAGES FIL NO 1|1 - 25

Description:

Process segment order counterclockwise: False
Enable mapcheck across chord: False
North:1,674,147.81' East:3,180,583.25'

Segment# 1: Line
Course: S0°39'58"E Length: 29.00'
North: 1,674,118.82' East: 3,180,583.59'

Segment# 2: Line
Course: S89°20'02"W Length: 103.00'
North: 1,674,117.62' East: 3,180,480.60'

Segment# 3: Line
Course: N0°39'58"W Length: 29.00'
North: 1,674,146.62' East: 3,180,480.26'

Segment# 4: Line
Course: N89°20'02"E Length: 103.00'
North: 1,674,147.81' East: 3,180,583.25'

Perimeter: 264.00' Area: 2,987Sq.Ft.
Error Closure: 0.00 Course: N0°00'00"E
Error North : 0.000 East: 0.000

Precision 1: 264,000,000.00

Parcel Name: REVISED JEWELL URBAN COTTAGES FIL NO 1|1 - 26
Description:

Process segment order counterclockwise: False
Enable mapcheck across chord: False
North:1,674,118.82' East:3,180,583.59'

Segment# 1: Line
Course: S0°39'58"E Length: 5.00'
North: 1,674,113.82' East: 3,180,583.65'

Segment# 2: Line
Course: S0°39'58"E Length: 24.00'
North: 1,674,089.82' East: 3,180,583.93'

Segment# 3: Line
Course: S89°20'02"W Length: 103.00'
North: 1,674,088.62' East: 3,180,480.94'

Segment# 4: Line
Course: N0°39'58"W Length: 29.00'
North: 1,674,117.62' East: 3,180,480.60'

Segment# 5: Line
Course: N89°20'02"E Length: 103.00'

North: 1,674,118.82' East: 3,180,583.59'

Perimeter: 264.00' Area: 2,987Sq.Ft.
Error Closure: 0.00 Course: N0°00'00"E
Error North : 0.000 East: 0.000

Precision 1: 264,000,000.00

Parcel Name: REVISED JEWELL URBAN COTTAGES FIL NO 1|1 - 27
Description:

Process segment order counterclockwise: False
Enable mapcheck across chord: False
North:1,674,084.90' East:3,180,676.99'

Segment# 1: Line
Course: S89°20'02"W Length: 93.00'
North: 1,674,083.82' East: 3,180,584.00'

Segment# 2: Line
Course: N0°39'58"W Length: 6.00'
North: 1,674,089.82' East: 3,180,583.93'

Segment# 3: Line
Course: N0°39'58"W Length: 24.00'
North: 1,674,113.82' East: 3,180,583.65'

Segment# 4: Line
Course: N89°20'02"E Length: 93.00'
North: 1,674,114.90' East: 3,180,676.64'

Segment# 5: Line
Course: S0°39'58"E Length: 30.00'
North: 1,674,084.90' East: 3,180,676.99'

Perimeter: 246.00' Area: 2,790Sq.Ft.
Error Closure: 0.00 Course: N0°00'00"E
Error North : 0.000 East: 0.000

Precision 1: 246,000,000.00

Parcel Name: REVISED JEWELL URBAN COTTAGES FIL NO 1|1 - 28
Description:

Process segment order counterclockwise: False
Enable mapcheck across chord: False
North:1,674,118.82' East:3,180,583.59'

Segment# 1: Line
Course: N0°39'58"W Length: 29.00'
North: 1,674,147.81' East: 3,180,583.25'

Segment# 2: Line
Course: N89°20'02"E Length: 93.00'
North: 1,674,148.90' East: 3,180,676.25'

Segment# 3: Line
Course: S0°39'58"E Length: 34.00'
North: 1,674,114.90' East: 3,180,676.64'

Segment# 4: Line
Course: S89°20'02"W Length: 93.00'
North: 1,674,113.82' East: 3,180,583.65'

Segment# 5: Line
Course: N0°39'58"W Length: 5.00'
North: 1,674,118.82' East: 3,180,583.59'

Perimeter: 254.00' Area: 3,162Sq.Ft.
Error Closure: 0.00 Course: N90°00'00"E
Error North : 0.000 East: 0.000

Precision 1: 254,000,000.00

Parcel Name: REVISED JEWELL URBAN COTTAGES FIL NO 1|1 - 29

Description:

Process segment order counterclockwise: False

Enable mapcheck across chord: False

North:1,674,150.15' East:3,180,784.24'

Segment# 1: Line
Course: S0°39'58"E Length: 34.00'
North: 1,674,116.15' East: 3,180,784.64'

Segment# 2: Line
Course: S89°20'02"W Length: 93.00'
North: 1,674,115.07' East: 3,180,691.64'

Segment# 3: Line
Course: N0°39'58"W Length: 34.00'
North: 1,674,149.07' East: 3,180,691.25'

Segment# 4: Line
Course: N89°20'02"E Length: 93.00'
North: 1,674,150.15' East: 3,180,784.24'

Perimeter: 254.00' Area: 3,162Sq.Ft.
Error Closure: 0.00 Course: N0°00'00"E
Error North : 0.000 East: 0.000

Precision 1: 254,000,000.00

Parcel Name: REVISED JEWELL URBAN COTTAGES FIL NO 1|1 - 3

Description:

Process segment order counterclockwise: False

Enable mapcheck across chord: False

North:1,674,275.64' East:3,180,610.64'

Segment# 1: Line

Course: S89°20'02"W Length: 30.00'

North: 1,674,275.29' East: 3,180,580.64'

Segment# 2: Line

Course: N0°39'58"W Length: 91.00'

North: 1,674,366.29' East: 3,180,579.58'

Segment# 3: Line

Course: N89°20'02"E Length: 30.00'

North: 1,674,366.63' East: 3,180,609.58'

Segment# 4: Line

Course: S0°39'58"E Length: 91.00'

North: 1,674,275.64' East: 3,180,610.64'

Perimeter: 242.00' Area: 2,730Sq.Ft.

Error Closure: 0.00 Course: N0°00'00"E

Error North : 0.000 East: 0.000

Precision 1: 242,000,000.00

Parcel Name: REVISED JEWELL URBAN COTTAGES FIL NO 1|1 - 30

Description:

Process segment order counterclockwise: False

Enable mapcheck across chord: False

North:1,674,086.16' East:3,180,784.98'

Segment# 1: Line

Course: S89°20'02"W Length: 93.00'

North: 1,674,085.07' East: 3,180,691.99'

Segment# 2: Line

Course: N0°39'58"W Length: 30.00'

North: 1,674,115.07' East: 3,180,691.64'

Segment# 3: Line

Course: N89°20'02"E Length: 93.00'

North: 1,674,116.15' East: 3,180,784.64'

Segment# 4: Line

Course: S0°39'58"E Length: 30.00'

North: 1,674,086.16' East: 3,180,784.98'

Perimeter: 246.00' Area: 2,790Sq.Ft.
Error Closure: 0.00 Course: N0°00'00"E
Error North : 0.000 East: 0.000

Precision 1: 246,000,000.00

Parcel Name: REVISED JEWELL URBAN COTTAGES FIL NO 1|1 - 31

Description:

Process segment order counterclockwise: False

Enable mapcheck across chord: False

North:1,674,087.24' East:3,180,877.98'

Segment# 1: Line

Course: S89°20'02"W Length: 93.00'

North: 1,674,086.16' East: 3,180,784.98'

Segment# 2: Line

Course: N0°39'58"W Length: 30.00'

North: 1,674,116.15' East: 3,180,784.64'

Segment# 3: Line

Course: N89°20'02"E Length: 93.00'

North: 1,674,117.23' East: 3,180,877.63'

Segment# 4: Line

Course: S0°39'58"E Length: 30.00'

North: 1,674,087.24' East: 3,180,877.98'

Perimeter: 246.00' Area: 2,790Sq.Ft.

Error Closure: 0.00 Course: N0°00'00"E

Error North : 0.000 East: 0.000

Precision 1: 246,000,000.00

Parcel Name: REVISED JEWELL URBAN COTTAGES FIL NO 1|1 - 32

Description:

Process segment order counterclockwise: False

Enable mapcheck across chord: False

North:1,674,165.40' East:3,180,877.07'

Segment# 1: Line

Course: S0°39'58"E Length: 48.17'

North: 1,674,117.24' East: 3,180,877.63'

Segment# 2: Line

Course: S89°20'02"W Length: 93.00'

North: 1,674,116.15' East: 3,180,784.64'

Segment# 3: Line

Course: N0°39'58"W Length: 34.00'

North: 1,674,150.15' East: 3,180,784.24'

Segment# 4: Line

Course: N89°20'02"E Length: 73.87'
North: 1,674,151.01' East: 3,180,858.11'

Segment# 5: Curve

Length: 25.50' Radius: 20.00'
Delta: 73°03'10" Tangent: 14.81'
Chord: 23.81' Course: N52°48'27"E
Course In: N0°39'58"W Course Out: S73°43'08"E
RP North: 1,674,171.01' East: 3,180,857.87'
End North: 1,674,165.40' East: 3,180,877.07'

Perimeter: 274.54' Area: 3,234Sq.Ft.
Error Closure: 0.00 Course: N82°07'37"E
Error North : 0.000 East: 0.001

Precision 1: 274,540,000.00

Parcel Name: REVISED JEWELL URBAN COTTAGES FIL NO 1|1 - 4
Description:

Process segment order counterclockwise: False
Enable mapcheck across chord: False
North:1,674,275.99' East:3,180,640.64'

Segment# 1: Line

Course: S89°20'02"W Length: 30.00'
North: 1,674,275.64' East: 3,180,610.64'

Segment# 2: Line

Course: N0°39'58"W Length: 91.00'
North: 1,674,366.63' East: 3,180,609.58'

Segment# 3: Line

Course: N89°20'02"E Length: 30.00'
North: 1,674,366.98' East: 3,180,639.58'

Segment# 4: Line

Course: S0°39'58"E Length: 91.00'
North: 1,674,275.99' East: 3,180,640.64'

Perimeter: 242.00' Area: 2,730Sq.Ft.
Error Closure: 0.00 Course: N0°00'00"E
Error North : 0.000 East: 0.000

Precision 1: 242,000,000.00

Parcel Name: REVISED JEWELL URBAN COTTAGES FIL NO 1|1 - 5
Description:

Process segment order counterclockwise: False
Enable mapcheck across chord: False
North:1,674,276.34' East:3,180,670.63'

Segment# 1: Line
Course: S89°20'02"W Length: 30.00'
North: 1,674,275.99' East: 3,180,640.64'

Segment# 2: Line
Course: N0°39'58"W Length: 91.00'
North: 1,674,366.98' East: 3,180,639.58'

Segment# 3: Line
Course: N89°20'02"E Length: 30.00'
North: 1,674,367.33' East: 3,180,669.58'

Segment# 4: Line
Course: S0°39'58"E Length: 91.00'
North: 1,674,276.34' East: 3,180,670.63'

Perimeter: 242.00' Area: 2,730Sq.Ft.
Error Closure: 0.00 Course: N0°00'00"E
Error North : 0.000 East: 0.000

Precision 1: 242,000,000.00

Parcel Name: REVISED JEWELL URBAN COTTAGES FIL NO 1|1 - 6
Description:

Process segment order counterclockwise: False
Enable mapcheck across chord: False
North:1,674,276.69' East:3,180,700.63'

Segment# 1: Line
Course: S89°20'02"W Length: 30.00'
North: 1,674,276.34' East: 3,180,670.63'

Segment# 2: Line
Course: N0°39'58"W Length: 91.00'
North: 1,674,367.33' East: 3,180,669.58'

Segment# 3: Line
Course: N89°20'02"E Length: 30.00'
North: 1,674,367.68' East: 3,180,699.57'

Segment# 4: Line
Course: S0°39'58"E Length: 91.00'
North: 1,674,276.69' East: 3,180,700.63'

Perimeter: 242.00' Area: 2,730Sq.Ft.
Error Closure: 0.00 Course: N0°00'00"E

Error North : 0.000 East: 0.000

Precision 1: 242,000,000.00

Parcel Name: REVISED JEWELL URBAN COTTAGES FIL NO 1|1 - 7

Description:

Process segment order counterclockwise: False

Enable mapcheck across chord: False

North:1,674,277.04' East:3,180,730.63'

Segment# 1: Line

Course: S89°20'02"W Length: 30.00'

North: 1,674,276.69' East: 3,180,700.63'

Segment# 2: Line

Course: N0°39'58"W Length: 91.00'

North: 1,674,367.68' East: 3,180,699.57'

Segment# 3: Line

Course: N89°20'02"E Length: 30.00'

North: 1,674,368.03' East: 3,180,729.57'

Segment# 4: Line

Course: S0°39'58"E Length: 91.00'

North: 1,674,277.04' East: 3,180,730.63'

Perimeter: 242.00' Area: 2,730Sq.Ft.

Error Closure: 0.00 Course: N0°00'00"E

Error North : 0.000 East: 0.000

Precision 1: 242,000,000.00

Parcel Name: REVISED JEWELL URBAN COTTAGES FIL NO 1|1 - 8

Description:

Process segment order counterclockwise: False

Enable mapcheck across chord: False

North:1,674,277.39' East:3,180,760.63'

Segment# 1: Line

Course: S89°20'02"W Length: 30.00'

North: 1,674,277.04' East: 3,180,730.63'

Segment# 2: Line

Course: N0°39'58"W Length: 91.00'

North: 1,674,368.03' East: 3,180,729.57'

Segment# 3: Line

Course: N89°20'02"E Length: 30.00'

North: 1,674,368.38' East: 3,180,759.57'

Segment# 4: Line
Course: S0°39'58"E Length: 91.00'
North: 1,674,277.39' East: 3,180,760.63'

Perimeter: 242.00' Area: 2,730Sq.Ft.
Error Closure: 0.00 Course: N0°00'00"E
Error North : 0.000 East: 0.000

Precision 1: 242,000,000.00

Parcel Name: REVISED JEWELL URBAN COTTAGES FIL NO 1|1 - 9
Description:

Process segment order counterclockwise: False
Enable mapcheck across chord: False
North:1,674,277.73' East:3,180,790.63'

Segment# 1: Line
Course: S89°20'02"W Length: 30.00'
North: 1,674,277.39' East: 3,180,760.63'

Segment# 2: Line
Course: N0°39'58"W Length: 91.00'
North: 1,674,368.38' East: 3,180,759.57'

Segment# 3: Line
Course: N89°20'02"E Length: 30.00'
North: 1,674,368.73' East: 3,180,789.57'

Segment# 4: Line
Course: S0°39'58"E Length: 91.00'
North: 1,674,277.73' East: 3,180,790.63'

Perimeter: 242.00' Area: 2,730Sq.Ft.
Error Closure: 0.00 Course: N0°00'00"E
Error North : 0.000 East: 0.000

Precision 1: 242,000,000.00

Parcel Name: REVISED JEWELL URBAN COTTAGES FIL NO 1|1 - TRACT A
Description:

Process segment order counterclockwise: False
Enable mapcheck across chord: False
North:1,674,363.31' East:3,180,323.64'

Segment# 1: Line
Course: N0°11'48"W Length: 10.00'
North: 1,674,373.31' East: 3,180,323.61'

Segment# 2: Line
Course: N89°20'02"E Length: 578.43'

North: 1,674,380.03' East: 3,180,902.00'

Segment# 3: Line

Course: S0°14'21"E Length: 10.00'
North: 1,674,370.03' East: 3,180,902.04'

Segment# 4: Line

Course: S89°20'02"W Length: 26.48'
North: 1,674,369.73' East: 3,180,875.56'

Segment# 5: Line

Course: S89°20'02"W Length: 39.00'
North: 1,674,369.27' East: 3,180,836.57'

Segment# 6: Line

Course: S89°20'02"W Length: 47.00'
North: 1,674,368.73' East: 3,180,789.57'

Segment# 7: Line

Course: S89°20'02"W Length: 30.00'
North: 1,674,368.38' East: 3,180,759.57'

Segment# 8: Line

Course: S89°20'02"W Length: 30.00'
North: 1,674,368.03' East: 3,180,729.57'

Segment# 9: Line

Course: S89°20'02"W Length: 30.00'
North: 1,674,367.68' East: 3,180,699.57'

Segment# 10: Line

Course: S89°20'02"W Length: 30.00'
North: 1,674,367.33' East: 3,180,669.58'

Segment# 11: Line

Course: S89°20'02"W Length: 30.00'
North: 1,674,366.98' East: 3,180,639.58'

Segment# 12: Line

Course: S89°20'02"W Length: 30.00'
North: 1,674,366.63' East: 3,180,609.58'

Segment# 13: Line

Course: S89°20'02"W Length: 30.00'
North: 1,674,366.29' East: 3,180,579.58'

Segment# 14: Line

Course: S89°20'02"W Length: 30.00'
North: 1,674,365.94' East: 3,180,549.58'

Segment# 15: Line
Course: S89°20'02"W Length: 30.00'
North: 1,674,365.59' East: 3,180,519.59'

Segment# 16: Line
Course: S89°20'02"W Length: 137.50'
North: 1,674,363.99' East: 3,180,382.10'

Segment# 17: Line
Course: S89°20'02"W Length: 39.00'
North: 1,674,363.54' East: 3,180,343.10'

Segment# 18: Line
Course: S89°20'02"W Length: 19.46'
North: 1,674,363.31' East: 3,180,323.64'

Perimeter: 1,176.87' Area: 5,784Sq.Ft.
Error Closure: 0.00 Course: S88°02'49"W
Error North : 0.000 East: -0.003

Precision 1: 1,176,870,000.00

Parcel Name: REVISED JEWELL URBAN COTTAGES FIL NO 1|1 - TRACT B
Description:

Process segment order counterclockwise: False
Enable mapcheck across chord: False
North:1,674,273.00' East:3,180,383.16'

Segment# 1: Line
Course: N0°39'58"W Length: 91.00'
North: 1,674,363.99' East: 3,180,382.10'

Segment# 2: Line
Course: N89°20'02"E Length: 137.50'
North: 1,674,365.59' East: 3,180,519.59'

Segment# 3: Line
Course: S0°39'58"E Length: 91.00'
North: 1,674,274.59' East: 3,180,520.65'

Segment# 4: Line
Course: S89°20'02"W Length: 30.00'
North: 1,674,274.25' East: 3,180,490.65'

Segment# 5: Line
Course: S89°20'02"W Length: 30.00'
North: 1,674,273.90' East: 3,180,460.65'

Segment# 6: Line
Course: S89°20'02"W Length: 30.00'

North: 1,674,273.55' East: 3,180,430.65'

Segment# 7: Line

Course: S89°20'02"W Length: 47.50'
North: 1,674,273.00' East: 3,180,383.16'

Perimeter: 456.99' Area: 12,512Sq.Ft.
Error Closure: 0.00 Course: N63°26'06"W
Error North : 0.000 East: 0.000

Precision 1: 457,000,000.00

Parcel Name: REVISED JEWELL URBAN COTTAGES FIL NO 1|1 - TRACT C
Description:

Process segment order counterclockwise: False
Enable mapcheck across chord: False
North:1,674,086.16' East:3,180,784.98'

Segment# 1: Line

Course: N89°20'02"E Length: 93.00'
North: 1,674,087.24' East: 3,180,877.98'

Segment# 2: Line

Course: N0°39'58"W Length: 30.00'
North: 1,674,117.23' East: 3,180,877.63'

Segment# 3: Line

Course: N0°39'58"W Length: 48.17'
North: 1,674,165.40' East: 3,180,877.07'

Segment# 4: Curve

Length: 5.92' Radius: 20.00'
Delta: 16°56'50" Tangent: 2.98'
Chord: 5.89' Course: N7°48'27"E
Course In: N73°43'08"W Course Out: N89°20'02"E
RP North: 1,674,171.01' East: 3,180,857.87'
End North: 1,674,171.24' East: 3,180,877.87'

Segment# 5: Line

Course: N0°39'58"W Length: 198.50'
North: 1,674,369.73' East: 3,180,875.56'

Segment# 6: Line

Course: N89°20'02"E Length: 26.48'
North: 1,674,370.04' East: 3,180,902.04'

Segment# 7: Line

Course: S0°14'21"E Length: 290.88'
North: 1,674,079.16' East: 3,180,903.26'

Segment# 8: Line
Course: S89°21'07"W Length: 578.65'
North: 1,674,072.61' East: 3,180,324.64'

Segment# 9: Line
Course: N0°11'48"W Length: 290.70'
North: 1,674,363.31' East: 3,180,323.64'

Segment# 10: Line
Course: N89°20'02"E Length: 19.46'
North: 1,674,363.54' East: 3,180,343.10'

Segment# 11: Line
Course: S0°39'58"E Length: 198.50'
North: 1,674,165.05' East: 3,180,345.41'

Segment# 12: Curve
Length: 31.42' Radius: 20.00'
Delta: 90°00'00" Tangent: 20.00'
Chord: 28.28' Course: S45°39'58"E
Course In: N89°20'02"E Course Out: S0°39'58"E
RP North: 1,674,165.28' East: 3,180,365.41'
End North: 1,674,145.28' East: 3,180,365.64'

Segment# 13: Line
Course: N89°20'02"E Length: 114.63'
North: 1,674,146.62' East: 3,180,480.26'

Segment# 14: Line
Course: S0°39'58"E Length: 29.00'
North: 1,674,117.62' East: 3,180,480.60'

Segment# 15: Line
Course: S0°39'58"E Length: 29.00'
North: 1,674,088.62' East: 3,180,480.94'

Segment# 16: Line
Course: N89°20'02"E Length: 103.00'
North: 1,674,089.82' East: 3,180,583.93'

Segment# 17: Line
Course: S0°39'58"E Length: 6.00'
North: 1,674,083.82' East: 3,180,584.00'

Segment# 18: Line
Course: N89°20'02"E Length: 93.00'
North: 1,674,084.90' East: 3,180,676.99'

Segment# 19: Line
Course: N0°39'58"W Length: 30.00'

North: 1,674,114.90' East: 3,180,676.65'

Segment# 20: Line

Course: N0°39'58"W Length: 34.00'
North: 1,674,148.90' East: 3,180,676.25'

Segment# 21: Line

Course: N89°20'02"E Length: 15.00'
North: 1,674,149.07' East: 3,180,691.25'

Segment# 22: Line

Course: S0°39'58"E Length: 34.00'
North: 1,674,115.07' East: 3,180,691.65'

Segment# 23: Line

Course: S0°39'58"E Length: 30.00'
North: 1,674,085.07' East: 3,180,691.99'

Segment# 24: Line

Course: N89°20'02"E Length: 93.00'
North: 1,674,086.16' East: 3,180,784.99'

Perimeter: 2,422.30'

Area: 28,147Sq.Ft.

Error Closure: 0.00

Course: N79°42'40"E

Error North : 0.001

East: 0.003

Precision 1: 2,422,310,000.00

Parcel Name: REVISED JEWELL URBAN COTTAGES FIL NO 1|1 - TRACT D

Description:

Process segment order counterclockwise: False

Enable mapcheck across chord: False

North:1,674,151.01' East:3,180,858.10'

Segment# 1: Line

Course: S89°20'02"W Length: 73.87'
North: 1,674,150.15' East: 3,180,784.24'

Segment# 2: Line

Course: S89°20'02"W Length: 93.00'
North: 1,674,149.07' East: 3,180,691.25'

Segment# 3: Line

Course: S89°20'02"W Length: 15.00'
North: 1,674,148.90' East: 3,180,676.25'

Segment# 4: Line

Course: S89°20'02"W Length: 93.00'
North: 1,674,147.81' East: 3,180,583.25'

Segment# 5: Line
Course: S89°20'02"W Length: 103.00'
North: 1,674,146.62' East: 3,180,480.26'

Segment# 6: Line
Course: S89°20'02"W Length: 114.63'
North: 1,674,145.28' East: 3,180,365.64'

Segment# 7: Curve
Length: 31.42' Radius: 20.00'
Delta: 90°00'00" Tangent: 20.00'
Chord: 28.28' Course: N45°39'58"W
Course In: N0°39'58"W Course Out: S89°20'02"W
RP North: 1,674,165.28' East: 3,180,365.40'
End North: 1,674,165.05' East: 3,180,345.41'

Segment# 8: Line
Course: N0°39'58"W Length: 198.50'
North: 1,674,363.54' East: 3,180,343.10'

Segment# 9: Line
Course: N89°20'02"E Length: 39.00'
North: 1,674,363.99' East: 3,180,382.10'

Segment# 10: Line
Course: S0°39'58"E Length: 91.00'
North: 1,674,273.00' East: 3,180,383.15'

Segment# 11: Line
Course: S0°39'58"E Length: 73.50'
North: 1,674,199.50' East: 3,180,384.01'

Segment# 12: Curve
Length: 18.90' Radius: 28.00'
Delta: 38°40'56" Tangent: 9.83'
Chord: 18.55' Course: S20°00'26"E
Course In: N89°20'02"E Course Out: S50°39'06"W
RP North: 1,674,199.83' East: 3,180,412.01'
End North: 1,674,182.07' East: 3,180,390.35'

Segment# 13: Line
Course: N89°20'02"E Length: 41.35'
North: 1,674,182.56' East: 3,180,431.70'

Segment# 14: Line
Course: N89°20'02"E Length: 30.00'
North: 1,674,182.90' East: 3,180,461.70'

Segment# 15: Line
Course: N89°20'02"E Length: 30.00'

North: 1,674,183.25' East: 3,180,491.70'

Segment# 16: Line
Course: N89°20'02"E Length: 30.00'
North: 1,674,183.60' East: 3,180,521.70'

Segment# 17: Line
Course: N89°20'02"E Length: 30.00'
North: 1,674,183.95' East: 3,180,551.69'

Segment# 18: Line
Course: N89°20'02"E Length: 30.00'
North: 1,674,184.30' East: 3,180,581.69'

Segment# 19: Line
Course: N89°20'02"E Length: 30.00'
North: 1,674,184.65' East: 3,180,611.69'

Segment# 20: Line
Course: N89°20'02"E Length: 30.00'
North: 1,674,185.00' East: 3,180,641.69'

Segment# 21: Line
Course: N89°20'02"E Length: 30.00'
North: 1,674,185.35' East: 3,180,671.68'

Segment# 22: Line
Course: N89°20'02"E Length: 30.00'
North: 1,674,185.69' East: 3,180,701.68'

Segment# 23: Line
Course: N89°20'02"E Length: 30.00'
North: 1,674,186.04' East: 3,180,731.68'

Segment# 24: Line
Course: N89°20'02"E Length: 30.00'
North: 1,674,186.39' East: 3,180,761.68'

Segment# 25: Line
Course: N89°20'02"E Length: 30.00'
North: 1,674,186.74' East: 3,180,791.68'

Segment# 26: Line
Course: N89°20'02"E Length: 40.86'
North: 1,674,187.22' East: 3,180,832.53'

Segment# 27: Curve
Length: 18.90' Radius: 28.00'
Delta: 38°40'58" Tangent: 9.83'
Chord: 18.55' Course: N18°40'29"E

Course In: N51°59'01"W Course Out: N89°20'00"E
RP North: 1,674,204.46' East: 3,180,810.47'
End North: 1,674,204.79' East: 3,180,838.47'

Segment# 28: Line
Course: N0°39'58"W Length: 73.50'
North: 1,674,278.28' East: 3,180,837.62'

Segment# 29: Line
Course: N0°39'58"W Length: 91.00'
North: 1,674,369.27' East: 3,180,836.56'

Segment# 30: Line
Course: N89°20'02"E Length: 39.00'
North: 1,674,369.73' East: 3,180,875.56'

Segment# 31: Line
Course: S0°39'58"E Length: 198.50'
North: 1,674,171.24' East: 3,180,877.87'

Segment# 32: Curve
Length: 5.92' Radius: 20.00'
Delta: 16°56'50" Tangent: 2.98'
Chord: 5.89' Course: S7°48'27"W
Course In: S89°20'02"W Course Out: S73°43'08"E
RP North: 1,674,171.01' East: 3,180,857.87'
End North: 1,674,165.40' East: 3,180,877.06'

Segment# 33: Line
Course: N0°39'59"W Length: 0.00'
North: 1,674,165.40' East: 3,180,877.06'

Segment# 34: Line
Course: S0°39'59"E Length: 0.00'
North: 1,674,165.40' East: 3,180,877.06'

Segment# 35: Curve
Length: 25.50' Radius: 20.00'
Delta: 73°03'10" Tangent: 14.81'
Chord: 23.81' Course: S52°48'27"W
Course In: N73°43'08"W Course Out: S0°39'58"E
RP North: 1,674,171.01' East: 3,180,857.87'
End North: 1,674,151.01' East: 3,180,858.10'

Perimeter: 1,839.35' Area: 33,529Sq.Ft.
Error Closure: 0.00 Course: N86°14'35"W
Error North : 0.000 East: -0.005

Precision 1: 1,839,350,000.00

COLORADO LAND SURVEY MONUMENT RECORD

Department of Regulatory Agencies
Board of Registration for Professional Engineers and Professional Land Surveyors
1560 Broadway, Suite 1350, Denver, CO 80202
Phone (303) 894-7788 • Fax (303) 894-7790 • TDD (303) 894-2900

RECEIVED
NOV 07 2008
COLO. ST. BD. OF LIC. FOR A.E.S.

REPORT ONE MONUMENT ONLY ON THIS FORM — REPRODUCTION OF THIS FORM IS AUTHORIZED BY THE BOARD OF REGISTRATION FOR PROFESSIONAL ENGINEERS AND PROFESSIONAL LAND SURVEYORS. All items to be filled in by the Land Surveyor using **PERMANENT BLACK LETTERING** and lines which can be reproduced.

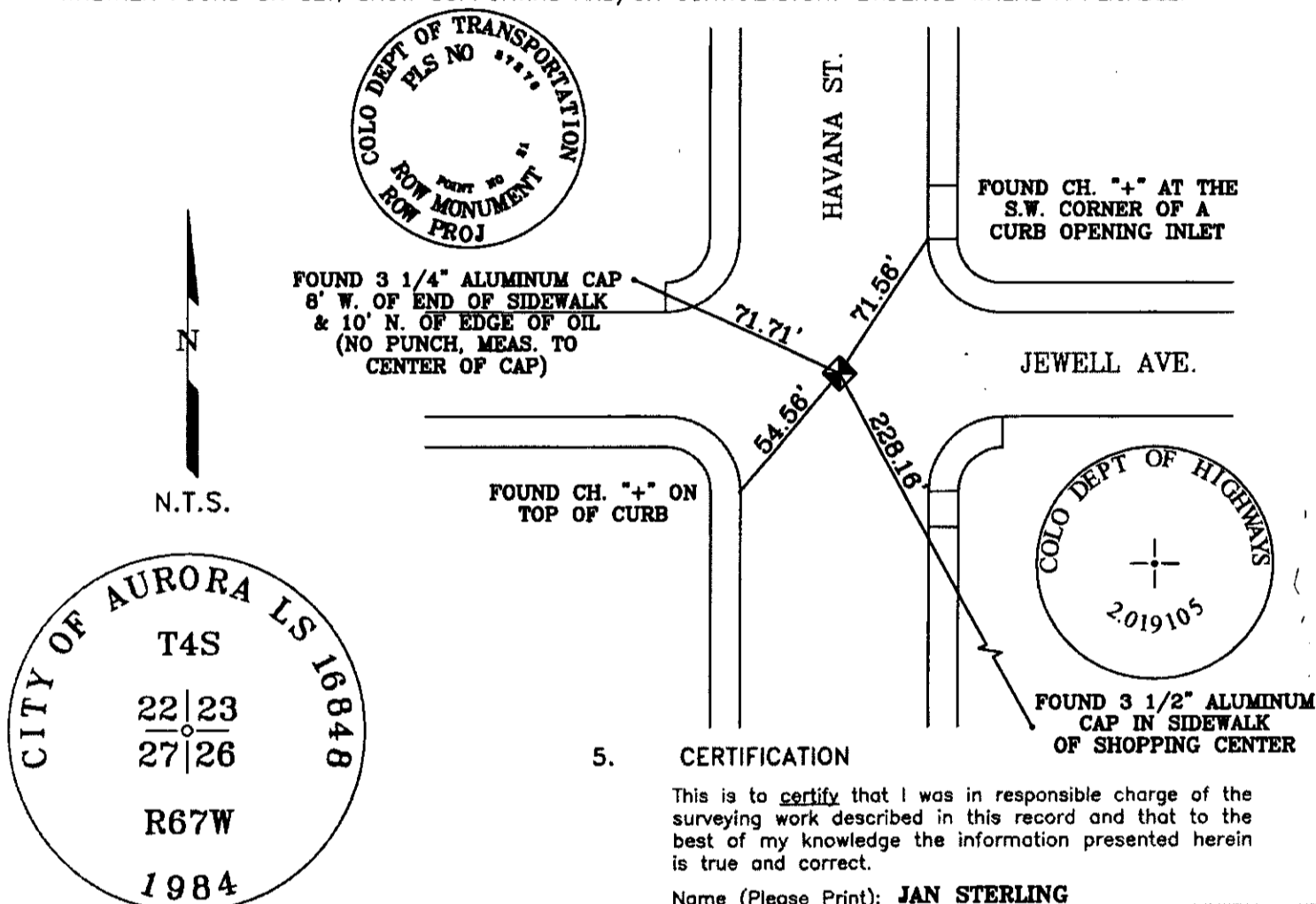
1. TYPE OF MONUMENT: ☒ SECTION CORNER ☐ QUARTER CORNER ☐ BENCH MARK ☐ OTHER

2. DESCRIPTION OF MONUMENT FOUND:

**FOUND 3" BRASS CAP 0.8' DOWN IN A RANGE BOX & STAMPED AS SHOWN.
(RANGE BOX IS FLUSH WITH ASPHALT SURFACE OF ROAD)**

3. DESCRIPTION OF MONUMENT ESTABLISHED BY YOU TO PERPETUATE THE LOCATION OF THIS POINT:

4. SKETCH SHOWING RELATIVE LOCATION OF MONUMENT, ACCESSORIES AND REFERENCE POINTS STATING WHETHER FOUND OR SET, SHOW SUPPORTING AND/OR CONTRADICTORY EVIDENCE WHERE APPLICABLE:



5. CERTIFICATION

This is to certify that I was in responsible charge of the surveying work described in this record and that to the best of my knowledge the information presented herein is true and correct.

Name (Please Print): **JAN STERLING**

Firm Name: **CITY OF AURORA**

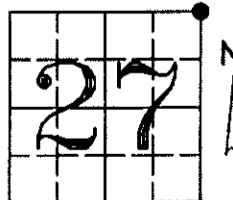
Firm Address: **13645 E. ELLSWORTH AVE.**

AURORA, COLORADO 80012

Phone: **303-326-8015**

6. LOCATION DIAGRAM

1" = 1 Mile



● = Location of Monument Signature/Date through Seal

7. SEC **27** T **4S** R **67W** **6TH** P.M.
COUNTY **ARAPAHOE** INDEX REF NUMBER **17-J**

**8. SEC _____ T _____ R _____ P.M.
COUNTY _____ INDEX REF NUMBER _____

** To be used only for monuments located on county lines

Rev.02/00

a. Date of field Work to Establish, Restore or Rehabilitate Monument: **OCT. 28, 2008**

b. Date Monument was used as Control: _____

(Do not fill in)

ACCEPTED

JAN 12 2009

COLO. ST. BD. OF LIC. FOR A.E.S.

RECEIVED AT OFFICE OF THE COUNTY CLERK _____ COUNTY

BY: _____

DATE: _____

Record to be filed by Index Reference Number Numerically, then Alphabetically, under appropriate Township, Range, and Meridian.

COLORADO LAND SURVEY MONUMENT RECORD

Department of Regulatory Agencies
Board of Registration for Professional Engineers and Professional Land Surveyors
1560 Broadway, Suite 1350, Denver, CO 80202
Phone (303) 894-7788 • Fax (303) 894-7790 • TDD (303) 894-2900X23

RECEIVED
JUL 13 2009
COLO. ST. BD. OF LIC.
FOR AES

REPORT ONE MONUMENT ONLY ON THIS FORM — REPRODUCTION OF THIS FORM IS A CRIMINAL VIOLATION OF COLO. ST. BD. OF LIC. FOR AES
All forms to be filled in by the Land Surveyor using **PERMANENT BLACK LETTERING** and lines which can be reproduced

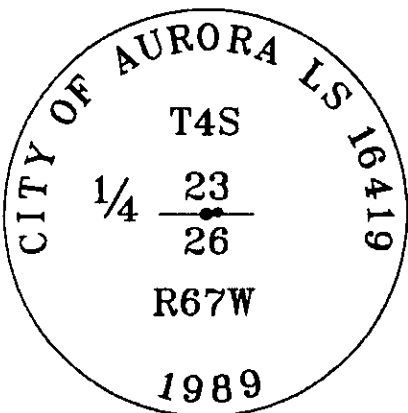
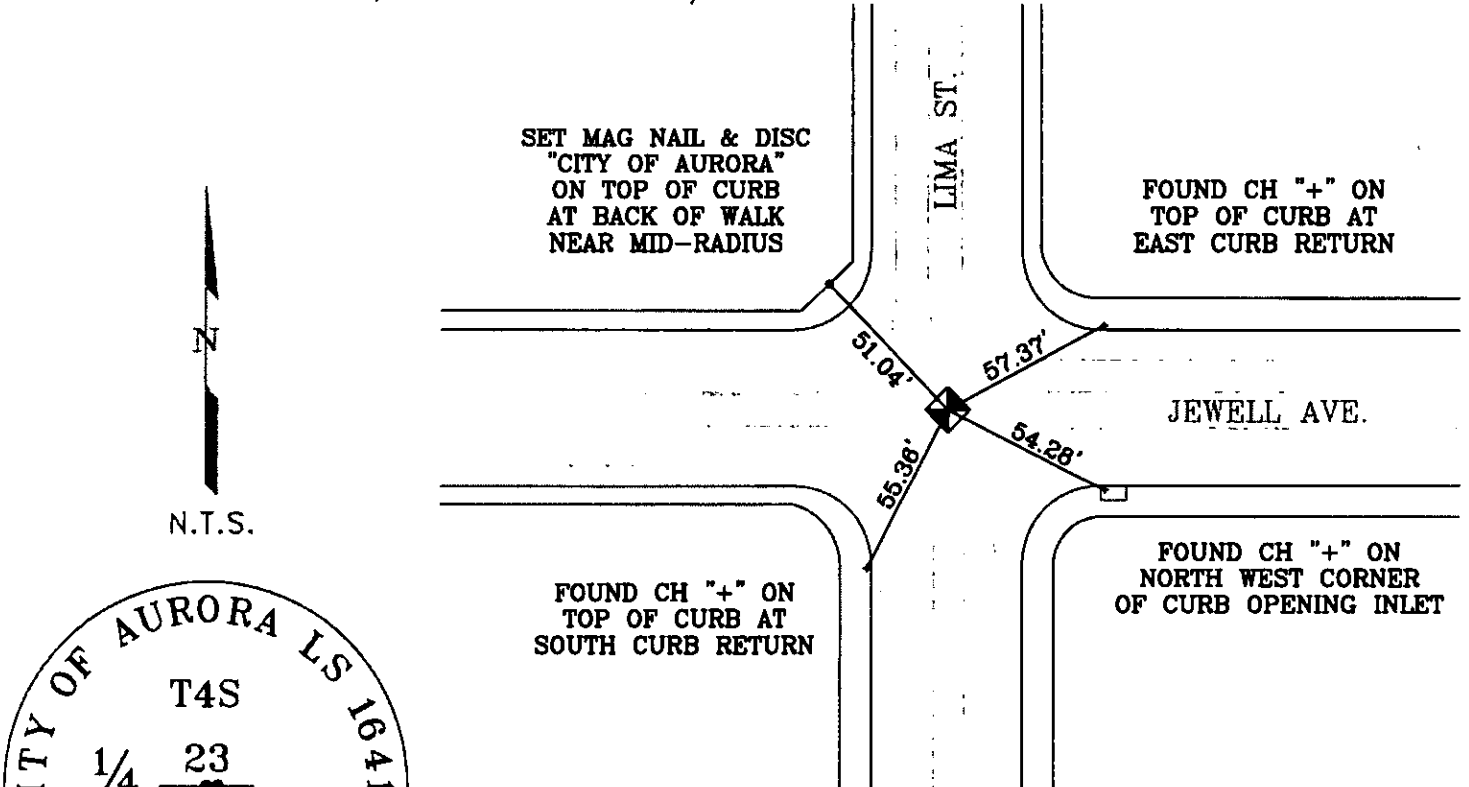
1. TYPE OF MONUMENT: ☐ SECTION CORNER ☒ QUARTER CORNER ☐ BENCH MARK ☐ OTHER _____

2. DESCRIPTION OF MONUMENT FOUND:

FOUND 3" BRASS CAP 0.7' BELOW THE ASPHALT SURFACE WITH TWO APPARENT PUNCH MARKS. THE WESTERLY PUNCH MARK WAS USED AS IT IS CENTERED ON THE CAP. UPGRADED OLDER STYLE AURORA RANGE BOX WITH A NEW ONE.

3. DESCRIPTION OF MONUMENT ESTABLISHED BY YOU TO PERPETUATE THE LOCATION OF THIS POINT:

4. SKETCH SHOWING RELATIVE LOCATION OF MONUMENT, ACCESSORIES AND REFERENCE POINTS STATING WHETHER FOUND OR SET, SHOW SUPPORTING AND/OR CONTRADICTORY EVIDENCE WHERE APPLICABLE:



Stamping on Cap

5. CERTIFICATION

This is to certify that I was in responsible charge of the surveying work described in this record and that to the best of my knowledge the information presented herein is true and correct.

Name (Please Print): **JAN STERLING**

Firm Name: **CITY OF AURORA**

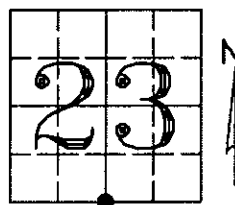
Firm Address: **13645 E. ELLSWORTH AVE.**

AURORA, COLORADO 80012

Phone: **303-326-8015**

6. LOCATION DIAGRAM

1" = 1 Mile



● = Location of Monument Signature/Date through Seal

7. SEC **23** T **4S** R **67W** **6TH** P.M.
COUNTY **ARAPAHOE** INDEX REF NUMBER **19-J**

**8. SEC _____ T _____ R _____ P.M.
COUNTY _____ INDEX REF NUMBER _____

** To be used only for monuments located on county lines

Rev.02/00

a. Date of field work to Establish, Restore or Rehabilitate Monument: **JUNE 24, 2009**

b. Date Monument was used as Control: _____

(Do not fill in)

ACCEPTED
AUG 29 2009
COLO. ST. BD. OF LIC.
FOR AES

RECEIVED AT OFFICE OF THE COUNTY CLERK
_____ COUNTY

BY: _____
DATE: _____

Record to be filed by Index Reference Number
Numerically, then Alphabetically, under
appropriate Township, Range, and Meridian.