



Sustainable Traffic Solutions

Joseph L. Henderson PE, PTOE
Traffic Engineer / Principal

December 5, 2023

Arend K. Accola
Principal/Managing Broker
Altos Realty Advisors, Inc.
5777 E Evans Ave., Suite 1
Denver, CO 80222

RE: Trip Generation Estimate for the Highline Village Apartments in Aurora

Dear Arend,

Based on your request, I have prepared this trip generation letter to document the trip generation for the Highline Village Apartments project that is located north of Colfax Avenue between Jasper Street and Laredo Street. Access to the site will be from 16th Avenue and 17th Avenue. 130 apartments are planned for the project. Figure 1 contains the vicinity map and Figure 2 contains the site plan showing the site access.

A trip generation estimate was prepared for the project using rates that are contained in the Institute of Transportation Engineers Trip Generation¹ manual. Table 1 contains the trip generation estimate that shows that the apartments are expected to generate 876 trips on an average weekday, 52 trips during the morning peak hour, and 66 trips during the evening peak hour. The development will not exceed the 75 trip threshold during either peak hour, so a traffic study will not be required.

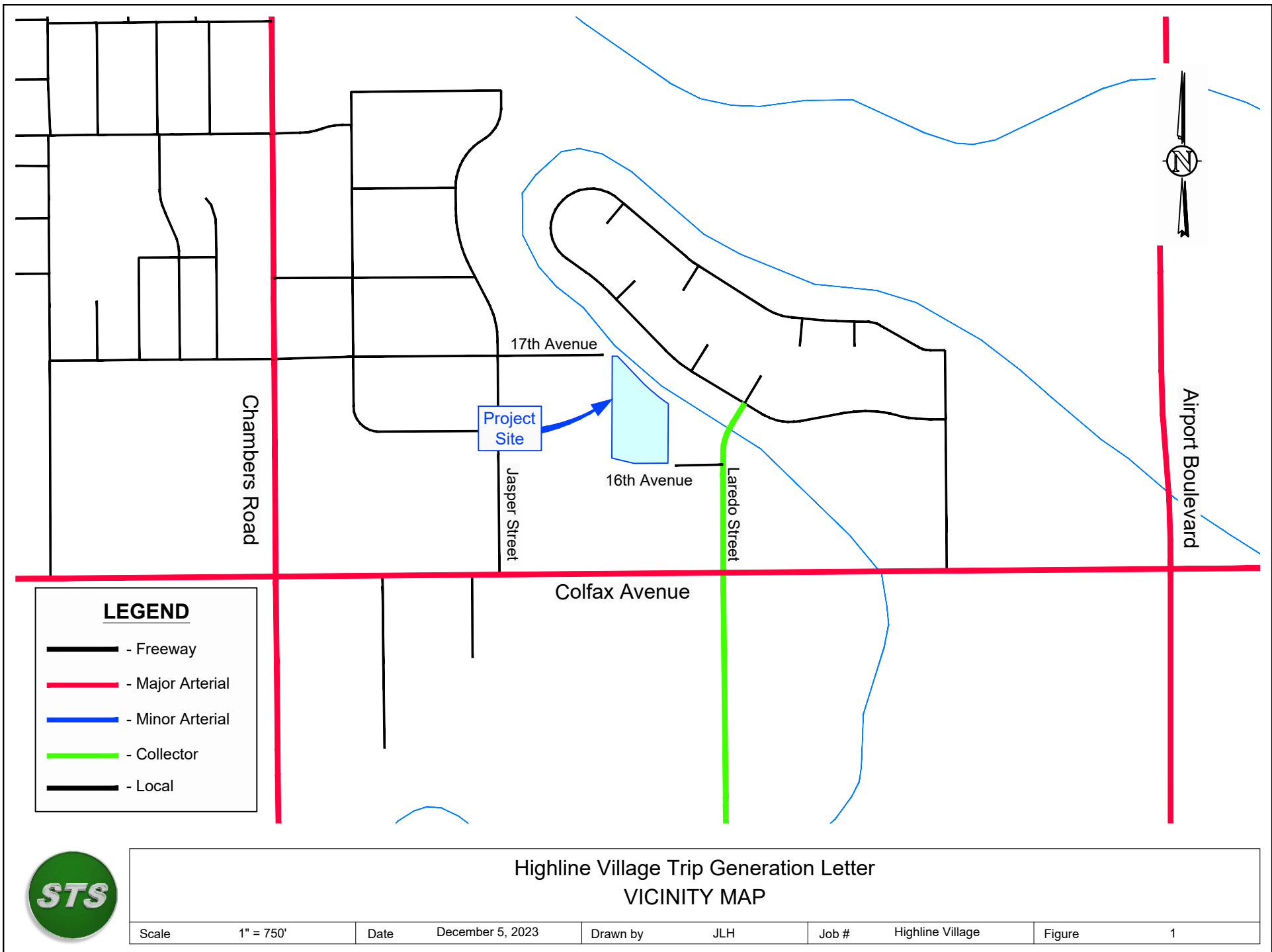
Feel free to contact me to discuss the contents of this report.

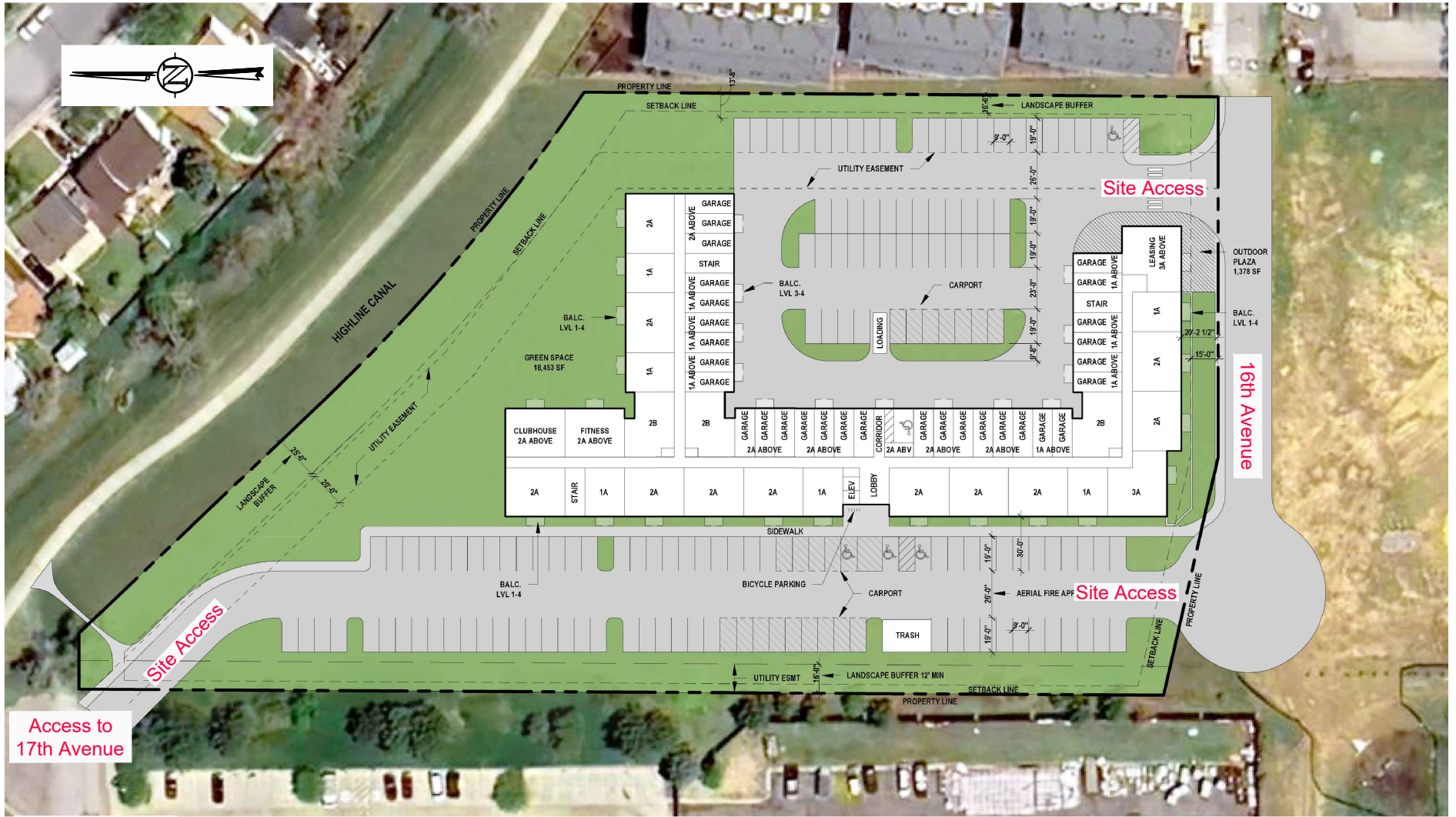
Sincerely,

Joseph L. Henderson, PE, PTOE
Project Manager / Principal
Highline Village Trip Gen Letter



¹ Trip Generation, 11th Edition. Institute of Transportation Engineers. 2021.





Highline Village Trip Generation Letter SITE PLAN

Scale	NTS	Date	December 5, 2023	Drawn by	JLH	Job #	Highline Village	Figure	2
-------	-----	------	------------------	----------	-----	-------	------------------	--------	---

Table 1. Trip Generation Estimate

Land Use	ITE Code ¹	Size	Unit	Average Daily Trips				Morning Peak Hour Trips				Evening Peak Hour Trips			
				Rate	Total	In	Out	Rate	Total	In	Out	Rate	Total	In	Out
Multifamily Housing (Low-Rise)	220	130	Dwelling Units	6.74	876	438	438	0.4	52	12	40	0.51	66	42	25

Notes:

1. The trip generation estimate is based on rates contained in [Trip Generation, 11th Edition](#) (Institute of Transportation Engineers, September 2021).