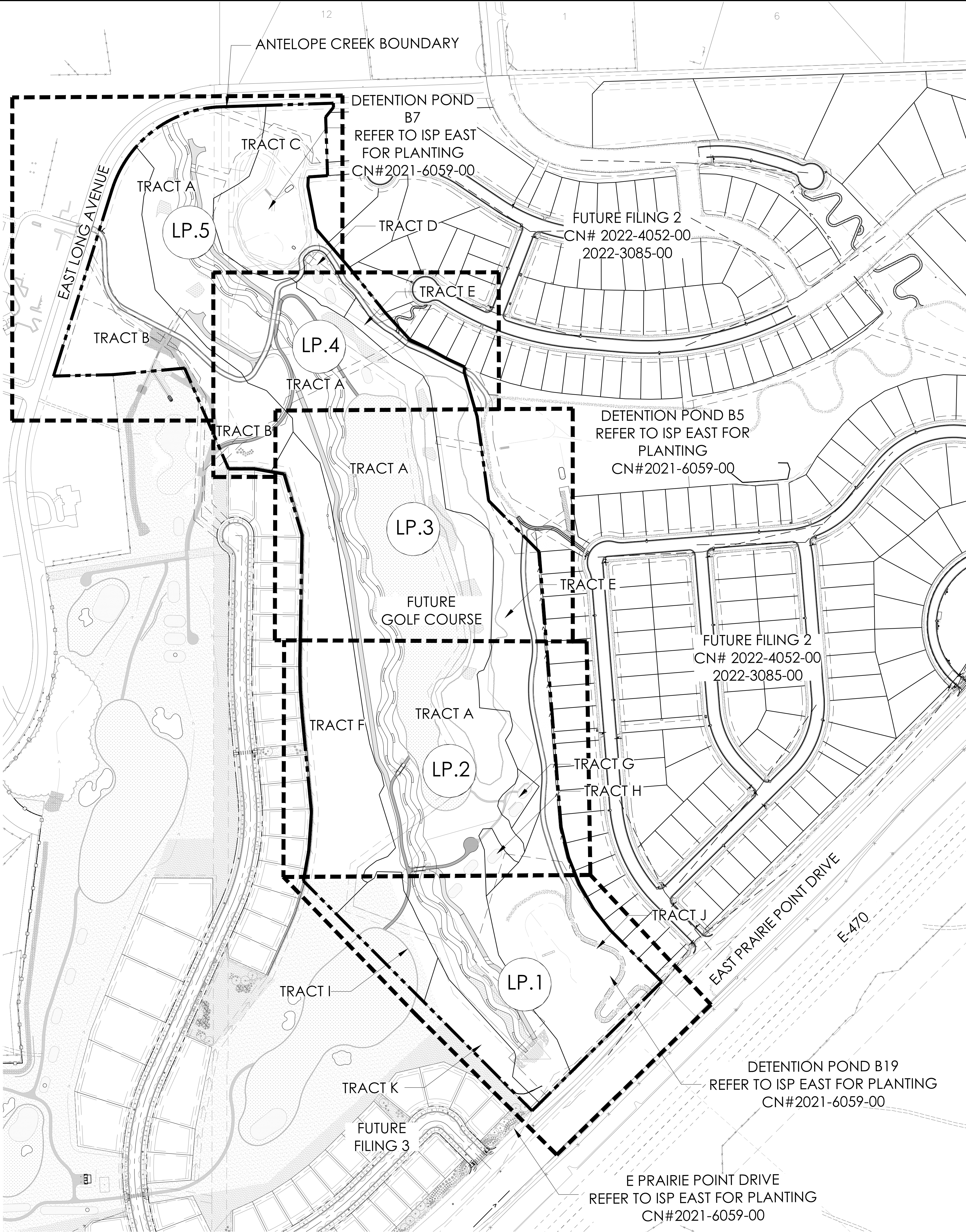


8/29/2024 9:47 AM P:\CAKWOOD MASTER FOLDER\KINGS POINT\ISP ANTELOPE CREEK\CAO\SUBMITTALS\LANDSCAPE PLANS.DWG 1 COVER

SHEET INDEX

SHEET #	SHEET NAME
15	LS.1
16	LN.1
17-21	LP.1-LP.5
22	LD.1
23	LH.1
24	OS.1

LANDSCAPE ARCHITECT
TERRACINA DESIGN
10200 E. GIRARD AVE, SUITE A-314
DENVER, CO 80231
(303) 632-8867
CONTACT: SARAH MOLL

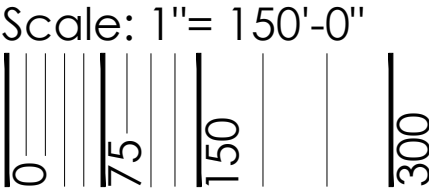
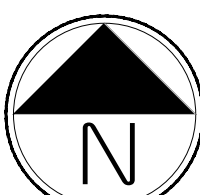


LEGEND

LP.X SHEET NUMBER

--- MATCHLINE

--- ANTELOPE CREEK BOUNDARY



NOT FOR CONSTRUCTION

terracina
design
10200 E. Girard Ave, Ste A-314
Denver, CO 80231
PH: 303.632.8867

PROJECT NAME

ANTELOPE CREEK (KINGS POINT NORTH)
AURORA, COLORADO
INFRASTRUCTURE SITE PLAN

SHEET TITLE

OVERALL
LANDSCAPE
PLAN

SHEET NUMBER

LS.1

SHEET 15

August 29, 2024

9/3/2024 8:59 AM P:\OAKWOOD MASTER FOLDER\KINGS POINT\SP ANTELOPE CREEK\CAD\SUBMITTALS\SHEETS LANDSCAPE PLANS.DWG 2 NOTES

PLANT SCHEDULE

QTY	KEY	BOTANICAL NAME	COMMON NAME	SIZE	TYPE
DECIDUOUS SHADE TREES					
4	CS	CATALPA SPECIOSA	CATALPA, WESTERN	2.5" CAL	B&B
3	CO	CELTIS OCCIDENTALIS	HACKBERRY, WESTERN	2.5" CAL	B&B
2	GD	GYMNOCLADUS DIOICUS 'ESPRESSO'	KENTUCKY COFFEETREE, SEEDLESS	2.5" CAL	B&B
3	GTI	GLEDITSIA TRIACANTHOS 'INERMIS 'IMPERIAL'	HONEYLOCUST, IMPERIAL	2.5" CAL	B&B
10	GTS	GLEDITSIA TRIACANTHOS 'INERMIS 'SKYLINE'	HONEYLOCUST, SKYLINE	2.5" CAL	B&B
7	QB	QUERCUS BICOLOR	OAK, SWAMP WHITE	2.5" CAL	B&B
6	QM	QUERCUS MACROCARPA	OAK, BUR	2.5" CAL	B&B
9	QL	QUERCUS LACEYI	OAK, TEXAS RED	2.5" CAL	B&B
5	QS	QUERCUS 'SHUMMARDI'	OAK, SCHUMMARD	2.5" CAL	B&B
8	SJP	SOPHORA JAPONICA	JAPANESE PAGODA TREE	2.5" CAL	B&B
ORNAMENTAL TREES					
2	ACS	AMELANCHIER CANADENSIS	SERVICEBERRY, SHADBLOW	6-8' MULTI	B&B
6	ATH	ACER TATARICUM 'HOT WINGS'	MAPLE, HOT WINGS	6-8' MULTI	B&B
3	ATP	ACER TATARICUM 'PATTERN PERFECT'	MAPLE, PATTERN PERFECT	6-8' MULTI	B&B
4	KP	KOELREUTERIA PANICULATA	GOLDENRAIN TREE	2" CAL	B&B
2	MPF	MALUS 'PRAIRIE FIRE'	CRABAPPLE, PRAIRIE FIRE	6-8' MULTI	B&B
3	PNK	PRUNUS NIGRA 'PRINCESS KAY'	PRINCESS KAY PLUM	6-8' MULTI	B&B
EVERGREEN TREES					
20	PE	PINUS EDULIS	PINE, PINON	6' HT.	B&B
4	PH	PINUS HELDREICHII (LEUCODERMIS)	PINE, BOSNIAN	6' HT.	B&B
10	PN	PINUS NIGRA	PINE, AUSTRIAN	6' HT.	B&B
14	PP	PINUS PONDEROSA	PINE, PONDEROSA	6' HT.	B&B
DECIDUOUS SHRUBS					
53	AAB	ARONIA ARBUTIFOLIA 'BRILLIANTISSIMA'	CHOKEBERRY, BRILLIANT RED	#5	CONT.
150	ACL	AMORPHA CANESCENS	LEADPLANT	#5	CONT.
45	AMA	ARONIA MELANOCARPA 'AUTUMN MAGIC'	CHOKEBERRY, AUTUMN MAGIC BLACK	#5	CONT.
74	AFS	ARTEMISIA FILIFOLIA	SAGEBRUSH, SAND	#5	CONT.
13	CMG	CHAMAEBATARIA MILLEFOLIUM	FERNBUSH	#5	CONT.
54	ENG	ERICAMERIA NAUSEOSA SSP. NAUSEOSA VAR. GLABRATA	RABBITBRUSH, TALL GREEN	#5	CONT.
18	ENN	ERICAMERIA NAUSEOSA SSP. NAUSEOSA VAR. NAUSEOSA	RABBITBRUSH, DWARF BLUE	#5	CONT.
72	FPA	FALLUGIA PARADOXA	APACHE PLUME	#5	CONT.
78	FPP	FORESTIERA PUBESCENS VAR. PUBESCENS	PRIVET, NEW MEXICO	#5	CONT.
44	PAR	PEROVSKIA ATRIPLICIFOLIA	SAGE, RUSSIAN	#5	CONT.
*WATER USE TABLE BASED OFF OF CSU FRONT RANGE TREE RECOMMENDATION LIST & CITY OF AURORA XERISCAPE AND NO-WATER PLANT LIST. WATER USE SYMBOLS REPRESENT THE FOLLOWING WATER NEEDS: L=LOW, M=MEDIUM, H=HIGH					

LANDSCAPE NOTES

- THE DEVELOPER, HIS SUCCESSORS AND ASSIGNS, SHALL BE RESPONSIBLE FOR INSTALLATION, MAINTENANCE AND REPLACEMENT FOR ALL LANDSCAPING MATERIALS SHOWN OR INDICATED ON THE APPROVED SITE PLAN OR LANDSCAPE PLAN ON FILE IN THE PLANNING DEPARTMENT. ALL LANDSCAPING WILL BE INSTALLED UPON CONSTRUCTION OF THE DRAINAGE CORRIDOR.
- ALL LANDSCAPE AREAS AND PLANT MATERIALS, EXCEPT FOR NON-IRRIGATED NATIVE, RESTORATIVE, AND DRYLAND GRASS AREAS THAT COMPLY WITH REQUIREMENTS FOUND IN SEC. 146-4.7.3.C MUST BE WATERED BY AN AUTOMATIC UNDERGROUND IRRIGATION SYSTEM. IRRIGATION SYSTEM DESIGN, INSTALLATION, OPERATION, AND MAINTENANCE SHALL CONFORM TO REQUIREMENTS FOUND IN THE CITY OF AURORA IRRIGATION ORDINANCE.
- ALL UTILITY EASEMENTS SHALL REMAIN UNOBSTRUCTED AND FULLY ACCESSIBLE ALONG THEIR ENTIRE LENGTH FOR THE MAINTENANCE EQUIPMENT ENTRY.
- ALL LANDSCAPED AREAS SHALL RECEIVE SOIL PREPARATION. SODDED AREAS AND LANDSCAPE BEDS SHALL RECEIVE 4 CUBIC YARDS OF COMPOST PER 1,000 S.F. MINIMUM. SEEDED AREAS SHALL RECEIVE 2 CUBIC YARDS OF COMPOST PER 1,000 S.F. MINIMUM. COMPOST SHALL BE CLASS 1.
- TREES PLANTED IN SEED AND SOD AREAS SHALL CONTAIN DOUBLE SHREDDED LONG CEDAR MULCH.
- ALL ADA ACCESSIBLE WALKS SHALL BE STANDARD GRAY CONCRETE W/ MEDIUM BROOM FINISH. A FEW MINOR NON ADA TRAILS SHALL BE CRUSHER FINES. PEDESTRIAN NODES SHALL BE STANDARD GRAY CONCRETE W/MEDIUM BROOM FINISH.
- LANDSCAPE MATERIAL SHALL NOT BE PLACED OR KEPT NEAR FIRE HYDRANTS IN A MANNER THAT WOULD PREVENT SUCH EQUIPMENT FROM BEING IMMEDIATELY DISCERNIBLE. A 5-FOOT CLEAR SPACE SHALL BE MAINTAINED AROUND THE CIRCUMFERENCE OF FIRE HYDRANTS. LANDSCAPING MATERIAL SHOWN WITHIN THE SITE PLAN CANNOT ENCROACH INTO ROADWAYS THAT ARE DEDICATED (OR DESIGNATED) AS FIRE LANE EASEMENTS (OR CORRIDORS).
- ALL PROPOSED LANDSCAPING WITHIN THE SIGHT TRIANGLE SHALL BE IN COMPLIANCE WITH COA ROADWAY SPECIFICATIONS. SECTION 4.04.2.10 AND UDO SECTION 146.4.7.5. VII

OPEN SPACE DEDICATION

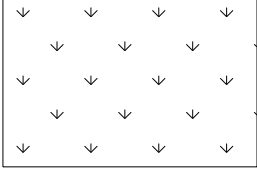
TRACT	TRACT DESCRIPTION	OPEN SPACE DEDICATION TRACT AREA (SF)	OPEN SPACE DEDICATION TRACT AREA (AC)	OWNERSHIP	MAINTENANCE
TRACT A	OPEN SPACE	165,647	3.80	METRO DISTRICT	METRO DISTRICT/CITY OF AURORA/GOLF
TRACT B	OPEN SPACE	172,224	3.95	METRO DISTRICT	METRO DISTRICT
TRACT C	OPEN SPACE	87,644	2.01	METRO DISTRICT	METRO DISTRICT
TRACT E	OPEN SPACE	130,138	2.99	METRO DISTRICT	METRO DISTRICT
TRACT J	OPEN SPACE	168,675	3.87	METRO DISTRICT	METRO DISTRICT

OPEN SPACE REQUIREMENTS

TRACT	TRACT DESCRIPTION	TOTAL TRACT AREA (SF)	TREES REQUIRED (OPEN SPACE 1/4000 SF)	TREES PROVIDED	TREES PROVIDED EXCEEDING REQUIREMENT (1 TREE = 10 SHRUBS)	SHRUBS REQUIRED (OPEN SPACE 10/4000 SF)	*SHRUBS PROVIDED	SHRUB EQUIVALENTS FOR TREES EXCEEDING REQUIREMENT (1 TREE = 10 SHRUBS)
TRACT A	OPEN SPACE	89,418	23	31	8	224	146	5 GAL
TRACT A	OPEN SPACE (GOLF)	731,167	TRACT A WILL BE SEEDED, NO REQUIREMENTS TO BE MET IN THE GOLF COURSE					
TRACT B	OPEN SPACE	73,663	19	29	10	184	101	100
TRACT B	OPEN SPACE (GOLF)	98,561	TRACT B WILL BE SEEDED, NO REQUIREMENTS TO BE MET IN THE GOLF COURSE					
TRACT C	OPEN SPACE (ISP EAST)	114,419	TRACT C WILL BE LANDSCAPED AND INSTALLED WITH THE ISP EAST CN#2021-6059-00					
TRACT D	OPEN SPACE (GOLF)	15,230	TRACT D WILL BE LANDSCAPED AND INSTALLED WITH THE GOLF COURSE CN#2022-3093-00; 2022-6062-00					
TRACT E	OPEN SPACE	130,138	33	43	10	330	238	100
TRACT F	OPEN SPACE (GOLF)	184,856	TRACT F WILL BE SEEDED, NO REQUIREMENTS TO BE MET IN THE GOLF COURSE					
TRACT G	OPEN SPACE (GOLF)	8,158	TRACT G WILL BE SEEDED, NO REQUIREMENTS TO BE MET IN THE GOLF COURSE					
TRACT H	OPEN SPACE (GOLF)	9,046	TRACT H WILL BE SEEDED, NO REQUIREMENTS TO BE MET IN THE GOLF COURSE					
TRACT I	OPEN SPACE (GOLF)	46,872	TRACT I WILL BE SEEDED, NO REQUIREMENTS TO BE MET IN THE GOLF COURSE					
TRACT J	OPEN SPACE	57,726	15	29	14	144	110	140
TRACT J	OPEN SPACE (ISP EAST)	134,520	TRACT C WILL BE LANDSCAPED AND INSTALLED WITH THE ISP EAST CN#2021-6059-00					
TRACT K	OPEN SPACE (GOLF)	31,281	TRACT K WILL BE SEEDED, NO REQUIREMENTS TO BE MET IN THE GOLF COURSE					
TOTALS		1,725,055	90	132	42	882	595	420
								1015
NOTE: (1) 2.5" CAL. TREE = (12) 5 GAL. SHRUBS, (1) 2.0" CAL. TREE = (10) 5 GAL. SHRUBS, (1) 5 GAL. SHRUB = (3) 1 GAL. GRASS								
* NUMBER EQUAL TO (TOTAL 5 GAL) + (TOTAL 1 GAL/3)								
NOTE: WHERE THE NUMBER OF TREES AND SHRUBS IS LOWER OR HIGHER THAN WHAT IS REQUIRED, THE REQUIREMENTS IS MET THROUGH THE TREE EQUIVALENT NOTED ABOVE.								

NATIVE SEED AREA: RIPARIAN SEED MIX

LOT DATA TABLE				
COMMON NAME	SCIENTIFIC NAME	NATIVE SPECIES	VARIETY	PLS LBS/ACRE
GRASSES				
BIG BLUESTEM	ANDROPOGON GERARDII	X	PAWNEE	2.5
NEBRASKA SEDGE	CAREX NEBRASCENSIS	X	NATIVE	0.4
MEADOW SEDGE	CAREX PRAEGRACILIS	X	NATIVE	0.3
INLAND SALTGRASS	DISTICHLIS STRICTA (D. SPICATA)	X	NATIVE	1.90
ELEOCHARIS PALUSTRIS	CREEPING SPIKERUSH	X	NATIVE	3
ELYMUS LANCEOLATUS SSP. PSAMMOPHILUS	STREAMBANK WHEATGRASS	X	SODAR	6.3
ELYMUS TRACHYCAULUS	SLENDER WHEATGRASS	X	PRYOR	2.1
HORDEUM JUBATUM (SYN: CRITESION JUBATUM)	FOXTAIL BARLEY	X	NATIVE	3
JUNCUS ARCTICUS (SYN: JUNCUS BALTICUS)	BALTIC RUSH/ARCTIC RUSH	X	NATIVE	1.4
PASCOPYRUN SMITHII (SYN: AGROPYRON SMITHII)	NUTTAL ALKALIGRASS	X	NATIVE	0.1
SPARTINA PECTINATA	PRAIRIE CORDGRASS	X	NATIVE	1.0
SPOROBOLUS AIROIDES	ALKALI SACATON	X	NATIVE	0.4
TOTAL POUNDS PLS/ACRE				28.7
*ALWAYS INCLUDE THESE KEY SPECIES, MAINTAIN AT LEAST A 2500 LBS/ACRE RATE FOR MIX				
**1/4 LBS MINIMUM ORDER FOR EACH SPECIES				

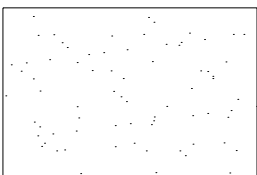


SEED MIX AVAILABLE THROUGH:

PAWNEE BUTTES SEED, INC.
605 25TH ST.
GREELEY, COLORADO 80631
(970) 356-7002

NATIVE SEED AREA: UPLAND SEED MIX

LOT DATA TABLE				
COMMON NAME	SCIENTIFIC NAME	NATIVE SPECIES	VARIETY	PLS LBS/ACRE
GRASSES				
INDIAN RICEGRASS	ACHNATHERUM HYMENOIDES	X	NATIVE	0.30
SIDEOATS GRAMA	BOUTELOUA CURTIPENDULA	X	BUTTE	1.00
BLUE GRAMA	BOUTELOUA GRACILIS (SYN: CHNODROSUM GRACILE)	X	ALMA	0.70
BLUE GRAMA	BOUTELOUA GRACILIS (SYN: CHONDROSUM GRACILE)	X	HACHITA	0.70
BUFFALOGRASS	BUCHLOE DACTYLOIDES	X	BOWIE	1.80
BUFFALOGRASS	BUCHLOE DACTYLOIDES	X	CODY	1.80
PRAIRIE SANDREED	CALAMOVILFA LONGIFOLIA	X	GOSHEN	0.30
BOTTLEBRUSH SQUIRRELTAIL	ELYMUS ELYMOIDES	X	NATIVE	0.20
NEEDLE AND THREAD GRASS	HESPEROSTIPA COMATA SSP. COMATA	X	NATIVE	1.70
GREEN NEEDLEGRASS	NASSELLA VIRIDULA (SYN: STIPA VIRIDULA)	X	LODORM	2.20
WESTERN WHEATGRASS	PASCOPYRUM SMITHII (SYN: AGROPYRON SMITHII)	X	ARRIBA	7.10
LITTLE BLUEGRASS	SCHIZACHYRIUM	X	CIMARRON	0.80
SAND DROPSEED	SPOROBOLUS CRYPTANDRUS	X	NATIVE	0.10
QUICKGUARD, STERILE WHEAT	TRITICUM AESTIVUM X SECALE CEREALE	X	STERILE COVER CROP	9.00
TOTAL POUNDS PLS/ACRE				27.7
*ALWAYS INCLUDE THESE KEY SPECIES, MAINTAIN AT LEAST A 2500 LBS/ACRE RATE FOR MIX				
**1/4 LBS MINIMUM ORDER FOR EACH SPECIES				



SEED MIX AVAILABLE THROUGH:

PAWNEE BUTTES SEED, INC.
605 25TH ST.
GREELEY, COLORADO 80631
(970) 356-7002

NOT FOR CONSTRUCTION



10200 E. Glendale Ave. Ste A-314
Denver, CO 80231
PH: 303.652.8867

ANTELOPE CREEK (KINGS POINT NORTH)

AURORA, COLORADO
INFRASTRUCTURE SITE PLAN

LANDSCAPE
PLANS

LN.2

SHEET 16

September 3, 2024



8/29/2024 9:47 AM 9:47 AM P:\OAKWOOD MASTER FOLDER\KINGS POINT\ISP ANTELOPE CREEK\CAD\SUBMITTALS\LANDSCAPE PLANS.DWG 3

LEGEND

- DECIDUOUS SHADE TREE
- DECIDUOUS ORNAMENTAL TREE
- EVERGREEN TREE
- SHRUBS
- UPLAND NATIVE SEED MIX
- RIPARIAN NATIVE SEED MIX
- CONCRETE, SEE CIVIL
- STREET LIGHT

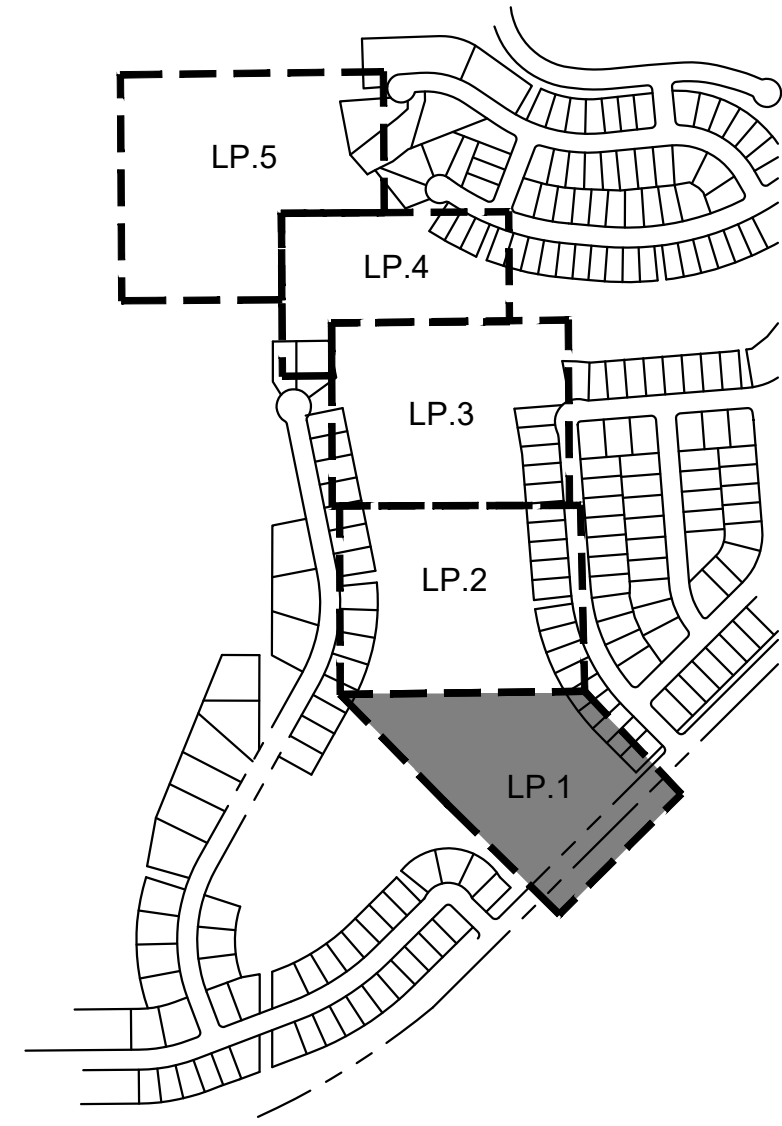
PLANT LIST

KEY	BOTANICAL NAME	COMMON NAME
DECIDUOUS SHADE TREES		
CS	CATALPA SPECIOSA	CATALPA, WESTERN
CO	CELTIS OCCIDENTALIS	HICKBERRY, WESTERN
GD	GYMNOCLADUS DIOICUS 'ESPRESSO'	KENTUCKY COFFEETREE, SEEDLESS
GTI	GLEDTISIA TRIACANTHOS INERMIS 'IMPERIAL'	HONEYLOCUST, IMPERIAL
GTS	GLEDTISIA TRIACANTHOS INERMIS 'SKYLINE'	HONEYLOCUST, SKYLINE
QB	QUERCUS BICOLOR	OAK, SWAMP WHITE
QM	QUERCUS MACROCARPA	OAK, BUR
QL	QUERCUS LACEYI	OAK, TEXAS RED
QS	QUERCUS 'SHUMMARDI'	OAK, SCHUMMARD
SJP	SOPHORA JAPONICA	JAPANESE PAGODA TREE
ORNAMENTAL TREES		
ACS	AMELANCHIER CANADENSIS	SERVICEBERRY, SHADBLOW
ATH	ACER TATARICUM 'HOT WINGS'	MAPLE, HOT WINGS
ATP	ACER TATARICUM 'PATTERN PERFECT'	MAPLE, PATTERN PERFECT
KP	KOELREUTERIA PANICULATA	GOLDENRAIN TREE
MPF	MALUS 'PRAIRIE FIRE'	CRABAPPLE, PRAIRIE FIRE
MRR	MALUS 'ROYAL RAINDROPS'	CRABAPPLE, ROYAL RAINDROPS
PNK	PRUNUS NIGRA 'PRINCESS KAY'	PRINCESS KAY PLUM
EVERGREEN TREES		
PE	PINUS EDULIS	PINE, PINON
PH	PINUS HELDREICHII (LEUCODERMIS)	PINE, BOSNIAN
PN	PINUS NIGRA	PINE, AUSTRIAN
PP	PINUS PONDEROSA	PINE, PONDEROSA
DECIDUOUS SHRUBS		
AAB	ARONIA ARBUTIFOLIA 'BRILLIANTISSIMA'	CHOKEBERRY, BRILLIANT RED
ACL	AMORPHA CANESCENS	LEADPLANT
AMA	ARONIA MELANOCARPA 'AUTUMN MAGIC'	CHOKEBERRY, AUTUMN MAGIC BLACK
AFS	ARTEMISIA FILIFOLIA	SAGEBRUSH, SAND
CMF	CHAMAEBATARIA MILLEFOLIUM	FERNBUSH
ENG	ERICAMERIA NAUSEOSA SSP. NAUSEOSA VAR. GLABRATA	RABBITBRUSH, TALL GREEN
ENN	ERICAMERIA NAUSEOSA SSP. NAUSEOSA VAR. NAUSEOSA	RABBITBRUSH, DWARF BLUE
FPA	FALLUGIA PARADOXA	APACHE PLUME
FPP	FORESTIERA PUBESCENS VAR. PUBESCENS	PRIVET, NEW MEXICO
PAR	PEROVSKIA ATRIPLICIFOLIA	SAGE, RUSSIAN

NOTE:

- ALL PROPOSED LANDSCAPING WITHIN THE SIGHT TRIANGLE SHALL BE IN COMPLIANCE WITH COA ROADWAY SPECIFICATIONS, SECTION 4.04.2.10 AND UDO SECTION 146.4.7.5.VII.

MATCHLINE - SHEET LP.2



KEYMAP



PROJECT NAME

ANTELOPE CREEK (KINGS POINT NORTH)
AURORA, COLORADO
INFRASTRUCTURE SITE PLAN

SHEET TITLE

LANDSCAPE
PLANS

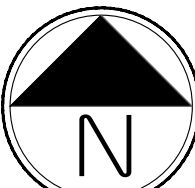
SHEET NUMBER

LP.1

SHEET 17

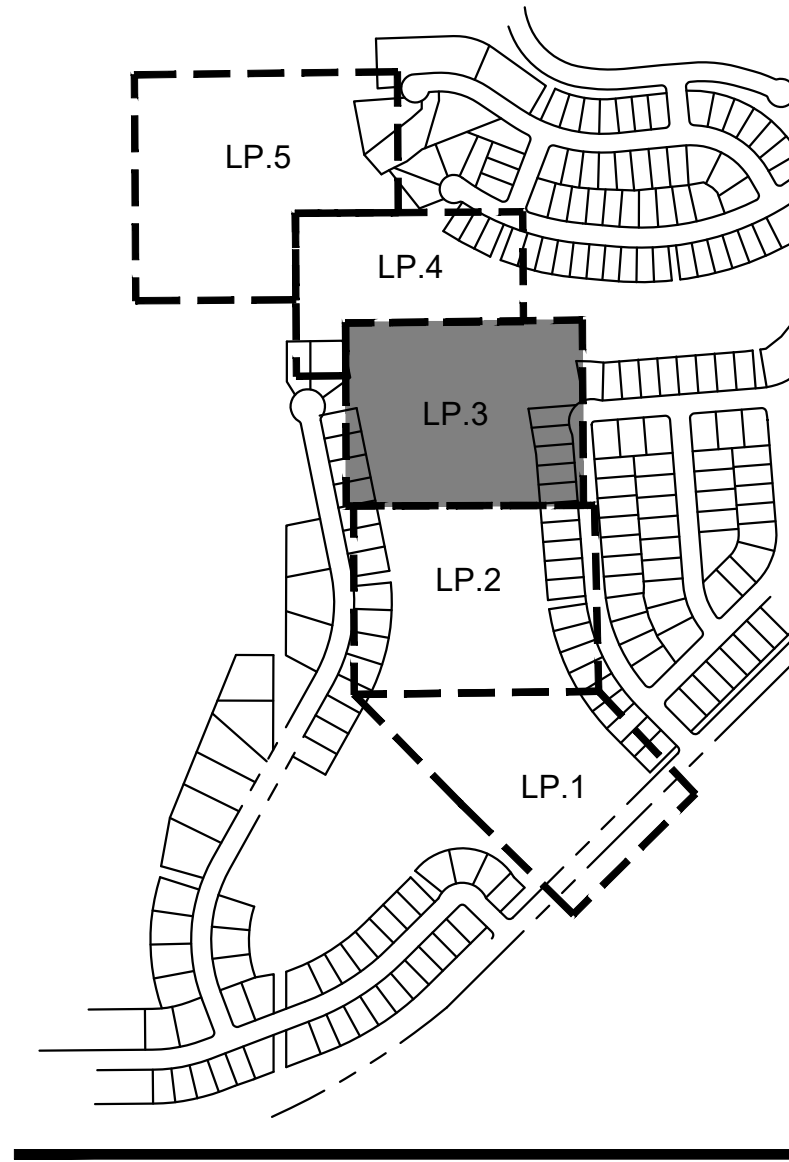
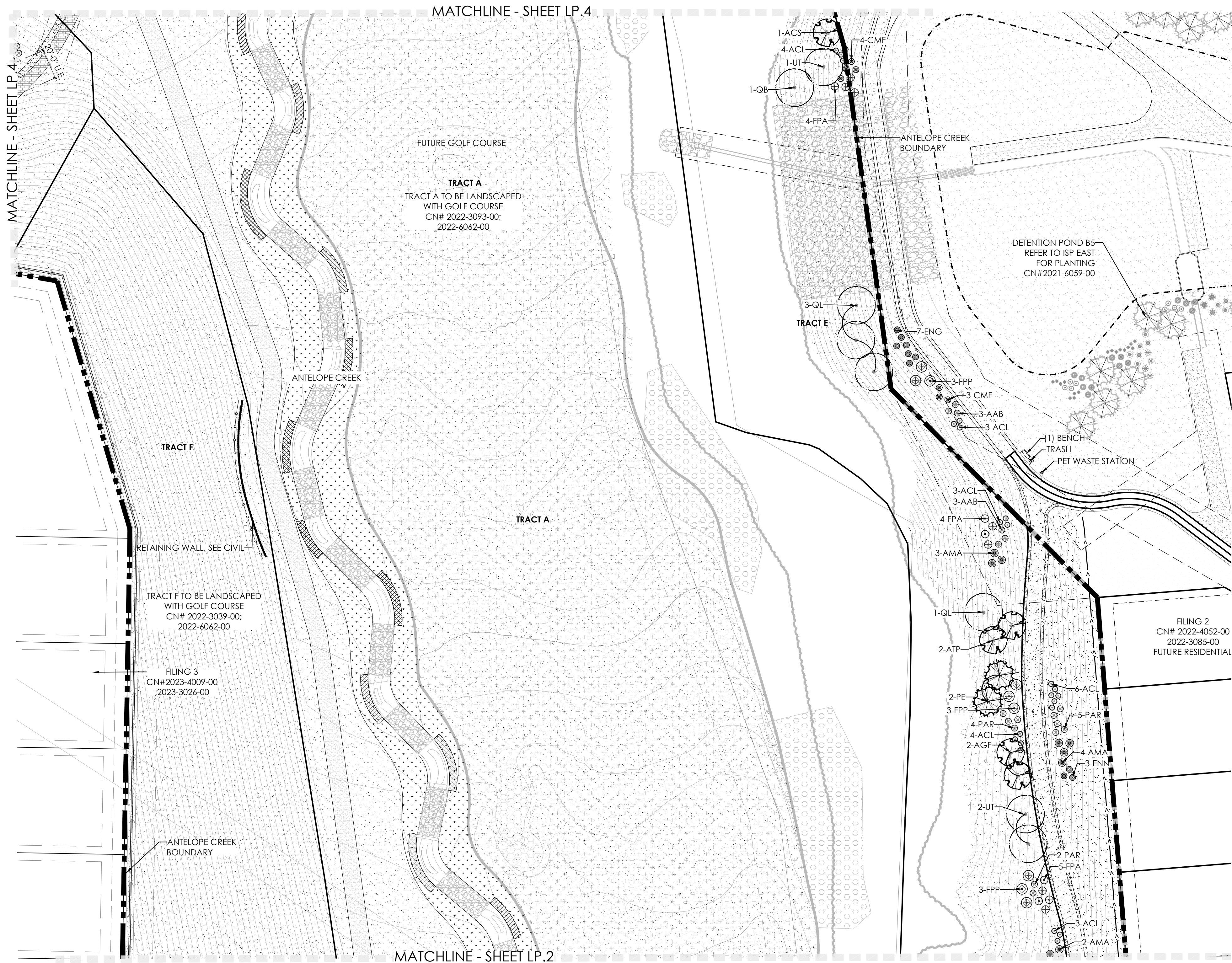
August 29, 2024

NOT FOR CONSTRUCTION



Scale: 1"= 40'-0"





LEGEND

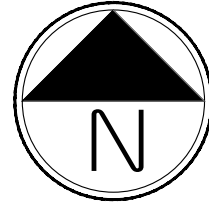
- DECIDUOUS SHADE TREE
- DECIDUOUS ORNAMENTAL TREE
- EVERGREEN TREE
- SHRUBS
- UPLAND NATIVE SEED MIX
- RIPARIAN NATIVE SEED MIX
- CONCRETE, SEE CIVIL

PLANT LIST

KEY	BOTANICAL NAME	COMMON NAME
DECIDUOUS SHADE TREES		
CS	CATALPA SPECIOSA	CATALPA, WESTERN
CO	CELTIS OCCIDENTALIS	HACKBERRY, WESTERN
GD	GYMNOCADUS DIOICUS 'ESPRESSO'	KENTUCKY COFFEETREE, SEEDLESS
GTI	GLEDITSIA TRIACANTHOS INERMIS 'IMPERIAL'	HONEYLOCUST, IMPERIAL
GTS	GLEDITSIA TRIACANTHOS INERMIS 'SKYLINE'	HONEYLOCUST, SKYLINE
QB	QUERCUS BICOLOR	OAK, SWAMP WHITE
QM	QUERCUS MACROCARPA	OAK, BUR
QL	QUERCUS LACEYI	OAK, TEXAS RED
QS	QUERCUS 'SHUMMARDI'	OAK, SCHUMMARD
SJP	SOPHORA JAPONICA	JAPANESE PAGODA TREE
ORNAMENTAL TREES		
ACS	AMELANCHIER CANADENSIS	SERVICEBERRY, SHADBLOW
ATH	ACER TATARICUM 'HOT WINGS'	MAPLE, HOT WINGS
ATP	ACER TATARICUM 'PATTERN PERFECT'	MAPLE, PATTERN PERFECT
KP	KOELREUTERIA PANICULATA	GOLDENRAIN TREE
MPF	MALUS 'PRAIRIE FIRE'	CRABAPPLE, PRAIRIE FIRE
MRR	MALUS ROYAL RAINDROPS'	CRABAPPLE, ROYAL RAINDROPS
PNK	PRUNUS NIGRA 'PRINCESS KAY'	PRINCESS KAY PLUM
EVERGREEN TREES		
PE	PINUS EDULIS	PINE, PINON
PH	PINUS HELDREICHII (LEUCODERMIS)	PINE, BOSNIAN
PN	PINUS NIGRA	PINE, AUSTRIAN
PP	PINUS PONDEROSA	PINE, PONDEROSA
DECIDUOUS SHRUBS		
AAB	ARONIA ARBUTIFOLIA 'BRILLIANTISSIMA'	CHOKEBERRY, BRILLIANT RED
ACL	AMORPHA CANESCENS	LEADPLANT
AMA	ARONIA MELANOCARPA 'AUTUMN MAGIC'	CHOKEBERRY, AUTUMN MAGIC BLACK
AFS	ARTEMISIA FILIFOLIA	SAGEBRUSH, SAND
CMF	CHAMAEBATARIA MILLEFOLIUM	FERNBUSH
ENG	ERICAMERA NAUSEOSA SSP. NAUSEOSA VAR. GLABRATA	RABBITBRUSH, TALL GREEN
ENN	ERICAMERA NAUSEOSA SSP. NAUSEOSA VAR. NAUSEOSA	RABBITBRUSH, DWARF BLUE
FPA	FALLUGIA PARADOXA	APACHE PLUME
FPP	FORESTIERA PUBESCENS VAR. PUBESCENS	PRIVET, NEW MEXICO
PAR	PEROVSKIA ATRIPLICIFOLIA	SAGE, RUSSIAN

NOTES:

1. ALL PROPOSED LANDSCAPING WITHIN THE SIGHT TRIANGLE SHALL BE IN COMPLIANCE WITH COA ROADWAY SPECIFICATIONS, SECTION 4.04.2.10 AND UDO SECTION 146.4.7.5.VII.



Scale: 1"= 20'-0"

0 10 20 40

NOT FOR CONSTRUCTION

ANTELOPE CREEK (KINGS POINT NORTH)
AURORA, COLORADO
INFRASTRUCTURE SITE PLAN

SHEET TITLE

LANDSCAPE
PLANS

SHEET NUMBER

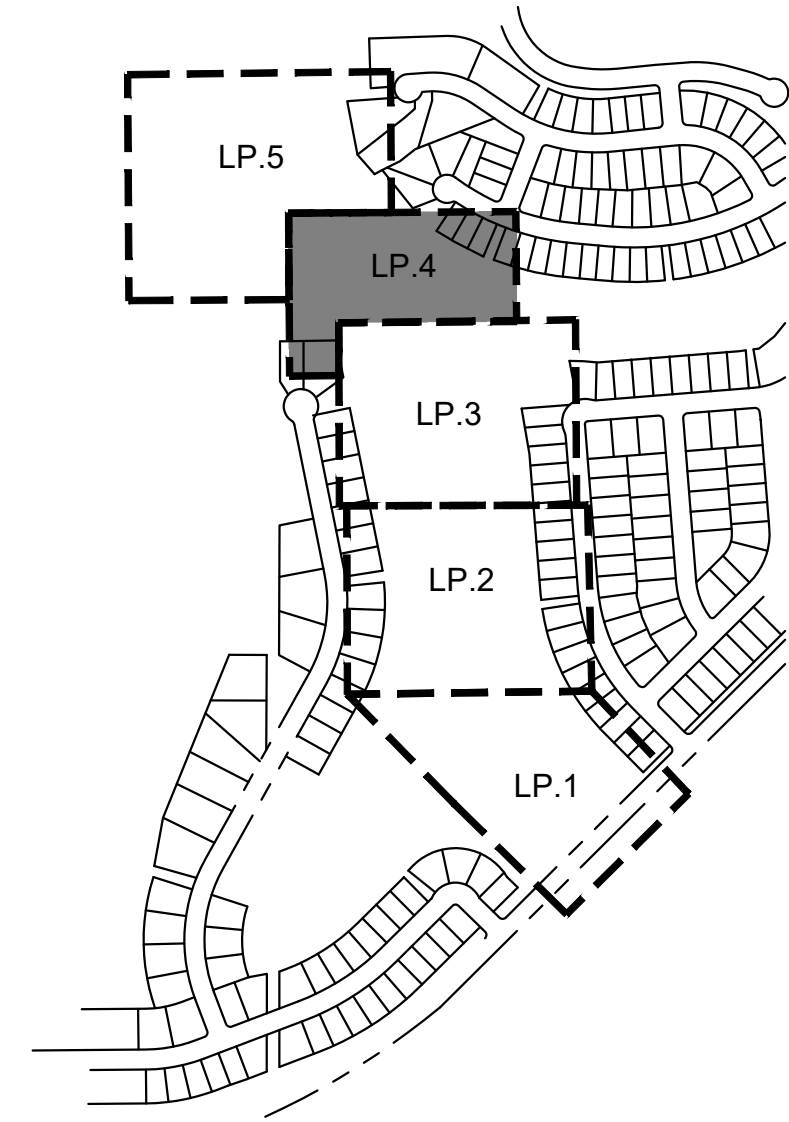
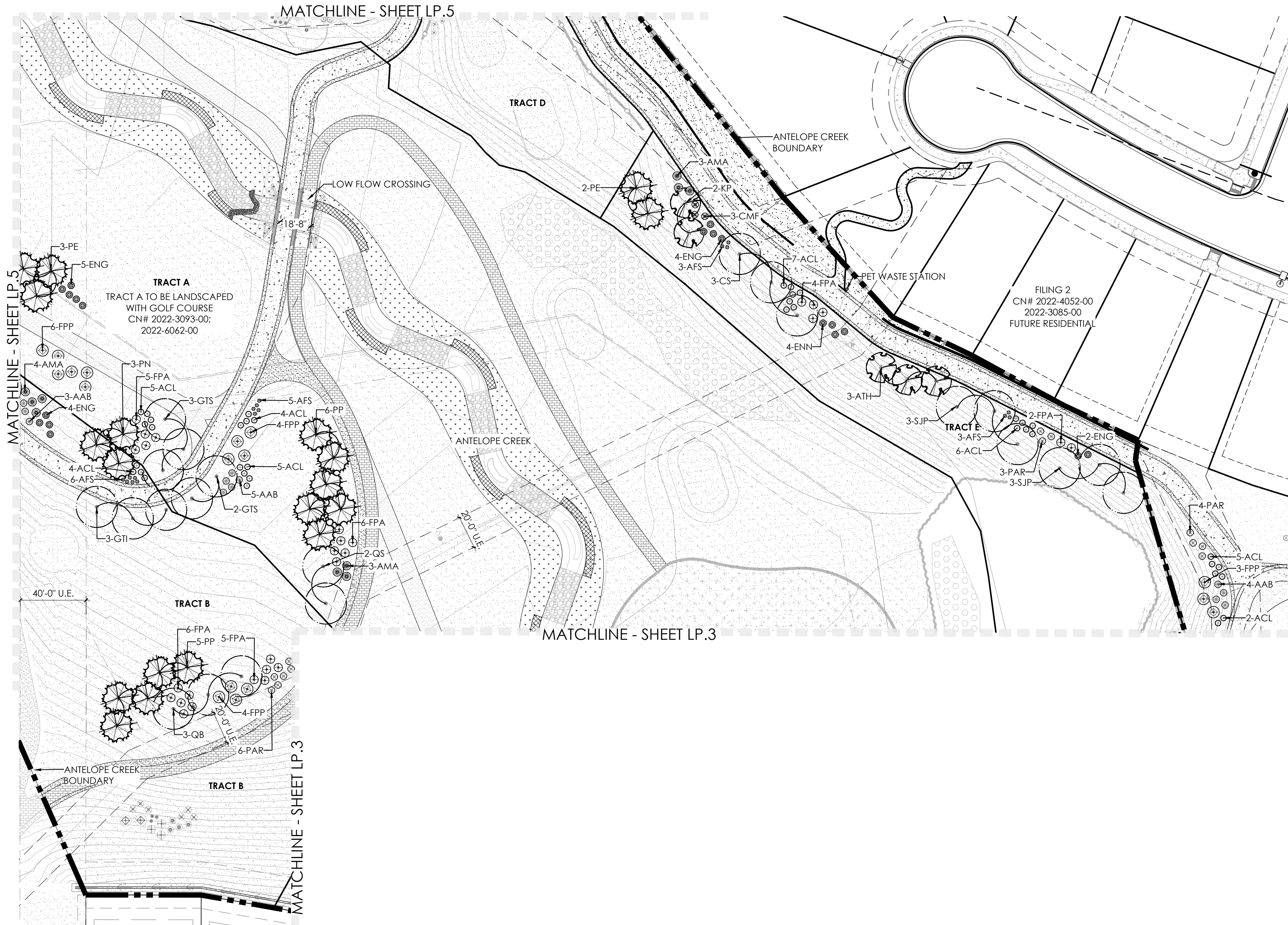
LP.3

SHEET 19

August 29, 2024

NOTES:

1. ALL PROPOSED LANDSCAPING WITHIN THE SIGHT TRIANGLE SHALL BE IN COMPLIANCE WITH COA ROADWAY SPECIFICATIONS, SECTION 4.04.2.10 AND UDO SECTION 146.4.7.5.VII.



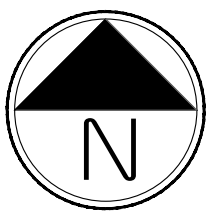
KEYMAP

LEGEND

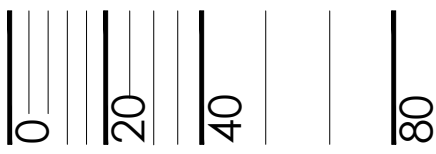
- DECIDUOUS SHADE TREE
- DECIDUOUS ORNAMENTAL TREE
- EVERGREEN TREE
- SHRUBS
- UPLAND NATIVE SEED MIX
- RIPARIAN NATIVE SEED MIX
- CONCRETE, SEE CIVIL

PLANT LIST

KEY	BOTANICAL NAME	COMMON NAME
DECIDUOUS SHADE TREES		
CS	CATALPA SPECIOSA	CATALPA, WESTERN
CO	CELTIS OCCIDENTALIS	HACKBERRY, WESTERN
GD	GYMNOCADUS DIOICUS 'ESPRESSO'	KENTUCKY COFFEETREE, SEEDLESS
GTI	GLEDITSIA TRIACANTHOS INERMIS 'IMPERIAL'	HONEYLOCUST, IMPERIAL
GTS	GLEDITSIA TRIACANTHOS INERMIS 'SKYLINE'	HONEYLOCUST, SKYLINE
QB	QUERCUS BICOLOR	OAK, SWAMP WHITE
QM	QUERCUS MACROCARPA	OAK, BUR
QL	QUERCUS LACEYI	OAK, TEXAS RED
QS	QUERCUS 'SHUMMARDI'	OAK, SCHUMMARD
SJP	SOPHORA JAPONICA	JAPANESE PAGODA TREE
ORNAMENTAL TREES		
ACS	AMELANCHIER CANADENSIS	SERVICEBERRY, SHADBLOW
ATH	ACER TATARICUM 'HOT WINGS'	MAPLE, HOT WINGS
ATP	ACER TATARICUM 'PATTERN PERFECT'	MAPLE, PATTERN PERFECT
KP	KOELREUTERIA PANICULATA	GOLDENRAIN TREE
MPF	MALLUS 'PRAIRIE FIRE'	CRABAPPLE, PRAIRIE FIRE
MRR	MALLUS 'ROYAL RAINDROPS'	CRABAPPLE, ROYAL RAINDROPS
PNK	PRUNUS NIGRA 'PRINCESS KAY'	PRINCESS KAY PLUM
EVERGREEN TREES		
PE	PINUS EDULIS	PINE, PINON
PH	PINUS HELDREICHII (LEUCODERMIS)	PINE, BOSNIAN
PN	PINUS NIGRA	PINE, AUSTRIAN
PP	PINUS PONDEROSA	PINE, PONDEROSA
DECIDUOUS SHRUBS		
AAB	ARONIA ARBUTIFOLIA 'BRILLIANTISSIMA'	CHOKEBERRY, BRILLIANT RED
ACL	AMORPHA CANESCENS	LEADPLANT
AMA	ARONIA MELANOCARPA 'AUTUMN MAGIC'	CHOKEBERRY, AUTUMN MAGIC BLACK
AFS	ARTEMISIA FILIFOLIA	SAGEBRUSH, SAND
CMF	CHAMAEBATIARIA MILLEFOLIUM	FERNBUSH
ENG	ERICAMERIA NAUSEOSA SSP. NAUSEOSA VAR. GLABRATA	RABBITBRUSH, TALL GREEN
ENN	ERICAMERIA NAUSEOSA SSP. NAUSEOSA VAR. NAUSEOSA	RABBITBRUSH, DWARF BLUE
FPA	FALLUGIA PARADOXA	APACHE PLUMIE
FPP	FORESTIERA PUBESCENS VAR. PUBESCENS	PRIVET, NEW MEXICO
PAR	PEROVSKIA ATRIPLICIFOLIA	SAGE, RUSSIAN



Scale: 1"= 40'-0"



PROJECT NAME

ANTELOPE CREEK (KINGS POINT NORTH)
AURORA, COLORADO
INFRASTRUCTURE SITE PLAN

SHEET TITLE

LANDSCAPE
PLANS

SHEET NUMBER

LP.4

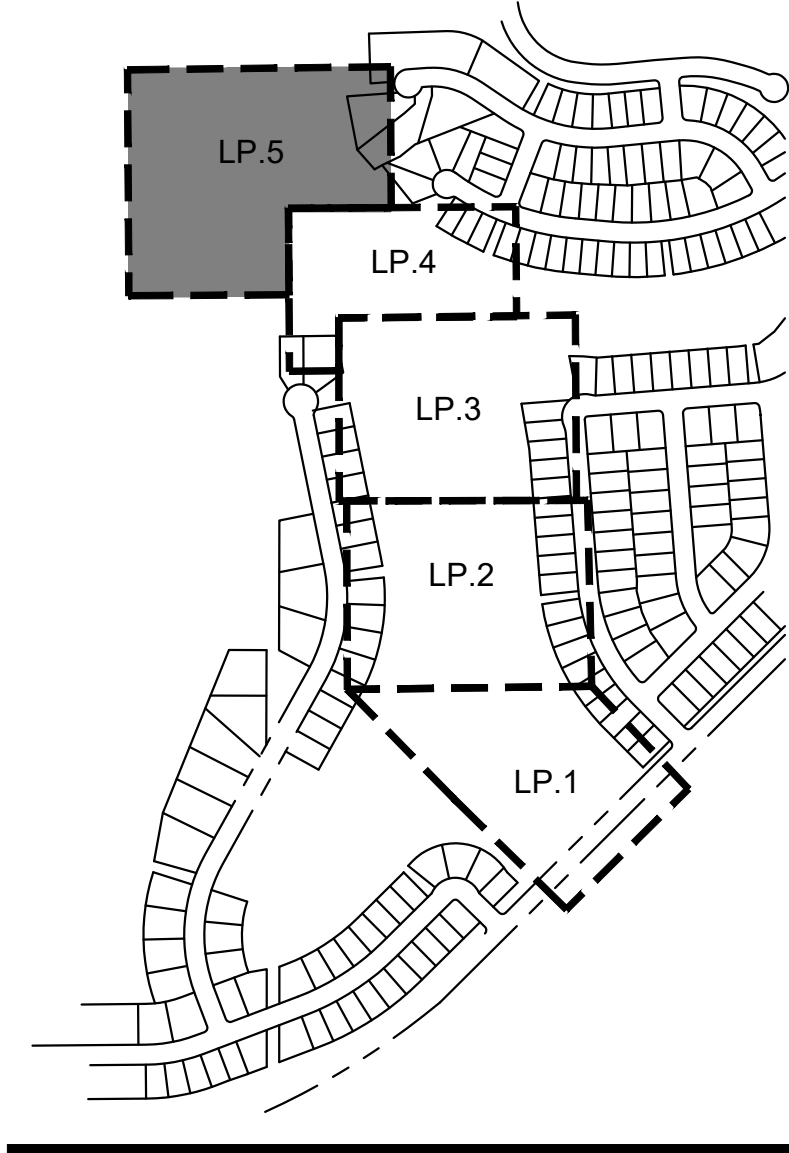
SHEET 20

August 29, 2024

NOT FOR CONSTRUCTION

NOTES:

1. ALL PROPOSED LANDSCAPING WITHIN THE SIGHT TRIANGLE SHALL BE IN COMPLIANCE WITH COA ROADWAY SPECIFICATIONS, SECTION 4.04.2.10 AND UDO SECTION 146.4.7.5.VII.



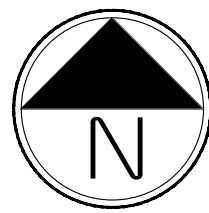
KEYMAP

LEGEND

- DECIDUOUS SHADE TREE
- DECIDUOUS ORNAMENTAL TREE
- EVERGREEN TREE
- SHRUBS
- UPLAND NATIVE SEED MIX
- RIPARIAN NATIVE SEED MIX
- CONCRETE, SEE CIVIL

PLANT LIST

KEY	BOTANICAL NAME	COMMON NAME
DECIDUOUS SHADE TREES		
CS	CATALPA SPECIOSA	CATALPA, WESTERN
CO	CELTIS OCCIDENTALIS	HACKBERRY, WESTERN
GD	GYMNOCADUS DIOICUS 'ESPRESSO'	KENTUCKY COFFEETREE, SEEDLESS
GTI	GLEDITSIA TRIACANTHOS INERMIS 'IMPERIAL'	HONEYLOCUST, IMPERIAL
GTS	GLEDITSIA TRIACANTHOS INERMIS 'SKYLINE'	HONEYLOCUST, SKYLINE
QB	QUERCUS BICOLOR	OAK, SWAMP WHITE
QM	QUERCUS MACROCARPA	OAK, BUR
QL	QUERCUS LACEYI	OAK, TEXAS RED
QS	QUERCUS 'SHUMMARDI'	OAK, SCHUMMARD
SJP	SOPHORA JAPONICA	JAPANESE PAGODA TREE
ORNAMENTAL TREES		
ACS	AMELANCHIER CANADENSIS	SERVICEBERRY, SHADBLOW
ATH	ACER TATARICUM 'HOT WINGS'	MAPLE, HOT WINGS
ATP	ACER TATARICUM 'PATTERN PERFECT'	MAPLE, PATTERN PERFECT
KP	KOELREUTERIA PANICULATA	GOLDENRAIN TREE
MPF	MALUS 'PRAIRIE FIRE'	CRABAPPLE, PRAIRIE FIRE
MRR	MALUS 'ROYAL RAINDROPS'	CRABAPPLE, ROYAL RAINDROPS
PNK	PRUNUS NIGRA 'PRINCESS KAY'	PRINCESS KAY PLUM
EVERGREEN TREES		
PE	PINUS EDULIS	PINE, PINON
PH	PINUS HELDREICHII (LEUCODERMIS)	PINE, BOSNIAN
PN	PINUS NIGRA	PINE, AUSTRIAN
PP	PINUS PONDEROSA	PINE, PONDEROSA
DECIDUOUS SHRUBS		
AAB	ARONIA ARBUTIFOLIA 'BRILLIANTISSIMA'	CHOKEBERRY, BRILLIANT RED
ACL	AMORPHA CANESCENS	LEADPLANT
AMA	ARONIA MELANOCARPA 'AUTUMN MAGIC'	CHOKEBERRY, AUTUMN MAGIC BLACK
AFS	ARTEMISIA FILIFOLIA	SAGEBRUSH, SAND
CMF	CHAMAEBATIARIA MILLEFOLIUM	FERNBUSH
ENG	ERICAMERIA NAUSEOSA SSP. NAUSEOSA VAR. GLABRATA	RABBITBRUSH, TALL GREEN
ENN	ERICAMERIA NAUSEOSA SSP. NAUSEOSA VAR. NAUSEOSA	RABBITBRUSH, DWARF BLUE
FPA	FALLUGIA PARADOXA	APACHE PLUME
FPP	FORESTIERA PUBESCENS VAR. PUBESCENS	PRIVET, NEW MEXICO
PAR	PEROVSKIA ATRIPLICIFOLIA	SAGE, RUSSIAN



Scale: 1"= 40'-0"

NOT FOR CONSTRUCTION

LANDSCAPE PLANS

ANTELOPE CREEK (KINGS POINT NORTH)
AURORA, COLORADO
INFRASTRUCTURE SITE PLAN

SHEET TITLE

SHEET NUMBER

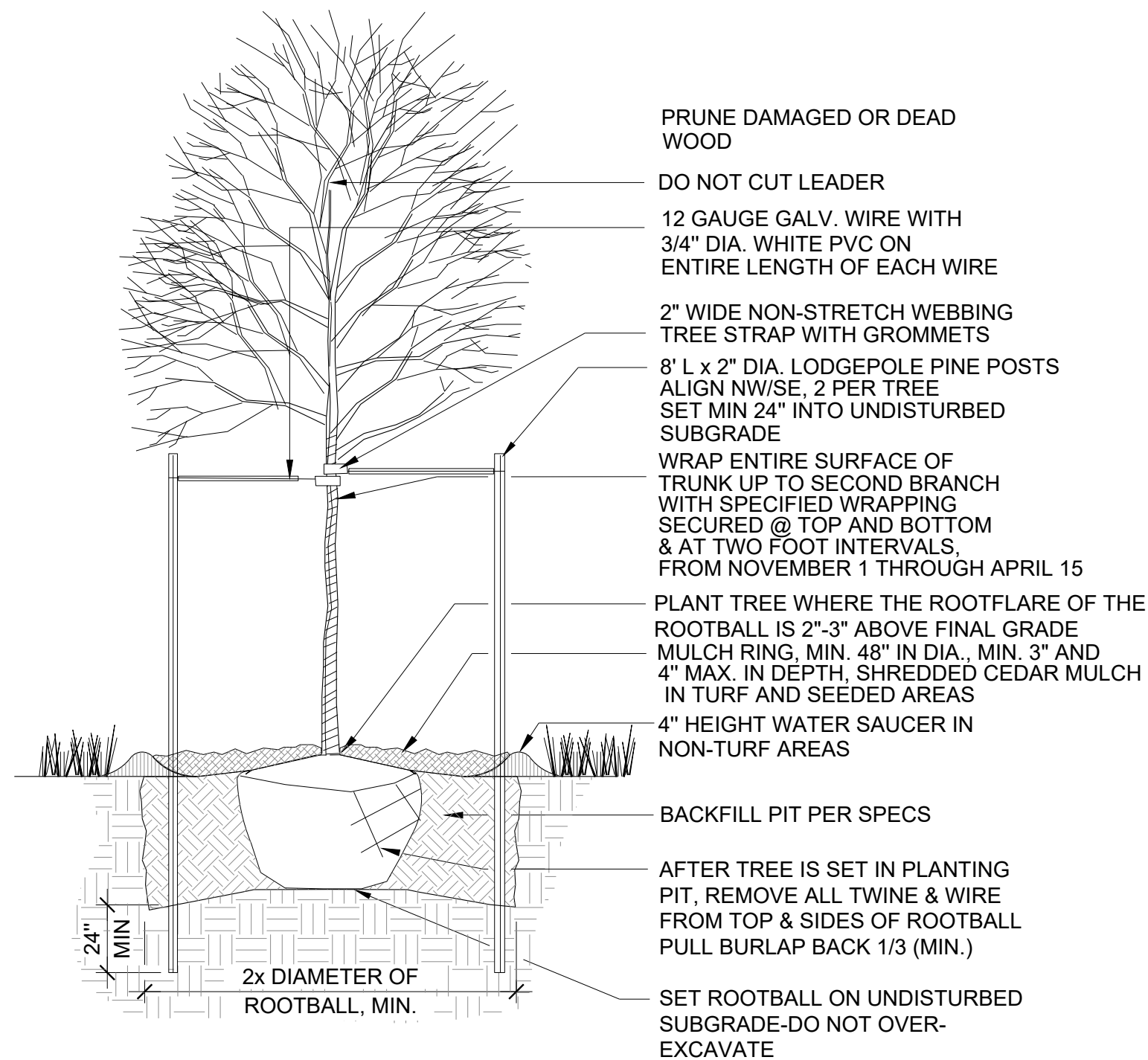
LP.5

SHEET 21

August 29, 2024

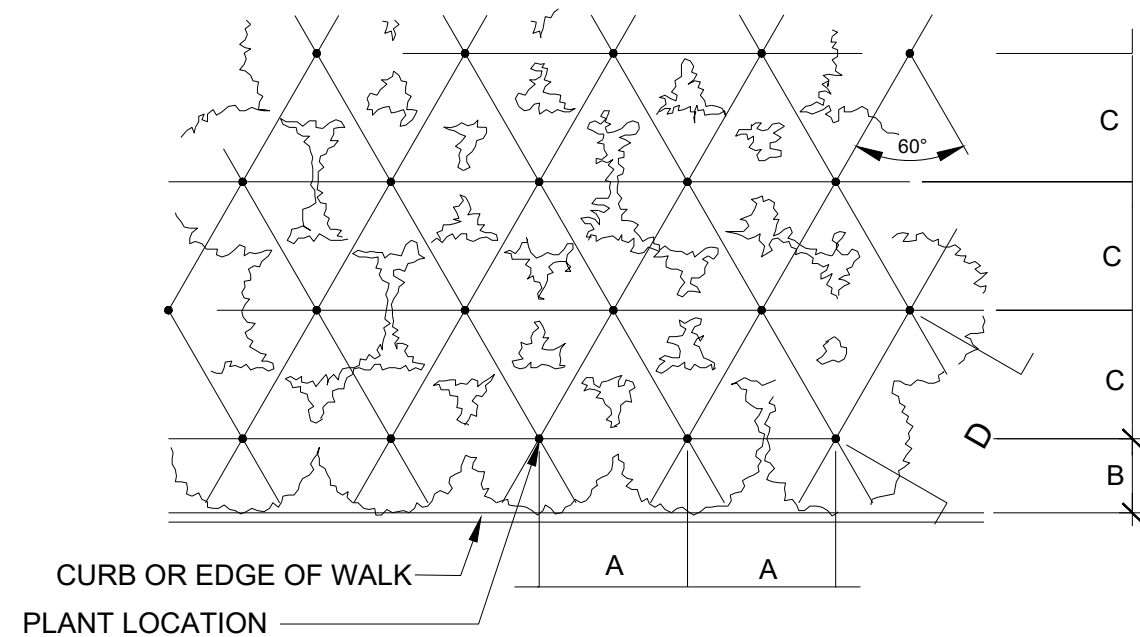
PROJECT NAME

8/29/2024 9:49 AM P:\CADD\WOOD MASTER FOLDER\KINGS POINT\ISP ANTELOPE CREEK\CADD\SUBMITTALS\SHEETS DETAILS.DWG 1



1 DECIDUOUS TREE PLANTING DETAIL

SCALE: NTS

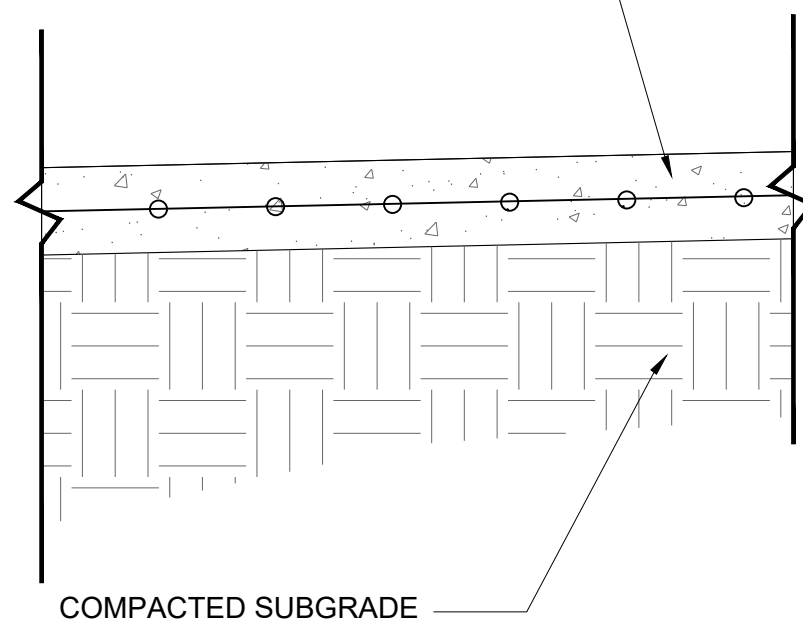


PLANT SPACING	A	B	C	D
24"	24"	18"	21"	24"
30"	30"	15"	26"	30"
36"	36"	30"	31"	36"
48"	48"	30"	42"	48"
60"	60"	36"	52"	60"

4 PERENNIAL PLANT SPACING DETAIL

SCALE: NTS

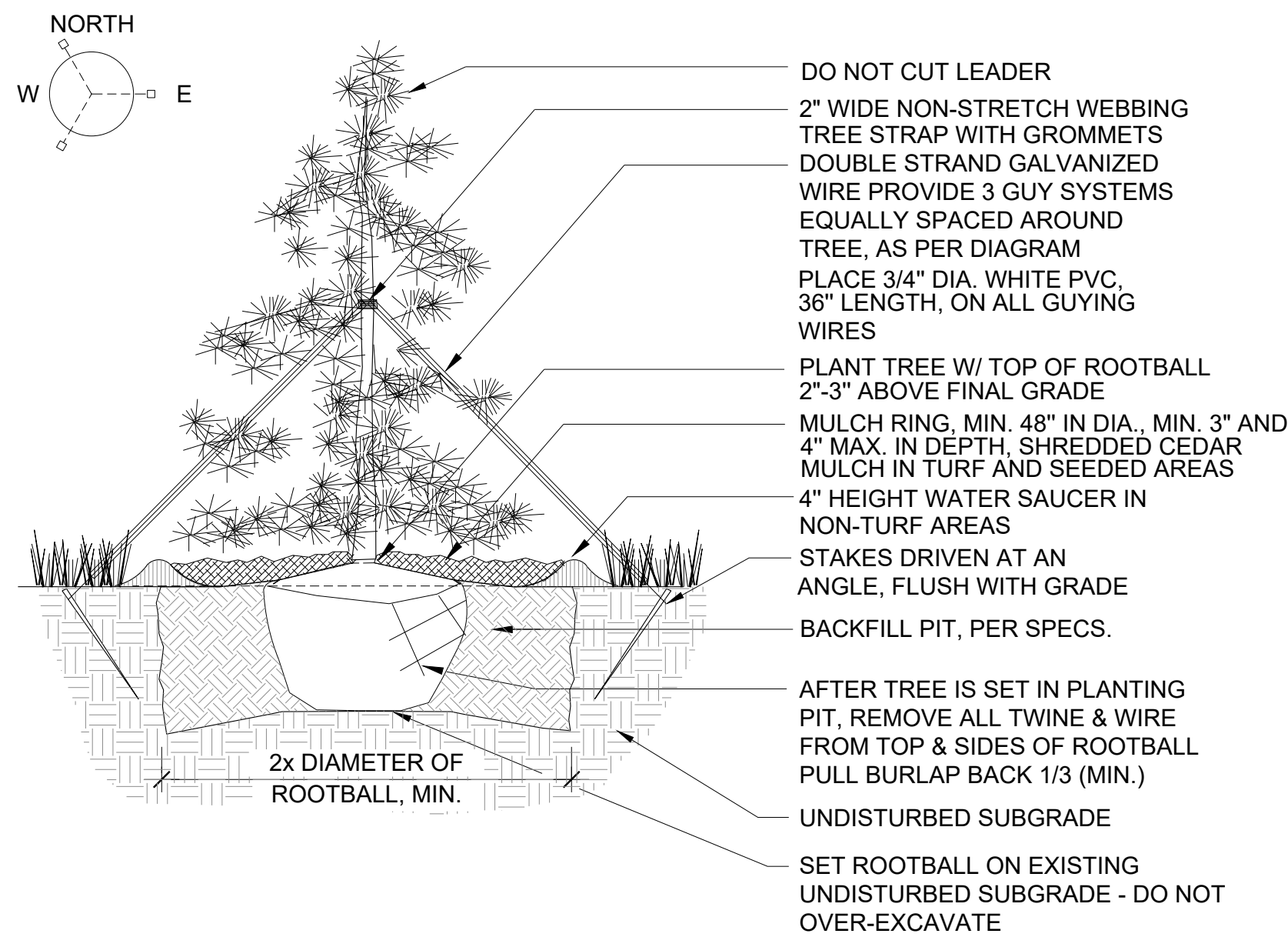
6" CONCRETE SIDEWALK WITH W2.1 X W2.1 WIRE MESH REINFORCEMENT



7 PEDESTRIAN CONCRETE DETAIL

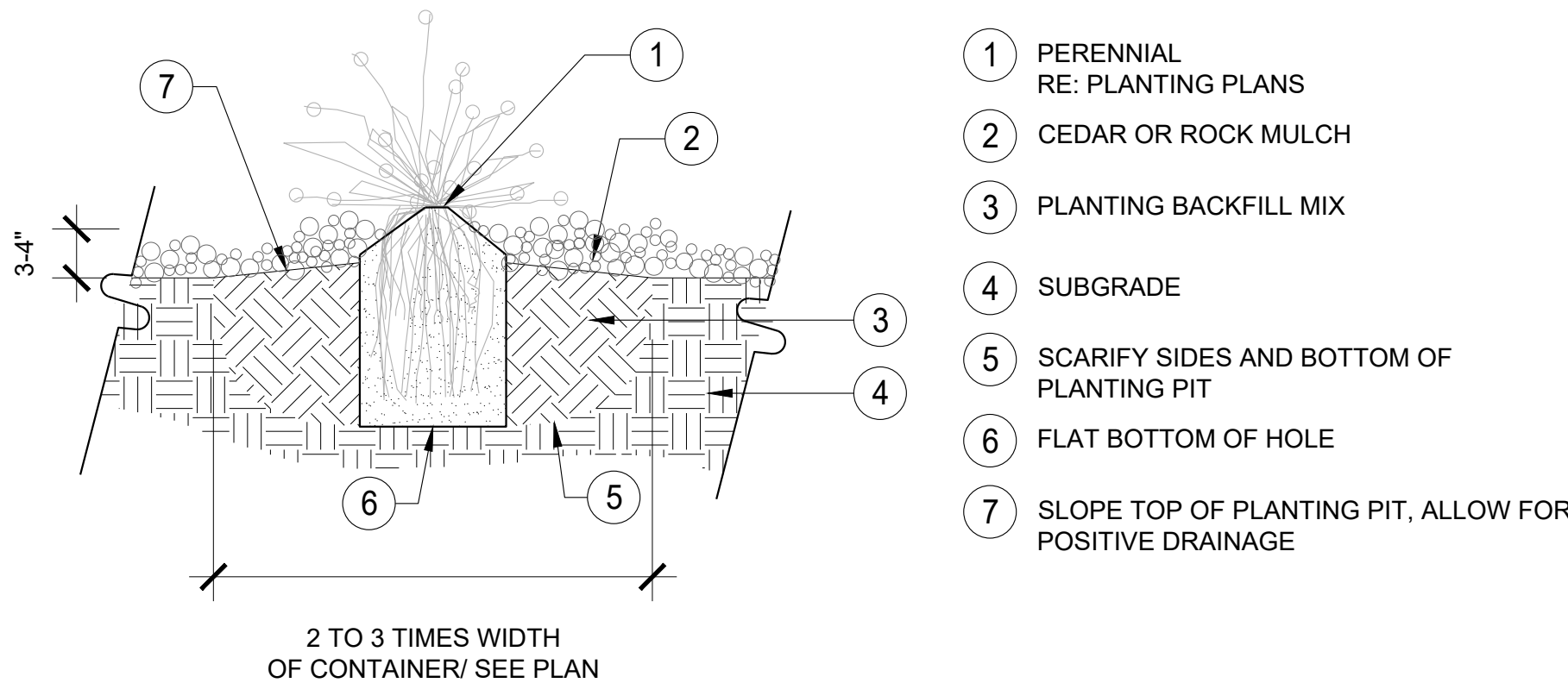
SCALE: NTS

NOTES:
1. COMPACTION LEVEL IS 95% MODIFIED PROCTOR ASTM D 1556, +/- 2% OF OPTIMUM MOISTURE.



2 EVERGREEN TREE PLANTING DETAIL

SCALE: NTS



NOTES:
1. DO NOT PRUNE TO COMPENSATE FOR ROOT LOSS.
2. PRUNE ALL DEAD FOLIAGE.
3. HANDLE ONLY BY ROOTBALL.
4. REMOVE FROM CONTAINER AND PLACE GENTLY INTO HOLE.
5. PLACE BEST SIDE TO MOST FREQUENT VIEWING, NOTIFY LANDSCAPE ARCHITECT PRIOR TO PLANTING FOR STAKED LOCATIONS.
6. BACKFILL 3/4 OF THE HOLE AND WATER THOROUGHLY WHILE WORKING SOIL WITH HANDS TO ELIMINATE ANY AIR POCKETS.
7. REMOVE 2" OF MULCH FROM AROUND BASE OF PLANT.

5 PERENNIAL PLANTING DETAIL

SCALE: NTS



8 BENCH

SCALE: NTS



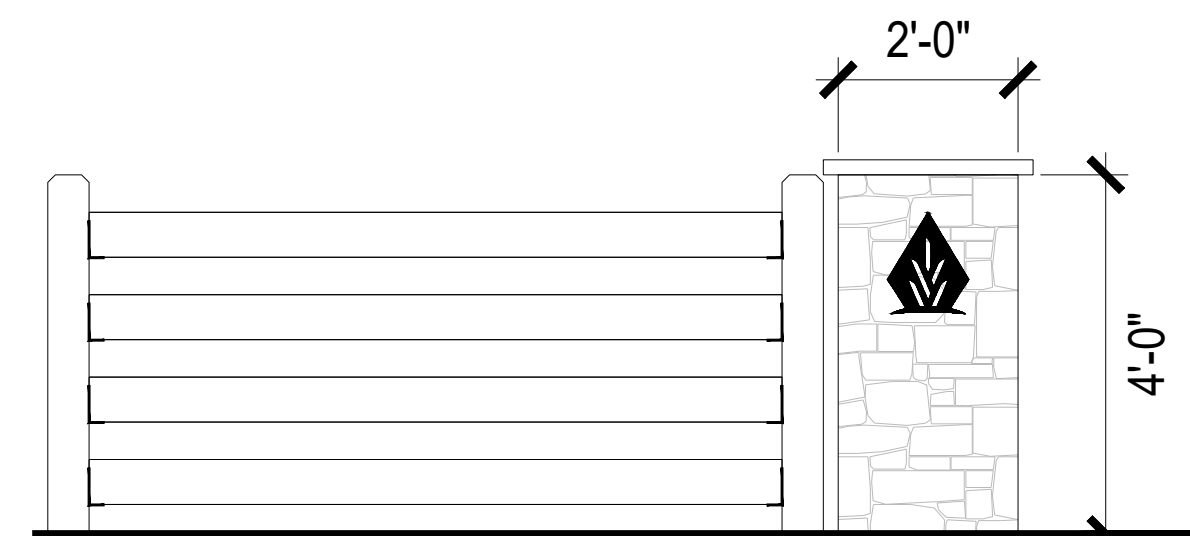
9 TRASH

SCALE: NTS



10 PET WASTE STATION

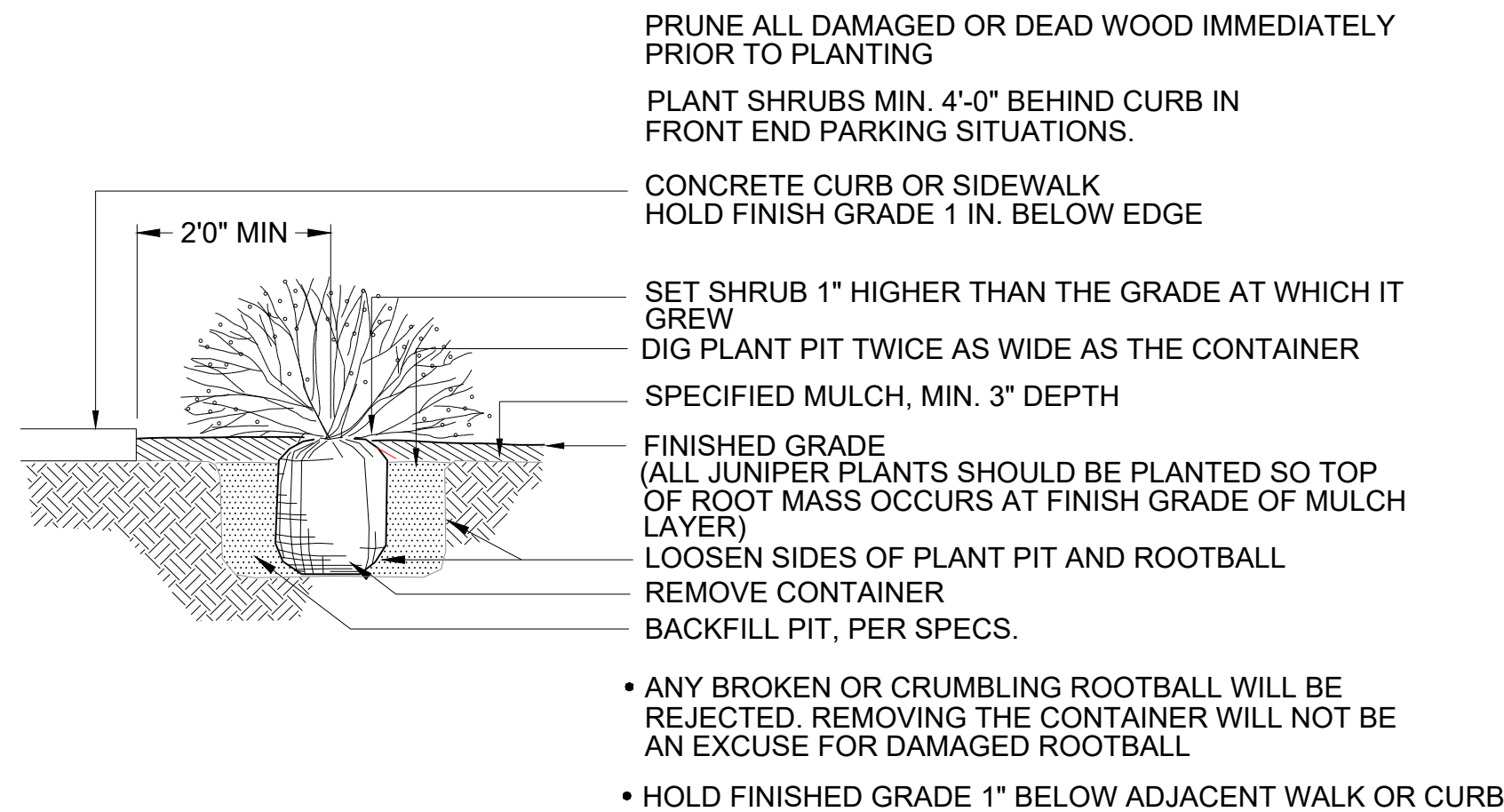
SCALE: NTS



11 TRAIL CONNECTION SIGN - 4' COLUMN WITH FENCE

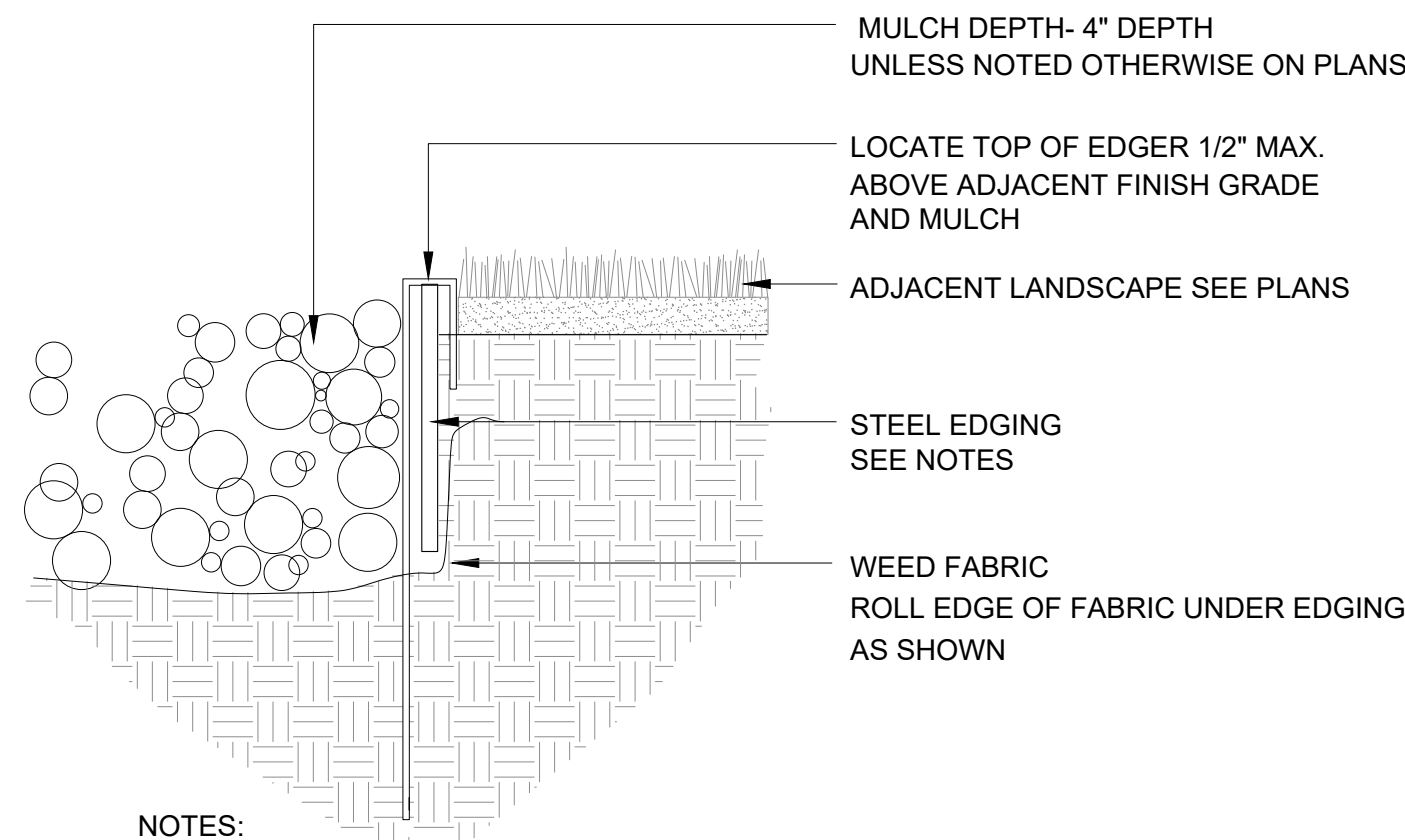
SCALE: NTS

NOTE:
ALL DETAILS ARE FOR REFERENCE ONLY. FINAL STRUCTURES TO BE DETERMINED AT CONSTRUCTION DOCUMENTS.



3 SHRUB PLANTING DETAIL

SCALE: NTS



NOTES:
1. STEEL EDGING TO BE MIN. 14 GA., 6", ROLL TOP W/ 14" STAKES
2. EDGING SHALL BE POWDER COATED, BLACK
3. EDGING SHALL ABUT ALL CONCRETE CURBS AND WALKS PERPENDICULAR, AND FLUSH W/ FINISH GRADE OF CONCRETE.
4. ALL JOINTS SHALL BE SECURELY STAKED.

6 STEEL EDGING

SCALE: NTS

NOT FOR CONSTRUCTION

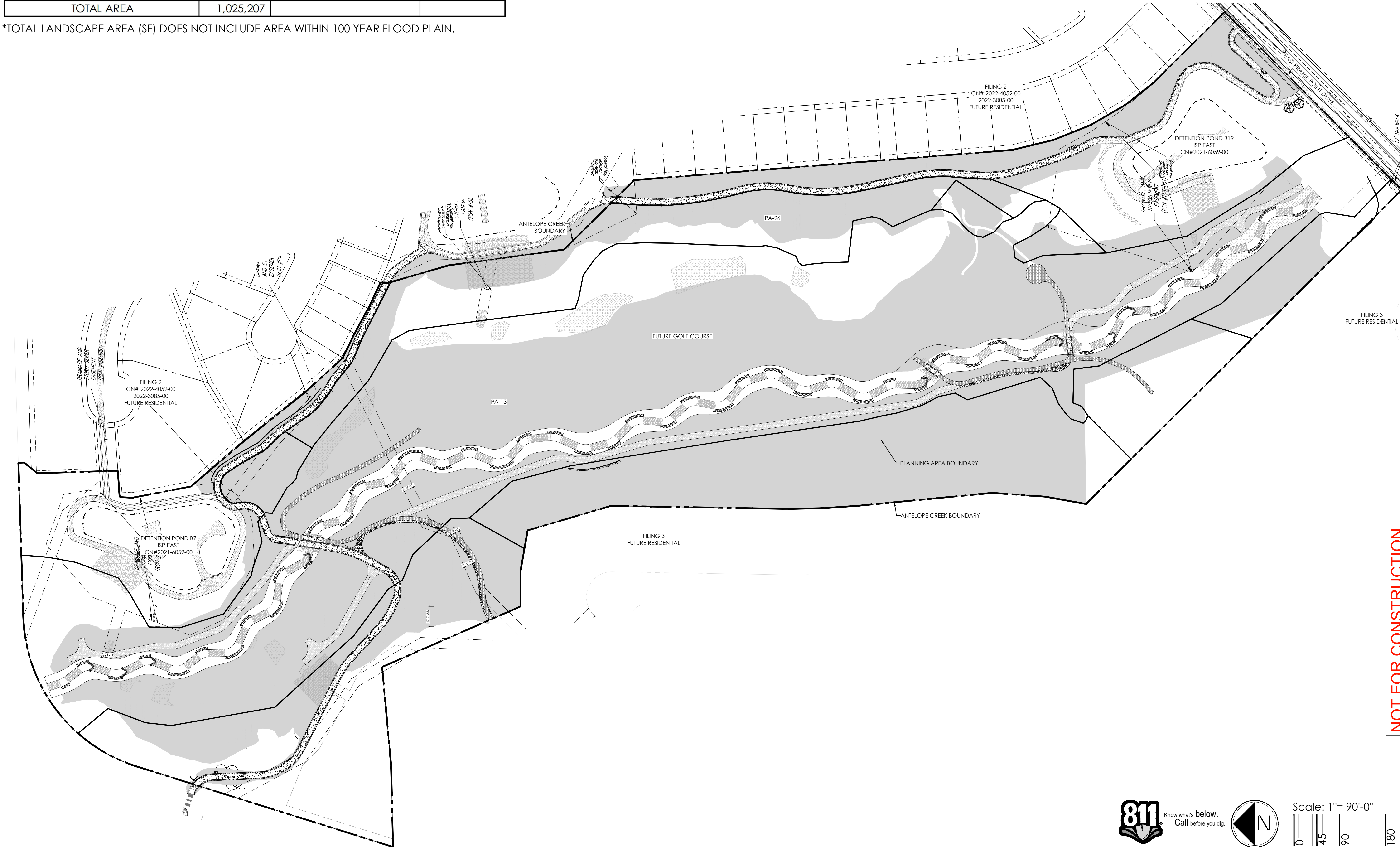
HYDROZONE TABLE

WATER USE TYPE	AREA (SF)	PERCENTAGE OF AREA	
Z-ZONE	978,807	100%	
*TOTAL	978,807	100%	
* INCLUDES ALL Z ZONE IN TRACT AREAS.			
	QUANTITY	AREA VALUE (SF)	TOTAL AREA
CANOPY TREES	47	720	33,840
EVERGREEN/ORNAMENTAL TREES	40	314	12,560
TOTAL	87		46,400
TOTAL AREA	1,025,207		

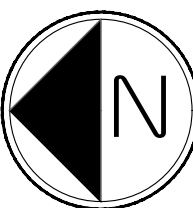
*TOTAL LANDSCAPE AREA (SF) DOES NOT INCLUDE AREA WITHIN 100 YEAR FLOOD PLAIN.

LEGEND

- Z-ZONE: NATIVE SEED AREA
- DECIDUOUS CANOPY TREE
- EVERGREEN TREE
- ORNAMENTAL TREE



Know what's below.
Call before you dig.



Scale: 1"= 90'-0"

0 45 90 180

NOT FOR CONSTRUCTION

HYDROZONE
MAP

SHEET NUMBER

LH.1

SHEET 23

August 29, 2024

ANTELOPE CREEK (KINGS POINT NORTH)
AURORA, COLORADO
INFRASTRUCTURE SITE PLAN

PROJECT NAME



10200 E. Girard Ave. Ste A-314
Denver, CO 80231
PH: 303.652.8867

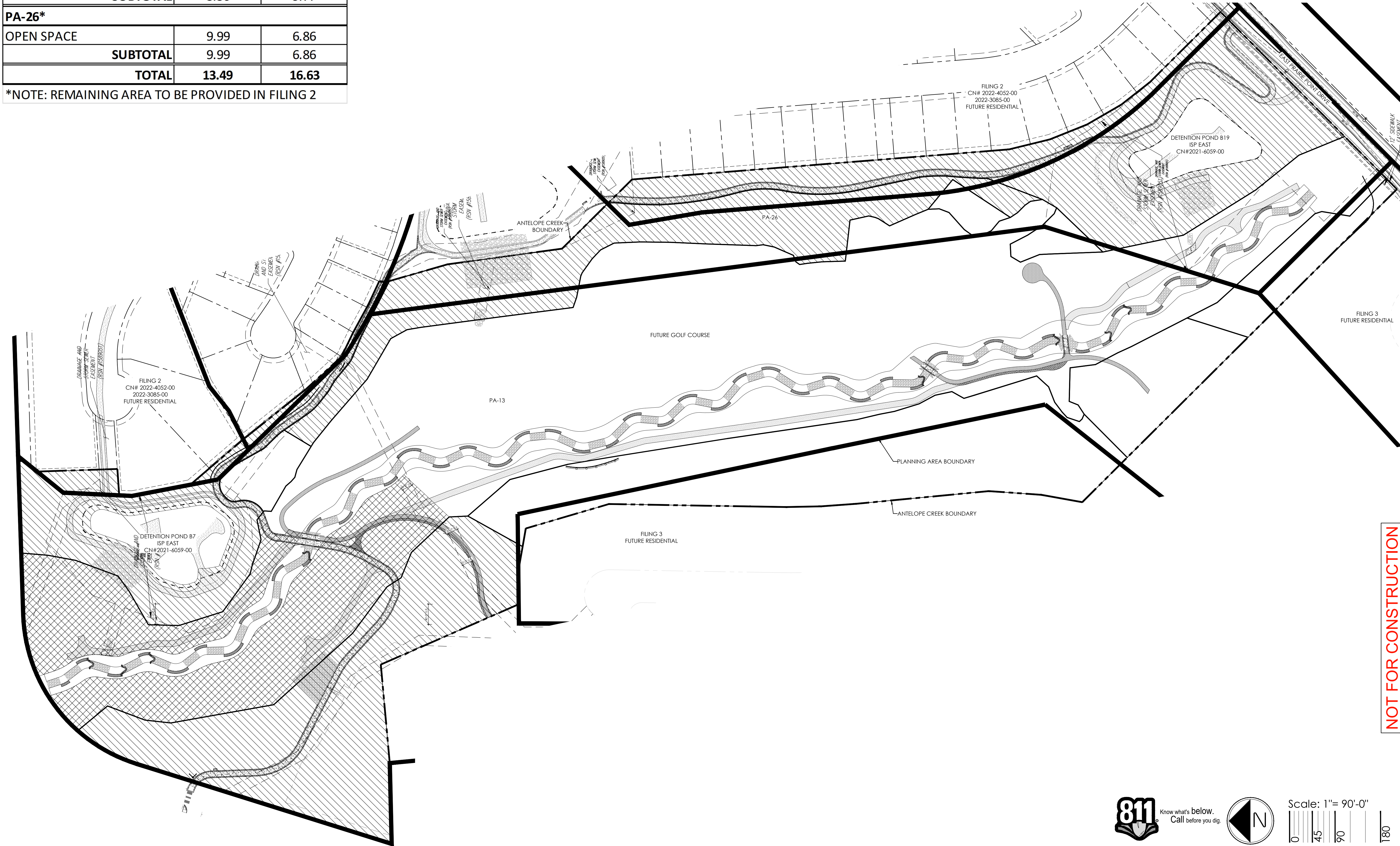
OPEN SPACE DATA

PLANNING AREA	REQUIRED OPEN SPACE (ACRES)	PROVIDED OPEN SPACE (ACRES)
PA-13		
OPEN SPACE	3.50	5.97
OPEN SPACE (FLOODPLAIN)		3.80
SUBTOTAL	3.50	9.77
PA-26*		
OPEN SPACE	9.99	6.86
SUBTOTAL	9.99	6.86
TOTAL	13.49	16.63

*NOTE: REMAINING AREA TO BE PROVIDED IN FILING 2

LEGEND

- OPEN SPACE
- OPEN SPACE (FLOODPLAIN)



NOT FOR CONSTRUCTION

ANTELOPE CREEK (KINGS POINT NORTH)
AURORA, COLORADO
INFRASTRUCTURE SITE PLAN

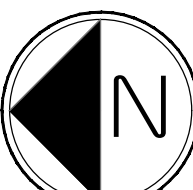
OPEN SPACE
EXHIBIT

SHEET NUMBER

OS.1

SHEET 24

August 29, 2024



Scale: 1"= 90'-0"

0 45 90 180