

WINDLER – North Park Phase II

Letter of Introduction

North Park, beginning at the intersection of E. 56th Ave. and N. Biloxi St. is a neighborhood park (PK-1) within the Windler Community as part of the Windler Community Master Plan (DA-1707-07, CN:2005-2017-01;2021-7006-00); an 850-acre site in northeast Aurora, straddling E-470 between E. 48th and E. 56th Avenues, and extending to Harvest Road on the east. North Park will be maintained in perpetuity by the Windler Public Improvement Authority.

North Park Phase II comprises Tract A, just south of CTR-1, which was submitted with the E. 56th Ave. ISP (CN: 2021-6037-01) in between N. Biloxi St. and N. Buchanan St. The extension of the stormwater infrastructure along E. 56th Ave provides environmental and social benefit to the Windler community. It includes extensive play opportunities, community gathering spaces, as well as outlooks and views of the landscape, pollinator gardens, and xeriscape planting that will meet open space requirements.

North Park Phase II Landscape Design Approach

North Park Phase II draws on stormwater infrastructure and the native Colorado prairie as an inspiration to provide a large area of play and exploration within the Windler community.

North Park (PK-1) – E. 56th Ave. and N. Biloxi St

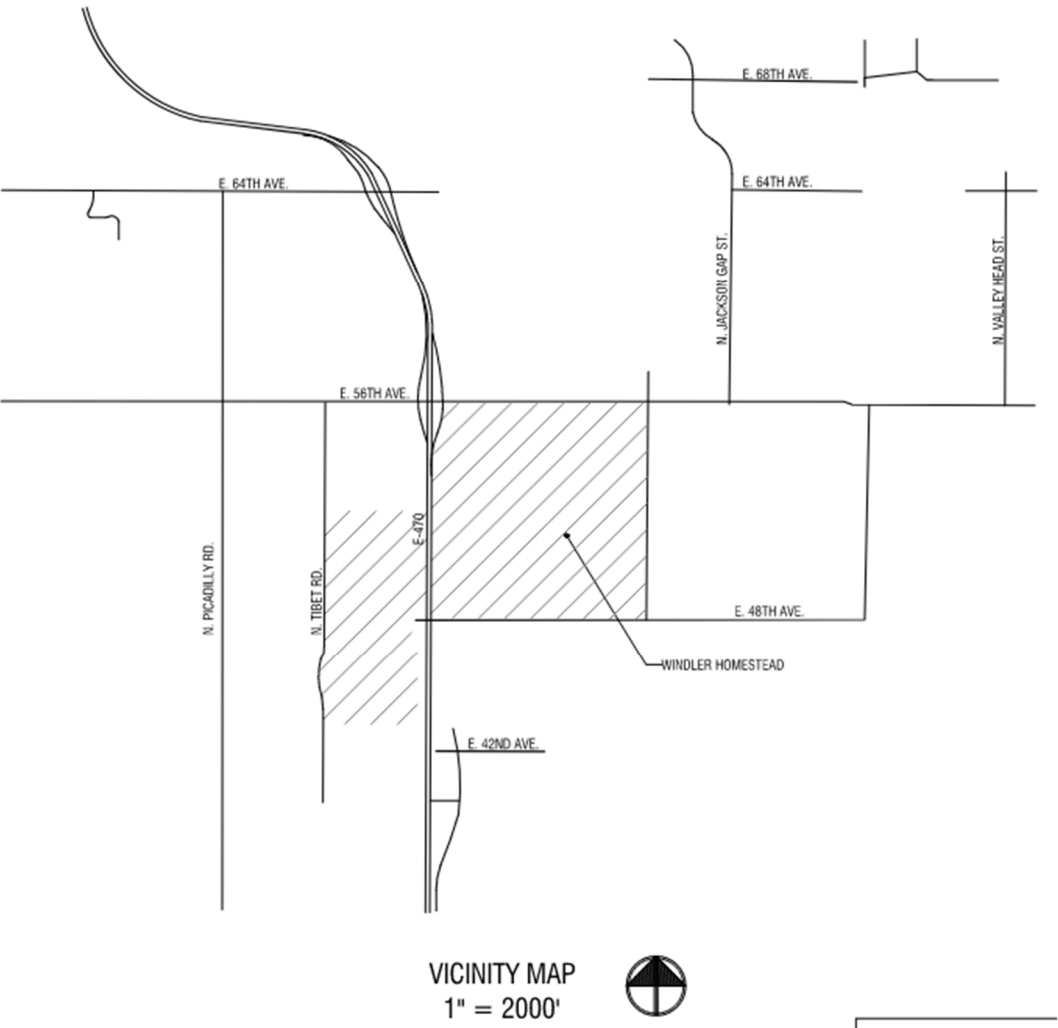
North Park (PK-1) is designated by the Windler Master Plan as a neighborhood park. It sits at the termination of the vast linear park beginning in NHBD E and continuing in NHBD C and Village North. This Neighborhood Park boasts extensive nature play that includes embankment slides, swings, and climbable features. In addition, it features a shade structure and seating area, pollinator planting with bee hotels, and open turf areas that will provide a large community gathering space for the additional surrounding neighborhoods including Parcel B (PA-2), Village North (PA-3 and PA-17), and Neighborhoods H (PA-15) and I (PA-18).

ADDITIONAL INFORMATION:

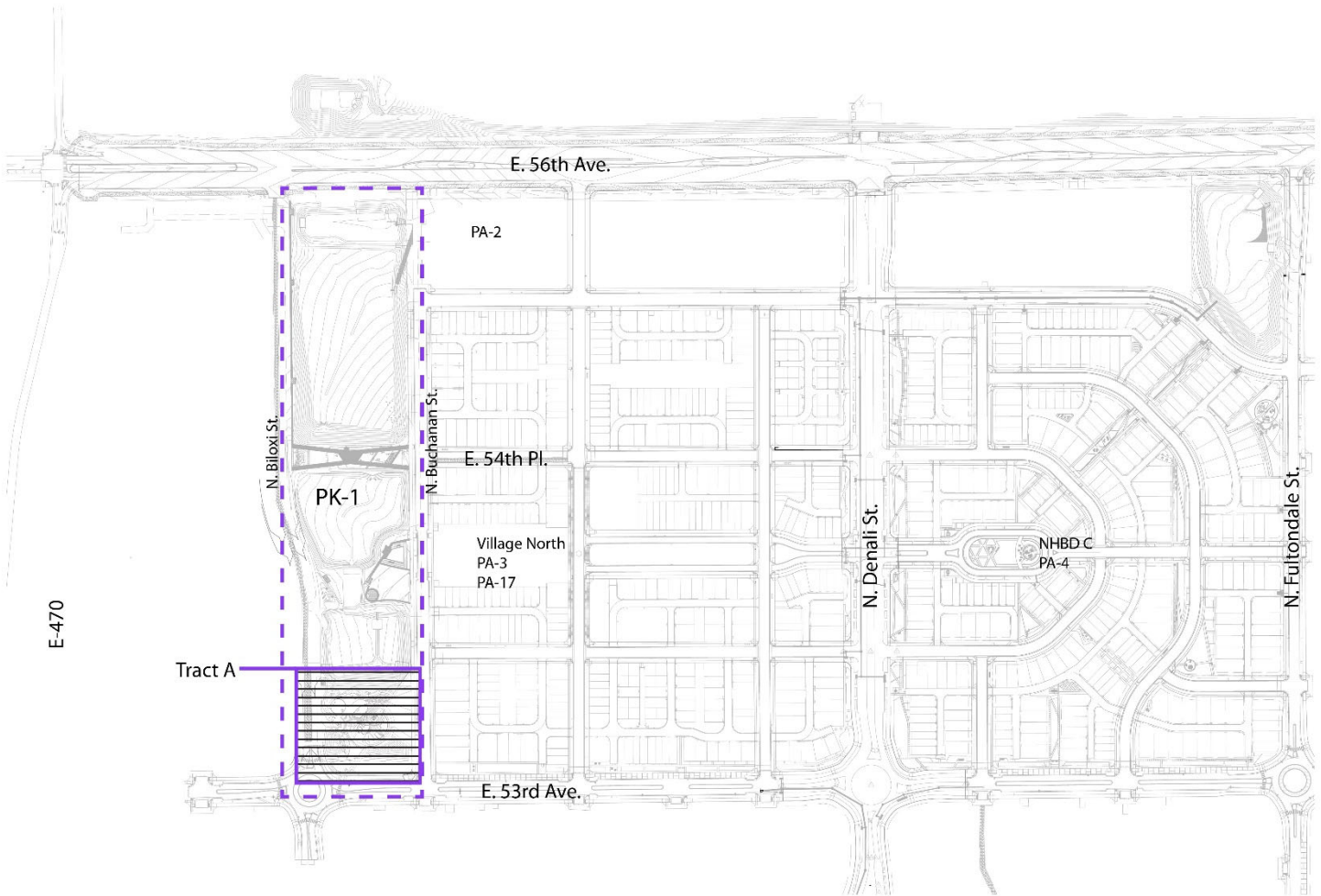
Context Map

SITE PLAN – WINDLER NORTH PARK PHASE II

LOCATION IN SECTION 18 AND 24, TOWNSHIP 3 SOUTH, RANGE 65 WEST AND 66 WEST, WEST OF THE SIXTH
PRINCIPAL MERIDIAN, CITY OF AURORA, COUNTY OF ADAMS, STATE OF COLORADO



North Park Phase II Location



Developer

GVP Windler LLC
5750 DTC Parkway, Ste 210
Greenwood Village, CO 80111
Contact: Don Provost
Phone: (720) 227-3618
Email: DGP@albdev.com

Engineer

Westwood Professional Services
10333 E. Dry Creek Rd. Ste. 400
Englewood, CO 80112
Contact: Tom Odle
Phone: (720) 249-3575
Email: tom.odle@westwoodps.com

Surveyor

Westwood Professional Services
10333 E. Dry Creek Rd. Ste. 400
Englewood, CO 80112
Contact: Tom Odle
Phone: (720) 249-3575
Email: tom.odle@westwoodps.com

Planner/Landscape Architect

Civitas Inc.
1200 Bannock St.
Denver, CO 80204
Contact: Merina Irfano
Phone: (303) 818-8922
Email: mirfano@civitasinc.com