

12/20/2024

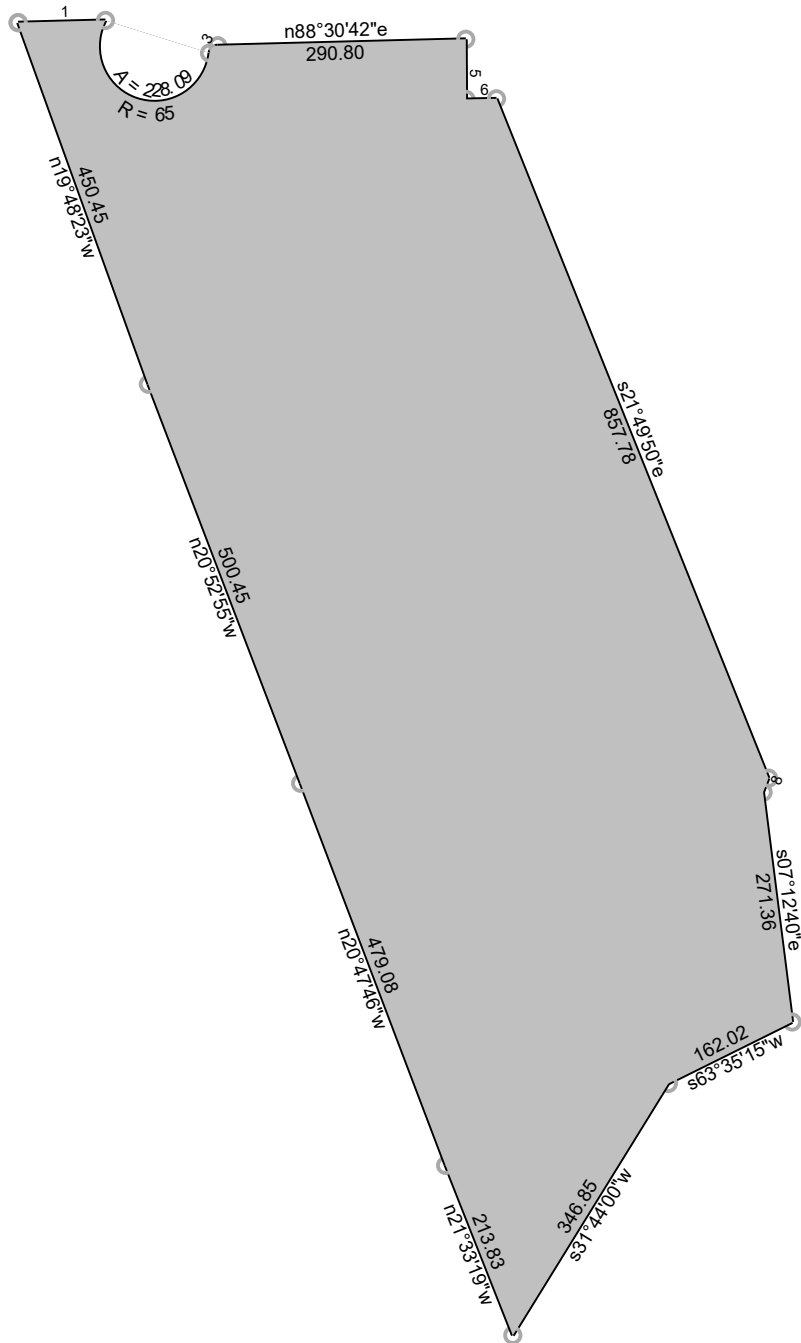
Scale: 1 inch= 250 feet

File: Overall.ndp

Tract 1: 32.2146 Acres, Closure: n00.0000e 0.00 ft. (1/999999), Perimeter=5615 ft.

01 s33.3556w 117.98
 02 s27.0356w 234.58
 03 s23.3903w 384.81
 04 s20.3519w 262.30
 05 s23.5743w 76.24
 06 s06.1545e 176.22
 07 s56.5406e 51.87
 08 s41.0137e 65.99
 09 s73.0342w 260.91
 10 s52.0656w 127.58
 11 s21.0939w 437.02

12 n27.4640w 191.84
 13 n21.3319w 259.37
 14 n20.4746w 479.08
 15 n20.5255w 500.45
 16 n19.4823w 450.45
 17 n88.3042e 1230.18
 18 n88.3155e 307.79



12/18/2024

Scale: 1 inch= 225 feet

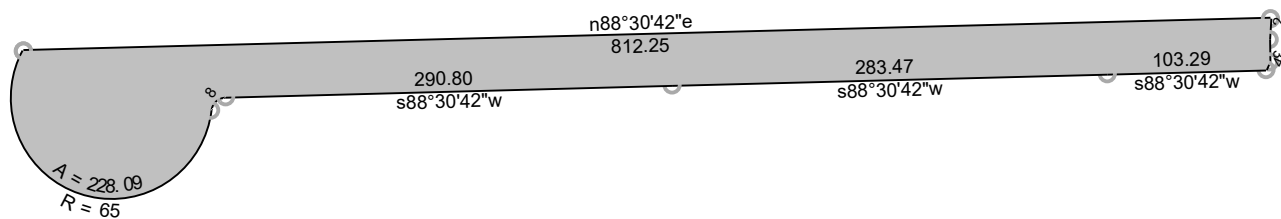
File: Lot 1, Block 1.ndp

Tract 1: 15.5174 Acres, Closure: n49.2026e 0.01 ft. (1/315717), Perimeter=4041 ft.

01 n88.3042e 102.41	11 s31.4400w 346.85
02 Lt, r=65.00, delta=201.0331, arc=228.09, chord=s72.3131e 127.81	12 n21.3319w 213.83
03 Rt, r=10.00, delta=081.3358, arc=14.24, chord=n47.4343e 13.06	13 n20.4746w 479.08
04 n88.3042e 290.80	14 n20.5255w 500.45
05 s00.2057e 70.75	15 n19.4823w 450.45
06 n88.3042e 35.50	
07 s21.4950e 857.78	
08 s21.2342w 17.59	
09 s07.1240e 271.36	
10 s63.3515w 162.02	



01 n88.3042e 283.47	10 s21.2342w 355.67
02 Rt, r=35.00, delta=092.3343, arc=56.54, chord=s45.1227e 50.59	11 n21.4950w 857.78
03 s13.3952e 4.17	12 s88.3042w 35.50
04 s00.1518w 80.14	13 n00.2057w 70.75
05 Lt, r=94.00, delta=021.5225, arc=35.89, chord=s10.5338e 35.67	
06 s21.4950e 271.27	
07 Lt, r=94.00, delta=044.3102, arc=73.04, chord=s44.0521e 71.21	
08 s66.2052e 33.45	
09 s17.5916w 74.70	



Scale: 1 inch= 125 feet

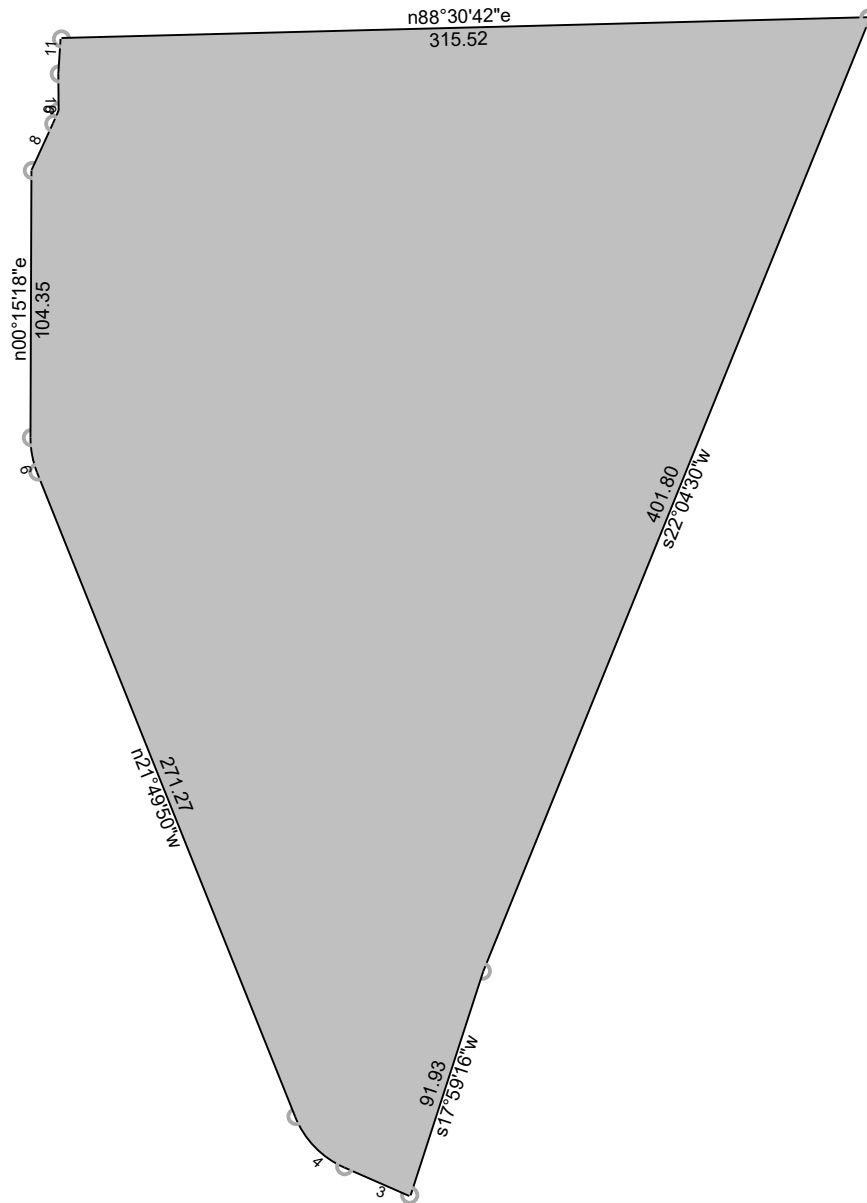
File: E 63rd Ave.ndp

12/18/2024

Tract 1: 0.7685 Acres (33476 Sq. Feet), Closure: $s81.0741w$ 0.02 ft. (1/112690), Perimeter=1766 ft.

01 $n88.3042e$ 812.25
02 $s03.3205w$ 13.57
03 $s00.2057e$ 14.45
04 $s24.1832w$ 5.59
05 $s88.3042w$ 103.29
06 $s88.3042w$ 283.47
07 $s88.3042w$ 290.80

08 Lt, $r=10.00$, $\delta=081.3358$, $\text{arc}=14.24$, $\text{chord}=s47.4343w$ 13.06
09 Rt, $r=65.00$, $\delta=201.0331$, $\text{arc}=228.09$, $\text{chord}=n72.3131w$ 127.81



12/18/2024

Scale: 1 inch= 75 feet

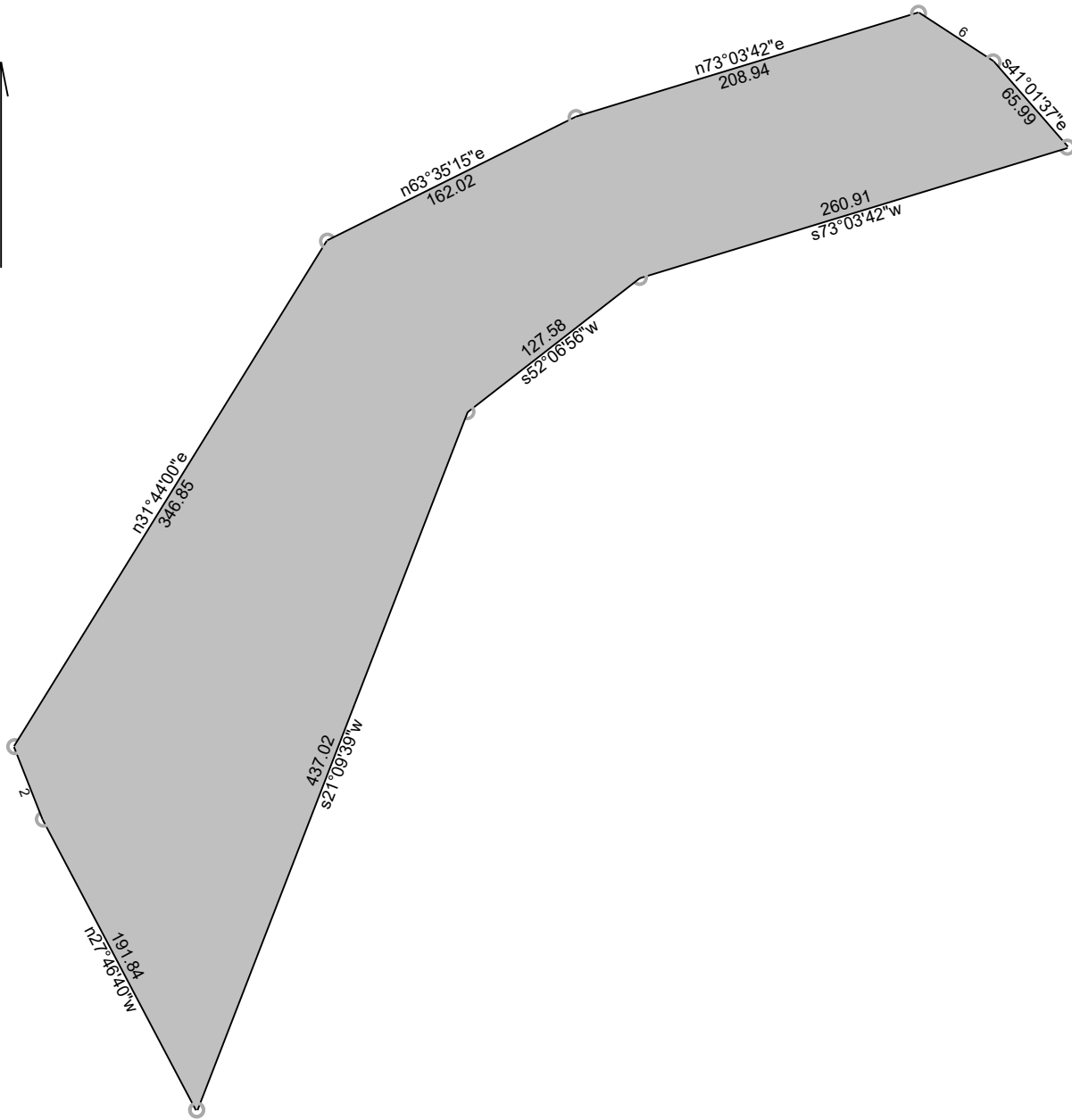
File: Tract A.ndp

Tract 1: 2.0429 Acres (88990 Sq. Feet), Closure: n03.1021e 0.01 ft. (1/104199), Perimeter=1308 ft.

01 s22.0430w 401.80	10 n00.2057w 14.45
02 s17.5916w 91.93	11 n03.3205e 13.57
03 n66.2052w 27.69	12 n88.3042e 315.52
04 Rt, r=36.00, delta=044.3102, arc=27.97, chord=n44.0521w 27.27	
05 n21.4950w 271.27	
06 Rt, r=36.00, delta=021.4435, arc=13.66, chord=n10.5733w 13.58	
07 n00.1518e 104.35	
08 n24.1832e 20.07	
09 n24.1832e 5.59	



11 n17.5916e 74.70
12 n17.5916e 58.28
13 n17.5916e 91.93
14 n22.0430e 401.80
15 n88.3155e 307.79



12/18/2024

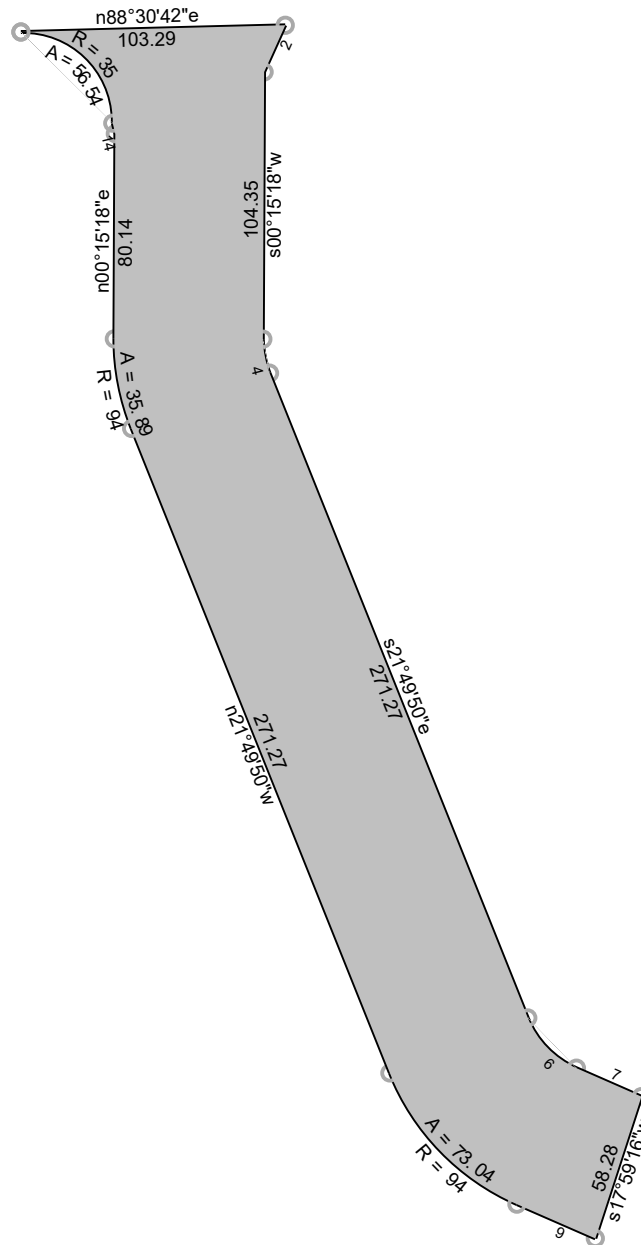
Scale: 1 inch= 100 feet

File: Tract C.ndp

Tract 1: 2.3000 Acres (100190 Sq. Feet), Closure: s21.3417w 0.01 ft. (1/139707), Perimeter=1899 ft.

01 n27.4640w 191.84
02 n21.3320w 45.54
03 n31.4400e 346.85
04 n63.3515e 162.02
05 n73.0342e 208.94
06 s56.5406e 51.87
07 s41.0137e 65.99

08 s73.0342w 260.91
09 s52.0656w 127.58
10 s21.0939w 437.02



12/18/2024

Scale: 1 inch= 75 feet

File: Tract D.ndp

Tract 1: 0.6731 Acres (29321 Sq. Feet), Closure: s35.0605e 0.01 ft. (1/86397), Perimeter=1181 ft.

01 n88.3042e 103.29	11 n21.4950w 271.27
02 s24.1832w 20.07	12 Rt, r=94.00, delta=021.5225, arc=35.89, chord=n10.5338w 35.67
03 s00.1518w 104.35	13 n00.1518e 80.14
04 Lt, r=36.00, delta=021.4435, arc=13.66, chord=s10.5733e 13.58	14 n13.3952w 4.17
05 s21.4950e 271.27	15 Lt, r=35.00, delta=092.3343, arc=56.54, chord=n45.1227w 50.59
06 Lt, r=36.00, delta=044.3102, arc=27.97, chord=s44.0521e 27.27	
07 s66.2052e 27.69	
08 s17.5916w 58.28	
09 n66.2052w 33.45	
10 Rt, r=94.00, delta=044.3102, arc=73.04, chord=n44.0521w 71.21	