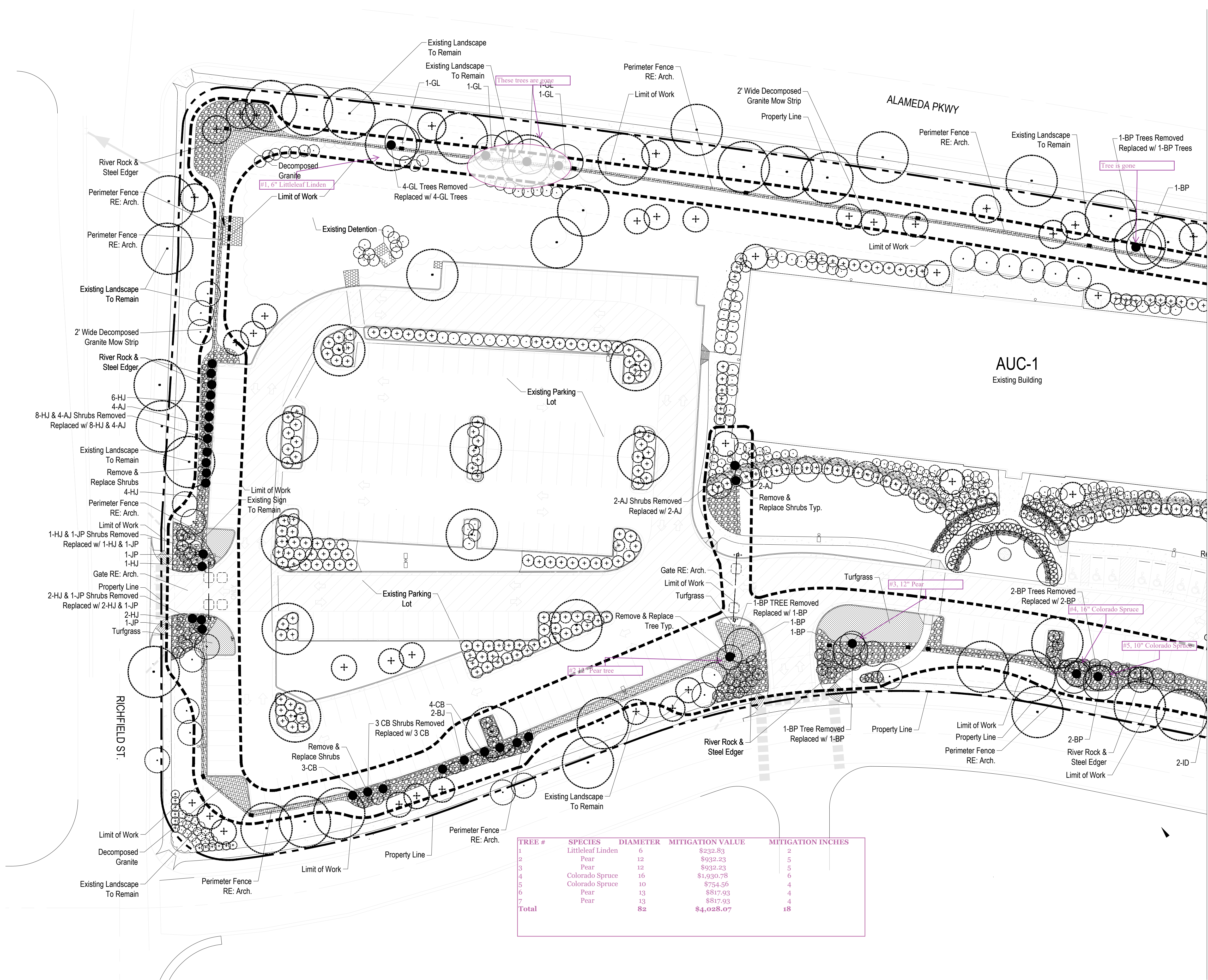


NORTHROP GRUMMAN BUILDING AUC-1
SITE PLAN AMENDMENT

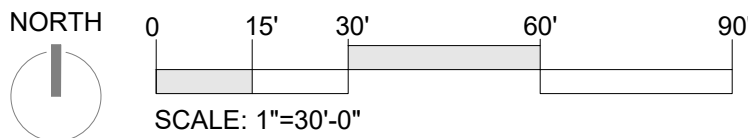
LOT 1, BLOCK 1 SHEA CENTER SUBDIVISION FILING NO. 1
CITY OF AURORA, ARAPAHOE COUNTY, STATE OF COLORADO
A PART OF THE NORTH 1/2 OF SECTION 16, T.4 S, R.66 W. OF THE 6TH P.M.
8.133 ACRES



LANDSCAPE LEGEND

- EXISTING TREES TO REMAIN: SEE TREE PROTECTION DETAIL
- EXISTING SHRUBS/GRASSES TO REMAIN
- EXISTING TREE/SHRUBS TO BE REMOVED & REPLACED
- REPLACED TREE: 4" CALIPER MINIMUM REFER TO PLANT NOTATION & PLANT LIST FOR REPLACEMENT
- REPLACED SHRUB: 5 GALLON MINIMUM REFER TO PLANT NOTATION & PLANT LIST FOR REPLACEMENT
- 1"-3" RIVER ROCK MATCH EXISTING & ADD WHERE NECESSARY
- DECOMPOSED GRANITE (CRUSHER FINES): 1/4" MINUS, GRAY
- TURFGRASS - REPLACE WHERE DAMAGED - MATCH EXISTING
- PROPOSED METAL PICKET FENCE, RE: ARCHITECTURAL DRAWINGS
- STEEL EDGER

NOTE: SEE SHEET 10A & 11A FOR PLANT LIST, AND ALL LANDSCAPE NOTES & DETAILS

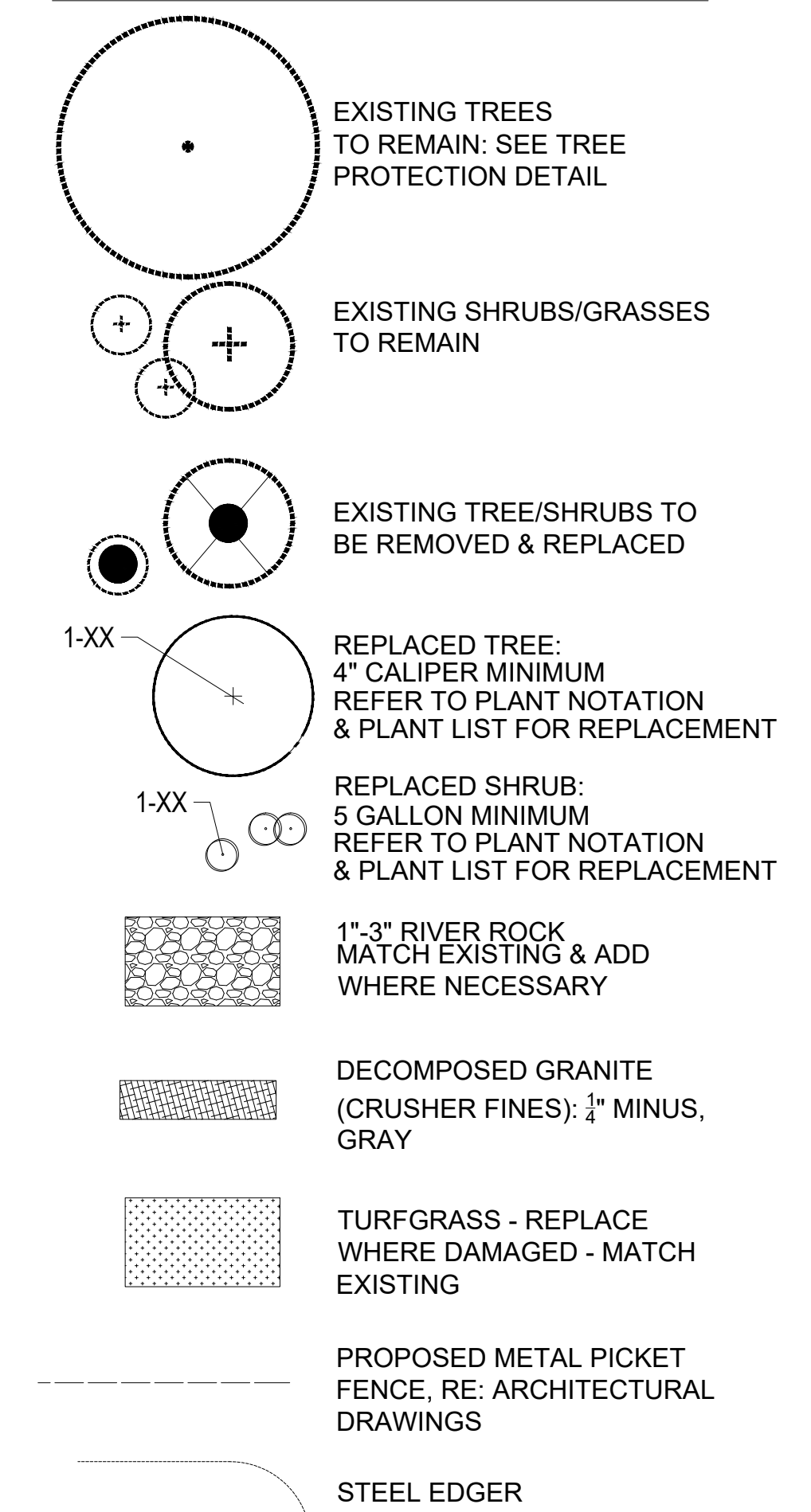


STACKLot


(urban design) (planning) (landscape architecture) (tech)
5639 SOUTH CURTICE STREET
LITTLETON, COLORADO 80120
303.883.2735
STACKLOT.COM

LOT 1, BLOCK 1 SHEA CENTER SUBDIVISION FILING NO. 1
CITY OF AURORA, ARAPAHOE COUNTY, STATE OF COLORADO
A PART OF THE NORTH 1/2 OF SECTION 16, T.4 S, R.66 W. OF THE 6TH P.M.
8.133 ACRES

LANDSCAPE LEGEND



NORTH



0 15' 30' 60' 90'

SCALE: 1"=30'-0"



558 Castle Pines Parkway
Suite B4-174
Castle Rock, Colorado 80108
Ph: 303-246-4943

NORIHROP GRUMMAN AUG-1
17455 E. EXPOSITION DR. AURORA CO 80017

SUBMITTAL

05.24.2022 PRICING SET

PROJECT TEAM	
CONTACT:	JF
DRAWN BY:	JF
REVIEWED BY:	DG
CONSULTANTS	
STACK LOT	

PROJECT DESCRIPTION

PROJECT NUMBER 21057.04

SHEET DESCRIPTION

LANDSCAPE PLAN

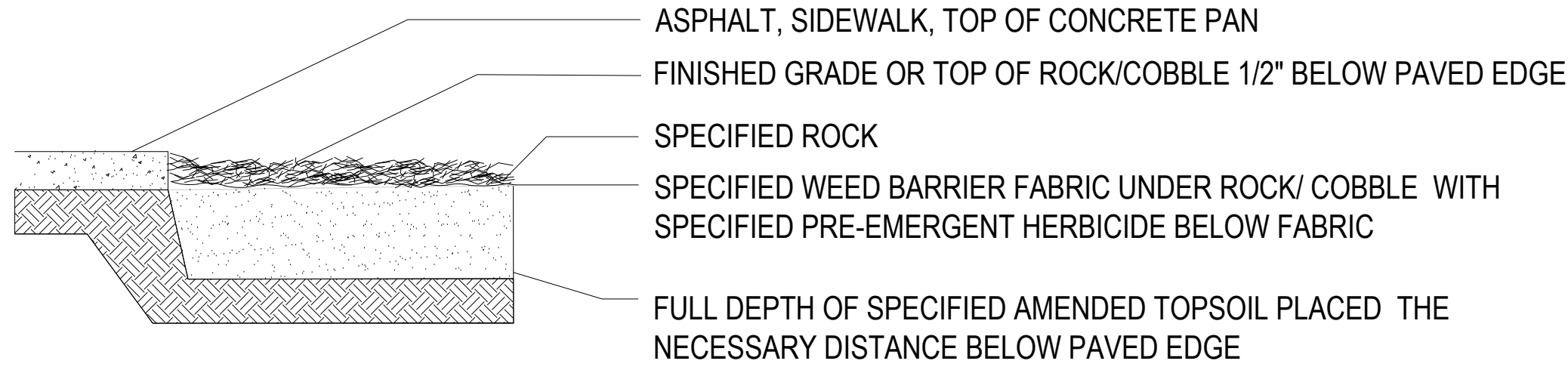
SHEET NUMBER

4 9A

NORTHROP GRUMMAN BUILDING AUC-1

SITE PLAN AMENDMENT

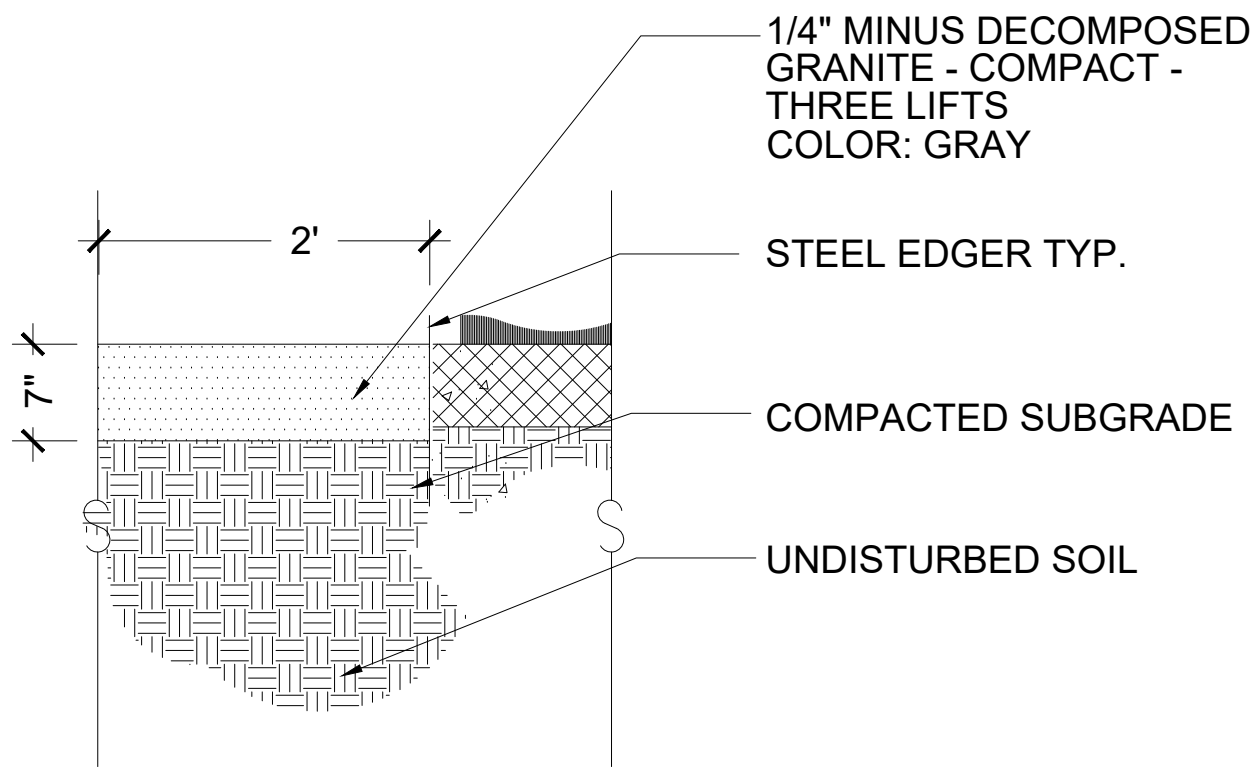
LOT 1, BLOCK 1 SHEA CENTER SUBDIVISION FILING NO. 1
CITY OF AURORA, ARAPAHOE COUNTY, STATE OF COLORADO
A PART OF THE NORTH 1/2 OF SECTION 16, T.4 S, R66 W. OF THE 6TH P.M.
8.133 ACRES



MULCH ADJACENT TO WALKS AND CURBS

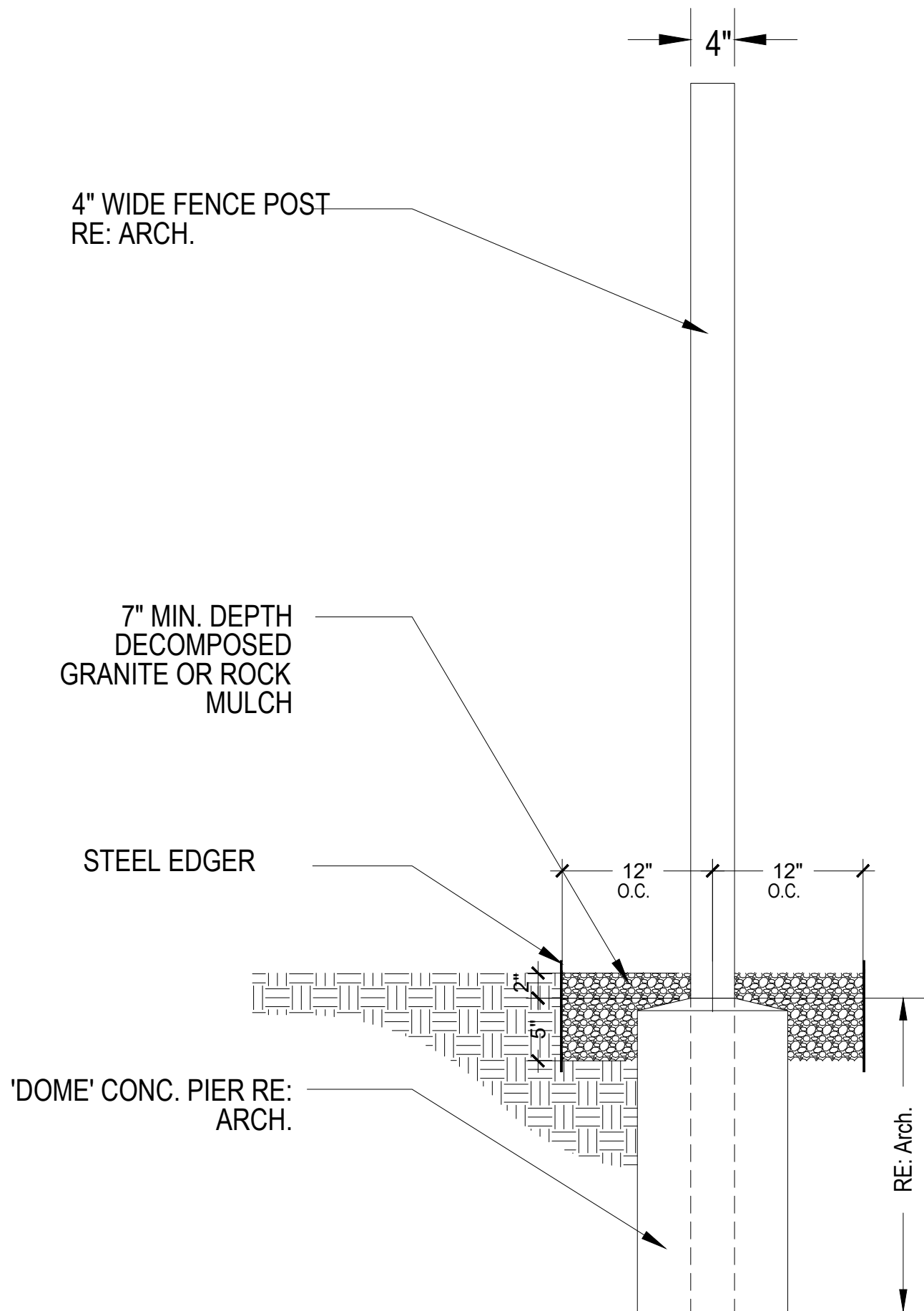
1 EDGE TREATMENT

NOT TO SCALE



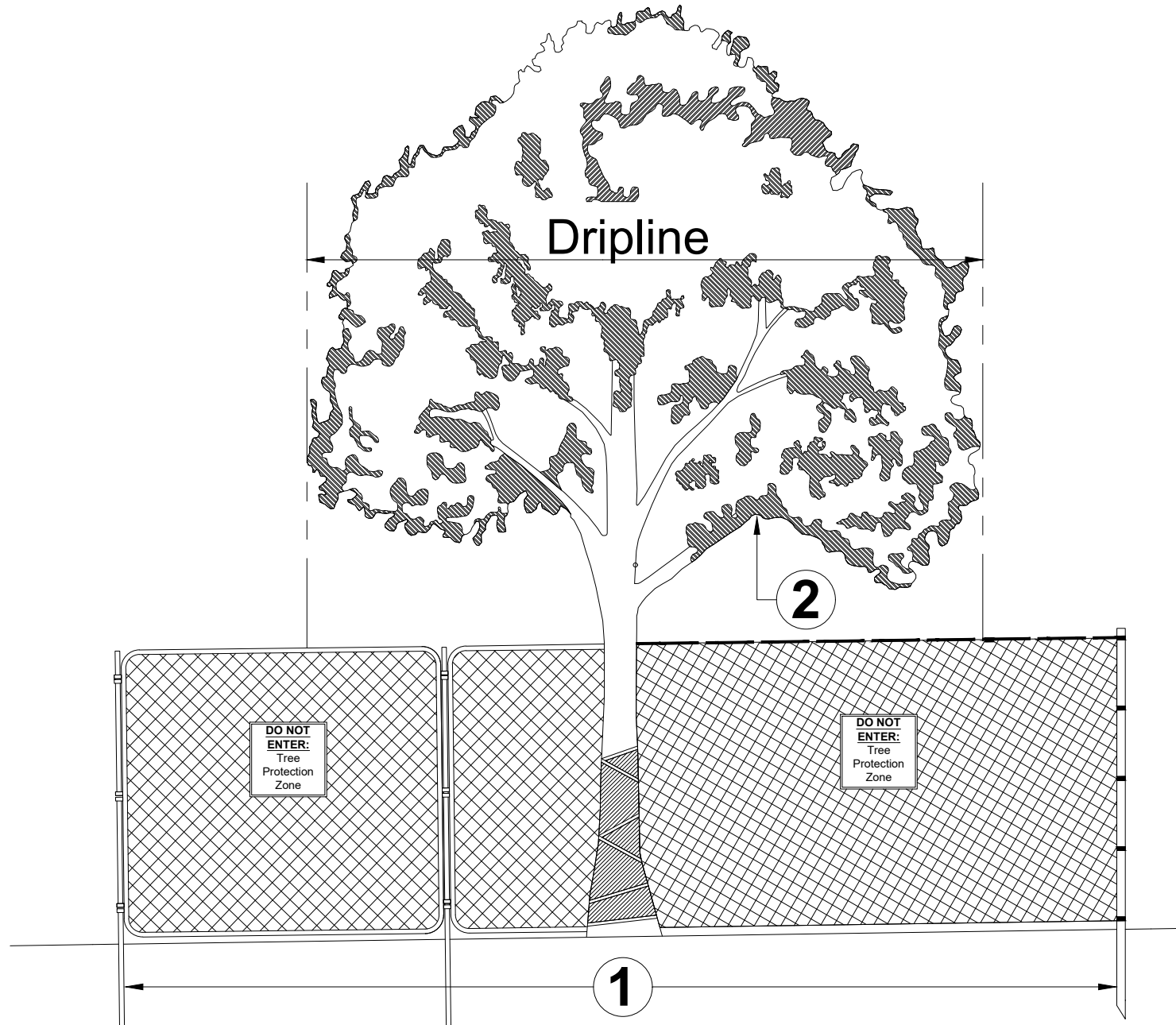
2 DECOMPOSED GRANITE MOW STRIP

NOT TO SCALE



3 MOW STRIP - FENCE POST

NOT TO SCALE



Area 1: Tree Protection Zone and Critical Root Zone Protection

The Tree Protection Zone (TPZ) shall be equal to dripline or 1.5 feet radially from the tree for every one inch of trunk diameter at breast height (DBH = 4.5' above soil line), whichever is greater.

- A. Min 6' in height steel chain link fence is required unless otherwise approved by the Landscape Architect. Steel chain link fence panels or rolls are acceptable.
- When chain link rolls are installed, it shall be fastened to heavy duty steel posts with safety caps at minimum five (5) attachment points with 12-gauge wire, including points at top and bottom. Weave wire through top of roll to eliminate sag.
 - Posts shall be driven 2' to 3' below grade and spaced at max. five to ten foot (5' - 10') o.c. intervals. Fencing must be kept taut at all times.
 - "Tree Protection Zone" signs shall be placed one (1) per each tree protection zone minimum or more per direction of Landscape Architect; maintain in the location and condition in which approved.
 - TPZ, including signage, shall be maintained in the location and condition in which approved.

The Critical Root Zone (CRZ) shall be equal to one foot radially from the tree for every one inch of trunk diameter at breast height.

Area 2: Canopy Protection

Contact Landscape Architect if potential for damage exists and/or if pruning is needed for any clearance issues prior to performing work.

Notes

- Tree Retention and Protection Specifications shall be followed throughout duration of work.
- After TPZ is approved:
 - TPZ shall not be resized, modified, removed, or altered in any manner without prior written approval. TPZ shall be maintained in place as approved until removal is authorized by Landscape Architect.
 - Entrance/access to the TPZ is not permitted without prior written approval from the Landscape Architect.
 - No materials, debris, equipment, or site amenities shall be stored within the TPZ without prior written approval from the Landscape Architect.
- While TPZ fencing is in place, trees shall be deep-root watered at an interval of once every two weeks when temperatures are at or above 40 degrees F. Trees shall be watered at the rate of twenty-five (25) gallons per inch DBH. Landscape Architect may ask for proof of watering.

4 TREE PROTECTION DETAIL

NOT TO SCALE

CITY STANDARD LANDSCAPE NOTES

PROVIDE A STATEMENT COMMITTING TO SOIL PREPARATION, LISTING TYPE AND QUANTITY OF AMENDMENT(S) TO BE APPLIED. FOUR CUBIC YARDS OF ORGANIC MATERIAL PER 1,000 SF OF AREA IS THE MINIMUM AMOUNT CURRENTLY REQUIRED TO OBTAIN A LAWN PERMIT.

PROVIDE A STATEMENT GENERALLY DESCRIBING ANY FREESTANDING LIGHTS. PROVIDE A STATEMENT GENERALLY DESCRIBING THE SURFACE MATERIAL OF WALKS, VEHICULAR DRIVES, PARKING LOTS, PLAZAS, ETC.

SHOW THIS NOTE, "ALL UTILITY EASEMENT SHALL REMAIN UNOBSTRUCTED AND FULLY ACCESSIBLE ALONG THEIR ENTIRE LENGTH FOR MAINTENANCE EQUIPMENT ENTRY."

SHOW THIS NOTE, "THE DEVELOPER, HIS SUCCESSORS AND ASSIGNS, SHALL BE RESPONSIBLE FOR INSTALLATION, MAINTENANCE AND REPLACEMENT OF ALL LANDSCAPING MATERIALS SHOWN OR INDICATED ON THE APPROVED SITE PLAN OR LANDSCAPE PLAN ON FILE IN THE PLANNING DEPARTMENT. ALL LANDSCAPING WILL BE INSTALLED AS DELINEATED ON THE PLAN, PRIOR TO ISSUANCE OF CERTIFICATES OF OCCUPANCY."

SHOW THIS NOTE, "ALL LANDSCAPED AREAS AND PLANT MATERIAL, EXCEPT FOR NON-IRRIGATED NATIVE, RESTORATIVE, AND DRYLAND GRASS AREAS THAT COMPLY WITH REQUIREMENTS FOUND IN SEC. 146-1429 AND/OR SEC. 146-1435 MUST BE WATERED BY AN AUTOMATIC UNDERGROUND IRRIGATION SYSTEM. IRRIGATION SYSTEM DESIGN, INSTALLATION, OPERATION, AND MAINTENANCE SHALL CONFORM TO REQUIREMENTS FOUND IN THE CITY OF AURORA IRRIGATION ORDINANCE."

GENERAL LANDSCAPE NOTES

IN ADDITION TO THE REQUIRED STANDARD LANDSCAPE NOTES TO BE PROVIDED ABOVE, THE APPLICANT MAY INCLUDE NOTES THAT DESCRIBE LANDSCAPE MATERIALS SUCH AS MULCHES, PAVERS, AND DECORATIVE PAVEMENT. NOTES THAT DESCRIBE TREE LAWN AND RESIDENTIAL SINGLE-FAMILY DETACHED LOT LANDSCAPE RESPONSIBILITIES MAY BE INCLUDED. NOTES GIVING CONTRACTORS FREEDOM TO MAKE SUBSTITUTIONS AND FIELD CHANGES WITHOUT PRIOR CITY APPROVAL ARE NOT PERMITTED.

SUBMITTAL

05.24.2022

PRICING SET

PROJECT TEAM

CONTACT: JF
DRAWN BY: JF
REVIEWED BY: DG

CONSULTANTS

STACK LOT

PROJECT DESCRIPTION

PERIMETER FENCING

PROJECT NUMBER

21057.04

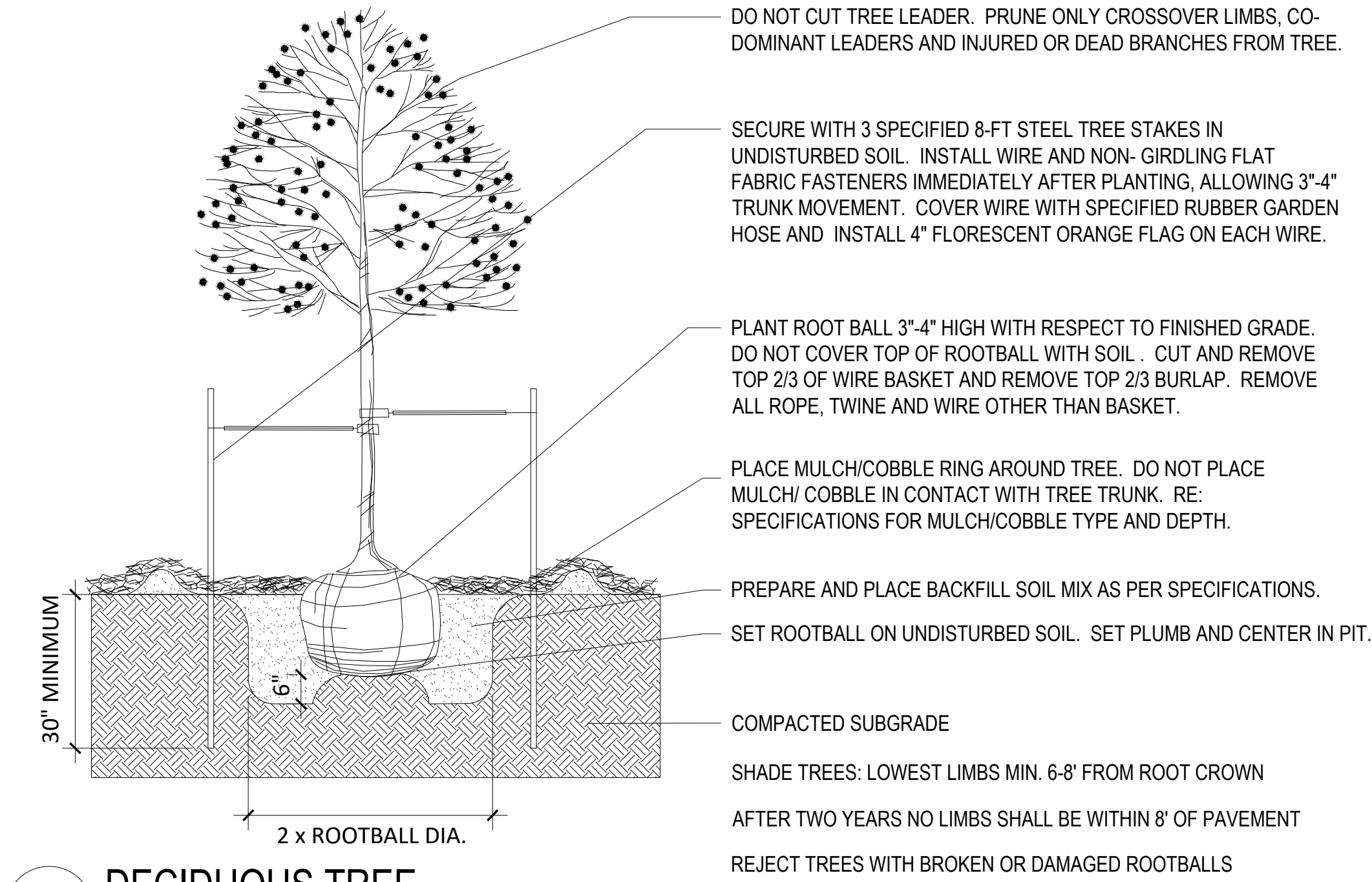
SHEET DESCRIPTION

LANDSCAPE NOTES & DETAILS

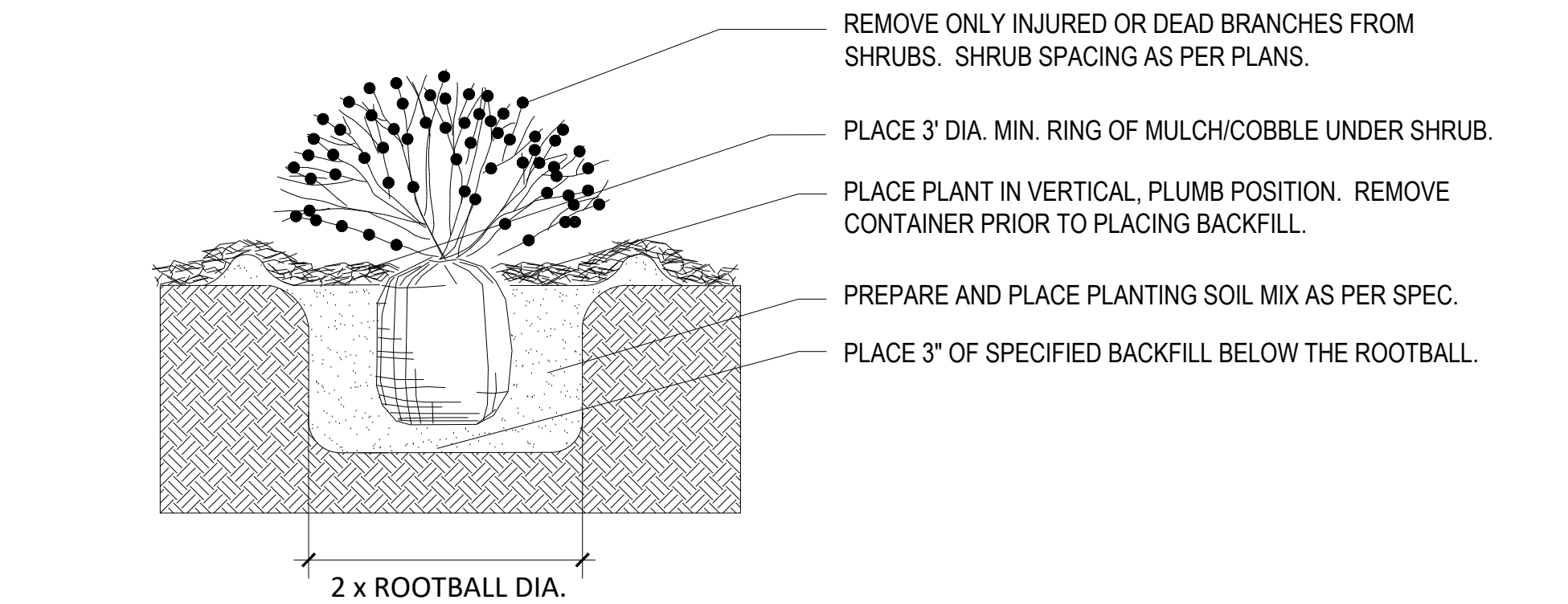
SHEET NUMBER

NORTHROP GRUMMAN BUILDING AUC-1
SITE PLAN AMENDMENT

LOT 1, BLOCK 1 SHEA CENTER SUBDIVISION FILING NO. 1
CITY OF AURORA, ARAPAHOE COUNTY, STATE OF COLORADO
A PART OF THE NORTH 1/2 OF SECTION 16, T.4 S, R66 W. OF THE 6TH P.M.
8.133 ACRES



1 DECIDUOUS TREE



2 SHRUB PLANTING

NOT TO SCALE

AUC-1 REPLACEMENT PLANT LIST

QNTY. TO BE REMOVED	QNTY. TO BE REPLACED	SYM.	COMMON/BOTANICAL NAME	INSTALLED SIZE	COND.
TREES					
4	4	GL	GREENSPIRE LINDEN Tilia cordata 'Greenspire'	4" CAL. SINGLE TRUNK	B & B
7	7	BP	BRADFORD PEAR Pyrus Calleryana 'Bradford'	4" CAL. SINGLE TRUNK	B & B
1	1	SLH	SKYLINE HONEYLOCUST Gleditsia Tricanthos Inermis 'Skyline'	4" CAL. SINGLE TRUNK	B & B
SHRUBS					
11	11	HJ	HUGHES JUNIPER Juniperus Sabina 'Hughes'	5 GAL.	CONT.
10	10	AJ	ARMSTRONG JUNIPER Juniperus Chinensis 'Armstrong'	5 GAL.	CONT.
4	4	JP	JACKMANS POTENTILLA Potentilla Fruticosa 'Jackmanni'	5 GAL.	CONT.
1	1	GFS	GOLD FLAME SPIREA Spirea Japonica 'Gold Flame'	5 GAL.	CONT.
7	7	CB	COLUMNAR BUCKTHORN Rhamnus Frangula 'Columnaris'	5 GAL.	CONT.
2	2	TLS	THREE LEAF SUMAC Rhus Triloba	5 GAL.	CONT.
2	2	BJ	BUFFALO JUNIPER Juniperous sabina 'Buffalo'	5 GAL.	CONT.
2	2	ID	ISANTI REDTWIG DOGWOOD Cornus Sericea 'Isanti'	5 GAL.	CONT.

PLANT REPLACEMENT NOTES

- CONTRACTOR SHALL COMPLY WITH TREE PROTECTION DETAIL ON SHEET L3.0 DURING CONSTRUCTION AND INSTALLATION.
- ALL EXISTING TREES AND SHRUBS SHALL BE REPLACED PER THE TREE REPLACEMENT PLANT LIST AND AS INDICATED ON THE PLANS.
- DURING LANDSCAPE AND FENCE / GATE INSTALLATION, FIELD ADJUSTMENTS TO THE PLANT MATERIAL INSTALLATION MAY BE NECESSARY. THERE MAY BE EXISTING TREES AND SHRUBS THAT WILL NEED TO BE REPLACED THAT ARE NOT INDICATED ON THESE LANDSCAPE PLANS. ALL SHRUBS AND TREES THAT WILL NEED TO BE REPLACED DUE TO FIELD ADJUSTMENTS, CONTRACTOR SHALL NOTIFY THE OWNER AND LANDSCAPE ARCHITECT. LANDSCAPE ARCHITECT SHALL PROVIDE QUANTITY AND REPLACEMENT SPECIES FOR THESE FIELD ADJUSTMENTS.