

Durable Materials



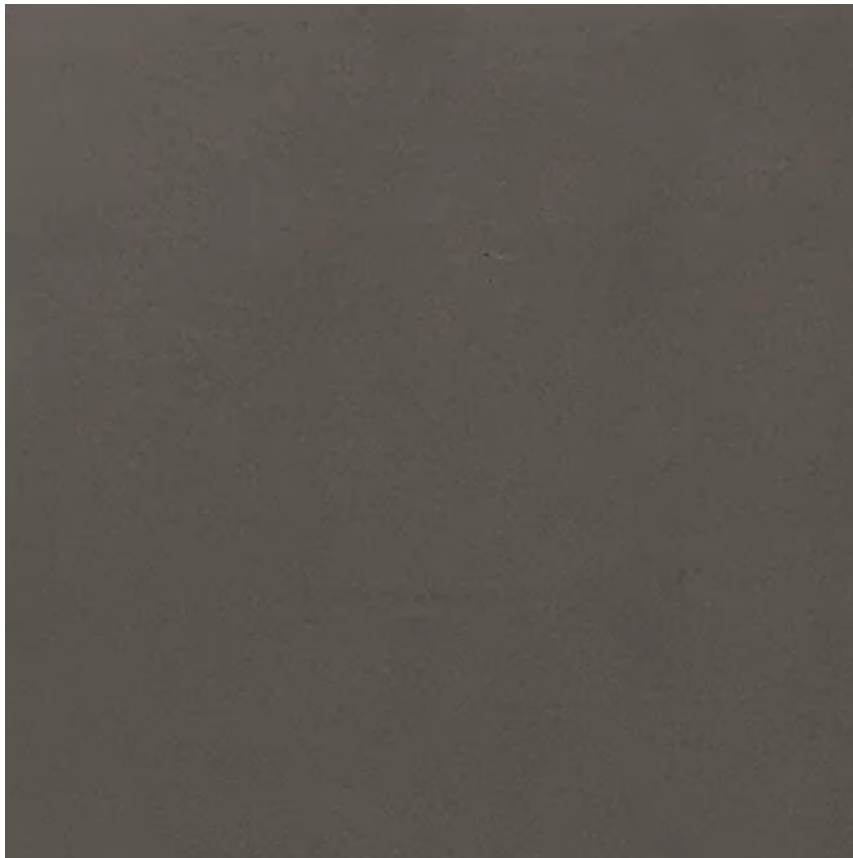
Modular Field Brick, Running Bond - Color 1 (Light)  
Summit Brick Co., Light Buff, Grain Texture



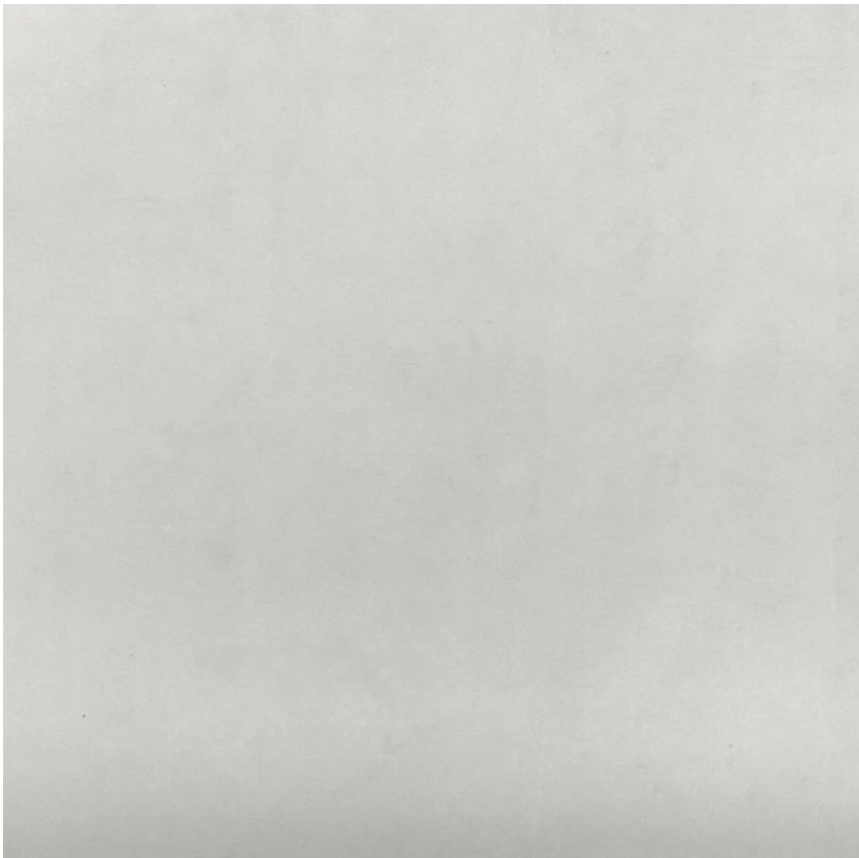
Modular Field Brick, Running Bond - Color 2 (Dark)  
Summit Brick Co., Bamboo, Grain Texture



Fiber Cement Panel, Light  
Allura Panel, Cool Charcoal, Smooth



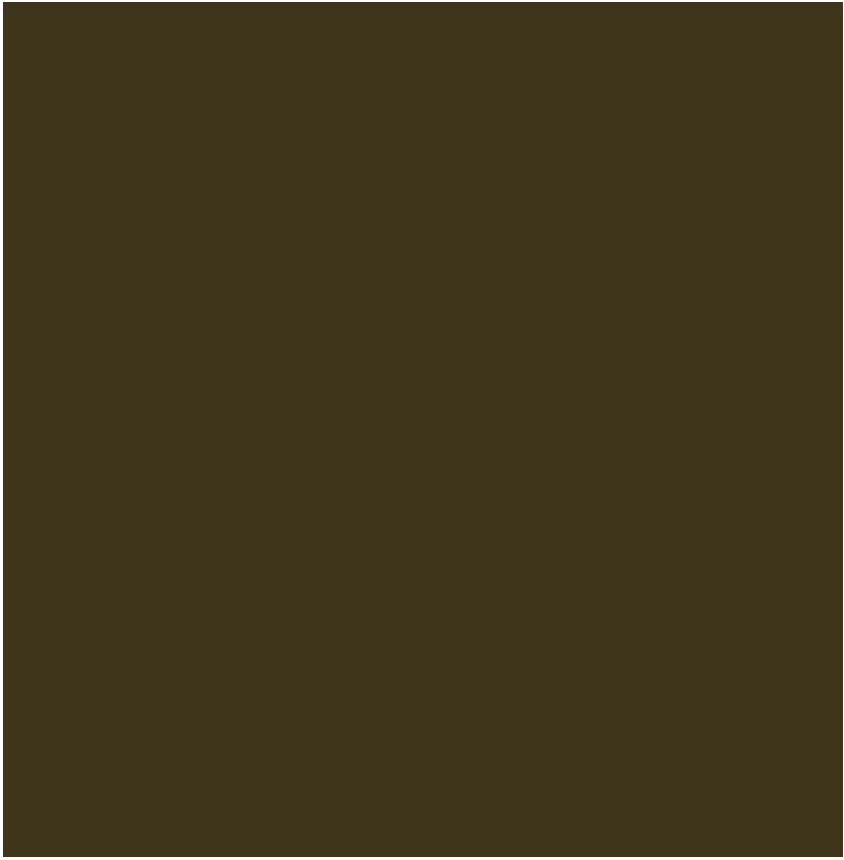
Fiber Cement Panel, Dark  
Allura Panel, Bark, Smooth



Fiber Cement Panel, Accent  
Allura Panel, Snow, Smooth



Metal Panel  
Pac-Clad, Slate Gray



Metal Panel  
Pac-Clad, Dark Bronze

Exterior Material Take-Offs

Exterior Wall Materials Summary					
North Block					
	Durable Materials				
Material	Brick Masonry	Fiber Cement Panel	Glazing	Metal Panel	
North	7,855	11,007	4,797	—	23,659
South	—	15,338	4,997	3,829	24,164
West	3,091	8,578	3,541	1,322	16,532
East	1,274	5,134	2,212	2,086	10,707
Ventilation alley - north	—	4,559	115	—	4,674
Ventilation alley - west	—	6,782	115	—	6,898
Ventilation alley - east	—	6,380	115	—	6,496
Ventilation alley - south	—	991	58	—	1,049
Project Totals	12,221	68,769	15,951	7,237	94,179
	12.98%	62.40%	16.94%	7.68%	100.00%

South Block					
	Durable Materials				
Material	Brick Masonry	Fiber Cement Panel	Glazing	Metal Panel	
North	7,279	7,187	4,948	4,566	23,980
South	—	15,701	4,517	3,049	23,266
West	2,333	8,528	4,162	1,591	16,615
East	2,277	9,844	3,433	1,286	16,839
Courtyard - north	1,447	7,223	2,049	—	10,719
Courtyard - west	—	2,719	1,273	1,670	5,662
Courtyard - east	—	2,711	1,210	1,628	5,550
Courtyard - south	—	8,598	2,049	—	10,648
Project Totals	13,335	62,512	23,641	13,790	113,278
	11.77%	55.18%	20.87%	12.17%	100.00%