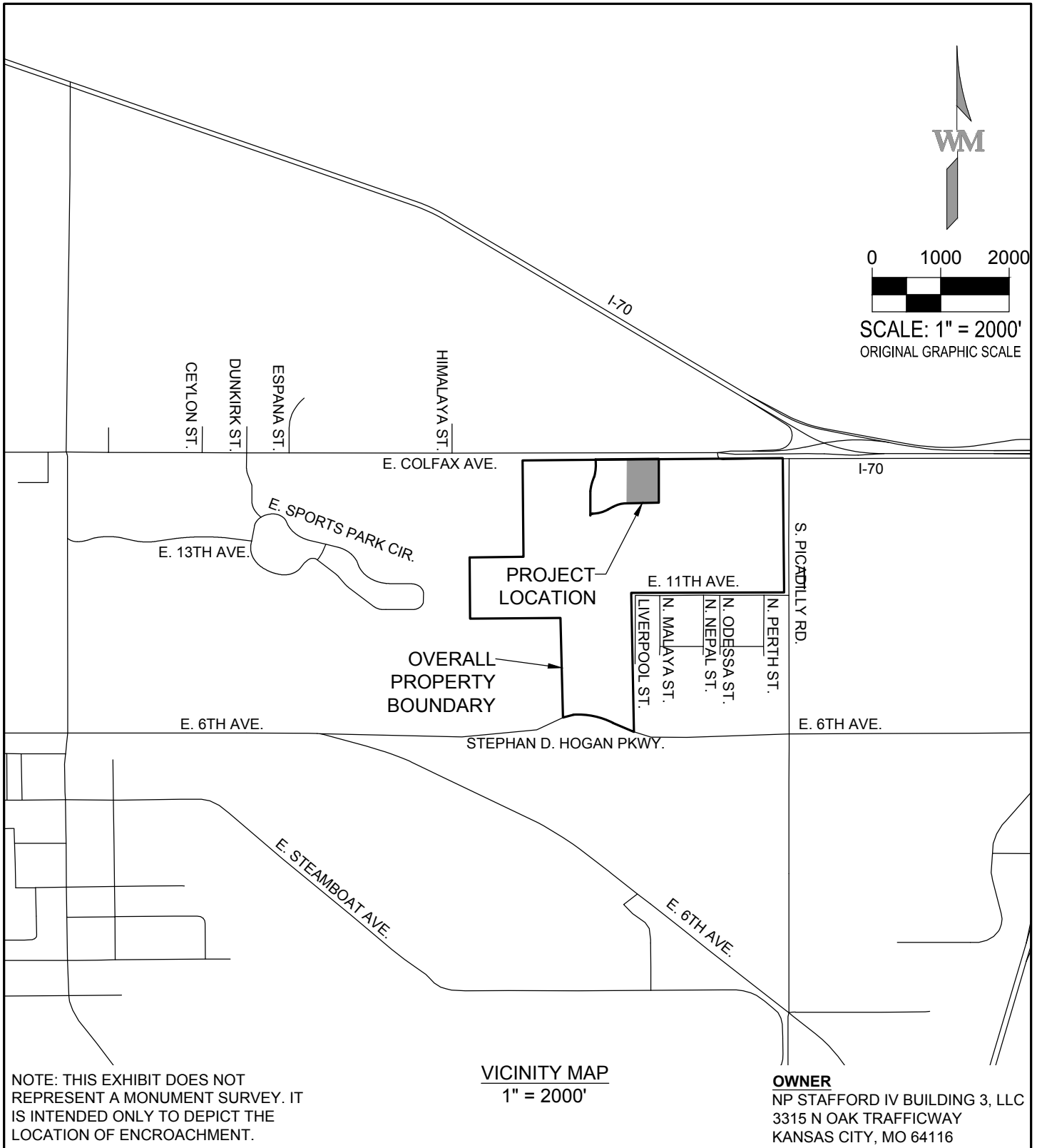


EXHIBIT A ILLUSTRATION

SHEET 1 OF 3

EDN #222049



CITY OF AURORA, COLORADO

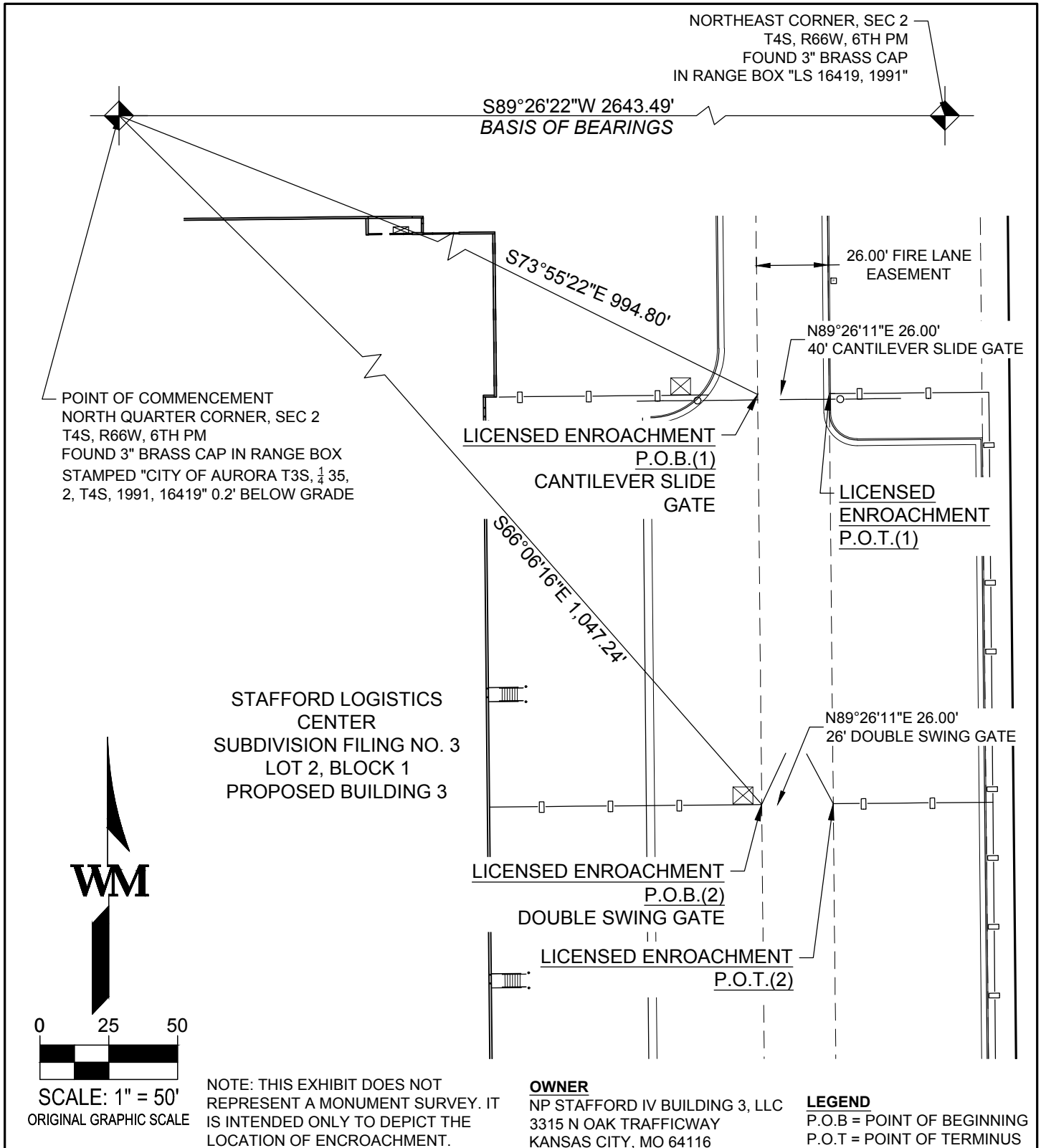
BY: TL	SCALE 1"=2000'	R. O. W. File No.
Ck'd By: JC	DATE: 03/27/2025	Job No. DCS20-4033

A LICENSE AGREEMENT FOR STORM SEWER
A PORTION OF THE NORTH HALF OF SECTION 2, T4S, R66W OF
THE 6TH P.M. CITY OF AURORA, COUNTY OF ARAPAHOE, STATE
OF COLORADO
LOT 2, BLOCK 1, STAFFORD LOGISTICS CENTER
SUBDIVISION FILING NO. 3

EXHIBIT A ILLUSTRATION

SHEET 2 OF 3

EDN #222049



CITY OF AURORA, COLORADO

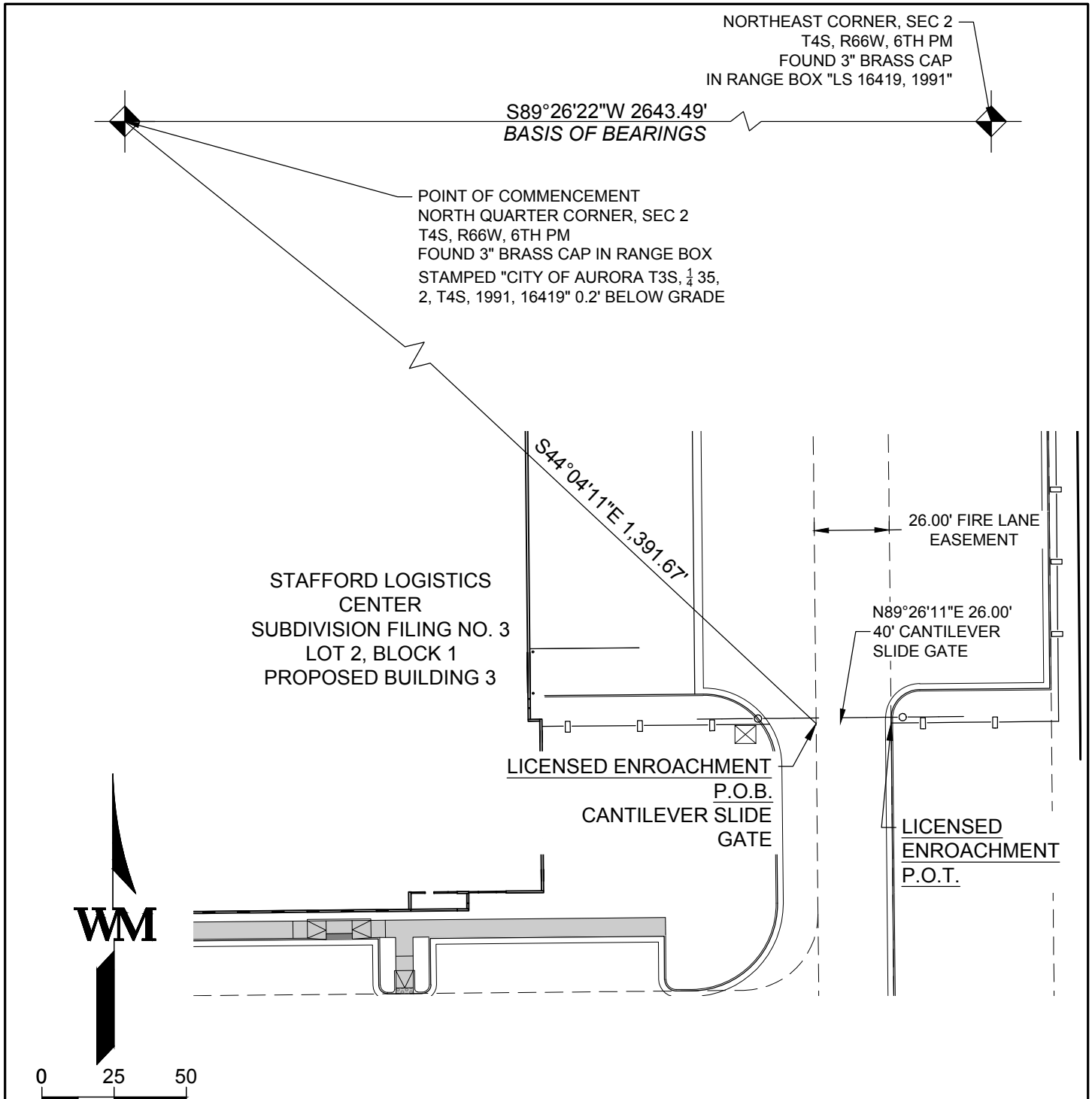
BY: TL	SCALE 1"=50'	R. O. W. File No.
Ck'd By: JC	DATE: 03/27/2025	Job No. DCS20-4033

A LICENSE AGREEMENT FOR STORM SEWER
A PORTION OF THE NORTH HALF OF SECTION 2, T4S, R66W OF
THE 6TH P.M. CITY OF AURORA, COUNTY OF ARAPAHOE, STATE
OF COLORADO
LOT 2, BLOCK 1, STAFFORD LOGISTICS CENTER
SUBDIVISION FILING NO. 3

EXHIBIT A ILLUSTRATION

SHEET 3 OF 3

EDN #222049



SCALE: 1" = 50'
ORIGINAL GRAPHIC SCALE

NOTE: THIS EXHIBIT DOES NOT
REPRESENT A MONUMENT SURVEY. IT
IS INTENDED ONLY TO DEPICT THE
LOCATION OF ENCROACHMENT.

OWNER

NP STAFFORD IV BUILDING 3, LLC
3315 N OAK TRAFFICWAY
KANSAS CITY, MO 64116

LEGEND

P.O.B = POINT OF BEGINNING
P.O.T = POINT OF TERMINUS

CITY OF AURORA, COLORADO

A LICENSE AGREEMENT FOR STORM SEWER
A PORTION OF THE NORTH HALF OF SECTION 2, T4S, R66W OF
THE 6TH P.M. CITY OF AURORA, COUNTY OF ARAPAHOE, STATE
OF COLORADO
LOT 2, BLOCK 1, STAFFORD LOGISTICS CENTER
SUBDIVISION FILING NO. 3

BY: TL

SCALE 1"=50'

R. O. W. File No.

Ck'd By: JC

DATE: 03/27/2025

Job No. DCS20-4033