

PROJECT DESCRIPTION

PHOTO SIMULATION

SHEET INDEX		
SHEET #	DESCRIPTION	REV #
T-1	SITE LOCATION	A
V-1	V-1 EXISTING TOWER LOOKING FROM NORTH	A
V-2	V-1 PROPOSED TOWER LOOKING FROM NORTH	A
V-3	V-2 EXISTING TOWER LOOKING FROM NORTH WEST	A
V-4	V-2 PROPOSED TOWER LOOKING FROM NORTH WEST	A
V-5	V-3 EXISTING TOWER LOOKING FROM WEST	A
V-6	V-3 PROPOSED TOWER LOOKING FROM WEST	A
V-7	V-4 EXISTING TOWER LOOKING FROM SOUTH WEST	A
V-8	V-4 PROPOSED TOWER LOOKING FROM SOUTH WEST	A



SITE ID:
COL01816
SITE NAME:
CO.HWY287_AND_TOWER

AT&T

1355 WEST UNIVERSITY DRIVE
MESA, AZ 85201



Trylon

1825 W. WALNUT HILL LANE, SUITE 120
IRVING, TEXAS 75038
1-855-669-5421

SUBMITTALS			
REV	DATE	DESCRIPTION	BY
A	01.21.25	ISSUED FOR REVIEW	KVM

PROJECT INFORMATION

SITE ID
COL01816

SITE NAME
CO.HWY287_AND_TOWER

LATITUDE
39.7388417°

LONGITUDE
-104.780069°

SITE ADDRESS
17700 E COLFAX AVE
AURORA, CO 80011

SHEET DESCRIPTION

SITE LOCATION

SHEET NO.

T-1



DISCLAIMER:
THIS PHOTOSIMULATION IS INTENDED AS A GRAPHICAL REPRESENTATION OF EXISTING AND PROPOSED SITE CONDITIONS BASED ON THE PROJECT/DRAWING PLANS. IT IS NOT INTENDED FOR CONSTRUCTION, ACTUAL, FINAL CONSTRUCTION MAY VARY.



REV	DATE	DESCRIPTION	BY
A	01.21.25	ISSUED FOR REVIEW	KVM

SITE_ID
COL01816

SITE_NAME
CO.HWY287_AND_TOWER

LATITUDE
39.7388417°

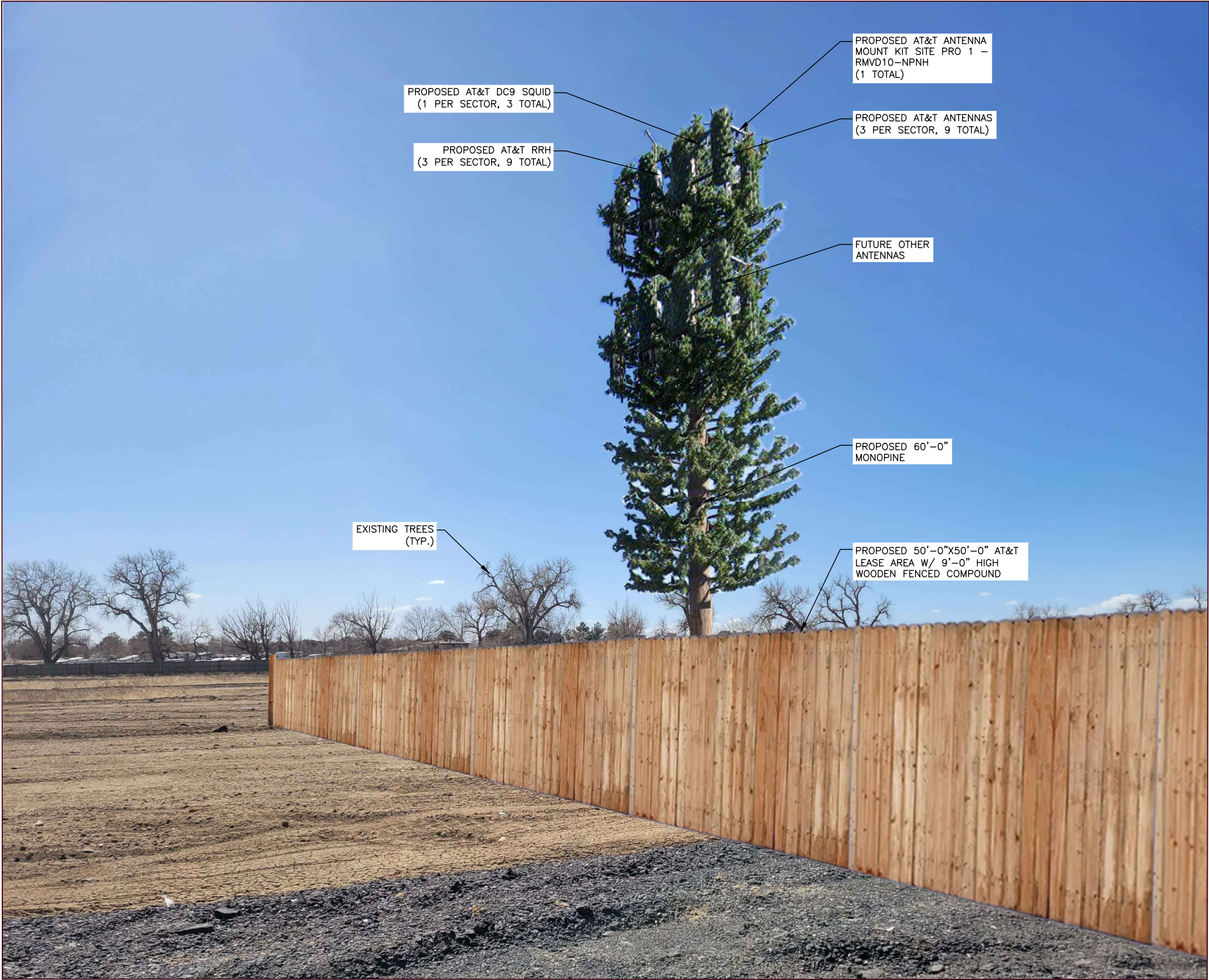
LONGITUDE
-104.780069°

SITE_ADDRESS
17700 E COLFAX AVE
AURORA, CO 80011

V-1 EXISTING TOWER
LOOKING FROM NORTH

V-1





PROPOSED AT&T DC9 SQUID
(1 PER SECTOR, 3 TOTAL)

PROPOSED AT&T RRH
(3 PER SECTOR, 9 TOTAL)

PROPOSED AT&T ANTENNA
MOUNT KIT SITE PRO 1 –
RMVD10–NPNH
(1 TOTAL)

PROPOSED AT&T ANTENNAS
(3 PER SECTOR, 9 TOTAL)

FUTURE OTHER
ANTENNAS

PROPOSED 60’–0”
MONOPINE

EXISTING TREES
(TYP.)

PROPOSED 50’–0”X50’–0” AT&T
LEASE AREA W/ 9’–0” HIGH
WOODEN FENCED COMPOUND



1355 WEST UNIVERSITY DRIVE
MESA, AZ 85201



1825 W. WALNUT HILL LANE, SUITE 120
IRVING, TEXAS 75038
1–855–669–5421

SUBMITTALS

REV	DATE	DESCRIPTION	BY
A	01.21.25	ISSUED FOR REVIEW	KVM

PROJECT INFORMATION

SITE ID
COL01816
SITE NAME
CO.HWY287_AND_TOWER
LATITUDE
39.7388417°
LONGITUDE
–104.780069°
SITE ADDRESS
17700 E COLFAX AVE
AURORA, CO 80011

SHEET DESCRIPTION

V–1 PROPOSED TOWER
LOOKING FROM NORTH

SHEET NO.

V–2





AT&T

1355 WEST UNIVERSITY DRIVE
MESA, AZ 85201





Trylon

1825 W. WALNUT HILL LANE, SUITE 120
IRVING, TEXAS 75038
1-855-669-5421

SUBMITTALS			
REV	DATE	DESCRIPTION	BY
A	01.21.25	ISSUED FOR REVIEW	KVM

PROJECT INFORMATION

SITE ID
COL01816

SITE NAME
CO.HWY287_AND_TOWER

LATITUDE
39.7388417°

LONGITUDE
-104.780069°

SITE ADDRESS
17700 E COLFAX AVE
AURORA, CO 80011

SHEET DESCRIPTION

V-2 EXISTING TOWER
LOOKING FROM NORTH WEST

SHEET NO.

V-3

1

V-3

VIEW 2-EXISTING TOWER LOOKING FROM NORTH WEST

NTS

SUBMITTALS

REV	DATE	DESCRIPTION	BY
A	01.21.25	ISSUED FOR REVIEW	KVM

PROJECT INFORMATION

SITE ID
COL01816

SITE NAME
CO.HWY287_AND_TOWER

LATITUDE
39.7388417°

LONGITUDE
-104.780069°

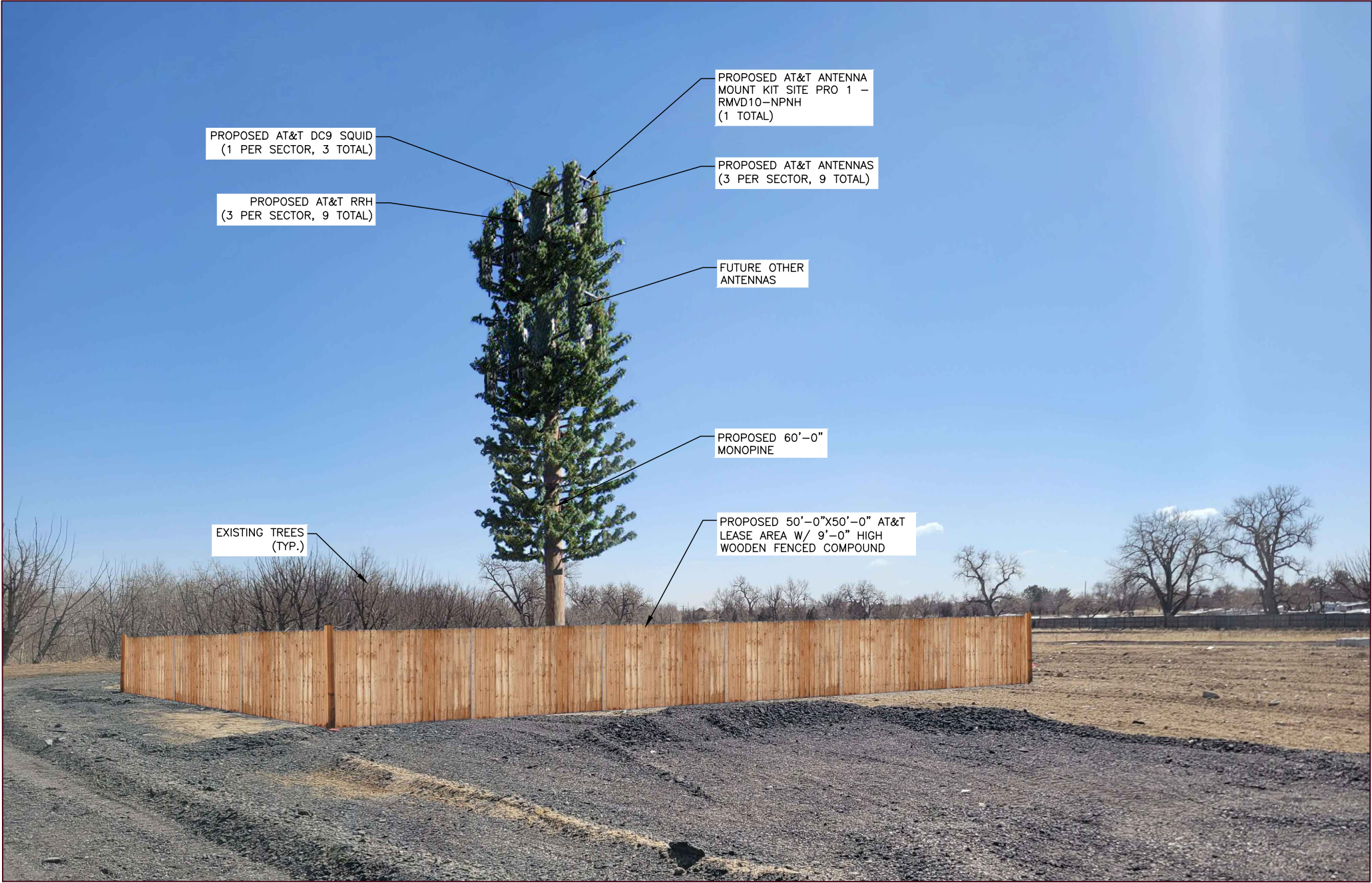
SITE ADDRESS
17700 E COLFAX AVE
AURORA, CO 80011

SHEET DESCRIPTION

V-2 PROPOSED TOWER
LOOKING FROM NORTH WEST

SHEET NO.

V-4



1
V-4
VIEW 2-PROPOSED TOWER LOOKING FROM NORTH WEST
NTS





AT&T

1355 WEST UNIVERSITY DRIVE
MESA, AZ 85201





Trylon

1825 W. WALNUT HILL LANE, SUITE 120
IRVING, TEXAS 75038
1-855-669-5421

SUBMITTALS			
REV	DATE	DESCRIPTION	BY
A	01.21.25	ISSUED FOR REVIEW	KVM

PROJECT INFORMATION

SITE ID
COL01816

SITE NAME
CO.HWY287_AND_TOWER

LATITUDE
39.7388417°

LONGITUDE
-104.780069°

SITE ADDRESS
17700 E COLFAX AVE
AURORA, CO 80011

SHEET DESCRIPTION

V-3 EXISTING LOOKING FROM WEST

SHEET NO.

V-5

1

V-5

VIEW 3-EXISTING TOWER LOOKING FROM WEST

NTS

SUBMITTALS

REV	DATE	DESCRIPTION	BY
A	01.21.25	ISSUED FOR REVIEW	KVM

PROJECT INFORMATION

SITE ID

COL01816

SITE NAME

CO.HWY287_AND_TOWER

LATITUDE

39.7388417°

LONGITUDE

-104.780069°

SITE ADDRESS

17700 E COLFAX AVE
AURORA, CO 80011

SHEET DESCRIPTION

V-3 PROPOSED LOOKING FROM WEST

SHEET NO.

V-6



VIEW 3-PROPOSED LOOKING FROM WEST
NTS





AT&T

1355 WEST UNIVERSITY DRIVE
MESA, AZ 85201





Trylon

1825 W. WALNUT HILL LANE, SUITE 120
IRVING, TEXAS 75038
1-855-669-5421

SUBMITTALS			
REV	DATE	DESCRIPTION	BY
A	01.21.25	ISSUED FOR REVIEW	KVM

PROJECT INFORMATION

SITE ID
COL01816

SITE NAME
CO.HWY287_AND_TOWER

LATITUDE
39.7388417°

LONGITUDE
-104.780069°

SITE ADDRESS
17700 E COLFAX AVE
AURORA, CO 80011

SHEET DESCRIPTION

V-3 EXISTING TOWER
LOOKING FROM SOUTH WEST

SHEET NO.

V-7

1

V-5

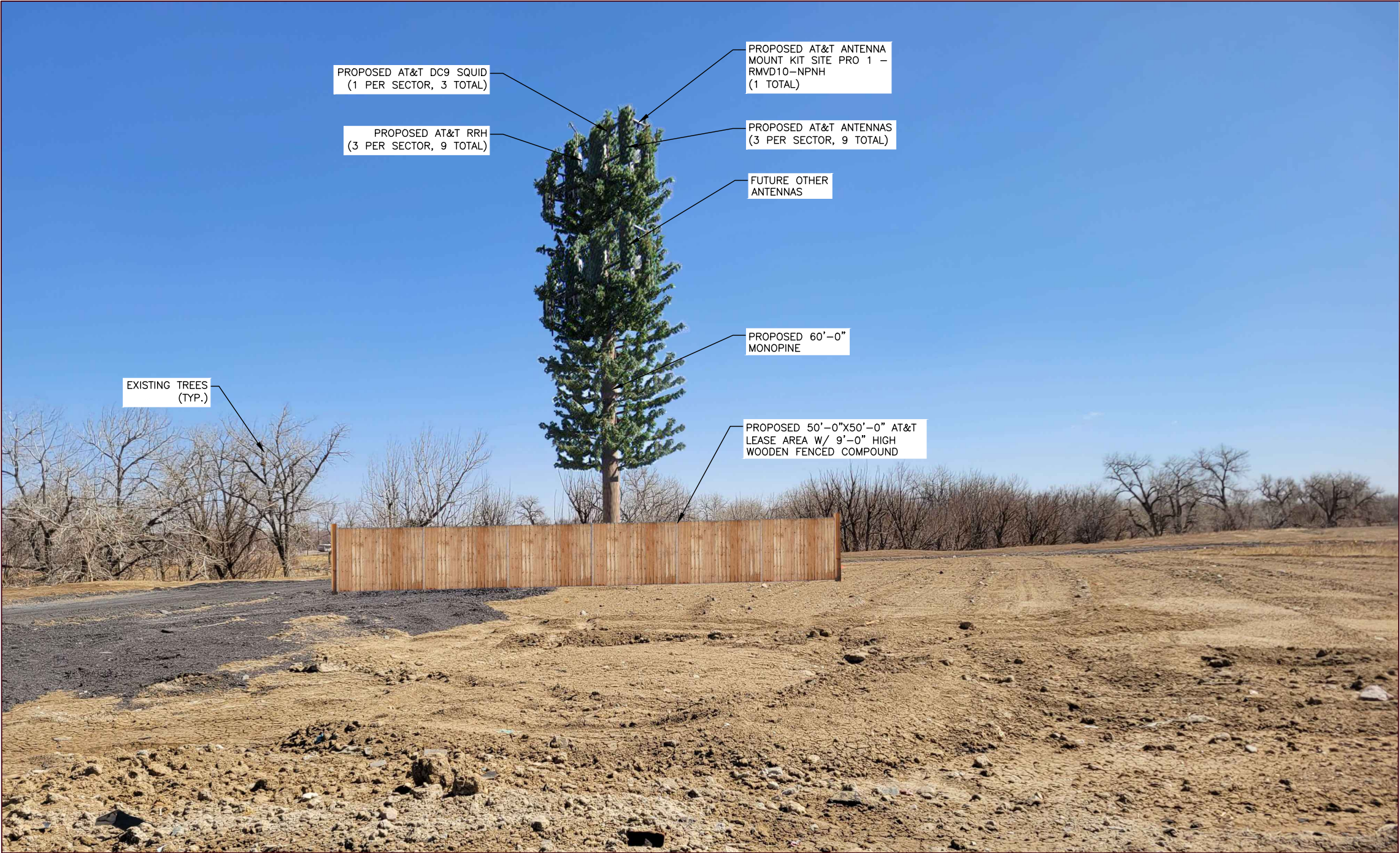
VIEW 4-EXISTING TOWER LOOKING FROM SOUTH WEST
NTS

SUBMITTALS			
REV	DATE	DESCRIPTION	BY
A	01.21.25	ISSUED FOR REVIEW	KVM

PROJECT INFORMATION
<div><div><div>SITE ID</div><div>COL01816</div></div><div><div>SITE NAME</div><div>CO.HWY287_AND_TOWER</div></div><div><div>LATITUDE</div><div>39.7388417°</div></div><div><div>LONGITUDE</div><div>-104.780069°</div></div><div><div>SITE ADDRESS</div><div>17700 E COLFAX AVE AURORA, CO 80011</div></div></div>

SHEET DESCRIPTION
<div>V-3 PROPOSED TOWER LOOKING FROM SOUTH WEST</div>

SHEET NO.
V-8



1

V-4

VIEW 4--PROPOSED TOWER LOOKING FROM SOUTH WEST

NTS