

KINGS POINT

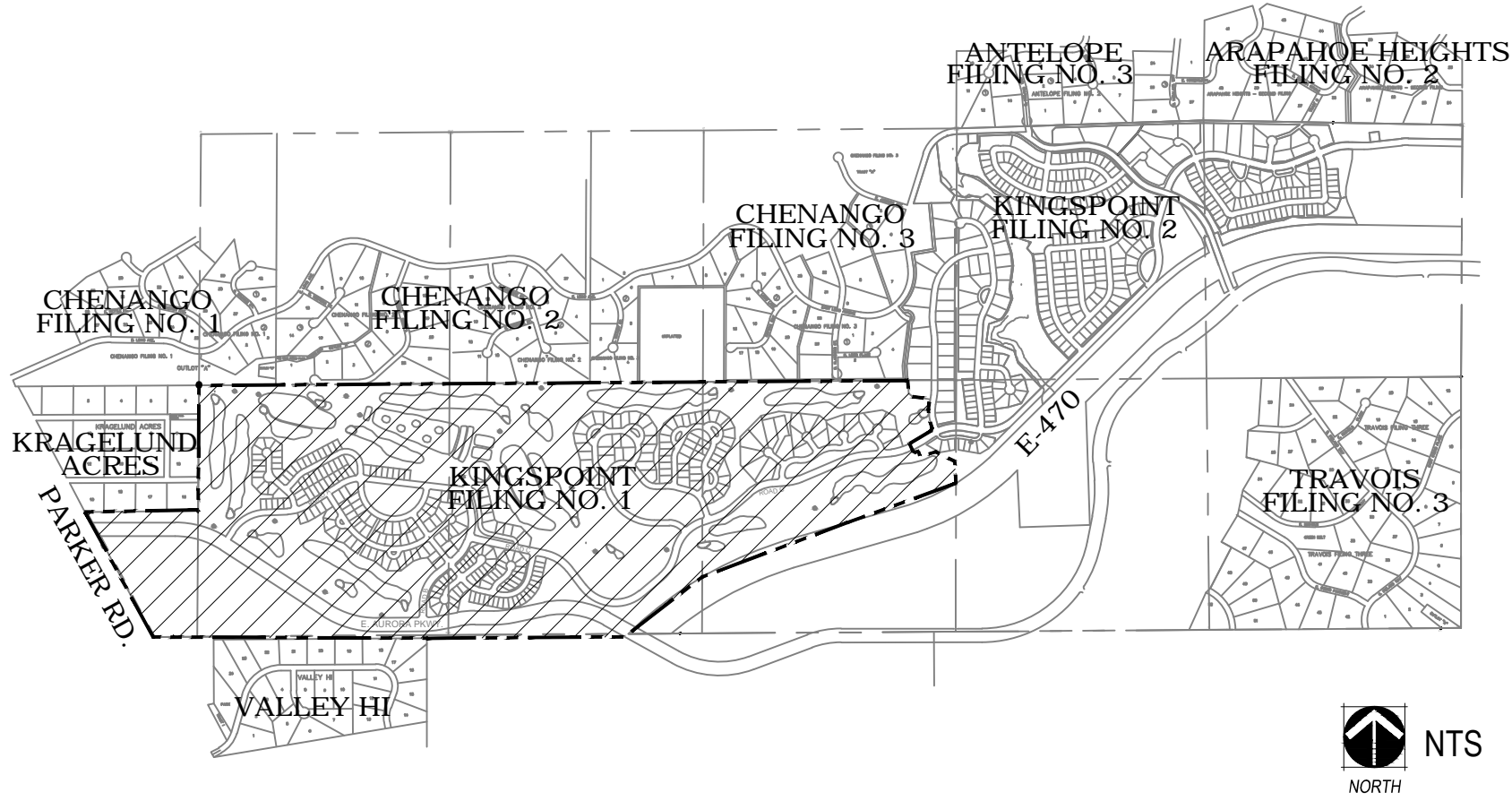
FILING 1 & 2 TREE PROTECTION PLAN

AURORA, COLORADO

SHEET INDEX

| | |
|-------|---|
| TPP-1 | COVER |
| TPP-2 | FILING 1 TREE PROTECTION PLAN |
| TPP-3 | FILING 1 TREE MITIGATION/ PROTECTION CHARTS |
| TPP-4 | FILING 2 TREE PROTECTION PLAN |
| TPP-5 | FILING 2 TREE PROTECTION PLAN |
| TPP-6 | FILING 2 TREE MITIGATION/ PROTECTION CHARTS |
| TPP-7 | FILING 2 TREE MITIGATION/ PROTECTION CHARTS |
| TPP-8 | TREE PROTECTION DETAILS |

VICINITY MAP



CITY OF AURORA APPROVALS

THIS TREE PROTECTION PLAN IS APPROVED IN ACCORDANCE WITH THE CITY OF AURORA BLACK FOREST ORDINANCE.

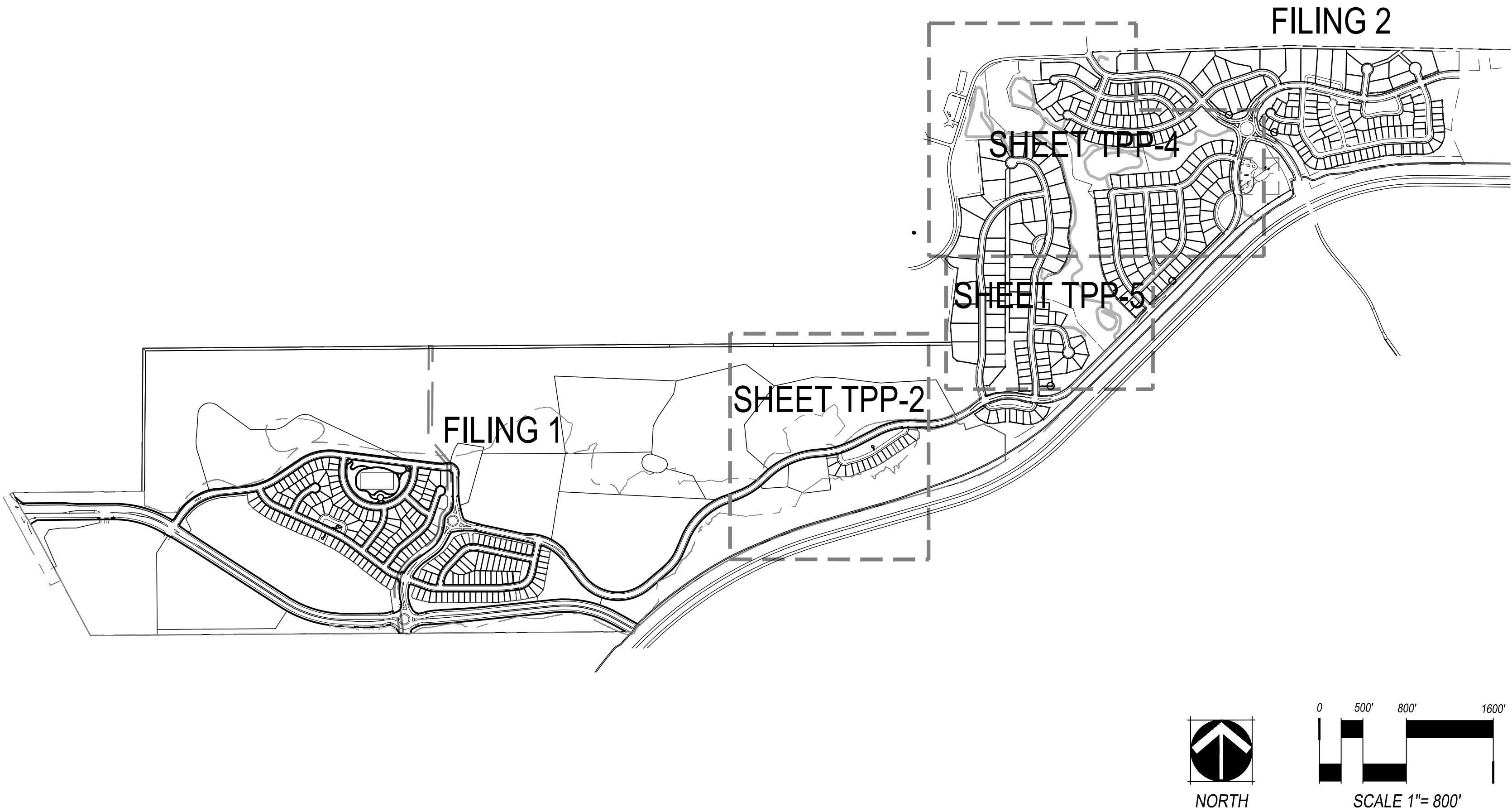
FORESTRY DIVISION: _____ DATE: _____

RECORDER'S CERTIFICATE:
Accepted for filing in the office of the Clerk and Recorder of _____, COLORADO AT _____
O'CLOCK _____ M,
THIS _____ DAY OF _____, AD, _____.

CLERK AND RECORDER: _____
DEPUTY: _____

REFER TO SHEET TPP 3 & 6 FOR SUMMARY TABLES AND OVERALL TREE PROTECTION PLAN SUMMARY.

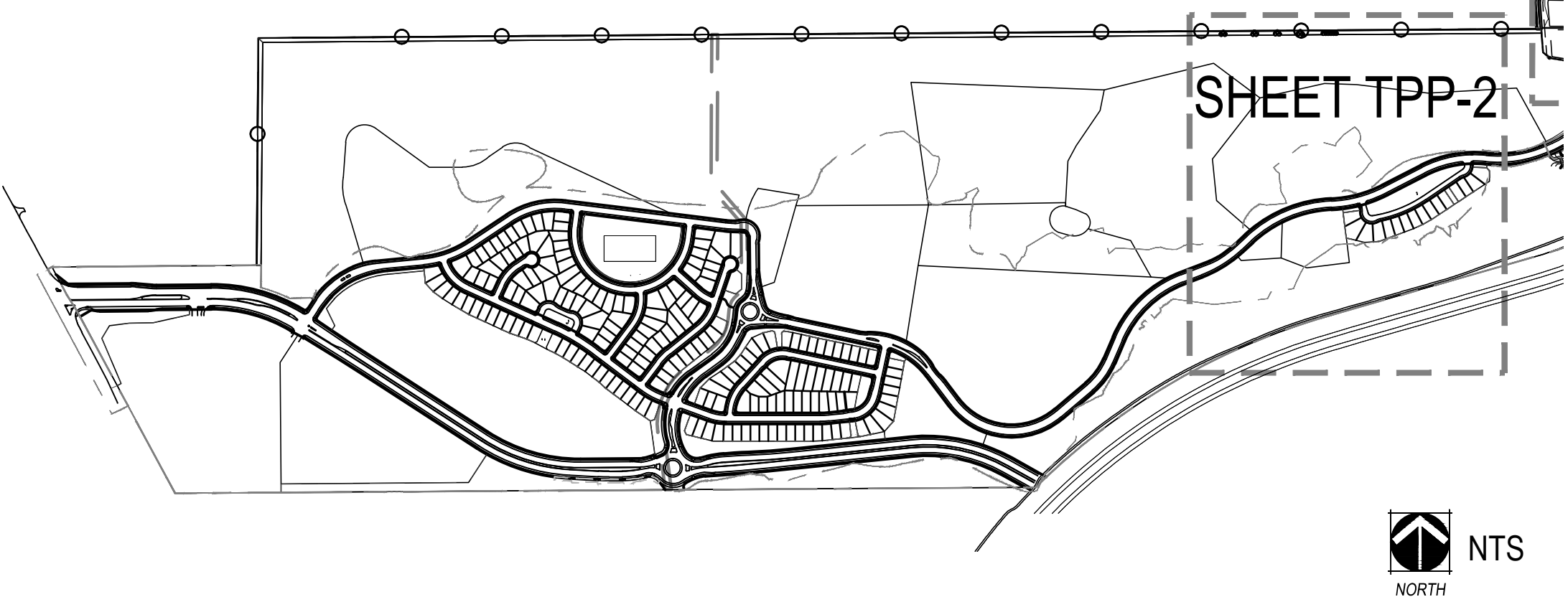
SHEET KEY MAP



TREE MITIGATION PLAN - FILING 1



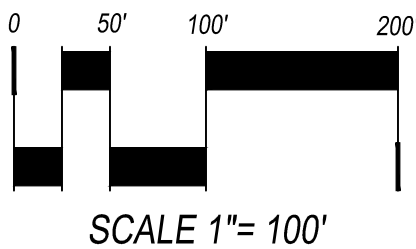
KEY MAP - FILING 1

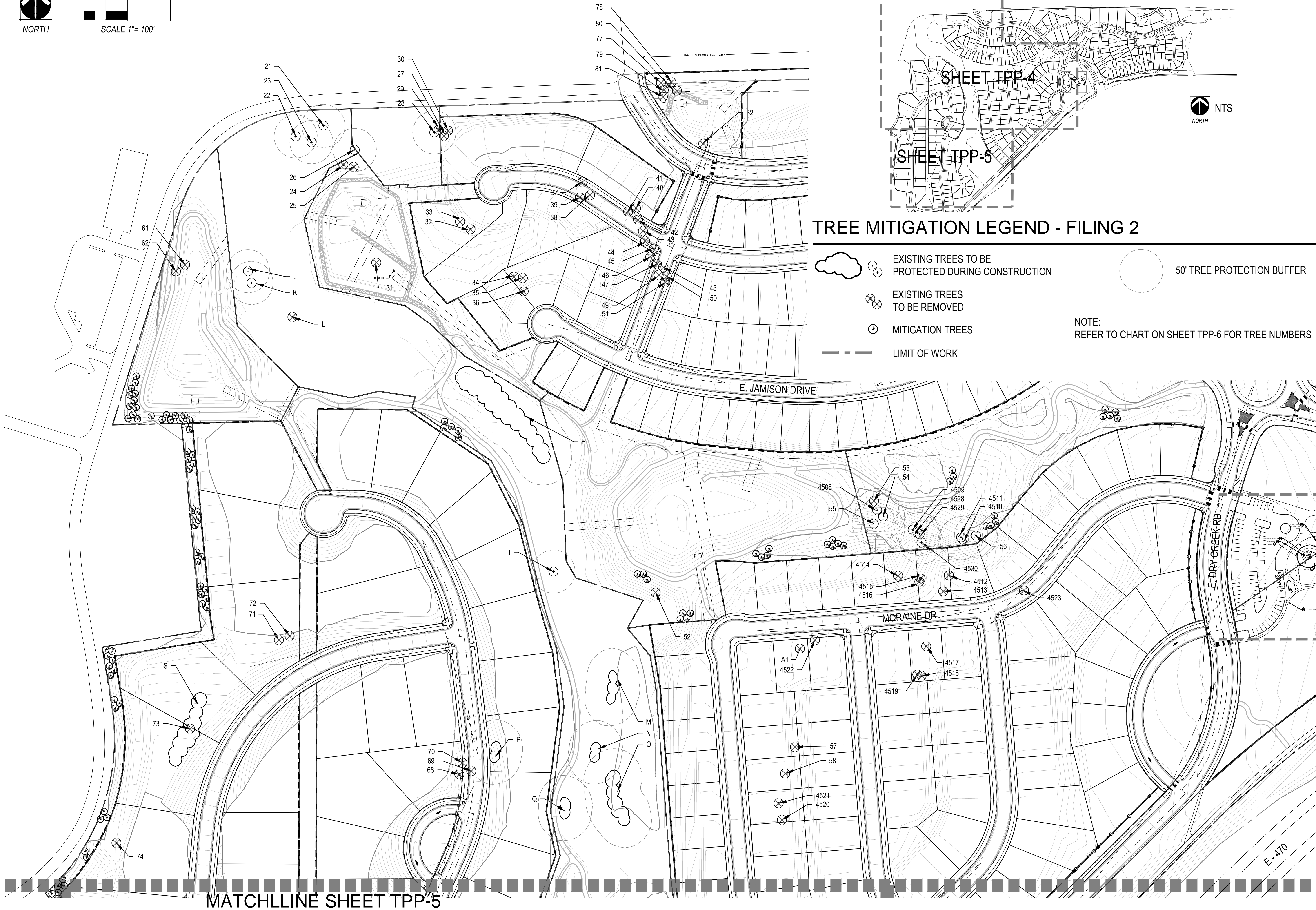
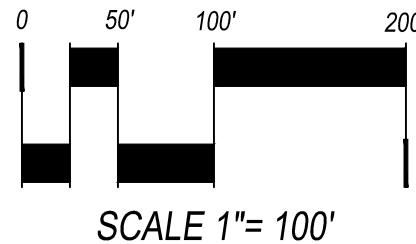
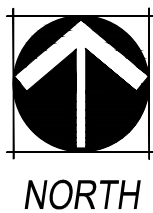


LEGEND

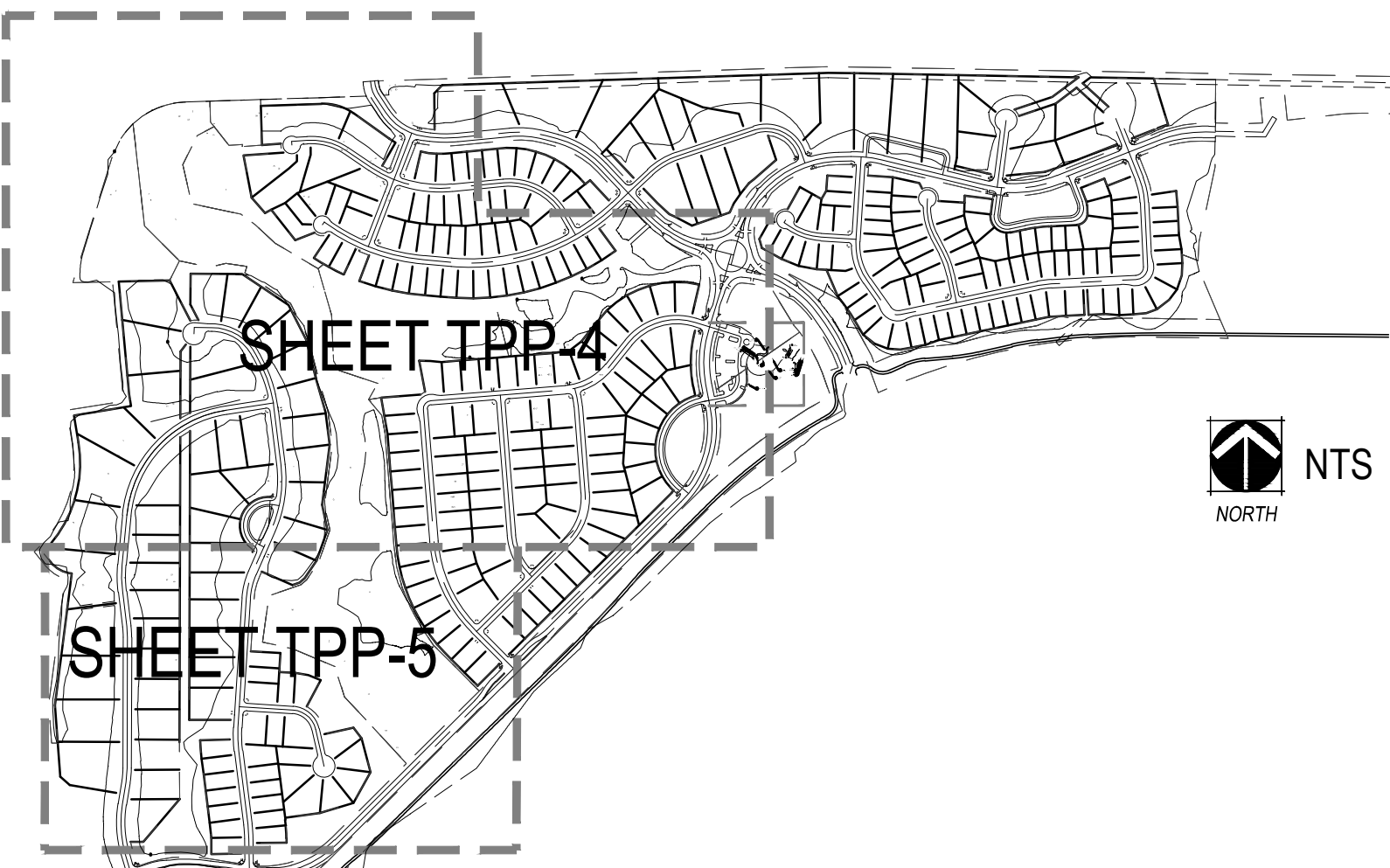
- EXISTING TREES TO BE PROTECTED DURING CONSTRUCTION
- EXISTING TREES TO BE REMOVED
- MITIGATION TREES
- LIMIT OF WORK
- 50' TREE PROTECTION BUFFER

NOTE:
-REFER TO CHART ON SHEET TPP-3 FOR TREE NUMBERS
-E-470 TRAIL ALIGNMENT IS CONCEPTUAL. FINAL TRAIL LOCATION, CONSTRUCTION AND MAINTENANCE BY OTHERS. FUTURE TREE EVALUATION, PRESERVATION AND/OR MITIGATION OF ANY BLACK FOREST TREES AFFECTED BY THE FINAL TRAIL ALIGNMENT TO BE THE RESPONSIBILITY OF E-470





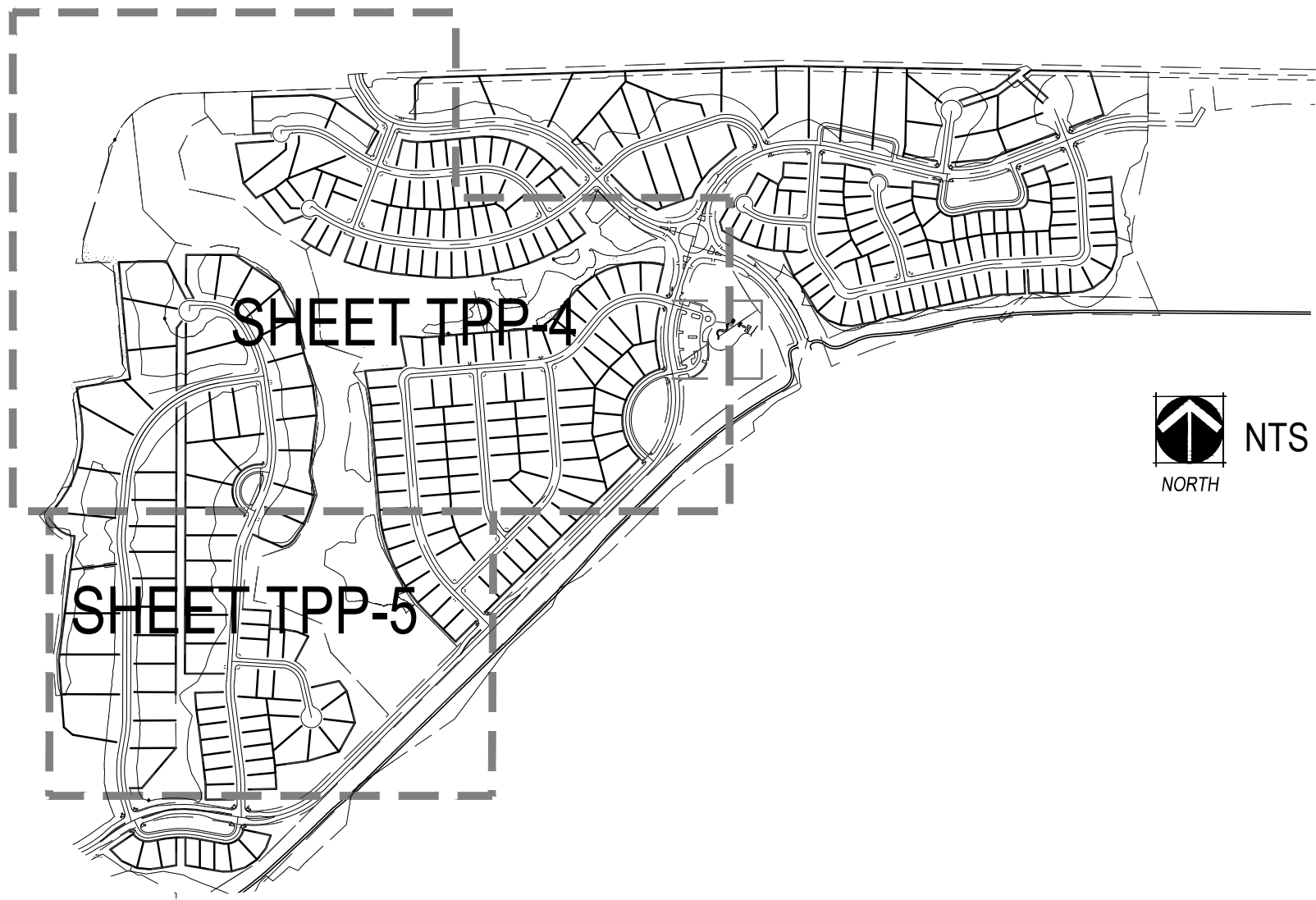
KEY MAP - FILING 2



TREE MITIGATION LEGEND - FILING 2

- EXISTING TREES TO BE PROTECTED DURING CONSTRUCTION
 - EXISTING TREES TO BE REMOVED
 - MITIGATION TREES
 - LIMIT OF WORK
 - 50' TREE PROTECTION BUFFER
- NOTE:
REFER TO CHART ON SHEET TPP-6 FOR TREE NUMBERS

KEY MAP - FILING 2



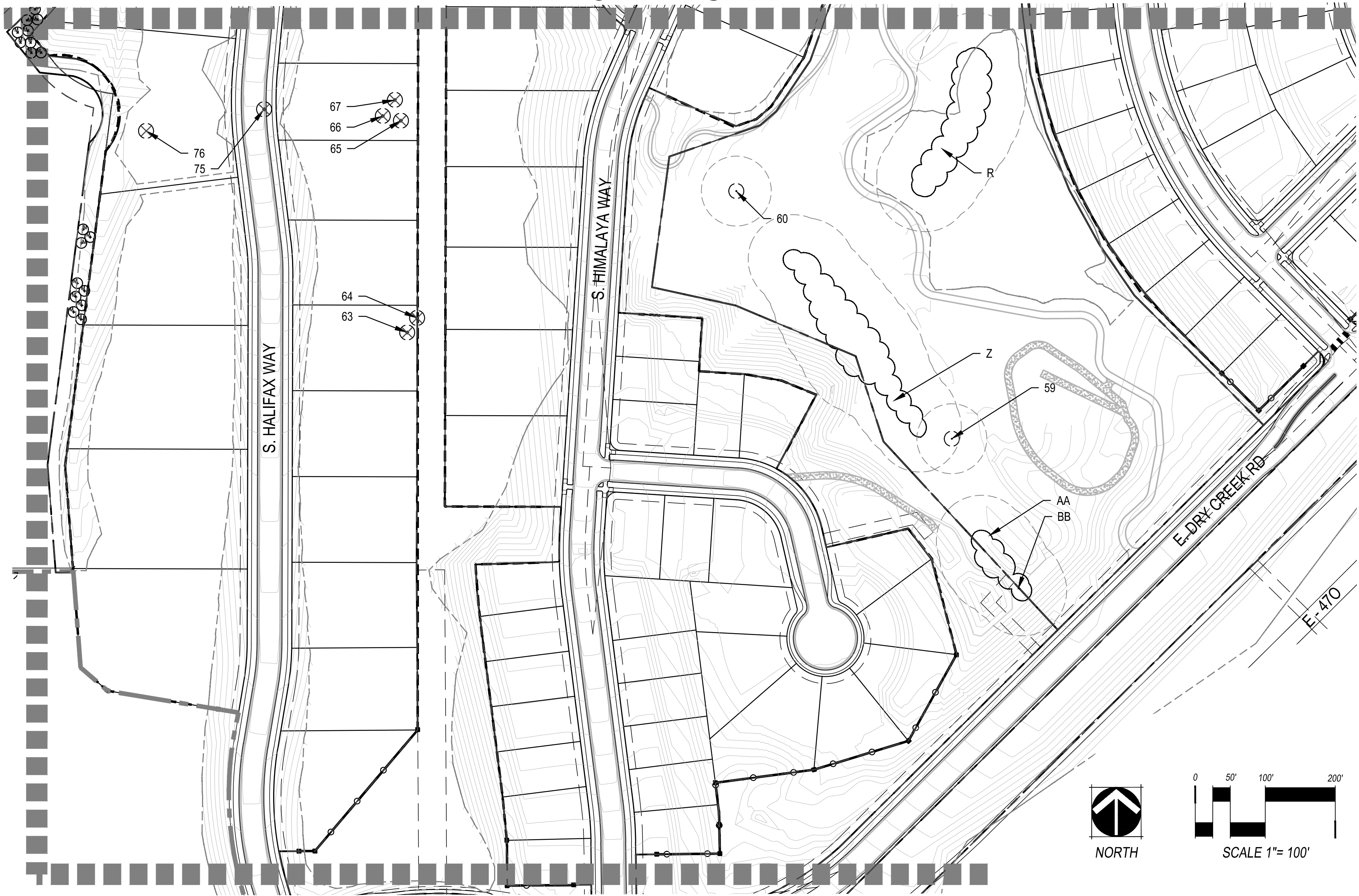
TREE MITIGATION LEGEND - FILING 2

- EXISTING TREES INVENTORIED/
TO BE PROTECTED DURING CONSTRUCTION
- EXISTING EVERGREEN TREES
TO BE REMOVED
- MITIGATION TREES
- LIMIT OF WORK
- 50' TREE PROTECTION BUFFER

NOTE:
REFER TO CHART ON SHEET TPP-6 FOR TREE NUMBERS

TREE MITIGATION PLAN - FILING 2

MATCHLINE SHEET TPP-4



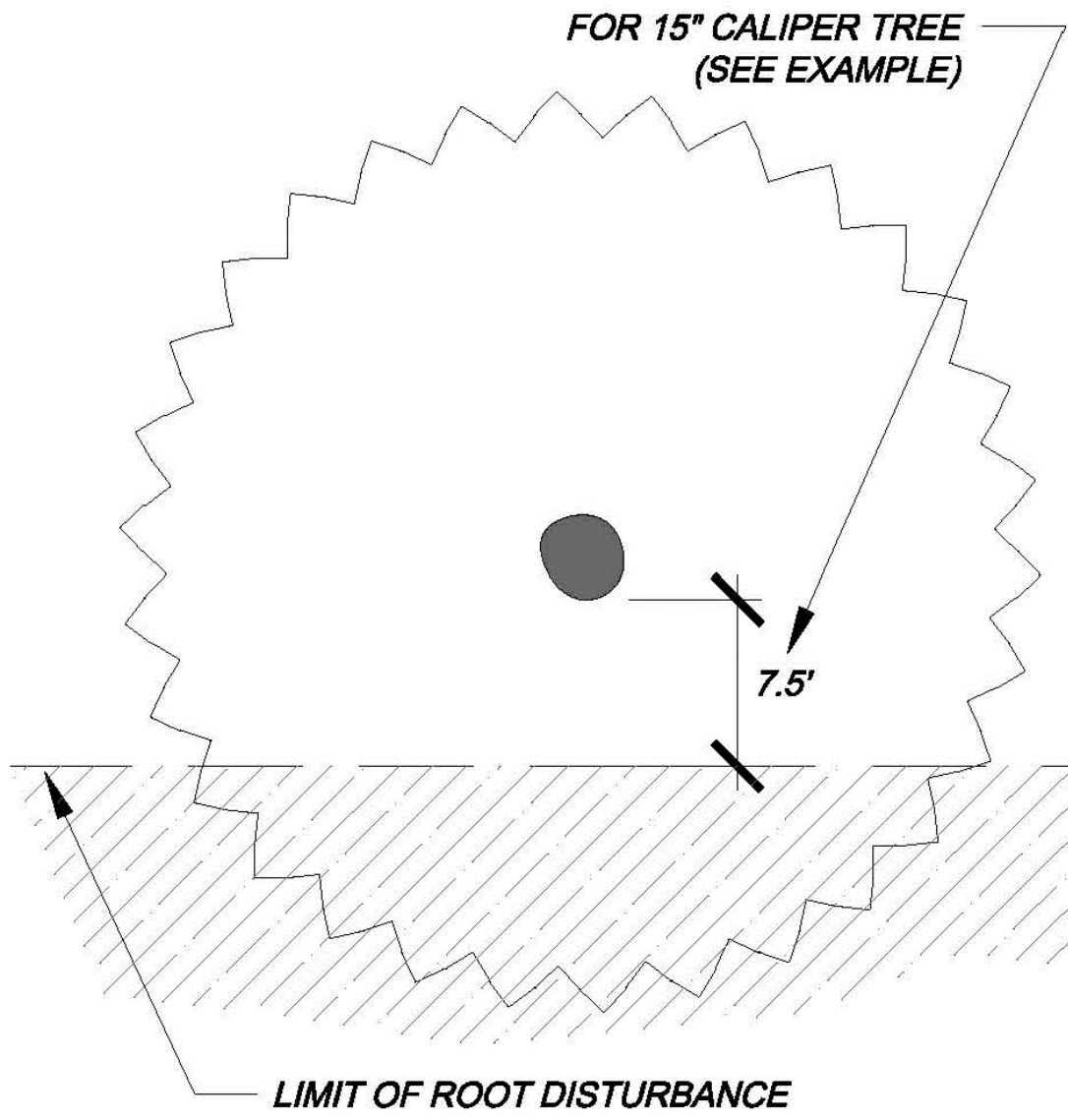
TREE PROTECTION NOTES

1. PRIOR TO THE BEGINNING OF CONSTRUCTION, ESTABLISH THE TREE PROTECTION ZONE BY INSTALLING TREE PROTECTION FENCING AROUND ALL EXISTING TREES TO REMAIN. LOCATE FENCING AT THE OUTSIDE OF THE DRIP LINE OF THE TREES OR AT A DISTANCE OF FROM THE TREE TRUNK OF ONE(1) FOOT OF RADIUS FOR EVERY INCH OF TRUNK DIAMETER, WHICHEVER IS GREATER. FOR GROUPS OF TREES, THE MINIMUM DISTANCE BETWEEN THE TREE TRUNK AND THE FENCING SHALL BE ONE(1) FOOT FOR EACH INCH OF TRUNK DIAMETER. FOLLOWING INSTALLATION OF FENCING, REQUEST INSPECTION BY THE CITY OF AURORA FORESTRY DIVISION OR AUTHORIZED DESIGNEE.
2. TREE PROTECTION FENCING SHALL BE 4' HEIGHT, ORANGE MESH FENCING ATTACHED TO T' POSTS. FENCING SHALL BE INSPECTED AND MAINTAINED DAILY.
3. CONTRACTORS SHALL BE RESPONSIBLE FOR ALL OF THEIR WORKERS, SUBCONTRACTORS AND SUPPLIERS UNDER THIS REQUIREMENT. WITHIN THE TREE PROTECTION ZONE, THE FOLLOWING CONSTRUCTION ACTIVITIES SHALL NOT BE ALLOWED EXCEPT AS NECESSARY TO EXECUTE DETAILS TP-2.0, 2.1, 3.1 & 3.2:
 - A. EQUIPMENT USE AND STORAGE
 - B. MATERIAL DELIVERY OR STORAGE
 - C. VEHICLE TRAFFIC, PARKING, USE OR STORAGE
 - D. SPREADING, EXCAVATING, COMPACTING OR STOCKPILING OF SOIL
 - E. CONCRETE WASH-OUT AREAS AND RUN-OFF FROM CONCRETE WASH-OUT AREAS
 - F. FOOT TRAFFIC
 - G. RUN-OFF CONTAINING HARMFUL LIQUIDS SUCH AS OIL, GAS, PAINT, SOLVENTS, FERTILIZER, ASPHALT, MORTAR, TAR OR SIMILAR MATERIALS
4. VIOLATION OF THE TREE PROTECTION ZONE SHALL RESULT IN A FINE OF \$100 PER INCIDENCE AND MAY BE INCREASED BASED ON THE PERCENTAGE OF THE ZONE AFFECTED MULTIPLIED BY THE FULL VALUE OF THE TREE (OR TREES) ESTABLISHED PRIOR TO CONSTRUCTION. IF MORE THAN 30% OF THE TREE PROTECTION ZONE IS DAMAGED, THE FINE SHALL BE THE FULL VALUE OF THE ADJACENT TREE (OR TREES). FOR THE PURPOSE OF THESE REQUIREMENTS, CONSTRUCTION FENCING (LOCATED AT THE LIMITS OF CONSTRUCTION) SHALL BE TREATED AS TREE PROTECTION FENCING AND SHALL ESTABLISH A TREE PROTECTION ZONE FOR NEARBY TREES.
5. DAMAGE TO THE MAIN TRUNKS OF TREES IS PROHIBITED. DAMAGE NOT PREVIOUSLY DOCUMENTED SHALL RESULT IN A FINE BASED ON THE PERCENTAGE OF THE CIRCUMFERENCE AFFECTED. DAMAGE GREATER THAN 30% OF THE CIRCUMFERENCE OR AFFECTING THE STRUCTURAL INTEGRITY OF THE TREE WILL RESULT IN A FINE EQUAL TO THE FULL VALUE OF THE TREE.
6. LIMB REMOVAL IS PROHIBITED, UNLESS APPROVED PRIOR TO CONSTRUCTION OR AS AUTHORIZED BY THE CITY OF AURORA FORESTRY DIVISION. LIMB REMOVAL, IF APPROVED, SHALL BE DONE PRIOR TO THE START OF CONSTRUCTION. DAMAGED BRANCHES SHALL BE PRUNED WITHIN 10 DAYS OF THE OCCURRENCE UTILIZING ANSI A300 STANDARDS. UNAUTHORIZED LIMB DAMAGE OR REMOVAL CAN RESULT IN A FINE OF \$100 PER BRANCH AS MAY BE DETERMINED BY THE CONSTRUCTION MANAGER OR HIS FORESTRY CONSULTANT. LIMB REMOVAL AND ALL OTHER APPROVED PRUNING SHALL BE PERFORMED BY A PROFESSIONAL COMPANY THAT IS LICENSED BY THE CITY OF AURORA FORESTRY DIVISION.
7. IF ROOTS GREATER THAN ONE(1) INCH DIAMETER REQUIRE CUTTING/REMOVAL, A CLEAN CUT SHALL BE ACCOMPLISHED USING A SHARP HAND TOOL. A MAXIMUM OF TWO(2) 3-INCH DIAMETER ROOTS PER TREE ARE PERMITTED FOR REMOVAL. THE REMOVAL OF ADDITIONAL ROOTS 3-INCHES OR GREATER IN DIAMETER REQUIRES APPROVAL OF THE CITY FORESTER OR AUTHORIZED DESIGNEE.
8. EXISTING TREES DAMAGED BY CONSTRUCTION ACTIVITIES SHALL BE IMMEDIATELY REPAIRED AND IF DAMAGED BEYOND REPAIR, REPLACED PER THE MITIGATION SPECIFICATIONS OUTLINED IN SECTION IV, SUBSECTION A, ITEM 3 OF THE TREE PRESERVATION POLICY. THE MITIGATION PLAN FOR THESE TREES SHALL FOLLOW THAT APPROVED THROUGH THE SITE PLAN SUBMITTAL.

CITY OF AURORA STANDARD NOTES

TREE PROTECTION - ONE SIDE

CITY OF AURORA STANDARD DETAIL



FORMULA FOR LIMIT OF DISTURBANCE:

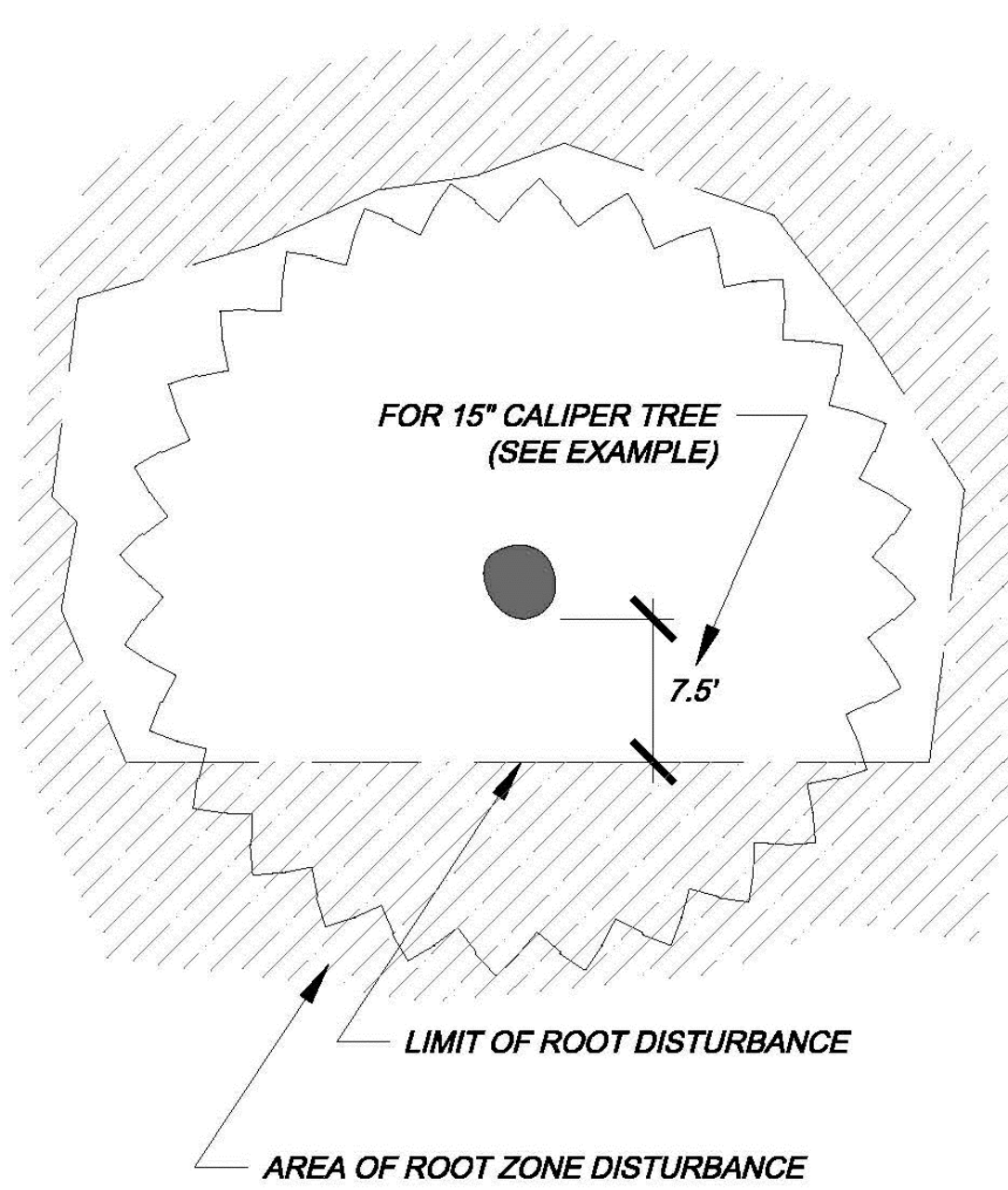
ROOT ZONE DISTURBANCE SHALL NOT BE ALLOWED CLOSE TO THE TRUNK OF ANY TREE TO BE PRESERVED. MINIMUM DISTANCE BETWEEN THE TRUNK AND THE DISTURBANCE SHALL BE EQUAL TO 1/2 OF THE TREE'S DIAMETER CONVERTED TO FEET. (FOR EXAMPLE, FOR A TREE WITH A 15" DIAMETER TRUNK, THE DISTURBANCE CAN NOT BE CLOSER THAN 7.5 FEET FROM THE TRUNK.

REQUIRED TREATMENTS:

1. APPLY PREVENTATIVE SPRAY FOR MOUNTAIN PINE BEETLE (MPB) AND IPS TO PONDEROSA, AUSTRIAN & SCOTCH PINES. TREAT ALL BARK SURFACES, INCLUDING TOP BRANCHES.
2. IF DISTURBANCE LEAVES A CUT SLOPE, IMMEDIATELY APPLY MULCH AND WATER. IF DISTURBANCE IS A TRENCH, IMMEDIATELY BACKFILL AND WATER.
3. ONCE PER MONTH, EVALUATE TREE TO DETERMINE IF TREE IS LEANING OR IF BRANCHES / LEAVES ARE AFFECTED BY ROOT LOSS.
4. DO NOT FERTILIZE.
5. INSPECT TREE 2-3 TIMES PER YEAR FOR WATER NEEDS AND MONITOR FOR INSECTS.
6. PROVIDE SUPPLEMENTAL WATERING DURING 1-3 WINTERS.

TREE PROTECTION - MORE THAN ONE SIDE

CITY OF AURORA STANDARD DETAIL



LIMITATIONS OF ROOT ZONE DISTURBANCE:

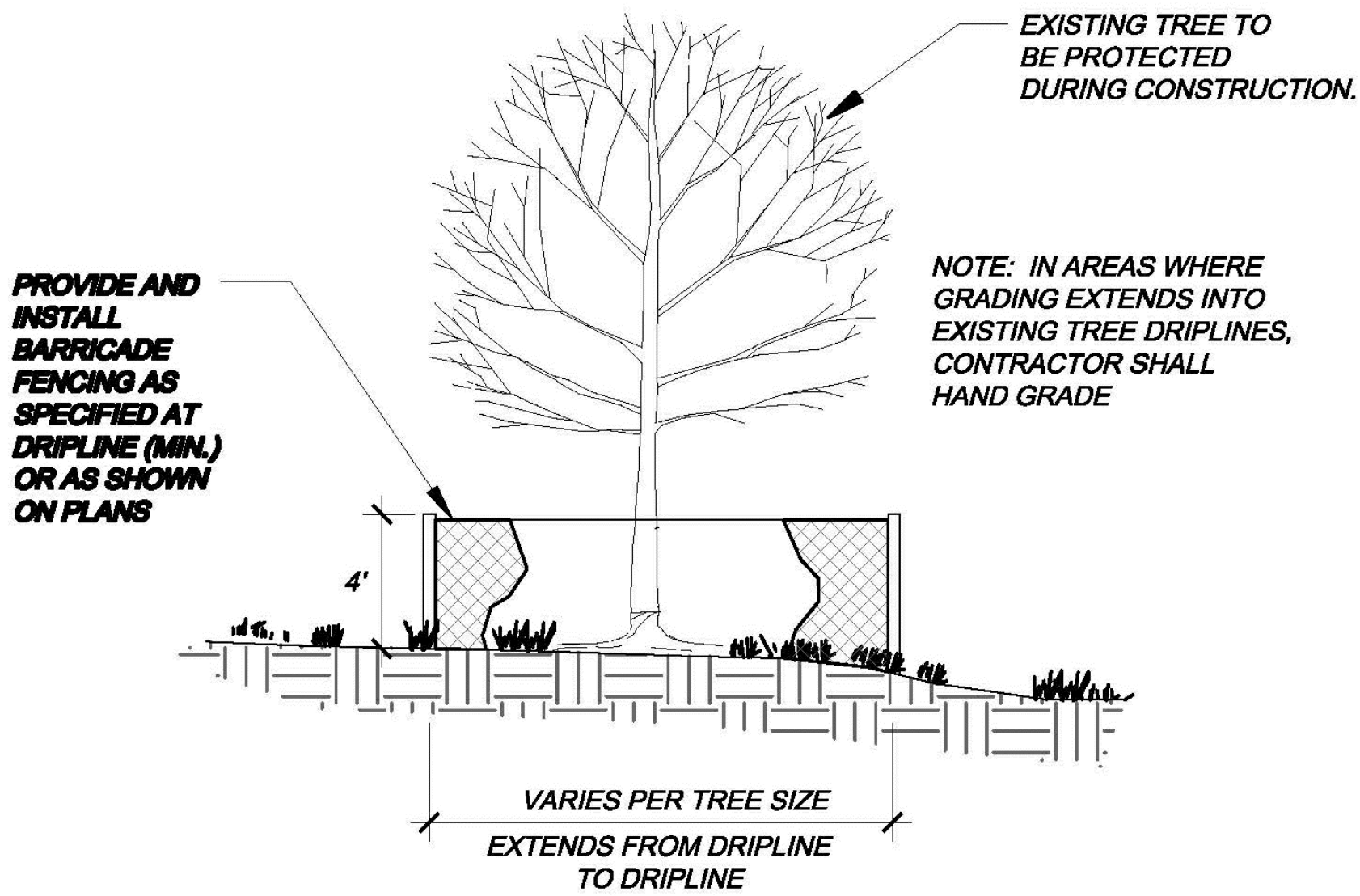
ROOT ZONE DISTURBANCE WITHIN THE DRIP LINE SHALL BE LIMITED TO ONE SIDE OF THE TRUNK OF TREES TO BE PRESERVED. MINIMUM DISTANCE BETWEEN THE TRUNK AND THE DISTURBANCE SHALL BE EQUAL TO 1/2 OF THE TREE'S DIAMETER CONVERTED TO FEET. (FOR EXAMPLE, FOR A TREE WITH A 15" DIAMETER TRUNK, THE DISTURBANCE CAN NOT BE CLOSER THAN 7.5 FEET FROM THE TRUNK.

REQUIRED TREATMENTS:

1. APPLY PREVENTATIVE SPRAY FOR MOUNTAIN PINE BEETLE (MPB) AND IPS TO PONDEROSA, AUSTRIAN & SCOTCH PINES. TREAT ALL BARK SURFACES, INCLUDING TOP BRANCHES.
2. IF DISTURBANCE LEAVES A CUT SLOPE WITHIN THE DRIPLINE, IMMEDIATELY APPLY MULCH AND WATER.
3. APPLY 3"-5" OF ORGANIC MULCH OVER THE AREA WITHIN THE DRIPLINE
4. EVERY 1-2 WEEKS, APPLY 50-100 GALLONS OF SUPPLEMENTAL WATER.
5. PROVIDE SUPPLEMENTAL WATER DURING 1-3 WINTERS
6. REGULARLY EVALUATE TREE TO DETERMINE IF TREE IS LEANING OR IF BRANCHES / LEAVES ARE AFFECTED BY ROOT LOSS.
7. INSPECT TREE 2-3 TIMES PER YEAR FOR WATER NEEDS AND MONITOR FOR INSECTS.
8. INSTALL STAKING OR SUPPORT FOR SMALLER PINE TREES.

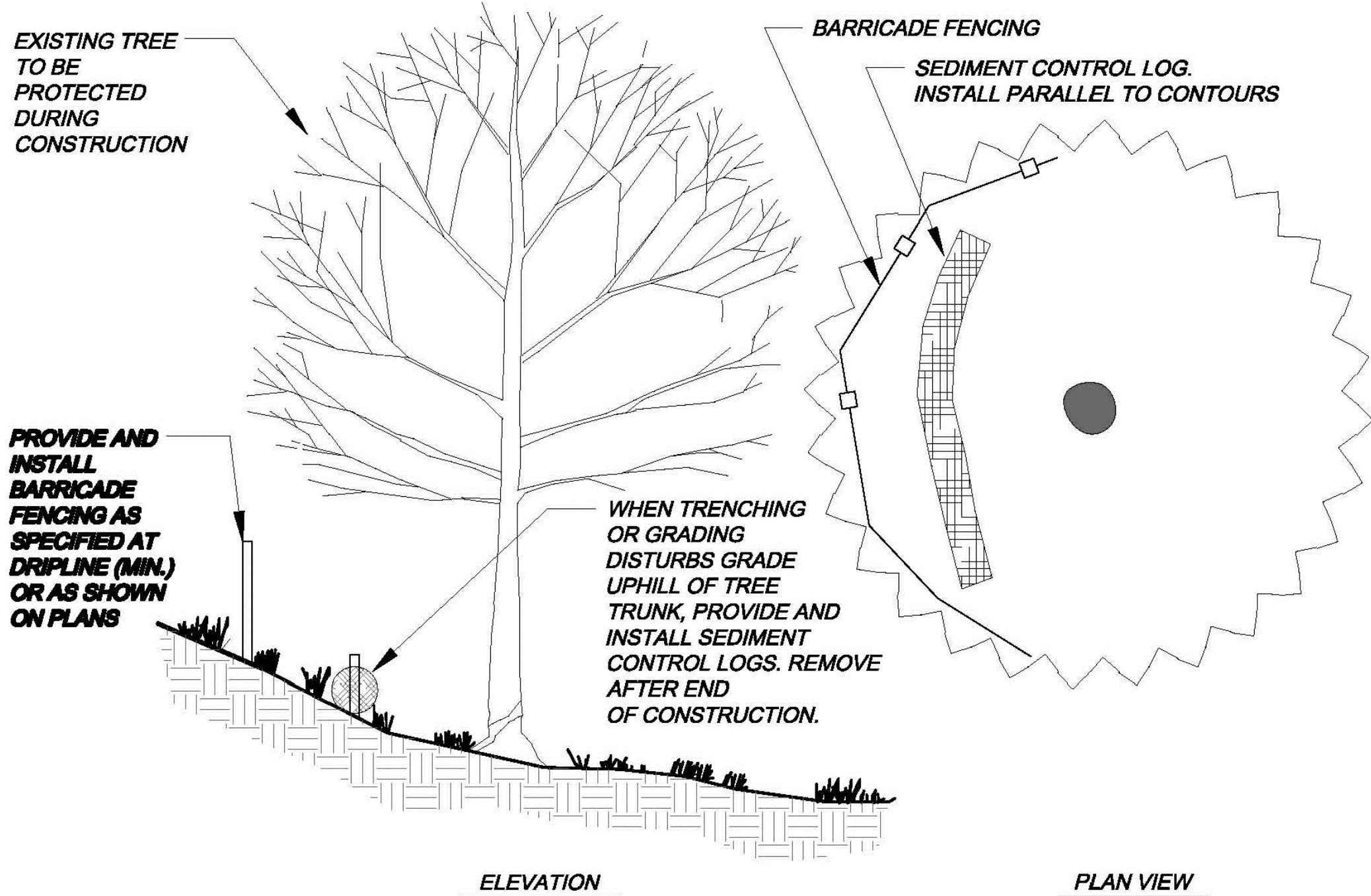
TREE PROTECTION - ELEVATION

CITY OF AURORA STANDARD DETAIL



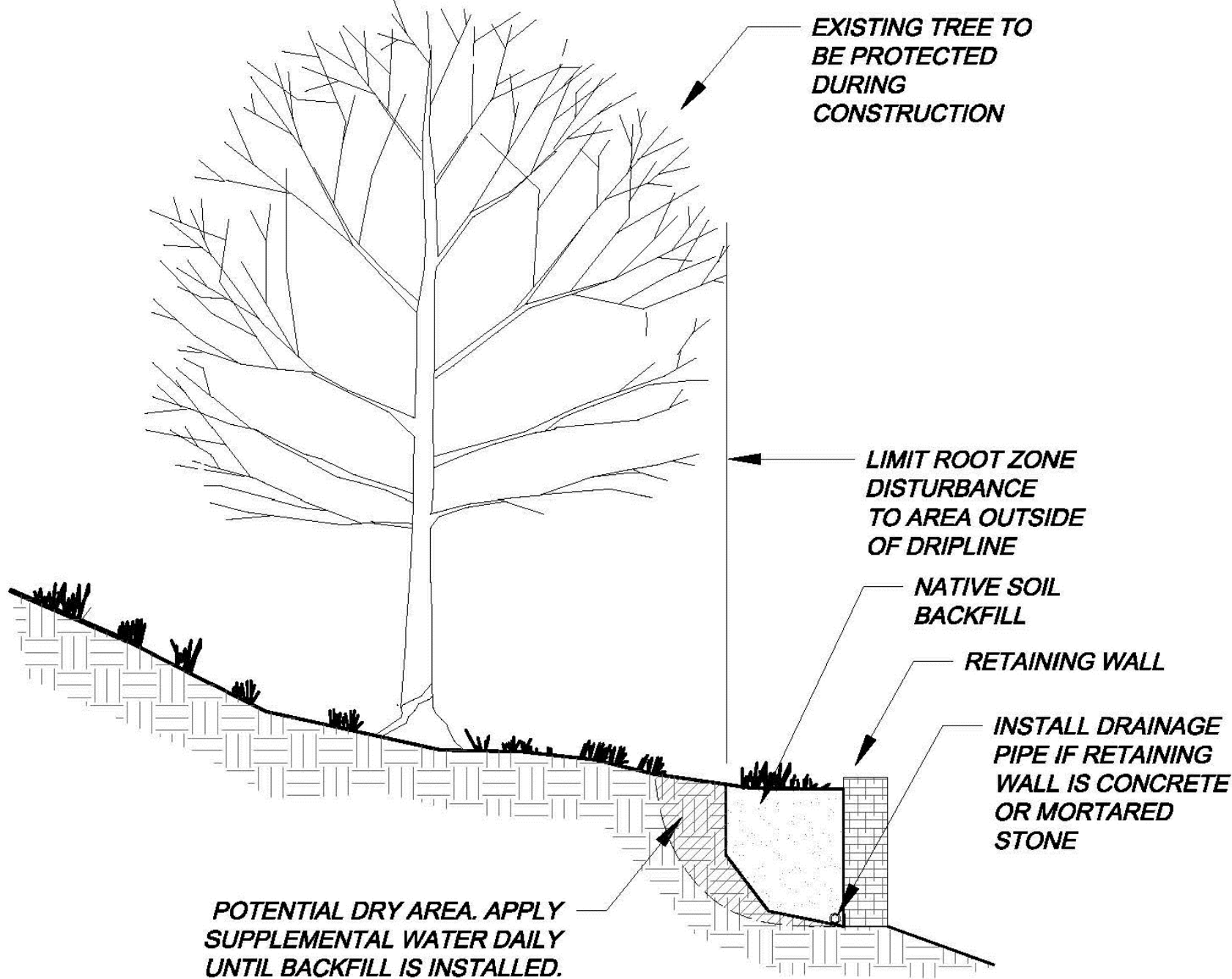
TREE PROTECTION - ON A SLOPE

CITY OF AURORA STANDARD DETAIL

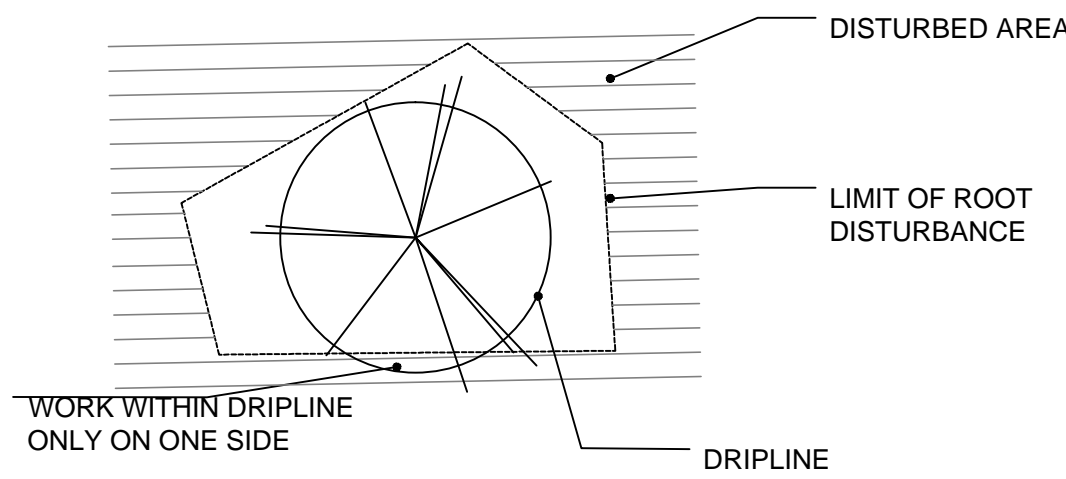


TREE PROTECTION - NEW RETAINING WALL

CITY OF AURORA STANDARD DETAIL



ROOT LOSS ON ONE SIDE WITH SIGNIFICANT IMPACT ON THE TREE SURVIVAL

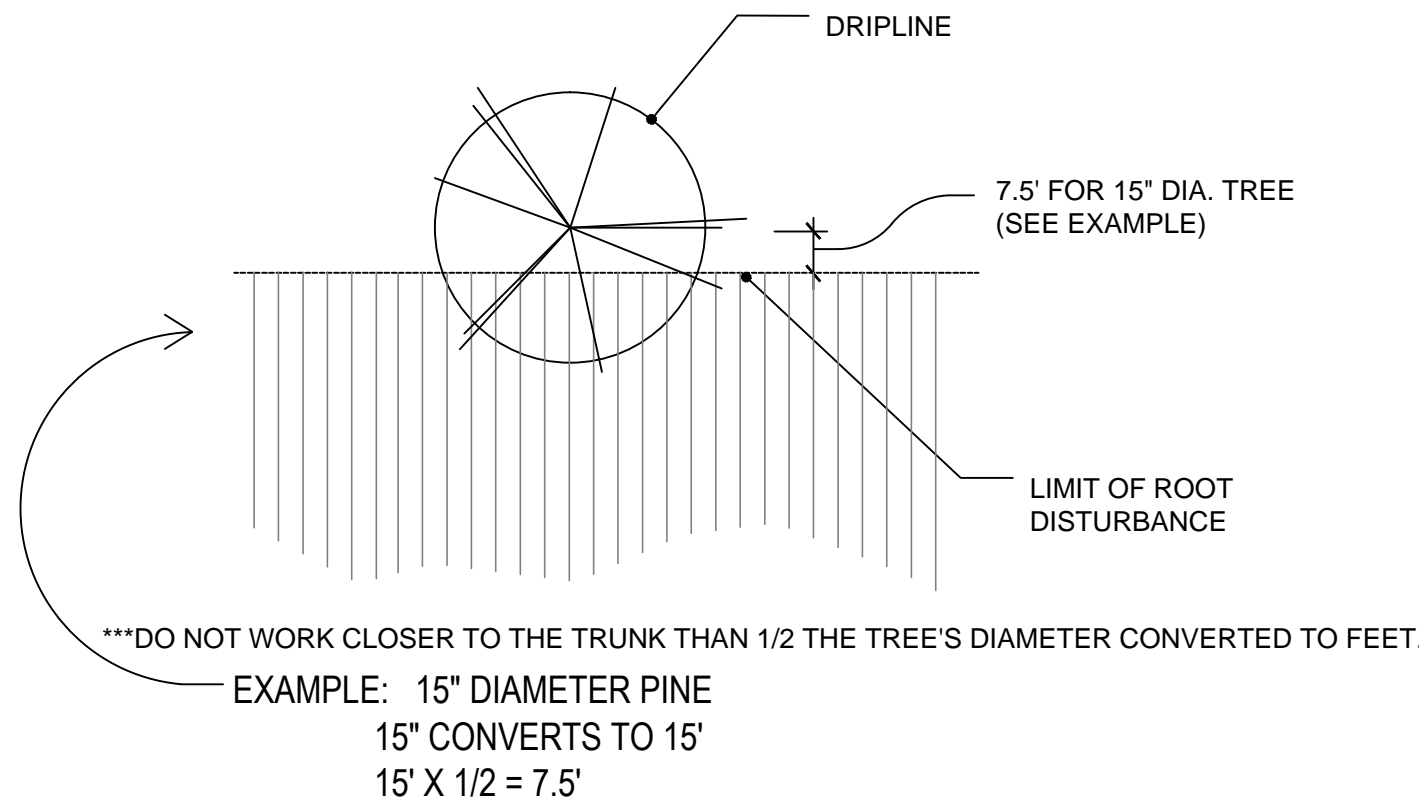


WHEN WORKING COMPLETELY AROUND A TREE, DO NOT WORK WITHIN THE DRIPLINE ON MORE THAN ONE SIDE. APPLIES TO TRANSPLANTED AND INTRODUCED PINES AS WELL AS CONSTRUCTION IMPACTED TREES.

TREATMENT:

- USE 3"-5" OF MULCH EXTENDING TO DRIPLINE.
- PREVENTATIVE SPRAY FOR MPB AND IPS.
- ALL BARK SURFACES TO BE TREATED INCLUDING TOP AND BRANCHES
- SUPPLEMENTAL WATERING, 50-100 GALLONS, APPLIED EVERY 1-2 WEEKS.
- WINTER WATER FOR 1-3 WINTERS.
- EVALUATE FOR LEAN OR DEFECT.
- INSPECT 2-3 TIMES PER YEAR FOR WATER NEEDS AND MONITOR FOR INSECTS.
- STAKING / SUPPORT ON SMALLER PINES.

ROOT LOSS ON ONE SIDE WITH MINIMAL IMPACT ON THE TREE SURVIVAL (30-120 YEARS OLDD PINES)



TREATMENT:

- PREVENTATIVE SPRAY FOR MOUNTAIN PINE BEETLE (MPB).
- ALL BARK SURFACES TO BE TREATED INCLUDING TOP BRANCHES.
- MULCH EDGE OF CUT AREA AND WATER IN.
- EVALUATE FOR LEAN OR DEFECT.
- DO NOT FERTILIZE.

NOTE: THIS IS INTENDED AS A GUIDELINE ONLY AND IT IS NOT INTENDED TO BE A HARD AND FAST RULE. TREE AGE, HEALTH AND PROXIMITY TO IMPROVEMENTS CAN AFFECT WORKING DISTANCES.