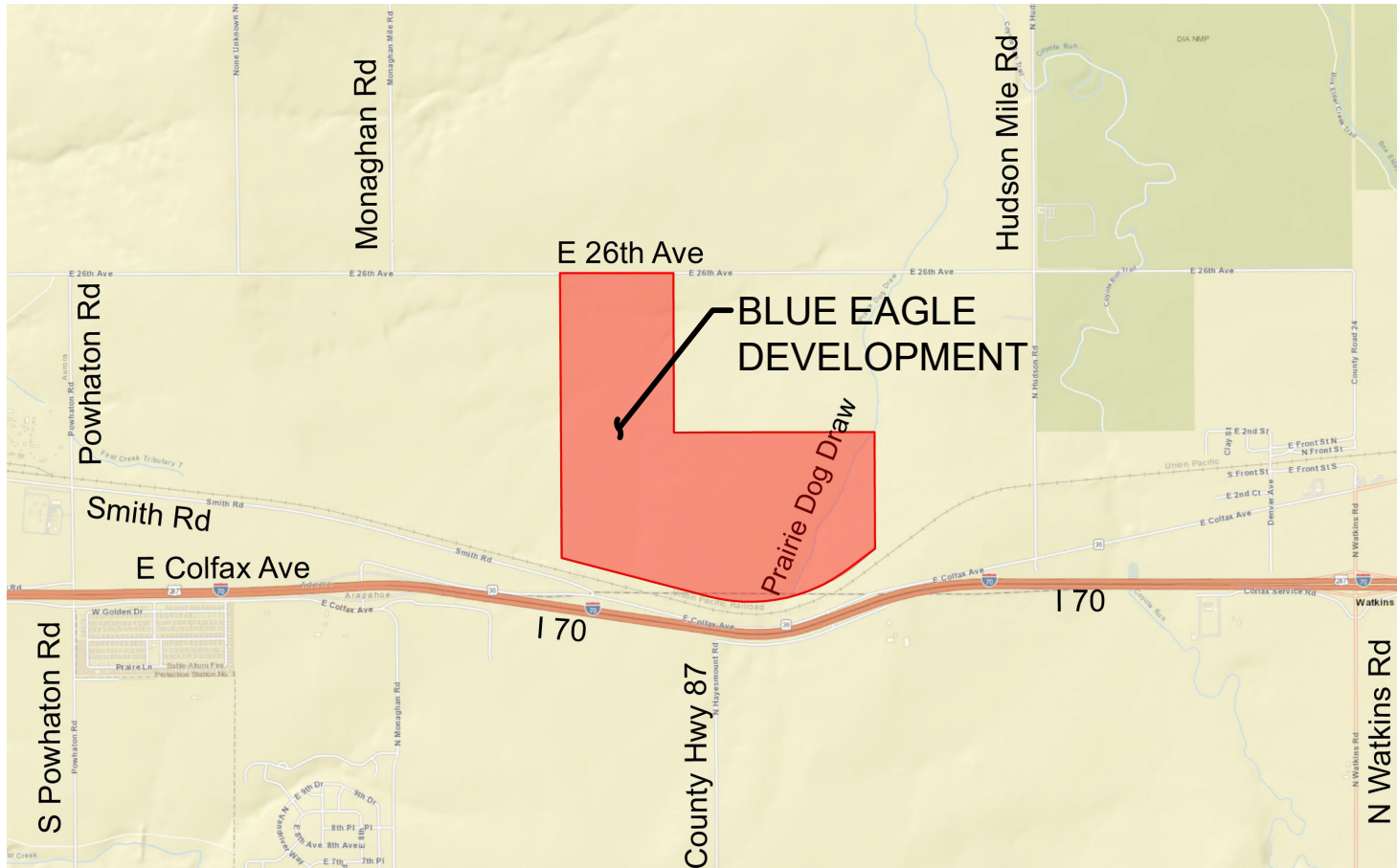
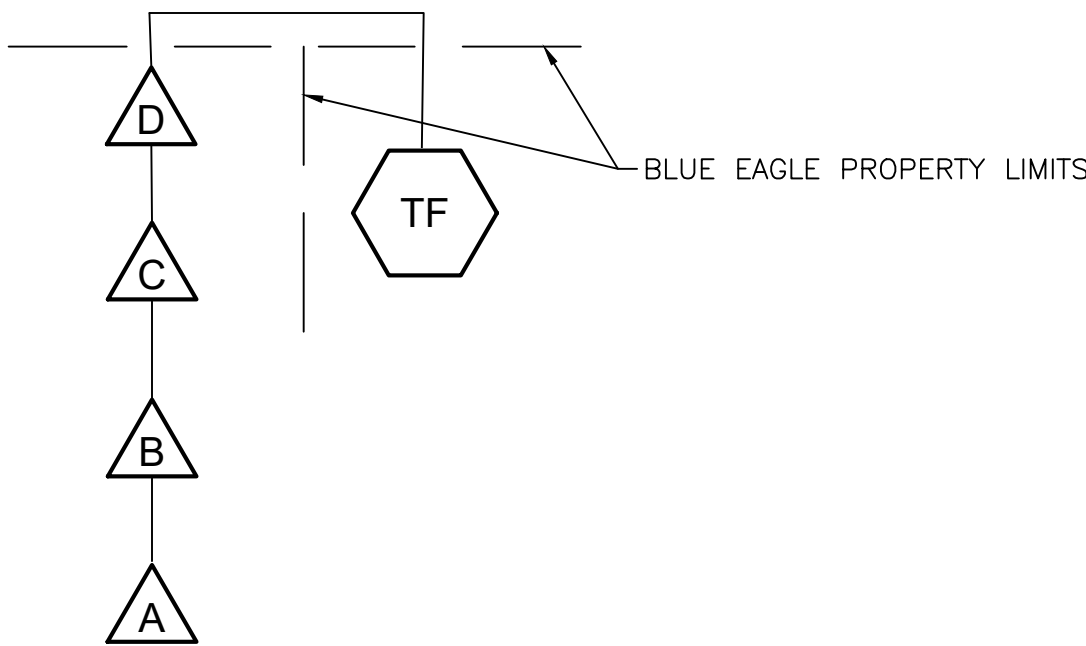


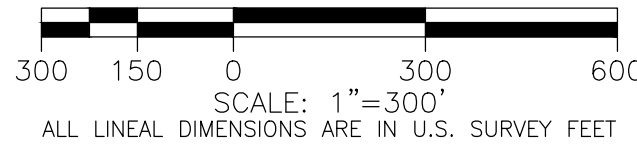
Node	Basins Added to System	Total Avg. Daily Flow @ Node (MGD)	Total Upstream Population	Peaking Factor = 5/p <sup>0.167</sup>	Peak Flow (MGD)	Infiltration (MGD)	Peak Flow + Infiltration (MGD)	Peak Flow + Infiltration (cfs)
A	PA-04 (57%)	0.17	2511	4.00	0.670	0.017	0.686	1.062
B	PA-04 (43%)	0.294	4405	3.90	1.146	0.029	1.176	1.819
C	PA-02 (100%) + PA-03 (100%)	0.391	5867	3.72	1.455	0.039	1.495	2.312
D	PA-01 (100%)	0.436	6529	3.66	1.594	0.044	1.638	2.534

SANITARY ROUTING SCHEMATIC



VICINITY MAP  
1"=3000'

LEGEND		* SYMBOLS MAY NOT BE TO SCALE FOR BETTER GRAPHICAL REPRESENTATION.
---	PROPERTY LINE	
---	PLANNING AREA BOUNDARY LINE	
SS	PROPOSED SANITARY SEWER	
SS	PROPOSED OFF-SITE SANITARY SEWER	
SS	EXISTING OFF-SITE SANITARY SEWER	
	PROPOSED OPEN SPACE	
	PROPOSED ROADWAY	
	PROPOSED PLANNING AREA	



NOTES:

- CITY OF AURORA PLAN REVIEW IS ONLY FOR GENERAL CONFORMANCE WITH CITY OF AURORA DESIGN CRITERIA AND THE CITY CODE. THE CITY IS NOT RESPONSIBLE FOR THE ACCURACY AND ADEQUACY OF THE DESIGN, OF DIMENSIONS AND ELEVATIONS WHICH SHALL BE CONFIRMED AND CORRELATED AT THE JOB SITE. THE CITY OF AURORA, THROUGH THE APPROVAL OF THIS DOCUMENT, ASSUMES NO RESPONSIBILITY FOR THE COMPLETENESS AND/OR ACCURACY OF THIS DOCUMENT.
- IF THE OFF-SITE SANITARY SEWER SYSTEM INFRASTRUCTURE HAS NOT YET BEEN INSTALLED, THE DEVELOPING PLANNING AREA MAY BE RESPONSIBLE FOR BUILDING THE NECESSARY OFF-SITE SANITARY SEWER REQUIRED TO SUPPORT THE PLANNING AREA. THE PLANNING AREA DEVELOPMENT SHALL WORK WITH THE CITY OF AURORA DURING THE CSP PROCESS TO DETERMINE THE BEST OPTION FOR CONNECTING TO THE CITY'S EXISTING SANITARY SEWER SYSTEM, BY EXTENDING THE EXISTING SANITARY SEWER SYSTEM, UPDATING THE ROUTING AND DESIGN POINTS DESCRIBED IN THIS REPORT, PERFORM SIGNIFICANT OVER LOT GRADING, UTILIZE LIFT STATIONS AND FORCES MAINS, ETC. THE PROPOSED SANITARY INFRASTRUCTURE MAY NEED TO BE EXTENDED INTO EACH PROPOSED BASIN TO ROUTE PROPOSED FLOWS FROM INDIVIDUAL PLANNING AREAS TO THE DESIGN POINTS DESCRIBED IN THIS REPORT. THIS REPORT, THE DESIGN POINT LOCATIONS, OR THE ROUTING CAN BE UPDATED OR AMENDED IF NECESSARY, TO SUPPORT THE SANITARY NEEDS FOR PLANNING AREAS DETERMINED IN THE FUTURE.

BENCHMARK

ELEVATIONS ARE BASED ON A CITY OF AURORA BM #4S6503NE001, A 3-1/4" ALUMINUM CAP ATOP A 5' LONG #6 REBAR IN A PVC PIPE WITH CAP LOCATED ON THE NORTHERLY SIDE OF RAILROAD TRACKS, ±1.7 MILES EAST ALONG RAILROAD TRACKS FROM POWHATON ROAD AND SMITH ROAD AND ±385' WEST OF CENTERLINE OF A PRIVATE DRIVE.

ELEVATION = 5584.78' (NAVD1988) DATUM.

BASIS OF BEARINGS

BEARINGS ARE BASED ON THE WESTERLY LINE OF THE SOUTHEAST QUARTER OF SECTION 34, TOWNSHIP 34 SOUTH, RANGE 65 WEST OF THE SIXTH PRINCIPAL MERIDIAN ASSUMED TO BEAR S00°18'58"E AND BEING MONUMENTED BY A FOUND 2-1/2" ALUMINUM CAP PLS #7361 AT THE CENTER QUARTER CORNER AND A FOUND 2-1/2" ALUMINUM CAP PLS #28656 IN RANGE BOX AT THE SOUTH QUARTER CORNER.

FROM Node	TO Node	Peak Flow + Infiltration (MGD)	Peak Flow + Infiltration (cfs)	Required Pipe Size (in)	Pipe Percent Full (%)
A	B	0.686	1.062	12	41.9
B	C	1.176	1.819	12	57.9
C	D	1.495	2.312	12	71.7
D	CONNECTION	1.638	2.534	12	76.1



APPROVED FOR ONE YEAR FROM THIS DATE

AURORA WATER – UTILITY DIVISION

DATE

BLUE EAGLE -  
MASTER PLANNING  
PUBLIC IMPROVEMENT PLAN  
OVERALL SANITARY MAP

No.	Description of Revisions	Date	Name
1	FOR CITY APPROVAL	11/07/24	M/M

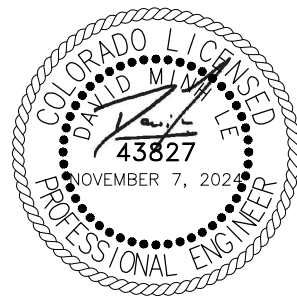
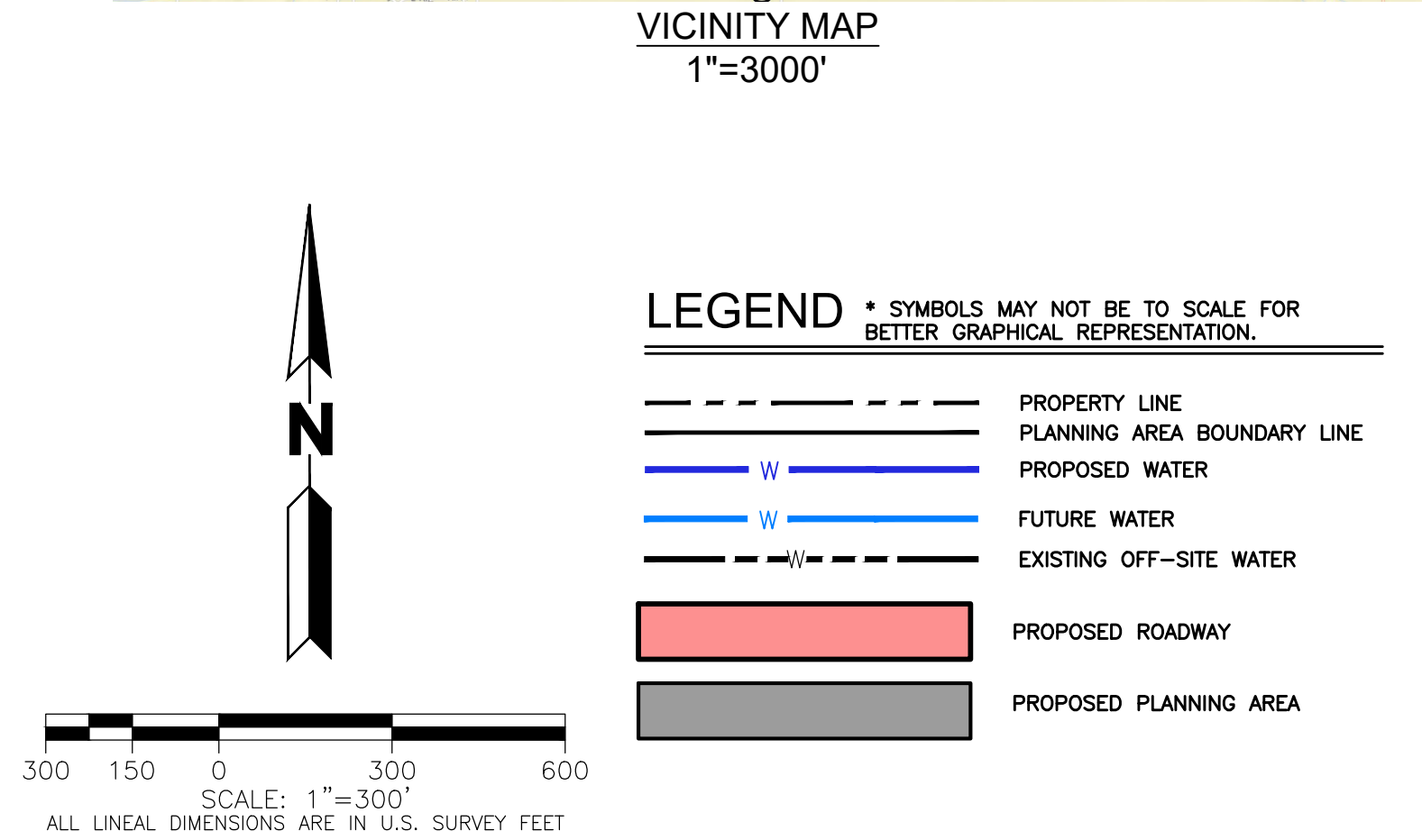
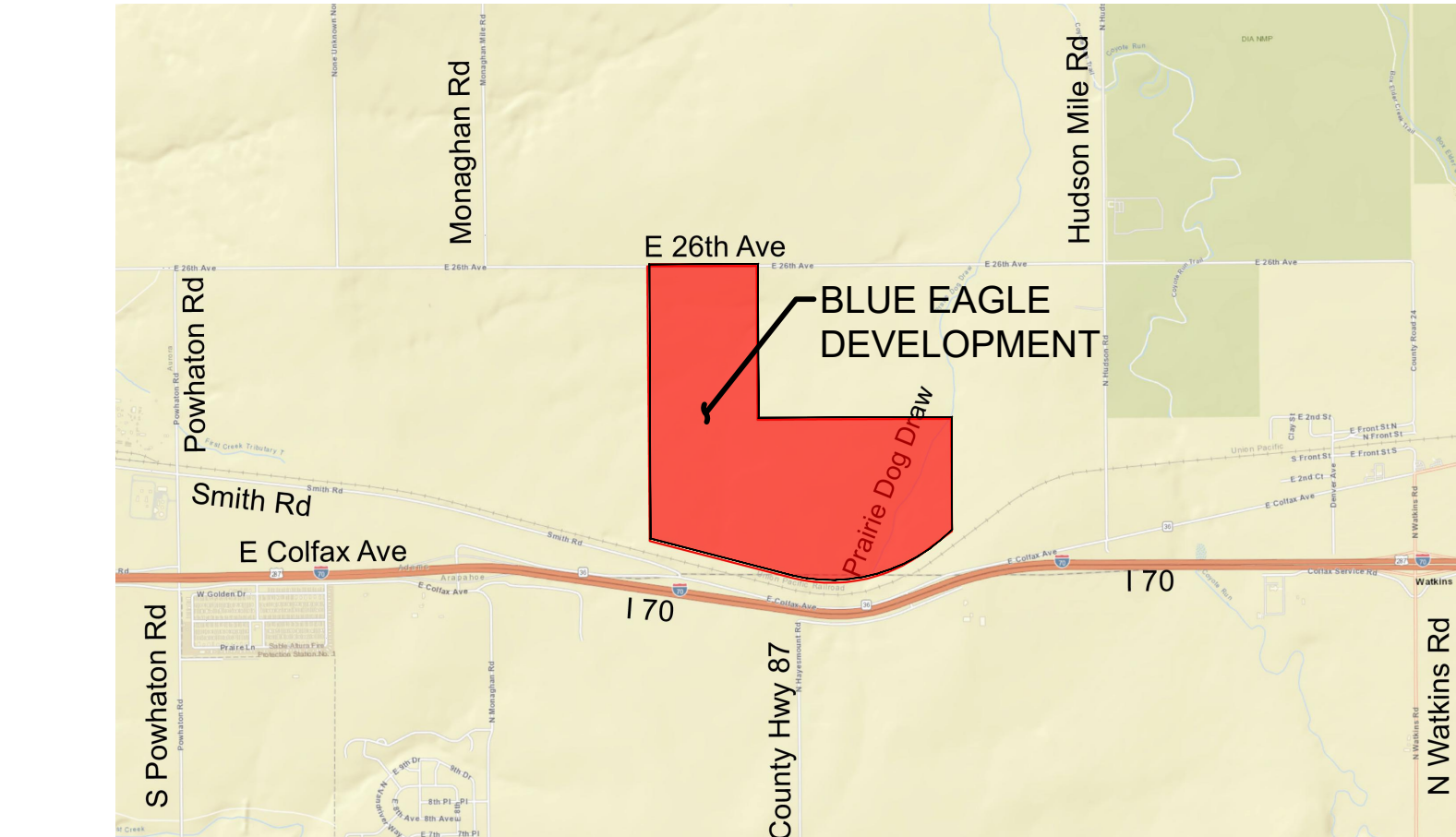
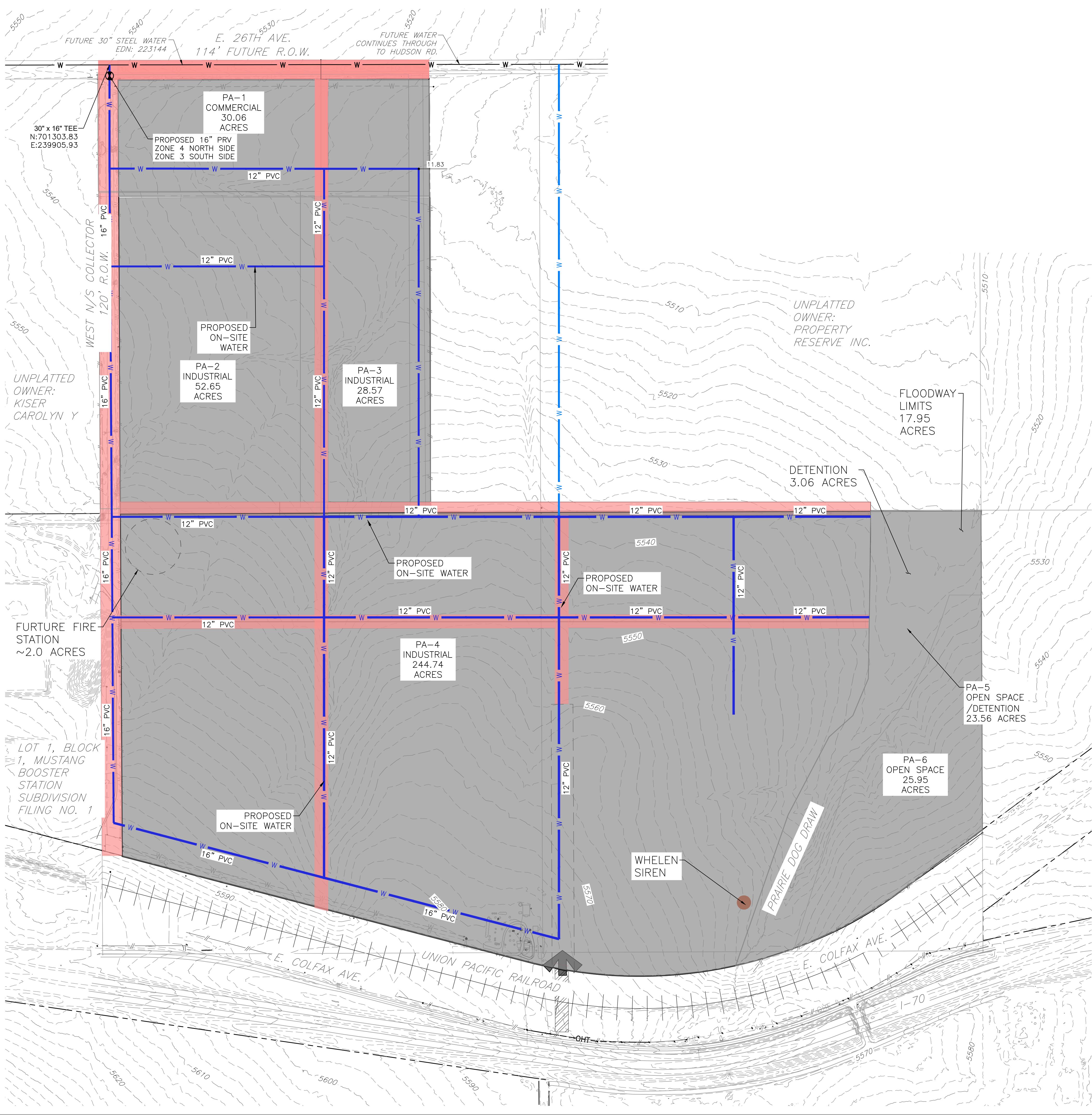
Job Number 23.1060	Project Manager G.PROULX
Design By BAM/TJS	Drawn By JWR/DJB
Principal in Charge D.LE	

Sheet Number:

MUS-S  
1 OF 1



PLOT DATE: Thursday, November 7, 2024 2:59 PM LAST SAVED BY: TSTEENERSON  
DRAWING LOCATION: G:\LE\22.1654-Blue Eagle - Master Planning\PLANS\UTILITY\WATER\BLUE EAGLE MASTER DRAINAGE PLAN (WATER).dwg



APPROVED FOR ONE YEAR FROM THIS DATE

AURORA WATER – UTILITY DIVISION  
FIRE & LIFE SAFETY DEPARTMENT

DATE  
DATE

BLUE EAGLE -  
MASTER PLANNING  
PUBLIC IMPROVEMENT PLAN  
OVERALL WATER MAP

No.	Description of Revisions	Date	Name
1	FOR CITY APPROVAL	11/07/24	M/M

Job Number 23.1060	Project Manager G.PROULX
	Design By BAM/TJS
	Drawn By JWR/DJB
	Principal in Charge D.LE