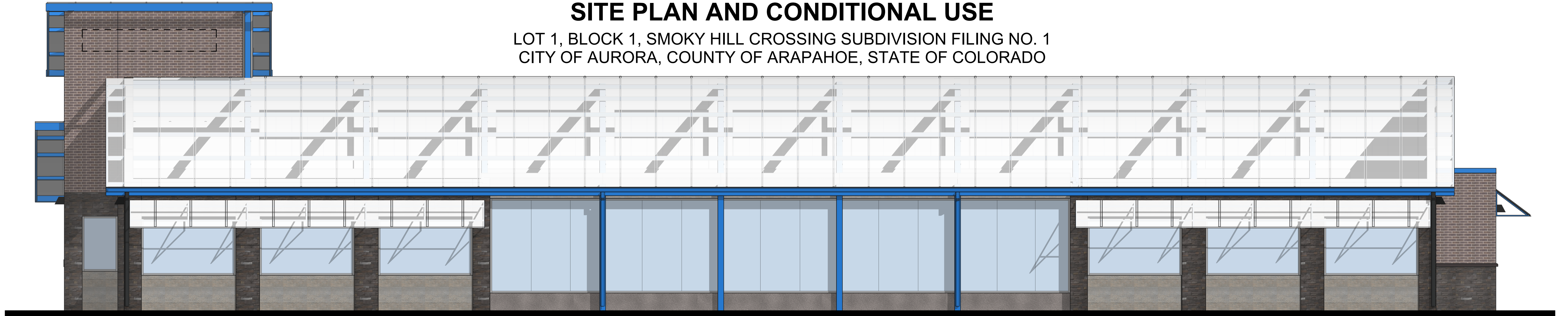


LIVING WATER AT SMOKY HILL CROSSING

SITE PLAN AND CONDITIONAL USE

LOT 1, BLOCK 1, SMOKY HILL CROSSING SUBDIVISION FILING NO. 1
CITY OF AURORA, COUNTY OF ARAPAHOE, STATE OF COLORADO



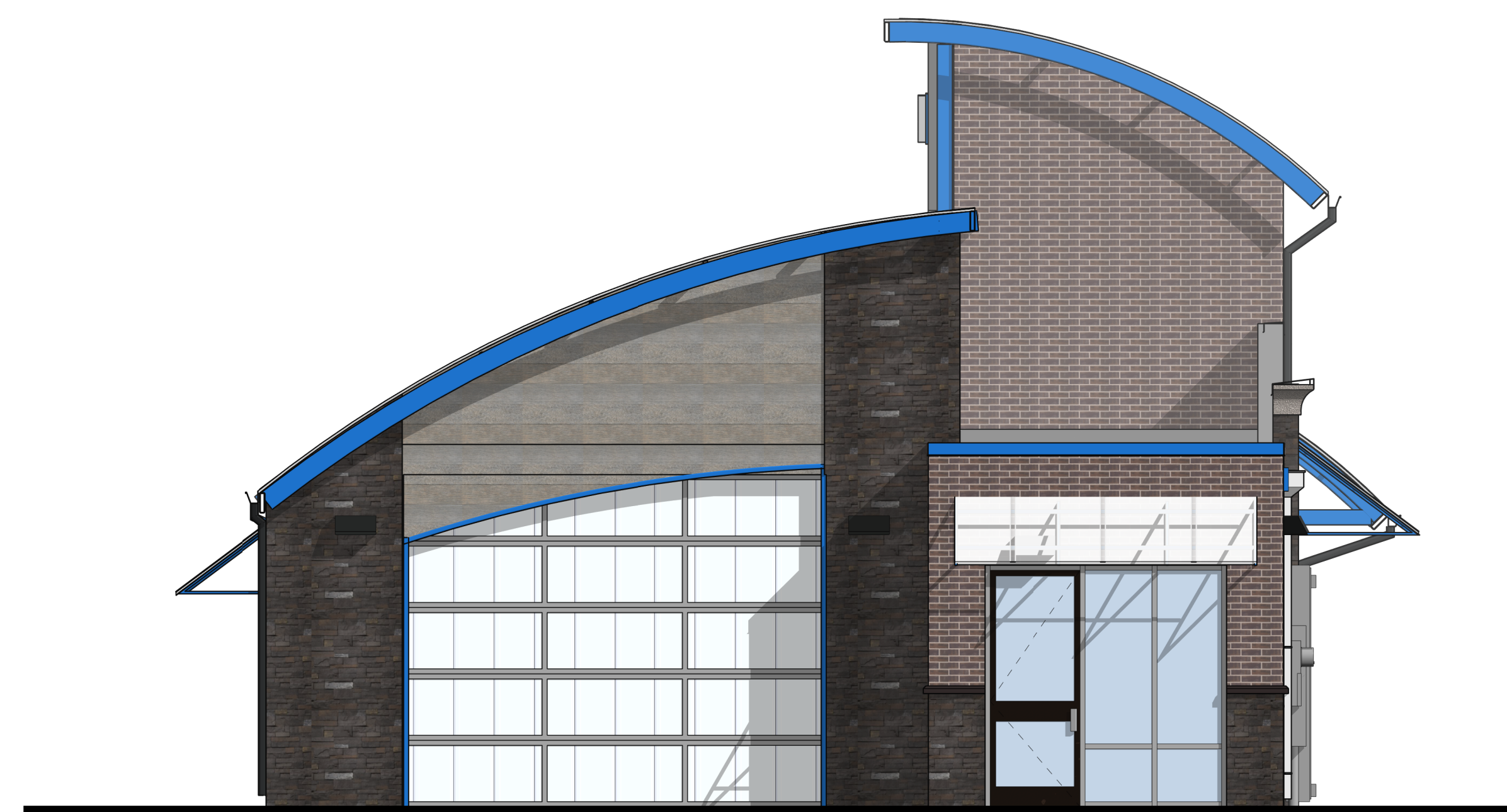
1 ELEVATION - NORTH
13 OF 12 1/4" = 1'-0"



2 ELEVATION SOUTH
13 OF 12 1/4" = 1'-0"



3 ELEVATION - EAST
13 OF 12 1/4" = 1'-0"



4 ELEVATION - WEST
13 OF 12 1/4" = 1'-0"

DATE: 01.07.2021
SCALE: 1/4" = 1'-0"
DRAWN BY: ALW
CHECKED BY: PEW

H O V E R
ARCHITECTURE
8920 BARRONS BLVD, SUITE 102
HIGHLANDS RANCH, CO 80129
(720) 773-2600

COPYRIGHT NOTICE
THESE PLANS ARE AN INSTRUMENT OF SERVICE AND ARE THE
PROPERTY OF H O V E R ARCHITECTURE. AND MAY NOT BE
DUPLICATED, DISCLOSED, OR REPRODUCED WITHOUT THE
WRITTEN CONSENT OF H O V E R ARCHITECTURE. COPYRIGHTS
AND INFRINGEMENTS WILL BE ENFORCED AND PROSECUTED.

PROJECT NUMBER
0202.24

SHEET

13 OF 12

COLOR
ELEVATIONS