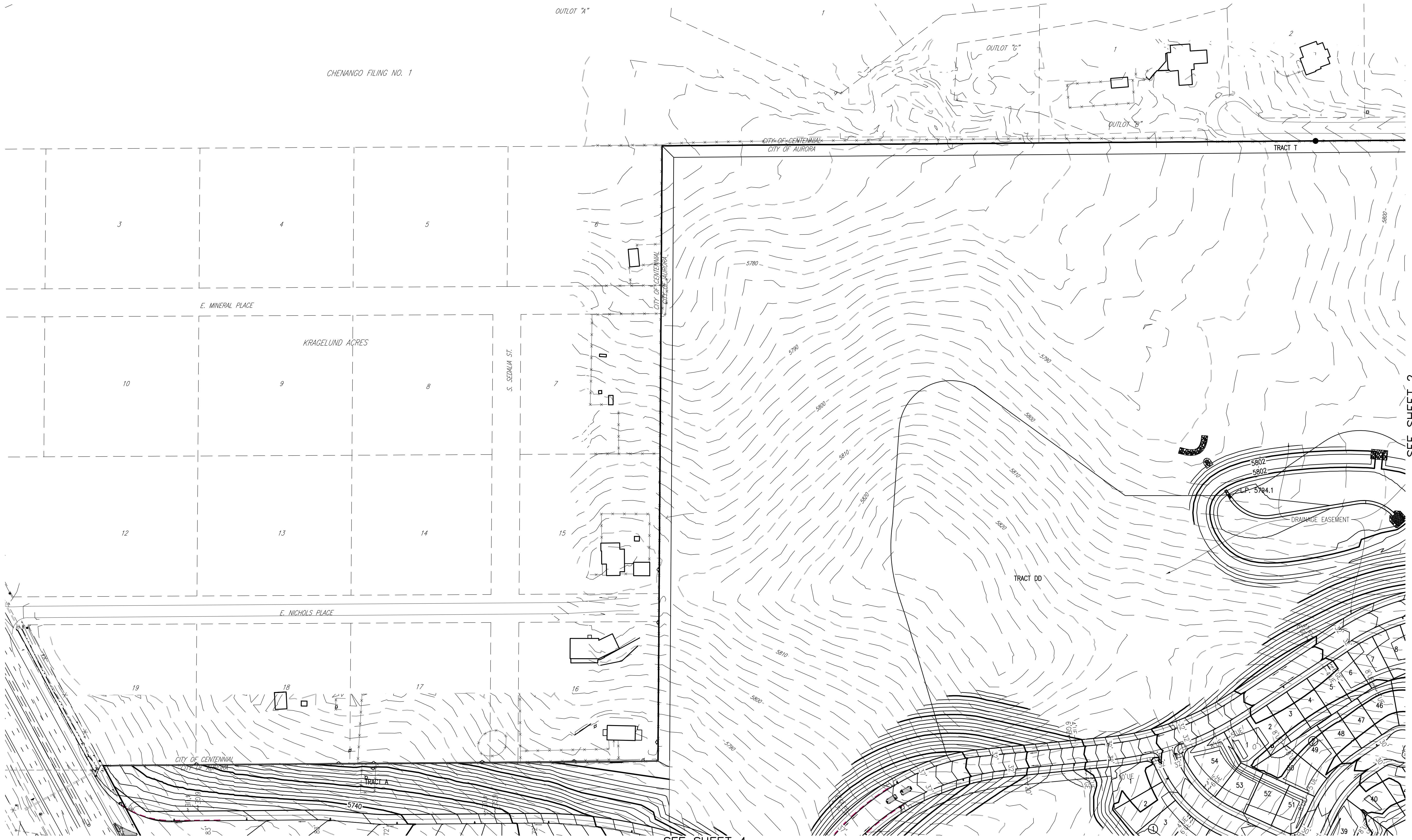
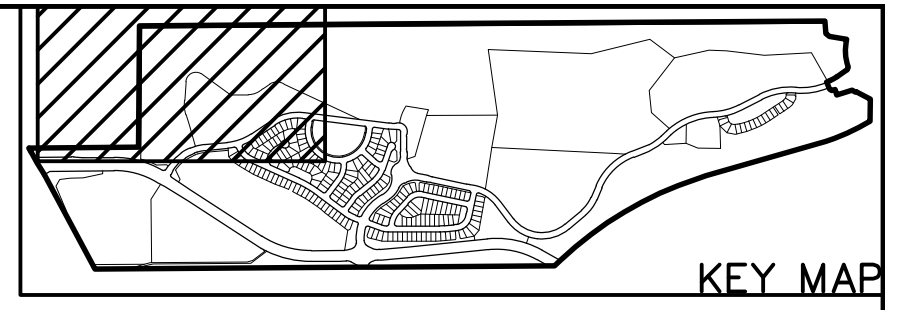


KINGS POINT CONTEXTUAL SITE PLAN NO. 1
CONTEXTUAL SITE PLAN WITH WAIVERS
A PART OF SECTIONS 33 AND 34, TOWNSHIP 5 SOUTH, RANGE 66 WEST OF THE 6TH P.M.
CITY OF AURORA, COUNTY OF ARAPAHOE, STATE OF COLORADO

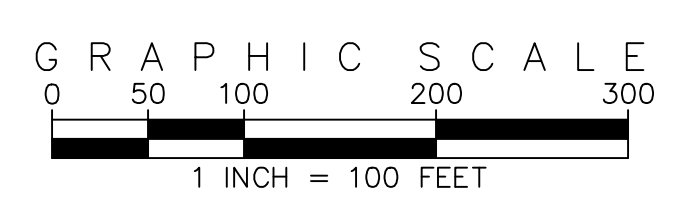


SEE SHEET 2

SEE SHEET 4



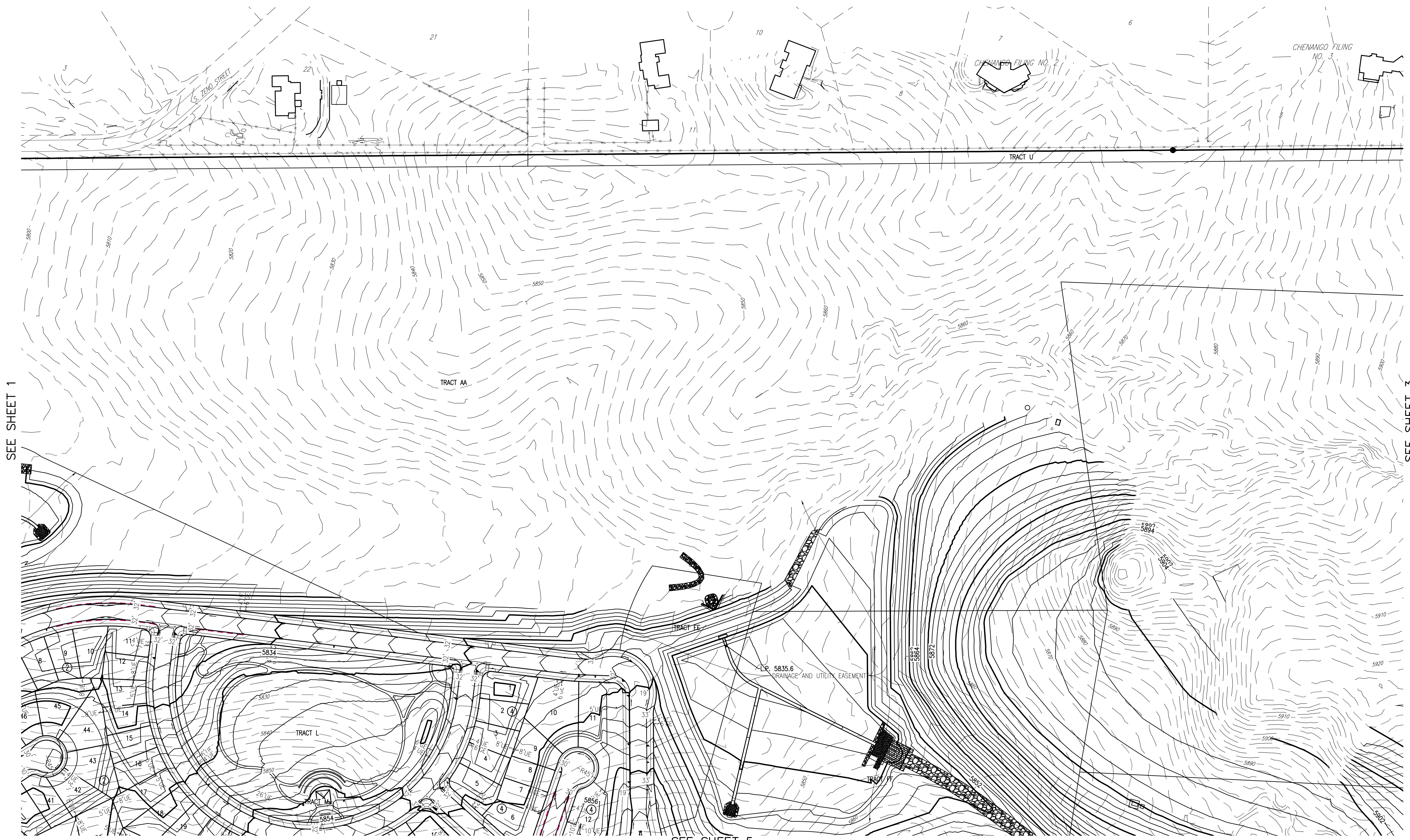
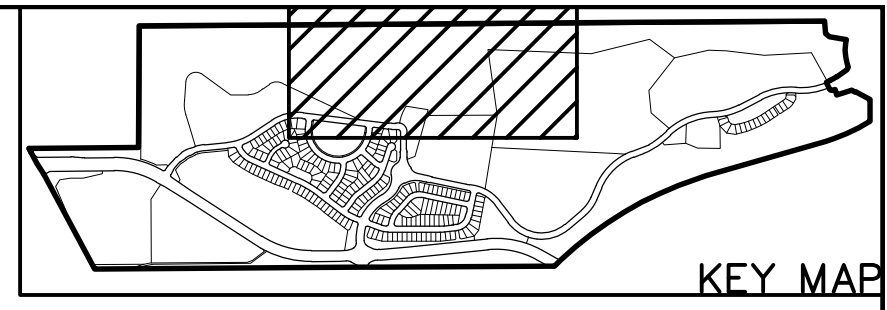
EMK CONSULTANTS, INC.
ENGINEERING SURVEYING
LAND DEVELOPMENT
SERVICES AND SOLUTIONS
7006 SOUTH ALTON WAY, BLDG. F
CENTENNIAL, COLORADO 80112-2019
(303)694-1520 www.EMKC.com



DEVELOPER
KINGSPPOINT LLC
c/o CASTLE ROCK DEVELOPMENT COMPANY
3033 E FIRST AVENUE, SUITE 410
DENVER, COLORADO 80206
PHONE: (303) 394-5525
CONTACT: BRUCE STOKES

PRELIMINARY GRADING PLAN
KINGS POINT FILING NO. 1
CONTEXTUAL SITE PLAN
PREPARED: 03.15.17
REVISED: 09.07.18
SHEET 1 OF 6

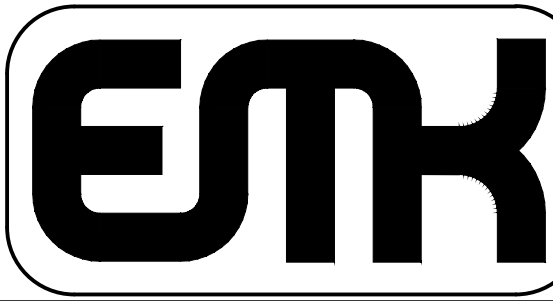
KINGS POINT CONTEXTUAL SITE PLAN NO. 1
CONTEXTUAL SITE PLAN WITH WAIVERS
A PART OF SECTIONS 33 AND 34, TOWNSHIP 5 SOUTH, RANGE 66 WEST OF THE 6TH P.M.
CITY OF AURORA, COUNTY OF ARAPAHOE, STATE OF COLORADO



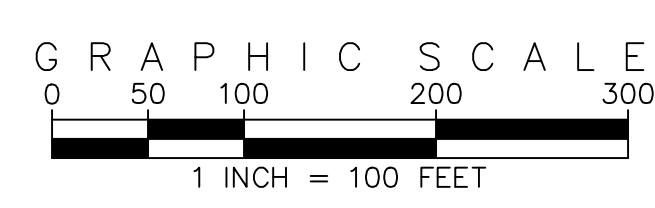
SEE SHEET 1

SEE SHEET 3

SEE SHEET 5



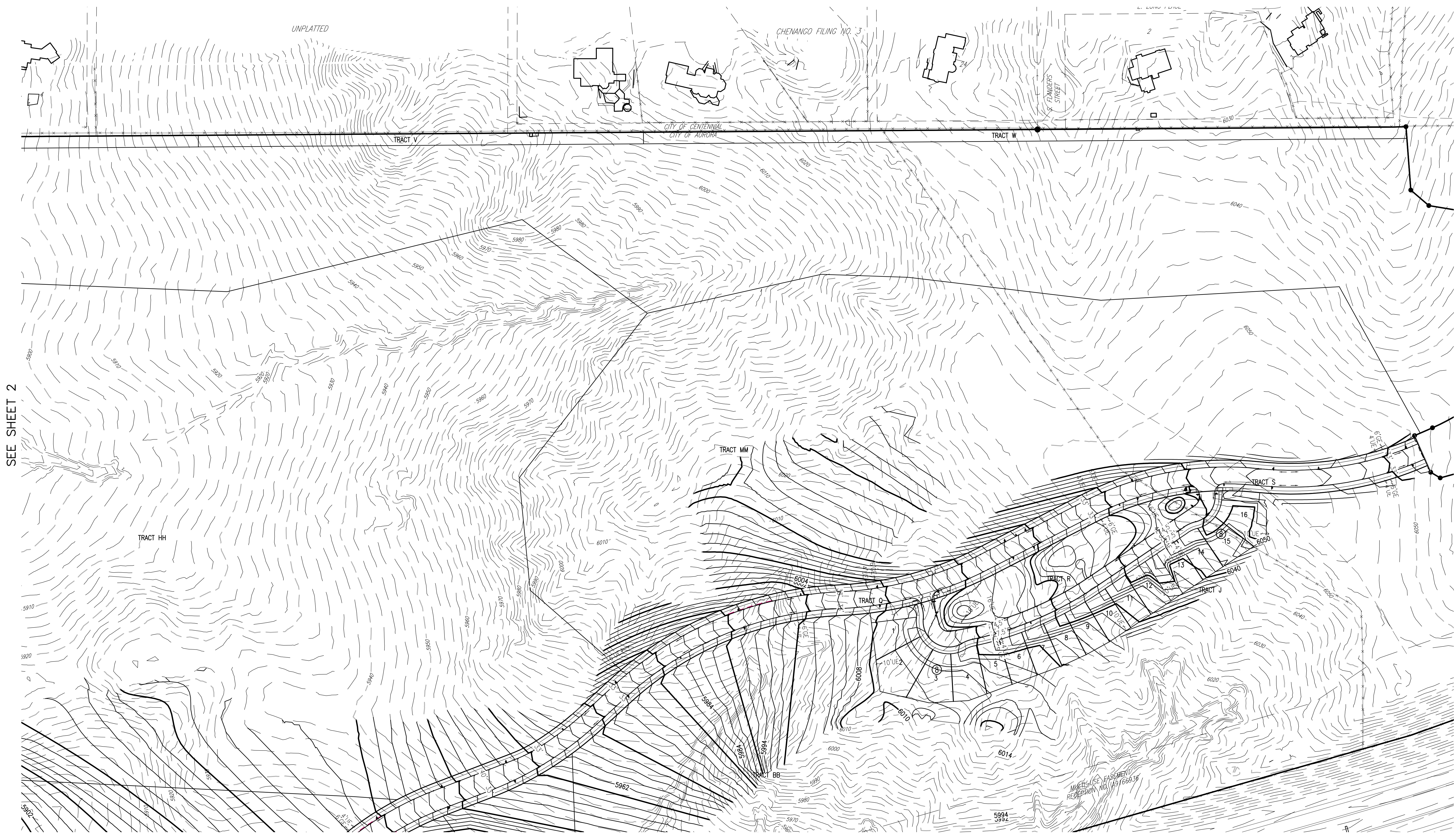
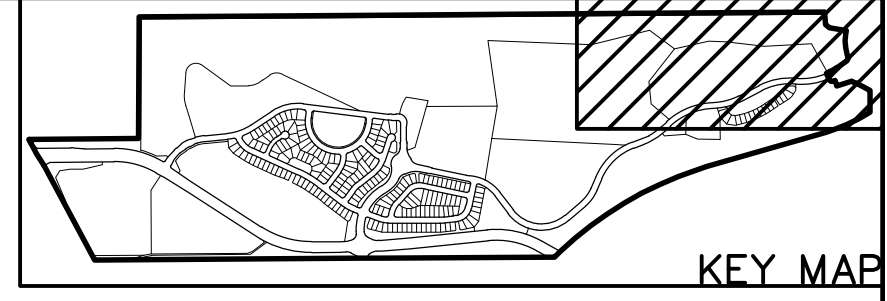
EMK CONSULTANTS, INC.
ENGINEERING & SURVEYING
LAND DEVELOPMENT
SERVICES AND SOLUTIONS
7006 SOUTH ALTON WAY, BLDG. F
CENTENNIAL, COLORADO 80112-2019
(303) 694-1520 www.EMKC.com



DEVELOPER
KINGSPPOINT LLC
c/o CASTLE ROCK DEVELOPMENT COMPANY
3033 E FIRST AVENUE, SUITE 410
DENVER, COLORADO 80206
PHONE: (303) 394-5525
CONTACT: BRUCE STOKES

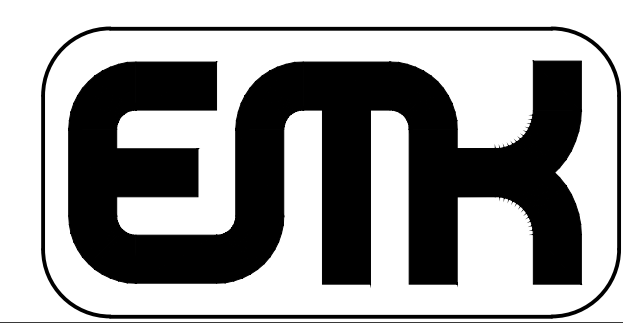
PRELIMINARY GRADING PLAN
KINGS POINT FILING NO. 1
CONTEXTUAL SITE PLAN
PREPARED: 03.15.17
REVISED: 09.07.18

KINGS POINT CONTEXTUAL SITE PLAN NO. 1
CONTEXTUAL SITE PLAN WITH WAIVERS
A PART OF SECTIONS 33 AND 34, TOWNSHIP 5 SOUTH, RANGE 66 WEST OF THE 6TH P.M.
CITY OF AURORA, COUNTY OF ARAPAHOE, STATE OF COLORADO

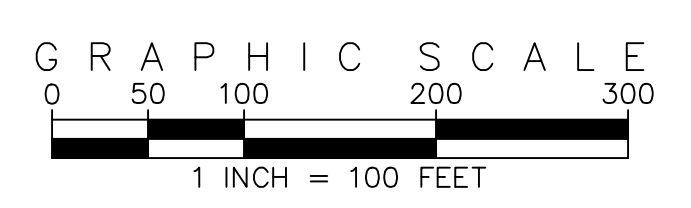


SEE SHEET 2

SEE SHEET 6



EMK CONSULTANTS, INC.
ENGINEERING SURVEYING
LAND DEVELOPMENT
SERVICES AND SOLUTIONS
7006 SOUTH ALTON WAY, BLDG. F
CENTENNIAL, COLORADO 80112-2019
(303) 694-1520 www.EMKC.com

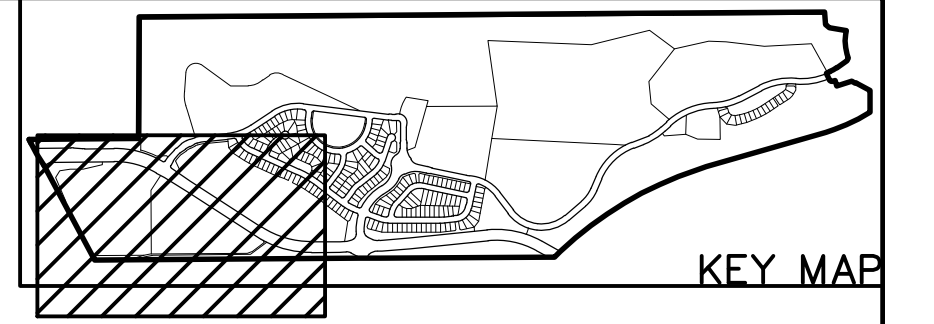


DEVELOPER
KINGSPPOINT LLC
c/o CASTLE ROCK DEVELOPMENT COMPANY
3033 E FIRST AVENUE, SUITE 410
DENVER, COLORADO 80206
PHONE: (303) 394-5525
CONTACT: BRUCE STOKES

PRELIMINARY GRADING PLAN
KINGS POINT FILING NO. 1
CONTEXTUAL SITE PLAN
PREPARED: 03.15.17
REVISED: 09.07.18
SHEET 3 OF 6

KINGS POINT CONTEXTUAL SITE PLAN NO. 1
CONTEXTUAL SITE PLAN WITH WAIVERS
A PART OF SECTIONS 33 AND 34, TOWNSHIP 5 SOUTH, RANGE 66 WEST OF THE 6TH P.M.
CITY OF AURORA, COUNTY OF ARAPAHOE, STATE OF COLORADO

SEE SHEET 1

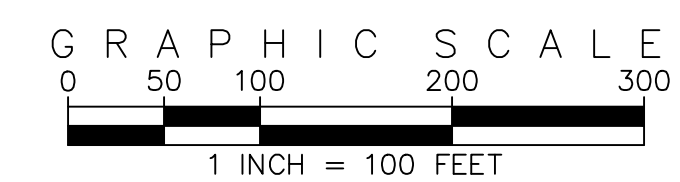


ASHBROOKE EXECUTIVE PARK / 17 MILE
HOUSE SUBDIVISION EXEMPTION PLAT
BOOK 189, PAGES 77-78

SEE SHEET 5



EMK CONSULTANTS, INC.
ENGINEERING & SURVEYING
LAND DEVELOPMENT
SERVICES AND SOLUTIONS
7006 SOUTH ALTON WAY, BLDG. F
CENTENNIAL, COLORADO 80112-2019
(303) 694-1520 www.EMKC.com

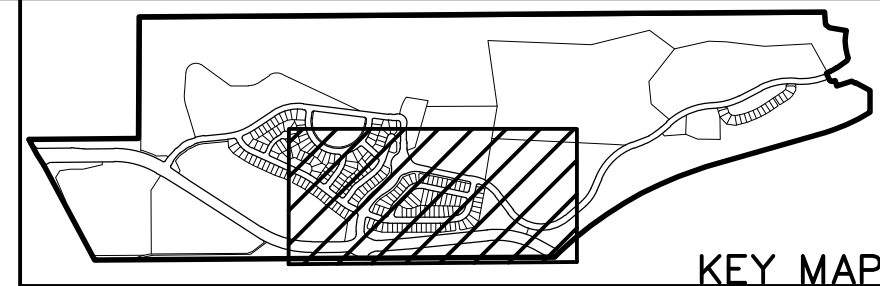


DEVELOPER
KINGSPPOINT LLC
c/o CASTLE ROCK DEVELOPMENT COMPANY
3033 E FIRST AVENUE, SUITE 410
DENVER, COLORADO 80206
PHONE: (303) 394-5525
CONTACT: BRUCE STOKES

PRELIMINARY GRADING PLAN
KINGS POINT FILING NO. 1
CONTEXTUAL SITE PLAN
PREPARED: 03.15.17
REVISED: 09.07.18

SHEET 4 OF 6

KINGS POINT CONTEXTUAL SITE PLAN NO. 1
CONTEXTUAL SITE PLAN WITH WAIVERS
A PART OF SECTIONS 33 AND 34, TOWNSHIP 5 SOUTH, RANGE 66 WEST OF THE 6TH P.M.
CITY OF AURORA, COUNTY OF ARAPAHOE, STATE OF COLORADO



SEE SHEET 2

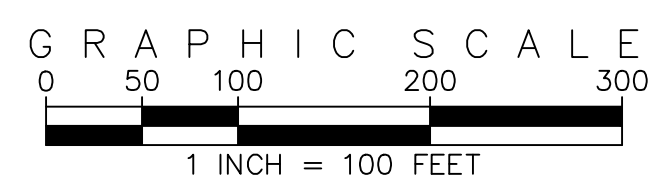


SEE SHEET 4

SEE SHEET 6



EMK CONSULTANTS, INC.
ENGINEERING & SURVEYING
LAND DEVELOPMENT
SERVICES AND SOLUTIONS
7006 SOUTH ALTON WAY, BLDG. F
CENTENNIAL, COLORADO 80112-2019
(303) 694-1520 www.EMKC.com

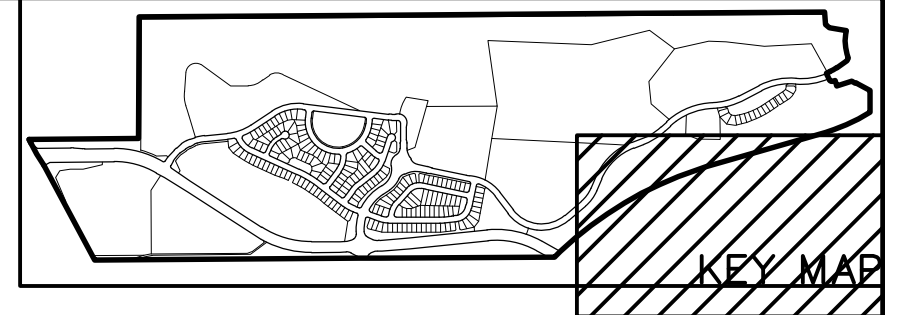


DEVELOPER
KINGSPPOINT LLC
c/o CASTLE ROCK DEVELOPMENT COMPANY
3033 E FIRST AVENUE, SUITE 410
DENVER, COLORADO 80206
PHONE: (303) 394-5525
CONTACT: BRUCE STOKES

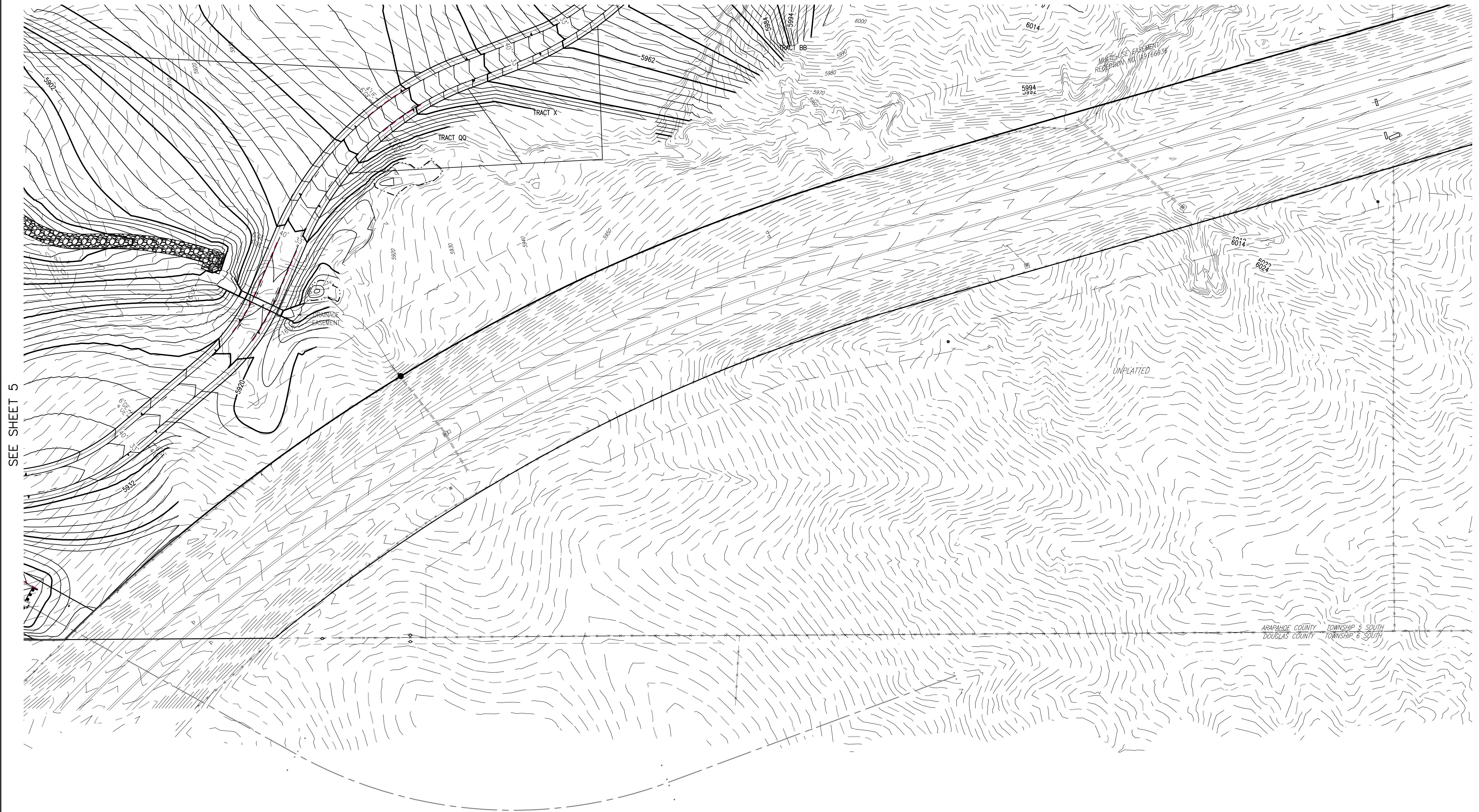
PRELIMINARY GRADING PLAN
KINGS POINT FILING NO. 1
CONTEXTUAL SITE PLAN
PREPARED: 03.15.17
REVISED: 09.07.18

SHEET 5 OF 6

KINGS POINT CONTEXTUAL SITE PLAN NO. 1
CONTEXTUAL SITE PLAN WITH WAIVERS
A PART OF SECTIONS 33 AND 34, TOWNSHIP 5 SOUTH, RANGE 66 WEST OF THE 6TH P.M.
CITY OF AURORA, COUNTY OF ARAPAHOE, STATE OF COLORADO



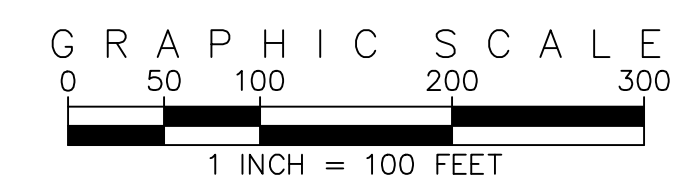
SEE SHEET 3



SEE SHEET 5



EMK CONSULTANTS, INC.
ENGINEERING & SURVEYING
LAND DEVELOPMENT
SERVICES AND SOLUTIONS
7006 SOUTH ALTON WAY, BLDG. F
CENTENNIAL, COLORADO 80112-2019
(303) 694-1520 www.EMKC.com



DEVELOPER
KINGSPPOINT LLC
c/o CASTLE ROCK DEVELOPMENT COMPANY
3033 E FIRST AVENUE, SUITE 410
DENVER, COLORADO 80206
PHONE: (303) 394-5525
CONTACT: BRUCE STOKES

PRELIMINARY GRADING PLAN
KINGS POINT FILING NO. 1
CONTEXTUAL SITE PLAN
PREPARED: 03.15.17
REVISED: 09.07.18

SHEET 6 OF 6