

1 SITE PLAN
1" = 40'-0"

FLEXENTIAL

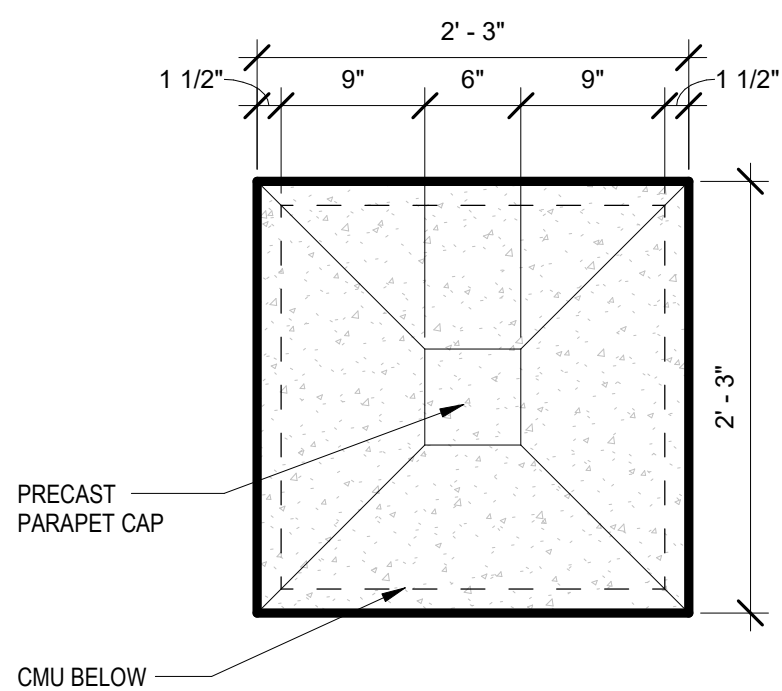
THE
MULHERN GROUP
ARCHITECTURE PLANNING INTERIORS

1400 GLENAM PLACE, SUITE 300 DENVER, COLORADO 80202
T: 303.297.3334 F: 303.293.2601 W: THEMULHERNGROUP.COM

11900 E. CORNELL AVE. AURORA CO 80014

[illegible]

AS-1.01



2'-0"

2'-4"

GATE OPERATOR LIFT MASTER ELITE CSW-24VDC SWING OPERATOR, OR SIMILAR

STUB UP LOCATION

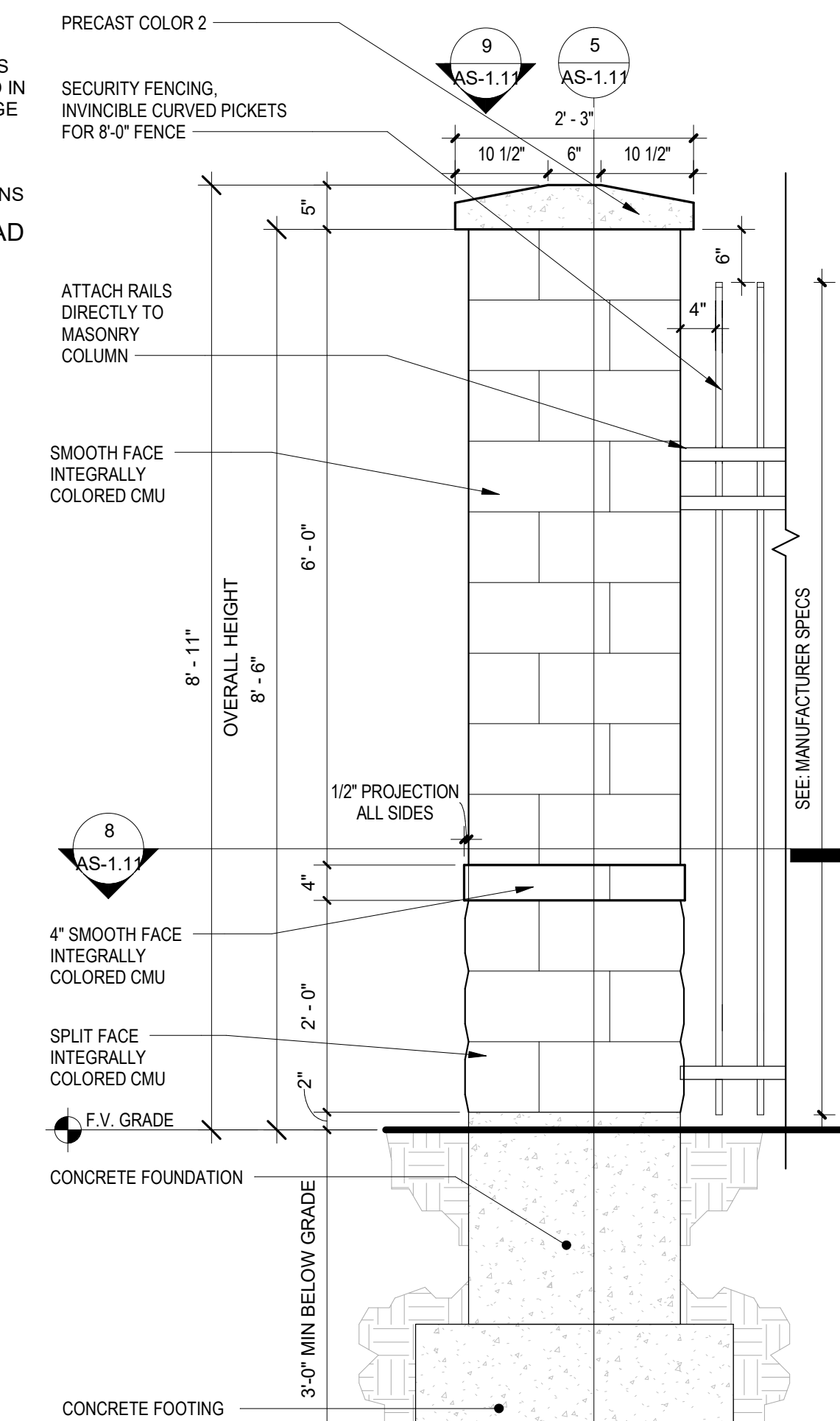
1'-0"

2'-8"

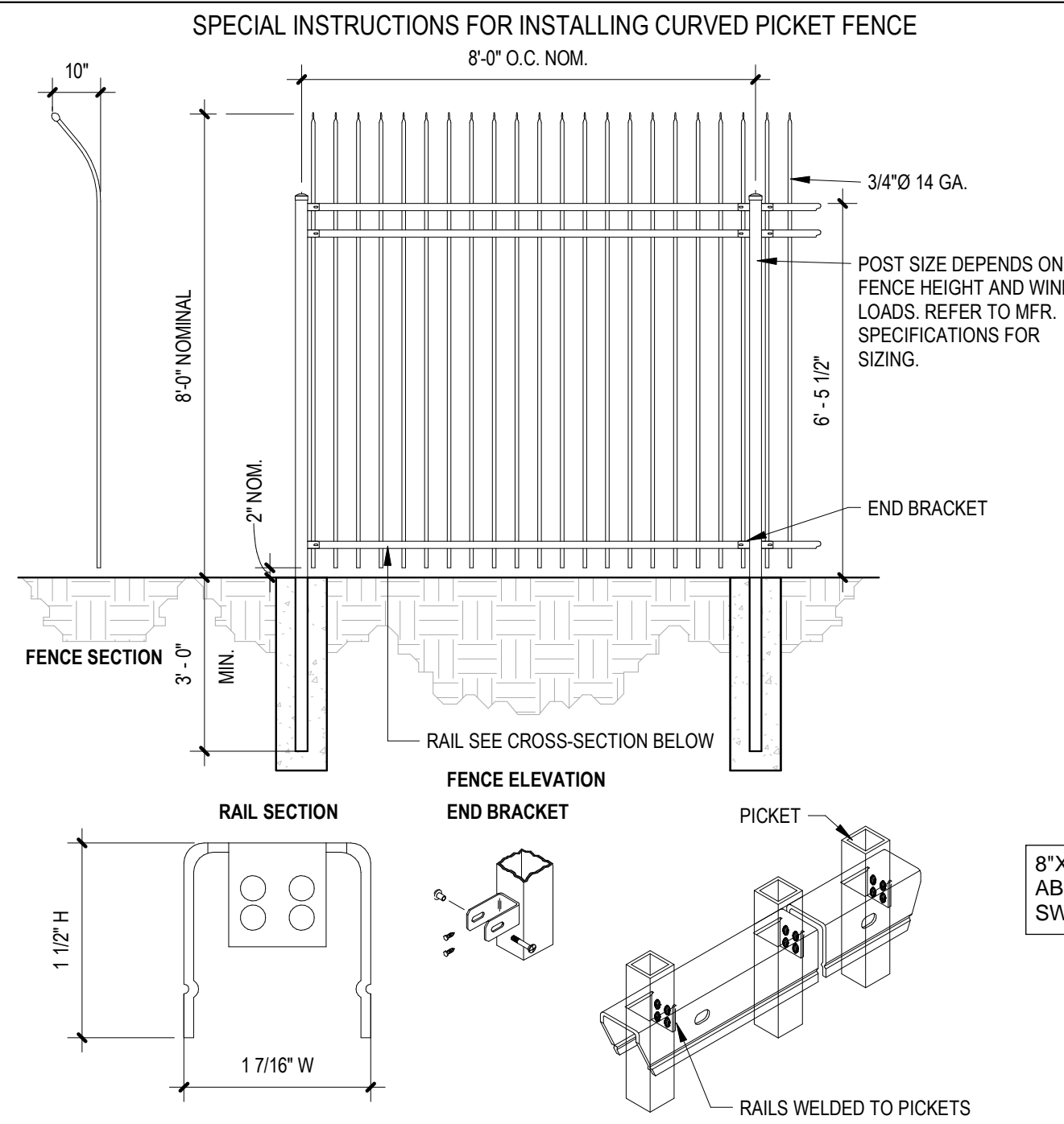
NOTE: ALL MEASUREMENTS WILL NEED TO BE VERIFIED ON THE FIELD AFTER THE HUB POST HAS BEEN SET.

Diagram illustrating the gate operator lift master elite CSW-24VDC swing operator, or similar, showing the drive lane and a 2'-0" dimension.

GATE ACCESS CONTROL
3/8" = 1'-0"



7 CMU COLUMN
3/4" = 1'-0"



Technical drawing of a 6-foot high, 3-foot wide hollow concrete masonry unit (CMU) wall section. The drawing shows a cross-section of the wall with two vertical hollow cores. The wall is constructed from CMU units with a smooth face and a split face. The top of the wall is finished with a 5-inch thick concrete cap. The drawing includes various dimensions and callouts for reinforcement and construction details.

Dimensions:

- Overall height: 6'-0"
- Overall width: 3'-0"
- Top concrete cap thickness: 5"
- Core width: 10 1/2"
- Core spacing: 6"
- Core depth: 10 1/2"
- Core depth (split face): 8'-4"
- Core depth (smooth face): 8'-11"
- Core depth (split face): 4"
- Core depth (smooth face): 2'-0"
- Core depth (split face): 1'-10"
- Core depth (smooth face): 2'-0"
- Core depth (split face): 3'-0"
- Core depth (smooth face): 1'-2"
- Core depth (split face): 3'-0"

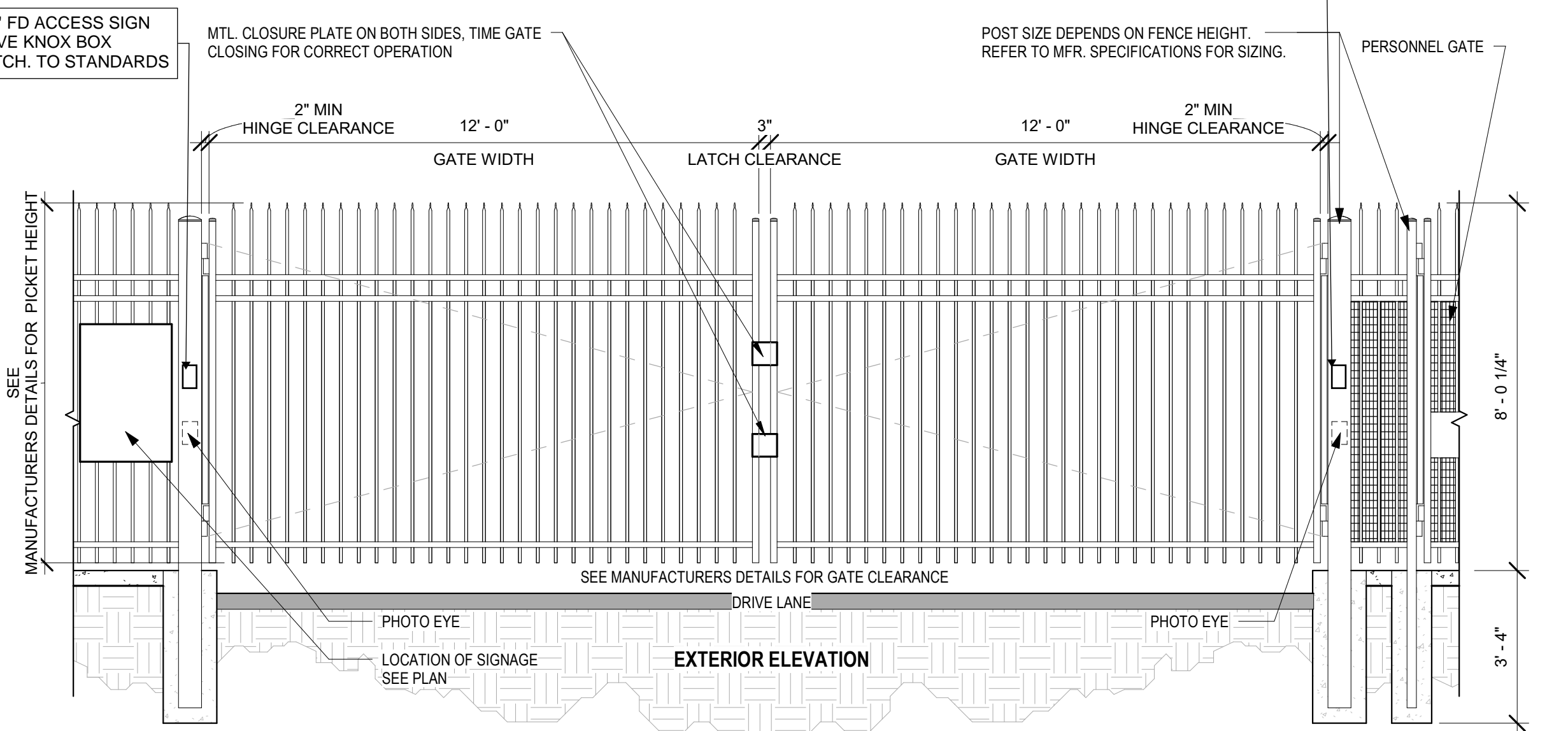
Reinforcement and Details:

- #5 VERTICAL BARS
- SMOOTH FACE INTEGRALLY COLORED CMU
- SPLIT FACE INTEGRALLY COLORED CMU
- HOLLOW
- WEEPS 2 EACH SIDE
- (3) #4 TIES @ 3' O.C. TOP AND @ 12' REMAINDER
- (8) #8 VERT. IN CONC.
- #5 DOWELS
- (3) #5 EA. WAY BOT

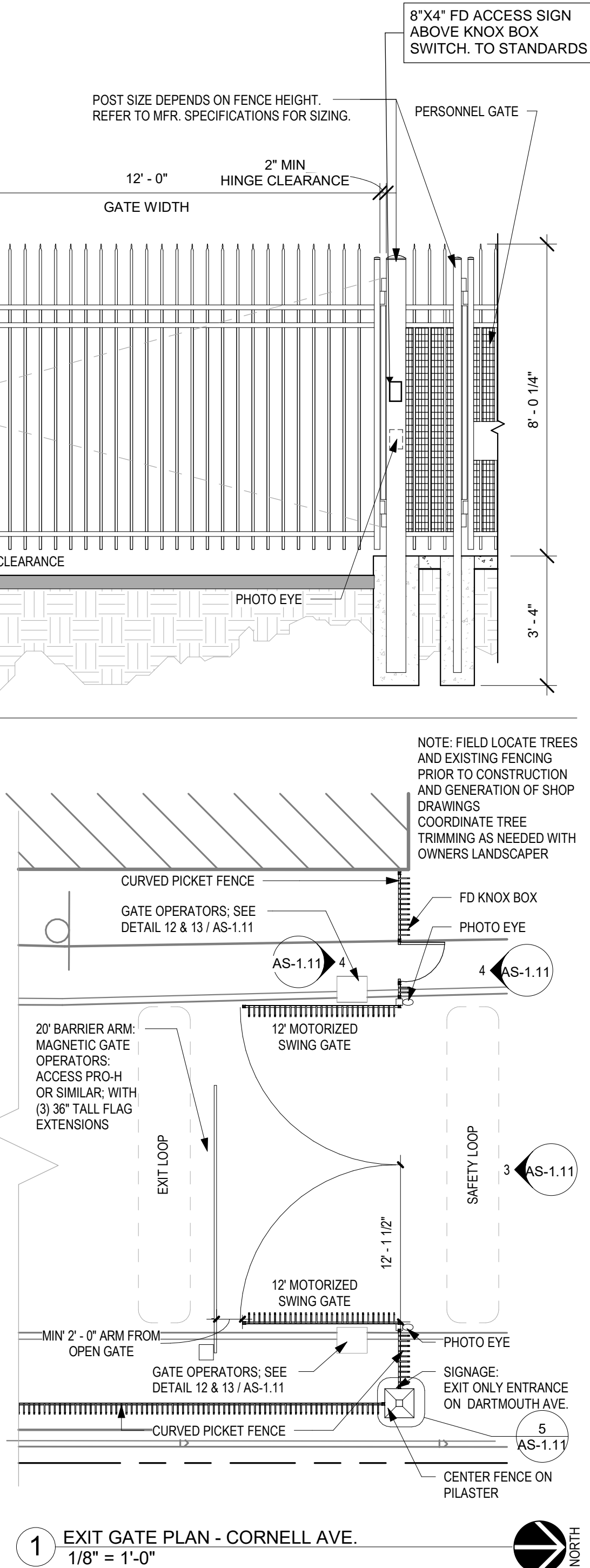
Callouts:

- 9 AS-1.11
- 10 AS-1.11
- 8 AS-1.11

CMU COLUMN SECTION
3/4" = 1'-0"

[illegible]

2 ENTRANCE GATE PLAN - DARTMOUTH AVE.
1/8" = 1'-0"



1 EXIT GATE PLAN - CORNELL AVE.
1/8" = 1'-0"

The information contained in this drawing file is intended for use only on this project. Unauthorized reproduction or use in other projects is not permitted. The Mulhern Group, Ltd. assumes no liability for unauthorized reproduction, changes to or use of the information contained herein. The information contained herein as provided on an "as-is" basis. The Mulhern Group disclaims all warranties with regard to the data contained in this drawing file and to the performance of the delivery media, including all implied warranties of fitness. The Mulhern Group, Ltd. assumes no obligations or liabilities for damages, including, but not limited to, consequential damages arising out of or in connection with the use or performance of this drawing file and its delivery media.

#	DATE	REVISION
1	09/26/2023	CD'S
PROJECT NUMBER		22036
DRAWN BY		RC
CHECKED BY		BDL
SITE DETAILS		

PROJECT NUMBER	22036
DRAWN BY	RC
CHECKED BY	BDL
SITE DETAILS	

AS-1.11