

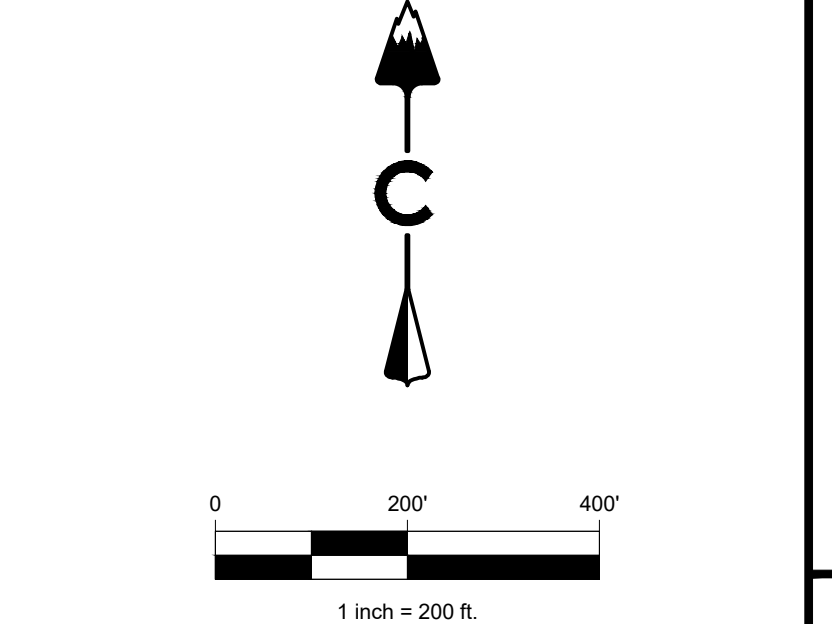
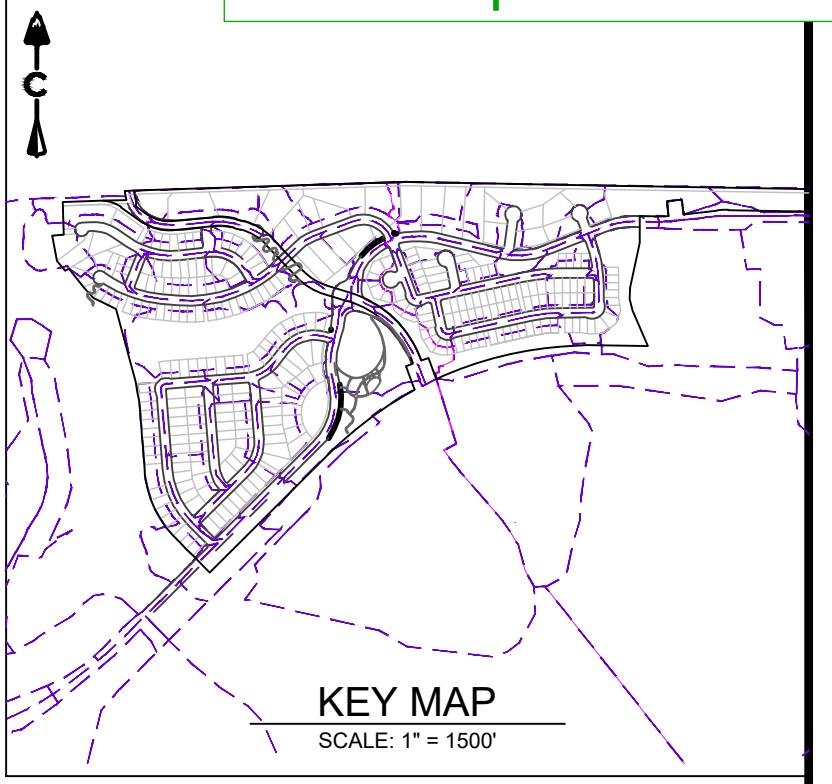
DATE	BY	REVISION DESCRIPTION
XXXXXX	XX	
1	DRAFT	

PRAIRIE POINT, FILING NO.2  
AURORA, CO  
PRELIMINARY DRAINAGE REPORT  
OVERALL DRAINAGE MAP

Do these notes 4, 6 & 7 apply to this PDR?

NOT FOR CONSTRUCTION

DESIGNED BY: JK  
DRAWN BY: DG  
CHECKED BY: MHN  
JOB NO. 19-032  
SHEET 1



**LEGEND**

EXISTING      PROPOSED

**BASIN DESIGNATION**  
5 YEAR COEFFICIENTS  
100 YEAR COEFFICIENTS

**DESIGN POINT**  
DIRECTIONAL FLOW ARROW  
EMERGENCY OVERFLOW ROUTE  
PROPOSED DRAINAGE BASIN  
EXISTING DRAINAGE BASIN  
PROPOSED MAJOR CONTOUR  
PROPOSED MINOR CONTOUR  
EXISTING MAJOR CONTOUR  
EXISTING MINOR CONTOUR  
EASEMENT  
RIGHT OF WAY (R.O.W.)  
CENTERLINE  
PROJECT BOUNDARY  
PROPOSED STORM & STUB OUT  
EXISTING STORM & STUB OUT  
STORM MANHOLES  
STORM INLETS  
FES, FOREBAY, & TRICKLE CHANNEL  
OUTLET STRUCTURE  
CRUSHER FINES  
MAINTENANCE ACCESS  
RIPRAP  
FLOODPLAIN  
WETLAND  
LIMITS OF CONSTRUCTION  
MAJOR DRAINAGE BASIN  
DRAINAGE SWALE  
PART OF ISP EAST SUBMITTAL

- NOTES:**
1. CITY OF AURORA PLAN REVIEW IS ONLY FOR GENERAL CONFORMANCE WITH THE CITY OF AURORA DESIGN CRITERIA AND THE CITY CODE. THE CITY IS NOT RESPONSIBLE FOR THE ACCURACY AND ADEQUACY OF THE DESIGN, OF DIMENSIONS AND ELEVATIONS WHICH SHALL BE CONFIRMED AND CORRELATED AT THE JOB SITE. THE CITY OF AURORA, THROUGH THE APPROVAL OF THIS DOCUMENT, ASSUMES NO RESPONSIBILITY FOR THE COMPLETENESS AND/OR ACCURACY OF THIS DOCUMENT.
2. STORM SEWER SYSTEM IN COMBINATION WITH THE STREETS WILL BE SIZED FOR THE 100 YEAR STORM EVENT.
3. PONDS SHOWN HEREIN ARE SCHEMATIC ONLY. ACTUAL SIZE, SHAPE, AND LOCATION WILL VARY AS SITE DESIGN PROGRESSES.
4. THIS MASTER DRAINAGE PLAN HAS BEEN PREPARED BASED UPON THE BEST AVAILABLE INFORMATION AT THIS TIME. CONCEPTS, DRAINAGE PATTERNS, AND OFFSITE FACILITIES SHALL BE CONFIRMED IN THE SUBSEQUENT PRELIMINARY AND FINAL DRAINAGE PLANS FOR THE PROPERTY.
5. ALL STORM INFRASTRUCTURE IS PRIVATE EXCEPT AS NOTED AND SIZED FOR THE 100 YEAR EVENT. ALL STORM INFRASTRUCTURE WILL BE MAINTAINED BY THE METRO DISTRICT EXCEPT AS NOTED.
6. THE STORM SEWER MAY NOT BE IN ITS FINAL LOCATION. ADDITIONAL STORM SEWER MAY BE REQUIRED AND WILL BE REFINED WITH THE PRELIMINARY DRAINAGE REPORT. DRAINAGE EASEMENTS WILL BE PROVIDED AS NEEDED.
7. THE BASIS OF THE KRAGELUND TRIBUTARY FLOOD HAZARD AREAS IS THE CHERRY CREEK TRIBUTARY MINOR TRIBUTARY FHAD PREPARED BY DEWBERRY, AND APPROVED IN 2021.
8. WORK IN THE FLOODPLAIN REQUIRES A FLOODPLAIN DEVELOPMENT PERMIT.
9. WORK IN FLOODWAY REQUIRES CLOMR OR NO RISE CERTIFICATION LETTER.

**APPROVED FOR ONE YEAR FROM THIS DATE**

CITY ENGINEER \_\_\_\_\_ DATE \_\_\_\_\_

WATER DEPARTMENT \_\_\_\_\_ DATE \_\_\_\_\_

**Peak Flow Summary - Basin A**

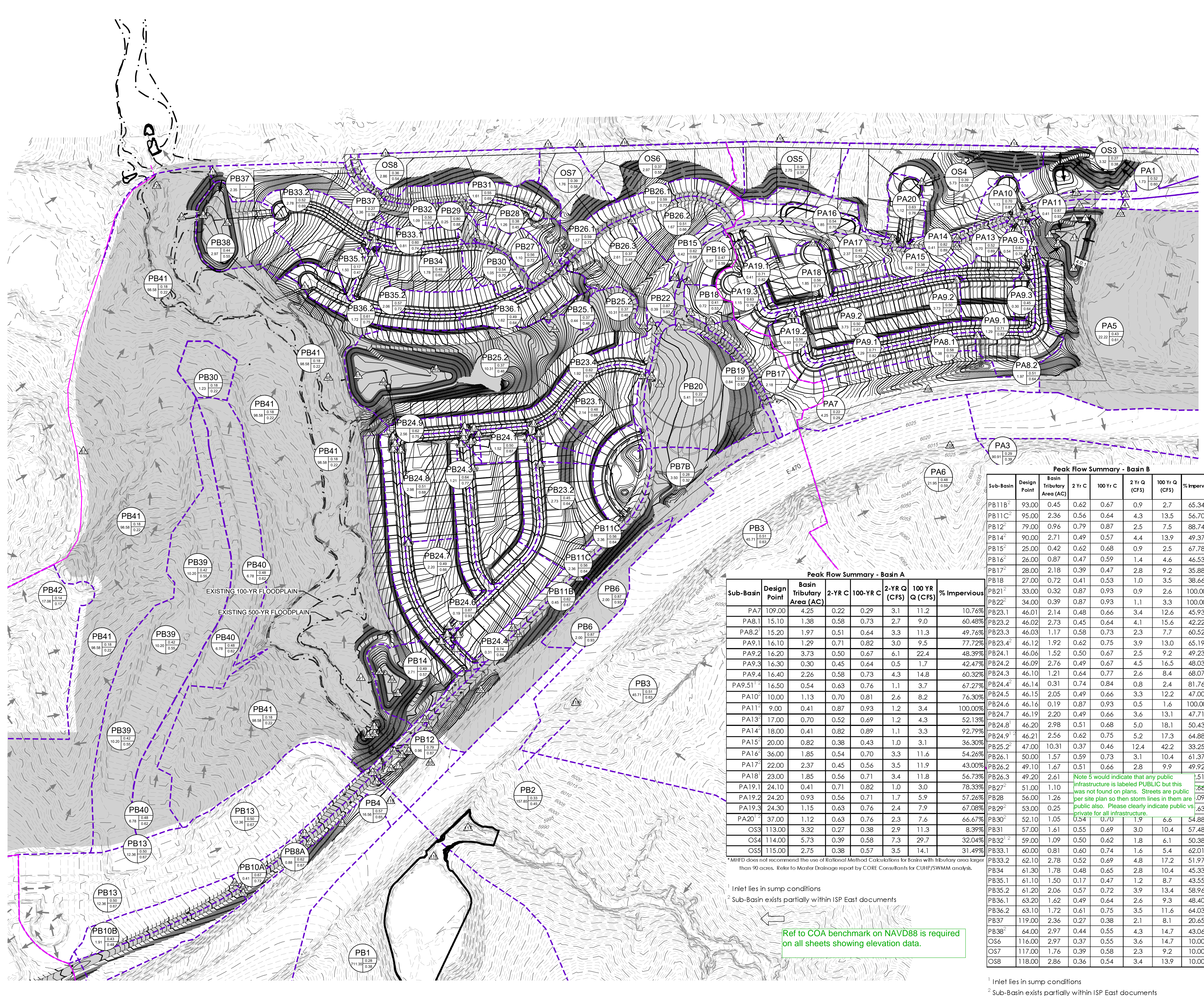
Sub-Basin	Design Point	Basin Tributary Area (AC)	2-YR C	100-YR C	2-YR Q (CFS)	100 YR Q (CFS)	% Impervious
PA7	109.00	4.25	0.22	0.29	3.1	11.2	10.76%
PA8.1	15.10	1.38	0.58	0.73	2.7	9.0	60.48%
PA8.2	15.20	1.97	0.51	0.64	3.3	11.3	49.76%
PA9.1	16.10	1.29	0.71	0.82	3.0	9.5	77.72%
PA9.2	16.20	3.73	0.50	0.67	6.1	22.4	48.39%
PA9.3	16.30	0.30	0.45	0.64	0.5	1.7	42.47%
PA9.4	16.40	2.26	0.58	0.73	4.3	14.8	60.32%
PA9.5 <sup>1</sup>	16.50	0.54	0.63	0.76	1.1	3.7	67.27%
PA10 <sup>1</sup>	10.00	1.13	0.70	0.81	2.6	8.2	76.30%
PA11 <sup>1</sup>	9.00	0.41	0.87	0.93	1.2	3.4	100.00%
PA13 <sup>1</sup>	17.00	0.70	0.52	0.69	1.2	4.3	52.13%
PA14 <sup>1</sup>	18.00	0.41	0.82	0.89	1.1	3.3	92.79%
PA15 <sup>1</sup>	20.00	0.82	0.38	0.43	1.0	3.1	36.30%
PA16 <sup>1</sup>	36.00	1.85	0.54	0.70	3.3	11.6	54.26%
PA17 <sup>1</sup>	22.00	2.37	0.45	0.56	3.5	11.9	43.00%
PA18 <sup>1</sup>	23.00	1.85	0.56	0.71	3.4	11.8	56.73%
PA19.1	24.10	0.41	0.71	0.82	1.0	3.0	78.33%
PA19.2	24.20	0.93	0.56	0.71	1.7	5.9	57.26%
PA19.3	24.30	1.15	0.63	0.76	2.4	7.9	67.08%
PA20 <sup>1</sup>	37.00	1.12	0.63	0.76	2.3	7.6	66.67%
OS3	113.00	3.32	0.27	0.38	2.9	11.3	8.39%
OS4	114.00	5.73	0.39	0.58	7.3	29.7	32.04%
OS5	115.00	2.75	0.38	0.57	3.5	14.1	31.49%

**Peak Flow Summary - Basin B**

Sub-Basin	Design Point	Basin Tributary Area (AC)	2-YR C	100-YR C	2-YR Q (CFS)	100 YR Q (CFS)	% Impervious
PB11B <sup>2</sup>	93.00	0.45	0.62	0.67	0.9	2.7	65.34%
PB11C <sup>2</sup>	95.00	2.36	0.56	0.64	4.3	13.5	56.70%
PB12 <sup>2</sup>	79.00	0.96	0.79	0.87	2.5	7.5	88.74%
PB14 <sup>2</sup>	90.00	2.71	0.49	0.57	4.4	13.9	49.37%
PB15 <sup>2</sup>	25.00	0.42	0.62	0.68	0.9	2.5	67.78%
PB16 <sup>2</sup>	26.00	0.87	0.47	0.59	1.4	4.6	46.53%
PB17 <sup>2</sup>	28.00	2.18	0.39	0.47	2.8	9.2	35.88%
PB18	27.00	2.72	0.41	0.53	1.0	3.5	38.66%
PB21 <sup>2</sup>	33.00	0.32	0.87	0.93	0.9	2.6	100.00%
PB22 <sup>2</sup>	34.00	0.39	0.87	0.93	1.1	3.3	100.00%
PB23.1	46.01	2.14	0.48	0.66	3.4	12.6	45.93%
PB23.2	46.02	2.73	0.45	0.64	4.1	15.6	42.22%
PB23.3	46.03	1.17	0.58	0.73	2.3	7.7	60.52%
PB23.4 <sup>1</sup>	46.12	1.92	0.62	0.75	3.9	13.0	65.19%
PB24.1	46.06	1.52	0.50	0.67	2.5	9.2	49.23%
PB24.2	46.09	2.76	0.49	0.67	4.5	16.5	48.03%
PB24.3	46.10	1.21	0.64	0.77	2.6	8.4	68.07%
PB24.4 <sup>1</sup>	46.14	0.31	0.74	0.84	0.8	2.4	81.76%
PB24.5	46.15	2.05	0.49	0.66	3.3	12.2	47.00%
PB24.6	46.16	0.19	0.87	0.93	0.5	1.6	100.00%
PB24.7	46.19	2.20	0.49	0.66	3.6	13.1	47.71%
PB24.8	46.20	2.98	0.51	0.68	5.0	18.1	50.43%
PB24.9 <sup>1</sup>	46.21	2.56	0.62	0.75	5.2	17.3	64.88%
PB25.2 <sup>2</sup>	47.00	10.31	0.37	0.46	12.4	42.2	33.25%
PB26.1	50.00	1.57	0.59	0.73	3.1	10.4	61.37%
PB26.2	49.10	1.67	0.51	0.66	2.8	9.9	49.92%
PB26.3	49.20	2.61	0.61	0.75	4.5	15.1	51.51%
PB27 <sup>2</sup>	51.00	1.10	0.54	0.70	1.9	6.6	54.88%
PB28	56.00	1.26	0.61	0.55	0.69	3.0	57.48%
PB29 <sup>2</sup>	53.00	0.25	0.50	0.62	1.8	6.1	50.38%
PB30 <sup>2</sup>	52.10	1.05	0.54	0.70	1.9	6.6	54.88%
PB31	57.00	1.61	0.55	0.69	3.0	10.4	57.48%
PB32 <sup>1,2</sup>	59.00	1.09	0.50	0.62	1.8	6.1	50.38%
PB33.1	60.00	0.81	0.60	0.74	1.6	5.4	62.01%
PB33.2	62.10	2.78	0.52	0.69	4.8	17.2	51.97%
PB34	61.30	1.78	0.48	0.65	2.8	10.4	45.33%
PB35.1	61.10	1.50	0.17	0.47	1.2	8.7	43.55%
PB35.2	62.00	2.06	0.57	0.72	3.9	13.4	58.96%
PB36.1	63.20	1.62	0.49	0.64	2.6	9.3	48.40%
PB36.2	63.10	1.72	0.61	0.75	3.5	11.6	64.03%
PB37	119.00	2.36	0.27	0.38	2.1	8.1	20.65%
PB38 <sup>2</sup>	64.00	2.97	0.44	0.55	4.3	14.7	43.06%
OS6	116.00	2.97	0.37	0.55	3.6	14.7	10.00%
OS7	117.00	1.76	0.39	0.58	2.3	9.2	10.00%
OS8	118.00	2.86	0.36	0.54	3.4	13.9	10.00%

<sup>1</sup> Inlet lies in sump conditions  
<sup>2</sup> Sub-Basin exists partially within ISP East documents

Ref to COA benchmark on NAVD88 is required on all sheets showing elevation data.





Site plan and drainage plan submitted are required to match. Some differences are that site plan appears to show ponds and S Ireland Way which are excluded here on the PD Plan.

Labels needed on existing contours

Please label any retaining walls and include a concept-level section with max ht, property line, any footer, shown.

Please include references to EDN or RSN for all adjacent plan sets.

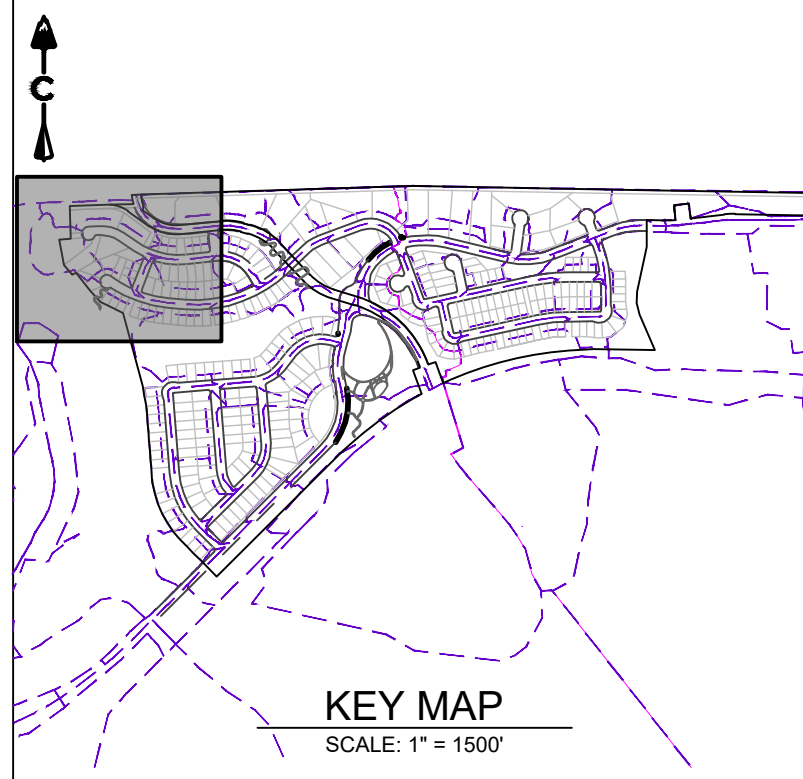
Show all easements for ponds and other drainage related infrastructure

Please label all sump inlets

In addition to the exis 100yr and 500yr limits shown here, show on all sheets:  
- Exis Floodway  
- Exist BFE's

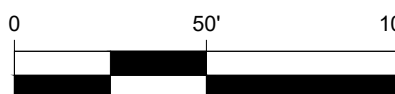
Antelope Creek construction is shown on a separate set of plans:  
- Please ref the RSN for those plans on all sheets (1662021)  
- Separate sheets are needed to show how this Prairie Point site ties into proposed new Antelope Creek grading.  
- Those separate sheets should also show proposed Floodplain limits and 100yr WSEL's

Show tract or easement to be dedicated for Antelope Creek per Antelope Creek plans.



KEY MAP

SCALE: 1" = 1500'



LEGEND

EXISTING	PROPOSED	
		BASIN DESIGNATION
		5 YEAR COEFFICIENTS
		100 YEAR COEFFICIENTS
		DESIGN POINT
		DIRECTIONAL FLOW ARROW
		EMERGENCY OVERFLOW ROUTE
		PROPOSED DRAINAGE BASIN
		EXISTING DRAINAGE BASIN
		PROPOSED MAJOR CONTOUR
		PROPOSED MINOR CONTOUR
		EXISTING MAJOR CONTOUR
		EXISTING MINOR CONTOUR
		EASEMENT
		RIGHT OF WAY (R.O.W.)
		CENTERLINE
		PROJECT BOUNDARY
		PROPOSED STORM & STUB OUT
		EXISTING STORM & STUB OUT
		STORM MANHOLES
		STORM INLETS
		FES, FOREBAY, & TRICKLE CHANNEL
		OUTLET STRUCTURE
		CRUSHER FINES
		MAINTENANCE ACCESS
		RIPRAP
		FLOODPLAIN
		WETLAND
		LIMITS OF CONSTRUCTION
		MAJOR DRAINAGE BASIN
		DRAINAGE SWALE
		PART OF ISP EAST SUBMITTAL

NOTES:

- CITY OF AURORA PLAN REVIEW IS ONLY FOR GENERAL CONFORMANCE WITH THE CITY OF AURORA DESIGN CRITERIA AND THE CITY CODE. THE CITY IS NOT RESPONSIBLE FOR THE ACCURACY AND ADEQUACY OF THE DESIGN, OF DIMENSIONS AND ELEVATIONS WHICH SHALL BE CONFIRMED AND CORRELATED AT THE JOB SITE. THE CITY OF AURORA, THROUGH THE APPROVAL OF THIS DOCUMENT, ASSUMES NO RESPONSIBILITY FOR THE COMPLETENESS AND/OR ACCURACY OF THIS DOCUMENT.
- STORM SEWER SYSTEM IN COMBINATION WITH THE STREETS WILL BE SIZED FOR THE 100 YEAR STORM EVENT.
- PONDS SHOWN HEREIN ARE SCHEMATIC ONLY. ACTUAL SIZE, SHAPE, AND LOCATION WILL VARY AS SITE DESIGN PROGRESSES.
- THIS MASTER DRAINAGE PLAN HAS BEEN PREPARED BASED UPON THE BEST AVAILABLE INFORMATION AT THIS TIME. CONCEPTS, DRAINAGE PATTERNS, AND OFFSITE FACILITIES SHALL BE CONFIRMED IN THE SUBSEQUENT PRELIMINARY AND FINAL DRAINAGE PLANS FOR THE PROPERTY.
- ALL STORM INFRASTRUCTURE IS PRIVATE EXCEPT AS NOTED AND SIZED FOR THE 100 YEAR EVENT. ALL STORM INFRASTRUCTURE WILL BE MAINTAINED BY THE METRO DISTRICT EXCEPT AS NOTED.
- THE STORM SEWER MAY NOT BE IN ITS FINAL LOCATION. ADDITIONAL STORM SEWER MAY BE REQUIRED AND WILL BE REFINED WITH THE PRELIMINARY DRAINAGE REPORT. DRAINAGE EASEMENTS WILL BE PROVIDED AS NEEDED.
- THE BASIS OF THE KRAGELUND TRIBUTARY FLOOD HAZARD AREAS IS THE CHERRY CREEK TRIBUTARY MINOR TRIBUTARY FHAD PREPARED BY DEWBERRY, AND APPROVED IN 2021.
- WORK IN THE FLOODPLAIN REQUIRES A FLOODPLAIN DEVELOPMENT PERMIT.
- WORK IN FLOODWAY REQUIRES CLOMR OR NO RISE CERTIFICATION LETTER.

PRAIRIE POINT, FILING NO.2

AURORA, CO

PRELIMINARY DRAINAGE REPORT  
DETAILED DRAINAGE MAP (1 OF 8)

NOT FOR  
CONSTRUCTION

DESIGNED BY: JK  
DRAWN BY: DG  
CHECKED BY: MHN

JOB NO.  
19-032

SHEET  
2

Know what's below.  
Call before you dig.



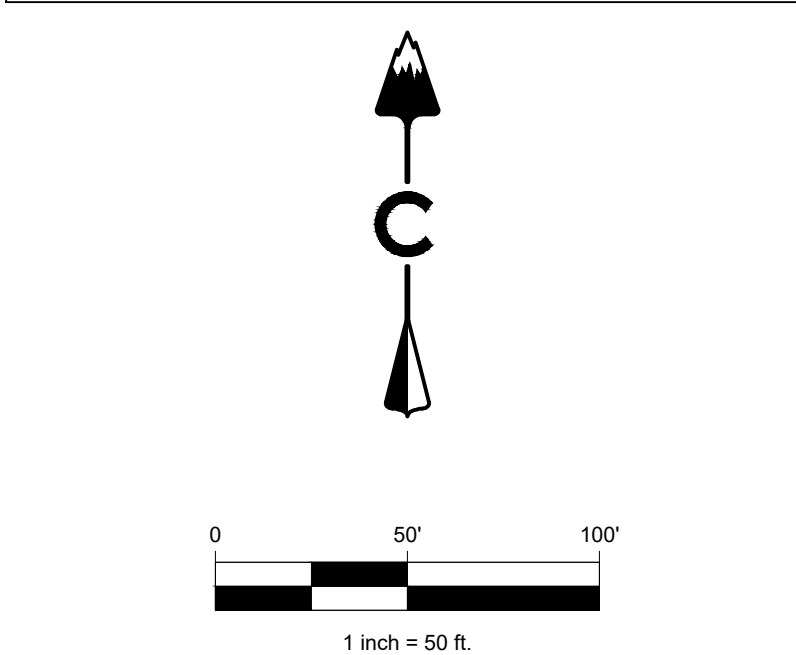
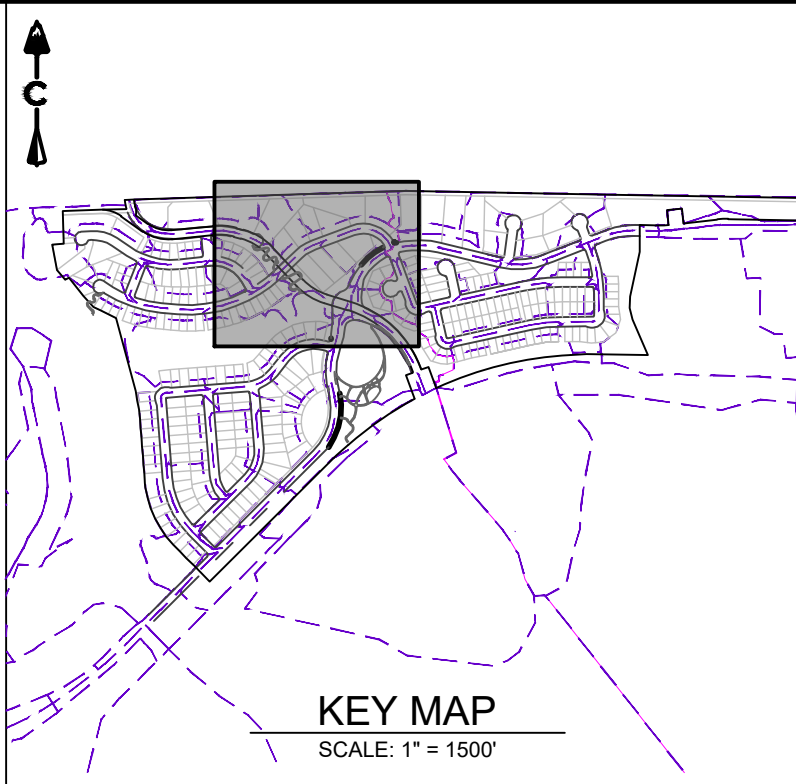
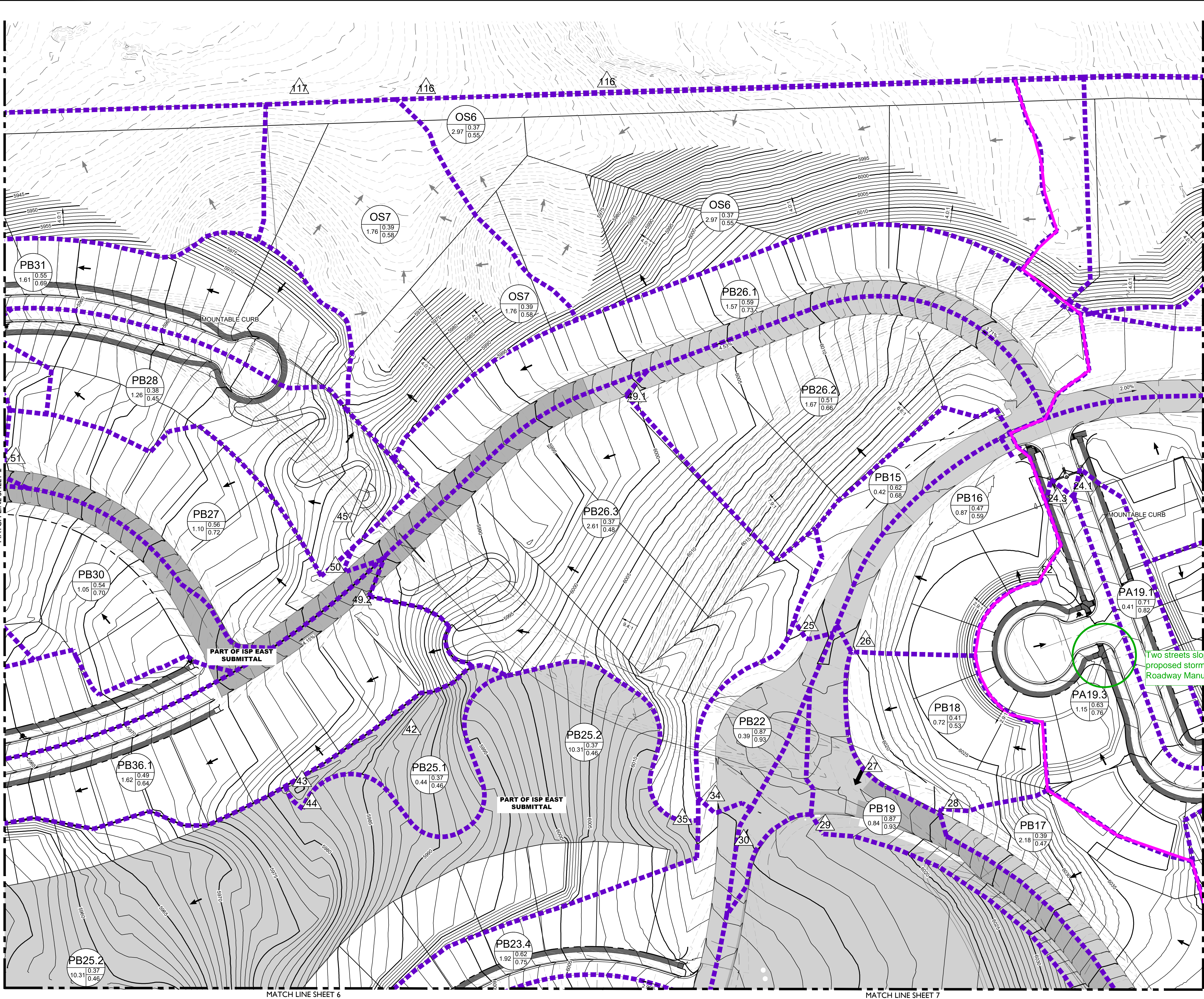
#	REVISION DESCRIPTION	DATE	BY
1	DRAFT	XXXXXX	XX

CORE CONSULTANTS, INC.  
3473 S. BROADWAY  
AURORA, CO 80013  
303.703.4444  
LIVEYOURCORE.COM

CORE

LAND DEVELOPMENT  
ENERGY  
PUBLIC INFRASTRUCTURE





LEGEND		
EXISTING	PROPOSED	
		BASIN DESIGNATION
		5 YEAR COEFFICIENTS
		100 YEAR COEFFICIENTS
		DESIGN POINT
		DIRECTIONAL FLOW ARROW
		EMERGENCY OVERFLOW ROUTE
		PROPOSED DRAINAGE BASIN
		EXISTING DRAINAGE BASIN
		PROPOSED MAJOR CONTOUR
		PROPOSED MINOR CONTOUR
		EXISTING MAJOR CONTOUR
		EXISTING MINOR CONTOUR
		EASEMENT
		RIGHT OF WAY (R.O.W.)
		CENTERLINE
		PROJECT BOUNDARY
		PROPOSED STORM & STUB OUT
		EXISTING STORM & STUB OUT
		STORM MANHOLES
		STORM INLETS
		FES, FOREBAY, & TRICKLE CHANNEL
		OUTLET STRUCTURE
		CRUSHER FINES
		MAINTENANCE ACCESS
		RIPRAP
		FLOODPLAIN
		WETLAND
		LIMITS OF CONSTRUCTION
		MAJOR DRAINAGE BASIN
		DRAINAGE SWALE
		PART OF ISP EAST
		TIDAL

- Two streets sloping to one within 300' of exis or proposed storm lines require inlets per COA Roadway Manual.
1. CITY OF AURORA PLAN REVIEW IS ONLY FOR GENERAL CONFORMANCE WITH THE CITY OF AURORA DESIGN CRITERIA AND THE CITY CODE. THE CITY IS NOT RESPONSIBLE FOR THE ACCURACY AND ADEQUACY OF THE DESIGN, OF DIMENSIONS AND ELEVATIONS WHICH SHALL BE CONFIRMED AND CORRELATED AT THE JOB SITE. THE CITY OF AURORA, THROUGH THE APPROVAL OF THIS DOCUMENT, ASSUMES NO RESPONSIBILITY FOR THE COMPLETENESS AND/OR ACCURACY OF THIS DOCUMENT.
  2. STORM SEWER SYSTEM IN COMBINATION WITH THE STREETS WILL BE SIZED FOR THE 100 YEAR STORM EVENT.
  3. PONDS SHOWN HEREIN ARE SCHEMATIC ONLY. ACTUAL SIZE, SHAPE, AND LOCATION WILL VARY AS SITE DESIGN PROGRESSES.
  4. THIS MASTER DRAINAGE PLAN HAS BEEN PREPARED BASED UPON THE BEST AVAILABLE INFORMATION AT THIS TIME. CONCEPTS, DRAINAGE PATTERNS, AND OFFSITE FACILITIES SHALL BE CONFIRMED IN THE SUBSEQUENT PRELIMINARY AND FINAL DRAINAGE PLANS FOR THE PROPERTY.
  5. ALL STORM INFRASTRUCTURE IS PRIVATE EXCEPT AS NOTED AND SIZED FOR THE 100 YEAR EVENT. ALL STORM INFRASTRUCTURE WILL BE MAINTAINED BY THE METRO DISTRICT EXCEPT AS NOTED. THE STORM SEWER MAY NOT BE IN ITS FINAL LOCATION. ADDITIONAL STORM SEWER MAY BE REQUIRED AND WILL BE REFINED WITH THE PRELIMINARY DRAINAGE REPORT. DRAINAGE EASEMENTS WILL BE PROVIDED AS NEEDED.
  7. THE BASIS OF THE KRAGELUND TRIBUTARY FLOOD HAZARD AREAS IS THE CHERRY CREEK TRIBUTARY MINOR TRIBUTARY FHAD PREPARED BY DEWBERRY, AND APPROVED IN 2021.
  8. WORK IN THE FLOODPLAIN REQUIRES A FLOODPLAIN DEVELOPMENT PERMIT.
  9. WORK IN FLOODWAY REQUIRES CLOMR OR NO RISE CERTIFICATION LETTER.

CORE CONSULTANTS, INC.  
3473 S. BROADWAY  
DENVER, CO 80113  
303.703.4444  
LIVE@YOURCORE.COM

**CORE**

Know what's below.  
Call before you dig.  
**811**

#	REVISION DESCRIPTION	DATE	BY
1	DRAFT	XXXXXX	XXX

**PRAIRIE POINT, FILING NO.2**  
AURORA, CO

PRELIMINARY DRAINAGE REPORT  
DETAILED DRAINAGE MAP (2 OF 8)

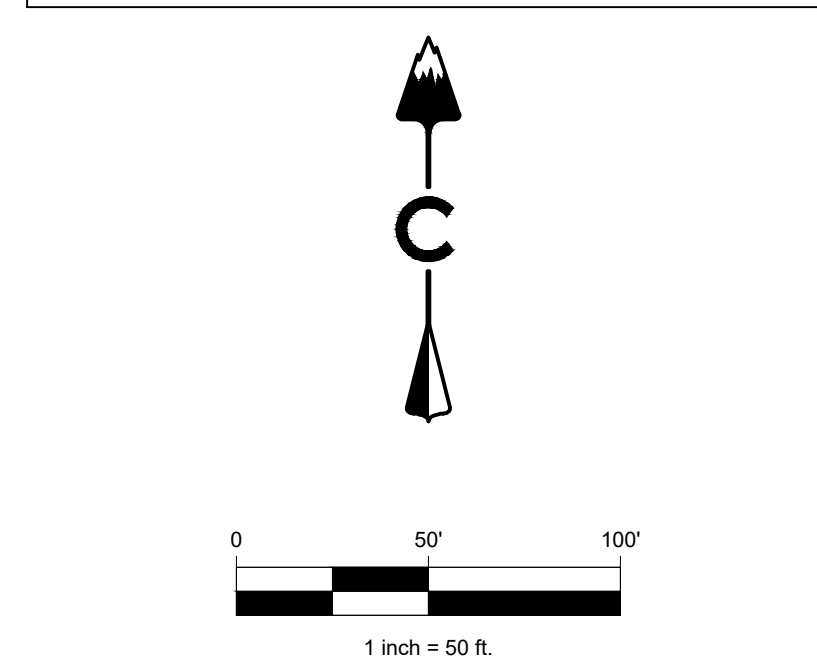
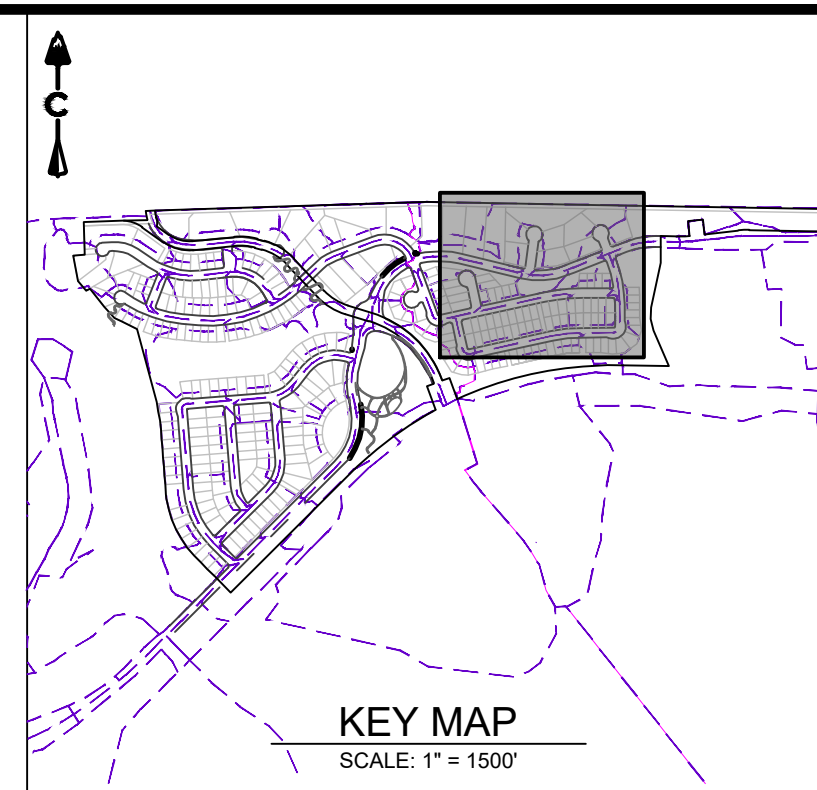
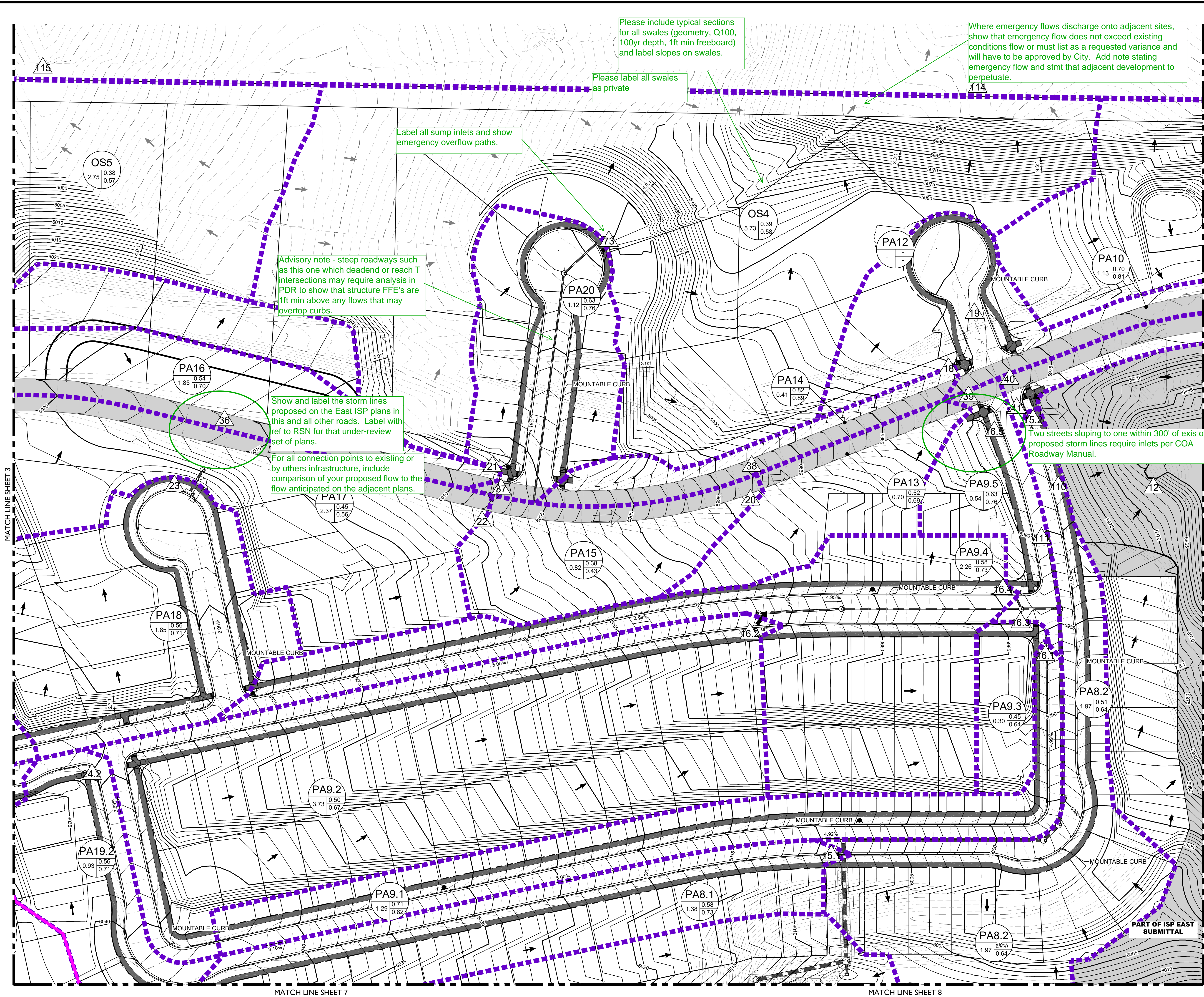
NOT FOR CONSTRUCTION

DESIGNED BY: JK  
DRAWN BY: DG  
CHECKED BY: MHN

JOB NO.  
19-032

SHEET  
3





LEGEND	
EXISTING	PROPOSED
BASIN DESIGNATION	
5 YEAR COEFFICIENTS	
100 YEAR COEFFICIENTS	
DESIGN POINT	
DIRECTIONAL FLOW ARROW	
EMERGENCY OVERFLOW ROUTE	
PROPOSED DRAINAGE BASIN	
EXISTING DRAINAGE BASIN	
PROPOSED MAJOR CONTOUR	
PROPOSED MINOR CONTOUR	
EXISTING MAJOR CONTOUR	
EXISTING MINOR CONTOUR	
EASEMENT	
RIGHT OF WAY (R.O.W.)	
CENTERLINE	
PROJECT BOUNDARY	
PROPOSED STORM & STUB OUT	
EXISTING STORM & STUB OUT	
STORM MANHOLES	
STORM INLETS	
FES, FOREBAY, & TRICKLE CHANNEL	
OUTLET STRUCTURE	
CRUSHER FINES	
MAINTENANCE ACCESS	
RIPRAP	
FLOODPLAIN	
WETLAND	
LIMITS OF CONSTRUCTION	
MAJOR DRAINAGE BASIN	
DRAINAGE SWALE	
PART OF ISP EAST SUBMITTAL	

- NOTES:**
- CITY OF AURORA PLAN REVIEW IS ONLY FOR GENERAL CONFORMANCE WITH THE CITY OF AURORA DESIGN CRITERIA AND THE CITY CODE. THE CITY IS NOT RESPONSIBLE FOR THE ACCURACY AND ADEQUACY OF THE DESIGN, OF DIMENSIONS AND ELEVATIONS WHICH SHALL BE CONFIRMED AND CORRELATED AT THE JOB SITE. THE CITY OF AURORA, THROUGH THE APPROVAL OF THIS DOCUMENT, ASSUMES NO RESPONSIBILITY FOR THE COMPLETENESS AND/OR ACCURACY OF THIS DOCUMENT.
  - STORM SEWER SYSTEM IN COMBINATION WITH THE STREETS WILL BE SIZED FOR THE 100 YEAR STORM EVENT.
  - PONDS SHOWN HEREIN ARE SCHEMATIC ONLY. ACTUAL SIZE, SHAPE, AND LOCATION WILL VARY AS SITE DESIGN PROGRESSES.
  - THIS MASTER DRAINAGE PLAN HAS BEEN PREPARED BASED UPON THE BEST AVAILABLE INFORMATION AT THIS TIME. CONCEPTS, DRAINAGE PATTERNS, AND OFFSITE FACILITIES SHALL BE CONFIRMED IN THE SUBSEQUENT PRELIMINARY AND FINAL DRAINAGE PLANS FOR THE PROPERTY.
  - ALL STORM INFRASTRUCTURE IS PRIVATE EXCEPT AS NOTED AND SIZED FOR THE 100 YEAR EVENT. ALL STORM INFRASTRUCTURE WILL BE MAINTAINED BY THE METRO DISTRICT EXCEPT AS NOTED.
  - THE STORM SEWER MAY NOT BE IN ITS FINAL LOCATION. ADDITIONAL STORM SEWER MAY BE REQUIRED AND WILL BE REFINED WITH THE PRELIMINARY DRAINAGE REPORT. DRAINAGE EASEMENTS WILL BE PROVIDED AS NEEDED.
  - THE BASIS OF THE KRAGELUND TRIBUTARY FLOOD HAZARD AREAS IS THE CHERRY CREEK TRIBUTARY MINOR TRIBUTARY FHAD PREPARED BY DEWBERRY, AND APPROVED IN 2021.
  - WORK IN THE FLOODPLAIN REQUIRES A FLOODPLAIN DEVELOPMENT PERMIT.
  - WORK IN FLOODWAY REQUIRES CLOMR OR NO RISE CERTIFICATION LETTER.

CORE CONSULTANTS, INC.  
34733 S. BROADWAY  
DENVER, CO 80113  
303.703.4444  
LIVEYOURCORE.COM

LAND DEVELOPMENT  
ENERGY  
PUBLIC INFRASTRUCTURE

**CORE**

Know what's below.  
Call before you dig.

811

#	REVISION DESCRIPTION	DATE	BY
1	DRAFT	XXXXXX	XX

**PRAIRIE POINT, FILING NO.2**  
AURORA, CO

**PRELIMINARY DRAINAGE REPORT**  
DETAILED DRAINAGE MAP (3 OF 8)

DESIGNED BY: JK  
DRAWN BY: DG  
CHECKED BY: MHN

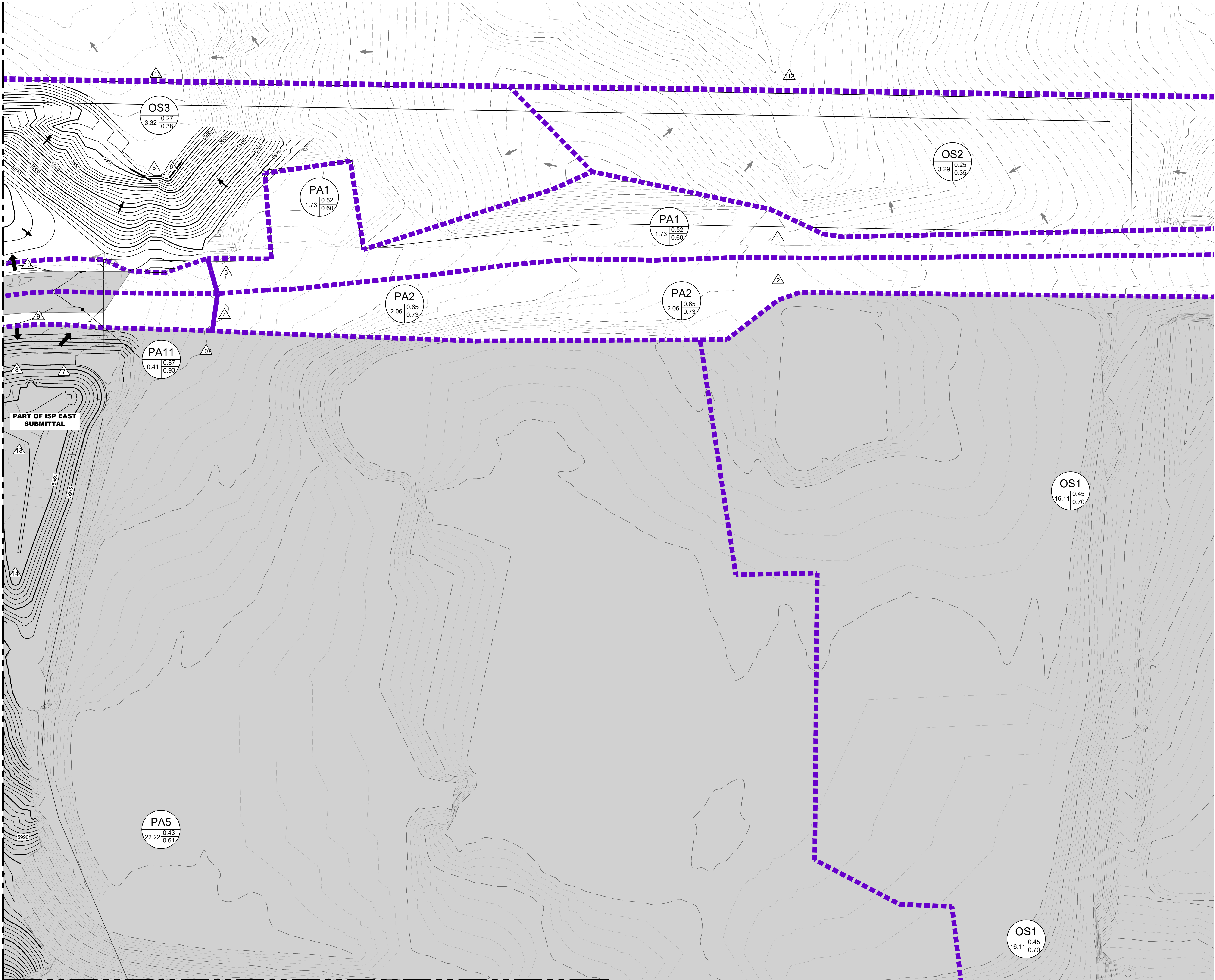
JOB NO.  
19-032

SHEET  
4

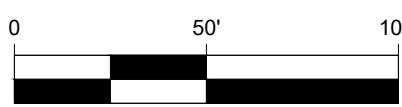
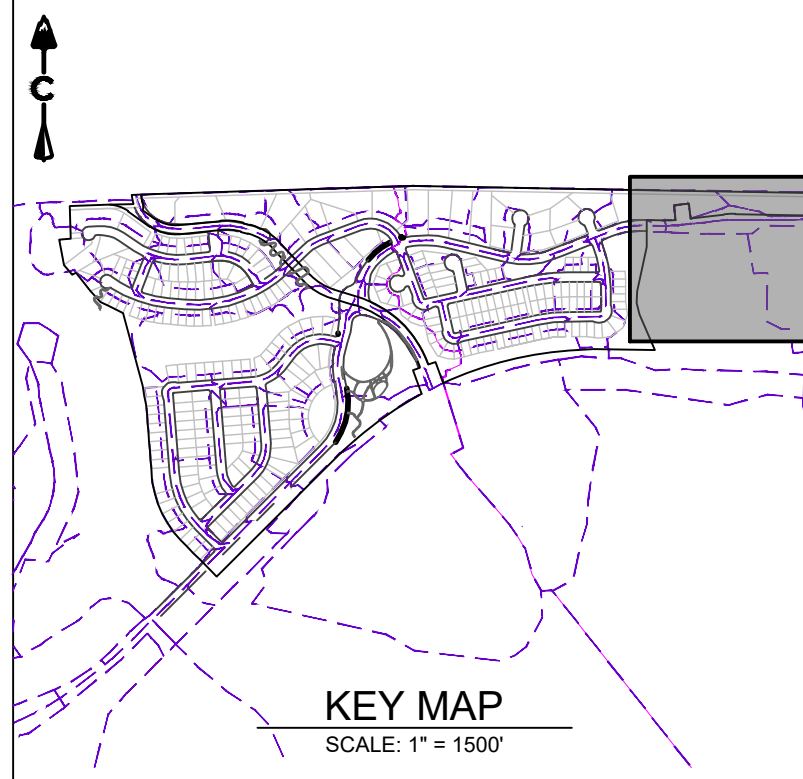
NOT FOR CONSTRUCTION



MATCH LINE SHEET 4



MATCH LINE SHEET 8



LEGEND

EXISTING	PROPOSED	
		BASIN DESIGNATION
		5 YEAR COEFFICIENTS
		100 YEAR COEFFICIENTS
		DESIGN POINT
		DIRECTIONAL FLOW ARROW
		EMERGENCY OVERFLOW ROUTE
		PROPOSED DRAINAGE BASIN
		EXISTING DRAINAGE BASIN
		PROPOSED MAJOR CONTOUR
		PROPOSED MINOR CONTOUR
		EXISTING MAJOR CONTOUR
		EXISTING MINOR CONTOUR
		EASEMENT
		RIGHT OF WAY (R.O.W.)
		CENTERLINE
		PROJECT BOUNDARY
		PROPOSED STORM & STUB OUT
		EXISTING STORM & STUB OUT
		STORM MANHOLES
		STORM INLETS
		OUTLET STRUCTURE
		FES, FOREBAY, & TRICKLE CHANNEL
		CRUSHER FINES
		MAINTENANCE ACCESS
		RIPRAP
		FLOODPLAIN
		WETLAND
		LIMITS OF CONSTRUCTION
		MAJOR DRAINAGE BASIN
		DRAINAGE SWALE
		PART OF ISP EAST SUBMITTAL

- NOTES:
- CITY OF AURORA PLAN REVIEW IS ONLY FOR GENERAL CONFORMANCE WITH THE CITY OF AURORA DESIGN CRITERIA AND THE CITY CODE. THE CITY IS NOT RESPONSIBLE FOR THE ACCURACY AND ADEQUACY OF THE DESIGN, OF DIMENSIONS AND ELEVATIONS WHICH SHALL BE CONFIRMED AND CORRELATED AT THE JOB SITE. THE CITY OF AURORA, THROUGH THE APPROVAL OF THIS DOCUMENT, ASSUMES NO RESPONSIBILITY FOR THE COMPLETENESS AND/OR ACCURACY OF THIS DOCUMENT.
  - STORM SEWER SYSTEM IN COMBINATION WITH THE STREETS WILL BE SIZED FOR THE 100 YEAR STORM EVENT.
  - PONDS SHOWN HEREIN ARE SCHEMATIC ONLY. ACTUAL SIZE, SHAPE, AND LOCATION WILL VARY AS SITE DESIGN PROGRESSES.
  - THIS MASTER DRAINAGE PLAN HAS BEEN PREPARED BASED UPON THE BEST AVAILABLE INFORMATION AT THIS TIME. CONCEPTS, DRAINAGE PATTERNS, AND OFFSITE FACILITIES SHALL BE CONFIRMED IN THE SUBSEQUENT PRELIMINARY AND FINAL DRAINAGE PLANS FOR THE PROPERTY.
  - ALL STORM INFRASTRUCTURE IS PRIVATE EXCEPT AS NOTED AND SIZED FOR THE 100 YEAR EVENT. ALL STORM INFRASTRUCTURE WILL BE MAINTAINED BY THE METRO DISTRICT EXCEPT AS NOTED.
  - THE STORM SEWER MAY NOT BE IN ITS FINAL LOCATION. ADDITIONAL STORM SEWER MAY BE REQUIRED AND WILL BE REFINED WITH THE PRELIMINARY DRAINAGE REPORT. DRAINAGE EASEMENTS WILL BE PROVIDED AS NEEDED.
  - THE BASIS OF THE KRAGELUND TRIBUTARY FLOOD HAZARD AREAS IS THE CHERRY CREEK TRIBUTARY MINOR TRIBUTARY FHAD PREPARED BY DEWBERRY, AND APPROVED IN 2021.
  - WORK IN THE FLOODPLAIN REQUIRES A FLOODPLAIN DEVELOPMENT PERMIT.
  - WORK IN FLOODWAY REQUIRES CLOMR OR NO RISE CERTIFICATION LETTER.

PRAIRIE POINT, FILING NO.2  
AURORA, CO  
PRELIMINARY DRAINAGE REPORT  
DETAILED DRAINAGE MAP (4 OF 8)

NOT FOR  
CONSTRUCTION

DESIGNED BY: JK  
DRAWN BY: DG  
CHECKED BY: MHN

JOB NO.  
19-032  
SHEET  
5

Know what's below.  
Call before you dig.  
**811**

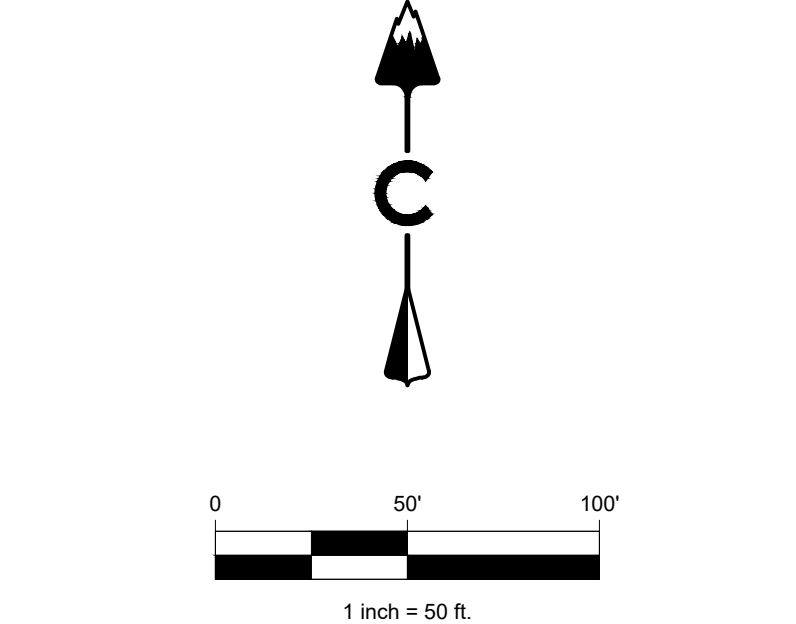
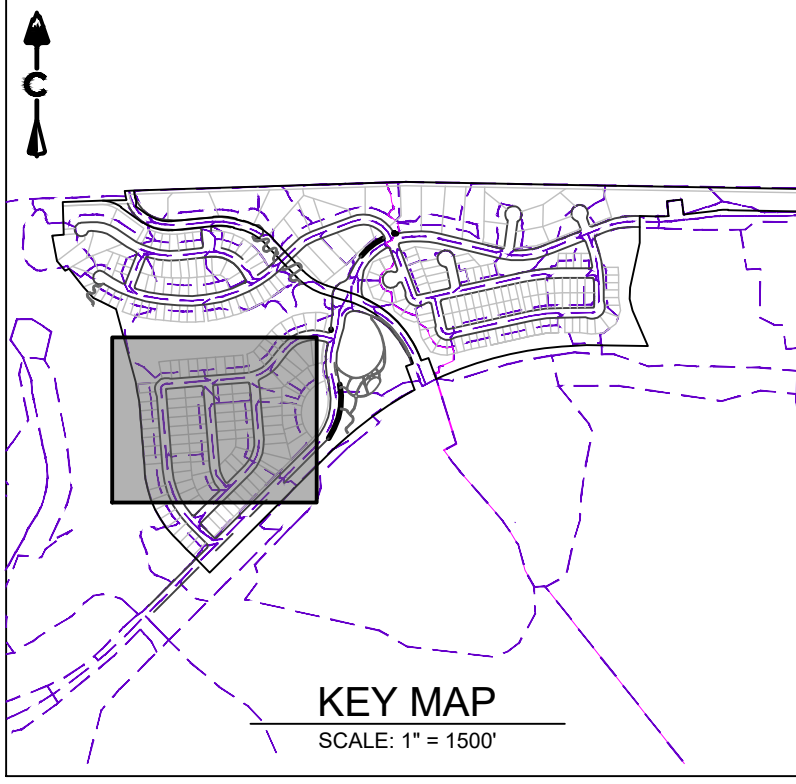
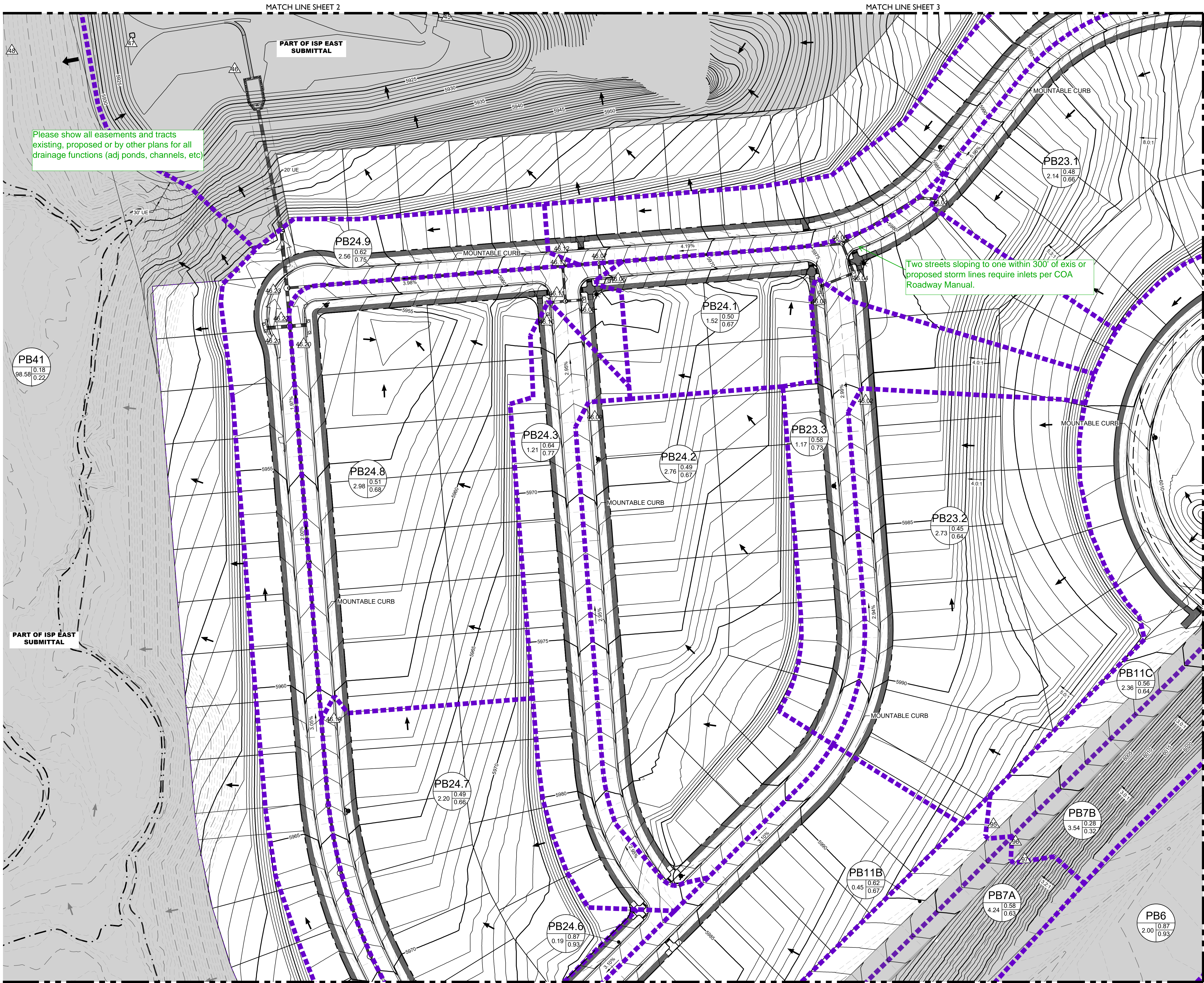
#	REVISION DESCRIPTION	DATE	BY
1	DRAFT	XXXXXX	XX

CORE CONSULTANTS, INC.  
3473 S. BROADWAY  
DENVER, CO 80113  
303.703.4444  
LIVEYOURCORE.COM

LAND DEVELOPMENT  
ENERGY  
PUBLIC INFRASTRUCTURE

CORE





LEGEND	
EXISTING	PROPOSED
BASIN DESIGNATION	
5 YEAR COEFFICIENTS	
100 YEAR COEFFICIENTS	
DESIGN POINT	
DIRECTIONAL FLOW ARROW	
EMERGENCY OVERFLOW ROUTE	
PROPOSED DRAINAGE BASIN	
EXISTING DRAINAGE BASIN	
PROPOSED MAJOR CONTOUR	
PROPOSED MINOR CONTOUR	
EXISTING MAJOR CONTOUR	
EXISTING MINOR CONTOUR	
EASEMENT	
RIGHT OF WAY (R.O.W.)	
CENTERLINE	
PROJECT BOUNDARY	
PROPOSED STORM & STUB OUT	
EXISTING STORM & STUB OUT	
STORM MANHOLES	
STORM INLETS	
FES, FOREBAY, & TRICKLE CHANNEL	
OUTLET STRUCTURE	
CRUSHER FINES	
MAINTENANCE ACCESS	
RIPRAP	
FLOODPLAIN	
WETLAND	
LIMITS OF CONSTRUCTION	
MAJOR DRAINAGE BASIN	
DRAINAGE SWALE	
PART OF ISP EAST SUBMITTAL	

- NOTES:**
- CITY OF AURORA PLAN REVIEW IS ONLY FOR GENERAL CONFORMANCE WITH THE CITY OF AURORA DESIGN CRITERIA AND THE CITY CODE. THE CITY IS NOT RESPONSIBLE FOR THE ACCURACY AND ADEQUACY OF THE DESIGN, OF DIMENSIONS AND ELEVATIONS WHICH SHALL BE CONFIRMED AND CORRELATED AT THE JOB SITE. THE CITY OF AURORA, THROUGH THE APPROVAL OF THIS DOCUMENT, ASSUMES NO RESPONSIBILITY FOR THE COMPLETENESS AND/OR ACCURACY OF THIS DOCUMENT.
  - STORM SEWER SYSTEM IN COMBINATION WITH THE STREETS WILL BE SIZED FOR THE 100 YEAR STORM EVENT.
  - PONDS SHOWN HEREIN ARE SCHEMATIC ONLY. ACTUAL SIZE, SHAPE, AND LOCATION WILL VARY AS SITE DESIGN PROGRESSES.
  - THIS MASTER DRAINAGE PLAN HAS BEEN PREPARED BASED UPON THE BEST AVAILABLE INFORMATION AT THIS TIME. CONCEPTS, DRAINAGE PATTERNS, AND OFFSITE FACILITIES SHALL BE CONFIRMED IN THE SUBSEQUENT PRELIMINARY AND FINAL DRAINAGE PLANS FOR THE PROPERTY.
  - ALL STORM INFRASTRUCTURE IS PRIVATE EXCEPT AS NOTED AND SIZED FOR THE 100 YEAR EVENT. ALL STORM INFRASTRUCTURE WILL BE MAINTAINED BY THE METRO DISTRICT EXCEPT AS NOTED.
  - THE STORM SEWER MAY NOT BE IN ITS FINAL LOCATION. ADDITIONAL STORM SEWER MAY BE REQUIRED AND WILL BE REFINED WITH THE PRELIMINARY DRAINAGE REPORT. DRAINAGE EASEMENTS WILL BE PROVIDED AS NEEDED.
  - THE BASIS OF THE KRAGELUND TRIBUTARY FLOOD HAZARD AREAS IS THE CHERRY CREEK TRIBUTARY MINOR TRIBUTARY FHAD PREPARED BY DEWBERRY, AND APPROVED IN 2021.
  - WORK IN THE FLOODPLAIN REQUIRES A FLOODPLAIN DEVELOPMENT PERMIT.
  - WORK IN FLOODWAY REQUIRES CLOMR OR NO RISE CERTIFICATION LETTER.

CORE CONSULTANTS, INC.  
3473 S. BROADWAY  
AURORA, CO 80013  
303.703.4444  
LIVEYOURCORE.COM

**CORE**

Know what's below.  
Call before you dig.  
**811**

DATE	BY	REVISION DESCRIPTION
XXXXXX XX		
1	DRAFT	

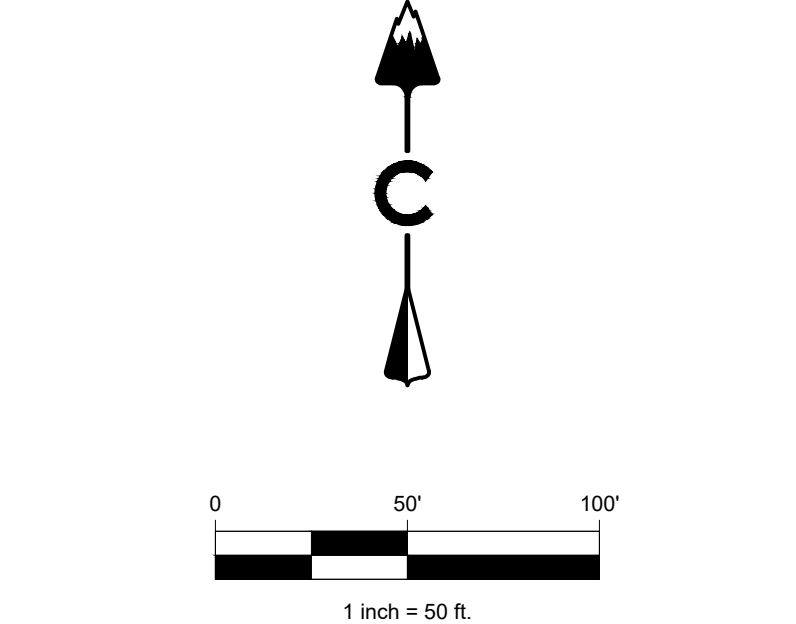
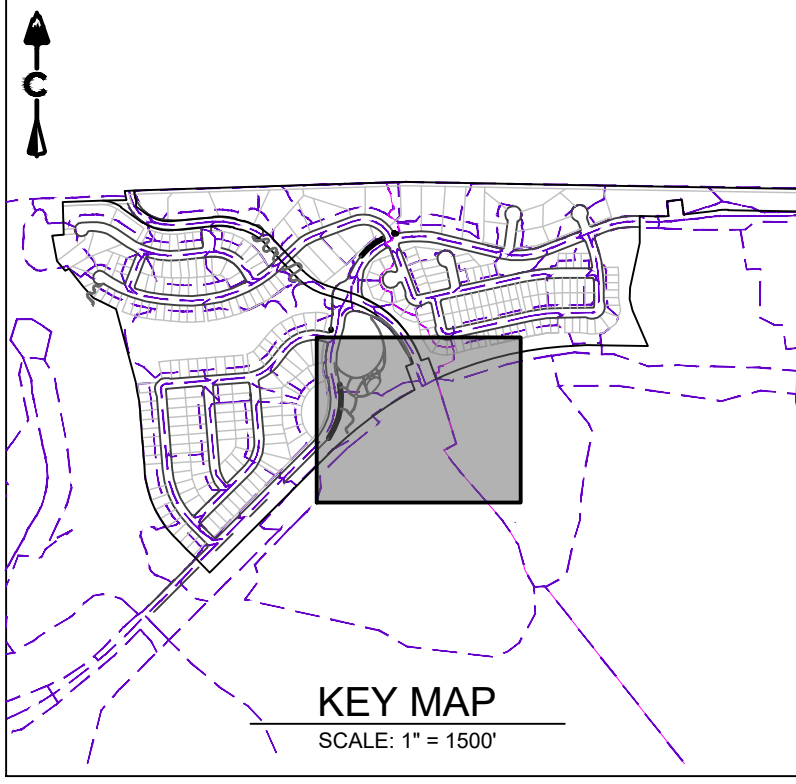
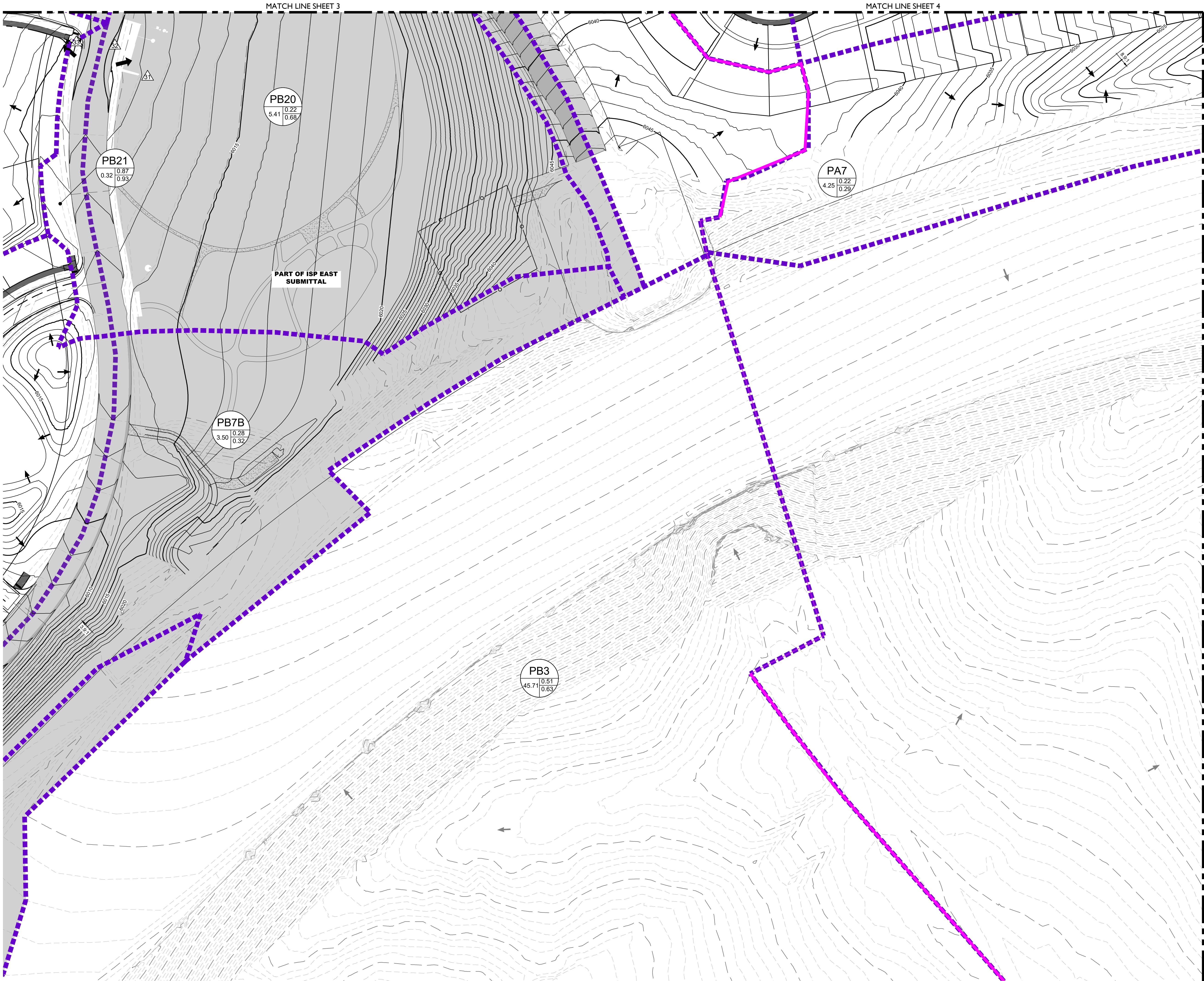
**PRAIRIE POINT, FILING NO.2**  
AURORA, CO

PRELIMINARY DRAINAGE REPORT  
DETAILED DRAINAGE MAP (5 OF 8)

NOT FOR CONSTRUCTION

DESIGNED BY: JK
DRAWN BY: DG
CHECKED BY: MHN
JOB NO. 19-032
SHEET 6





**LEGEND**

EXISTING	PROPOSED	
		BASIN DESIGNATION
		5 YEAR COEFFICIENTS
		100 YEAR COEFFICIENTS
		DESIGN POINT
		DIRECTIONAL FLOW ARROW
		EMERGENCY OVERFLOW ROUTE
		PROPOSED DRAINAGE BASIN
		EXISTING DRAINAGE BASIN
		PROPOSED MAJOR CONTOUR
		PROPOSED MINOR CONTOUR
		EXISTING MAJOR CONTOUR
		EXISTING MINOR CONTOUR
		EASEMENT
		RIGHT OF WAY (R.O.W.)
		CENTERLINE
		PROJECT BOUNDARY
		PROPOSED STORM & STUB OUT
		EXISTING STORM & STUB OUT
		STORM MANHOLES
		STORM INLETS
		FES, FOREBAY, & TRICKLE CHANNEL
		OUTLET STRUCTURE
		CRUSHER FINES
		MAINTENANCE ACCESS
		RIPRAP
		FLOODPLAIN
		WETLAND
		LIMITS OF CONSTRUCTION
		MAJOR DRAINAGE BASIN
		DRAINAGE SWALE
		PART OF ISP EAST SUBMITTAL

- NOTES:**
- CITY OF AURORA PLAN REVIEW IS ONLY FOR GENERAL CONFORMANCE WITH THE CITY OF AURORA DESIGN CRITERIA AND THE CITY CODE. THE CITY IS NOT RESPONSIBLE FOR THE ACCURACY AND ADEQUACY OF THE DESIGN, OF DIMENSIONS AND ELEVATIONS WHICH SHALL BE CONFIRMED AND CORRELATED AT THE JOB SITE. THE CITY OF AURORA, THROUGH THE APPROVAL OF THIS DOCUMENT, ASSUMES NO RESPONSIBILITY FOR THE COMPLETENESS AND/OR ACCURACY OF THIS DOCUMENT.
  - STORM SEWER SYSTEM IN COMBINATION WITH THE STREETS WILL BE SIZED FOR THE 100 YEAR STORM EVENT.
  - PONDS SHOWN HEREIN ARE SCHEMATIC ONLY. ACTUAL SIZE, SHAPE, AND LOCATION WILL VARY AS SITE DESIGN PROGRESSES.
  - THIS MASTER DRAINAGE PLAN HAS BEEN PREPARED BASED UPON THE BEST AVAILABLE INFORMATION AT THIS TIME. CONCEPTS, DRAINAGE PATTERNS, AND OFFSITE FACILITIES SHALL BE CONFIRMED IN THE SUBSEQUENT PRELIMINARY AND FINAL DRAINAGE PLANS FOR THE PROPERTY.
  - ALL STORM INFRASTRUCTURE IS PRIVATE EXCEPT AS NOTED AND SIZED FOR THE 100 YEAR EVENT. ALL STORM INFRASTRUCTURE WILL BE MAINTAINED BY THE METRO DISTRICT EXCEPT AS NOTED.
  - THE STORM SEWER MAY NOT BE IN ITS FINAL LOCATION. ADDITIONAL STORM SEWER MAY BE REQUIRED AND WILL BE REFINED WITH THE PRELIMINARY DRAINAGE REPORT. DRAINAGE EASEMENTS WILL BE PROVIDED AS NEEDED.
  - THE BASIS OF THE KRAGELUND TRIBUTARY FLOOD HAZARD AREAS IS THE CHERRY CREEK TRIBUTARY MINOR TRIBUTARY FHAD PREPARED BY DEWBERRY, AND APPROVED IN 2021.
  - WORK IN THE FLOODPLAIN REQUIRES A FLOODPLAIN DEVELOPMENT PERMIT.
  - WORK IN FLOODWAY REQUIRES CLOMR OR NO RISE CERTIFICATION LETTER.

**Know what's below.**  
Call before you dig.

**811**

#	REVISION DESCRIPTION	DATE	BY
1	DRAFT	XXXXXX	XX

**PRAIRIE POINT, FILING NO.2**  
AURORA, CO

**PRELIMINARY DRAINAGE REPORT**  
DETAILED DRAINAGE MAP (6 OF 8)

**NOT FOR CONSTRUCTION**

DESIGNED BY: JK  
DRAWN BY: DG  
CHECKED BY: MHN

JOB NO.  
19-032

SHEET  
7

**CORE**

CORE CONSULTANTS, INC.  
3473 S. BROADWAY  
AURORA, CO 80113  
303.703.4444  
LIVEYOURCORE.COM

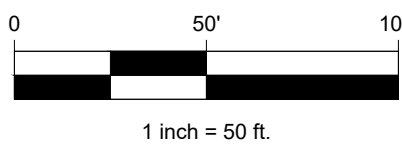
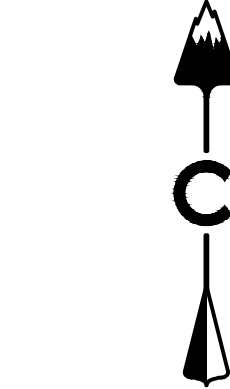
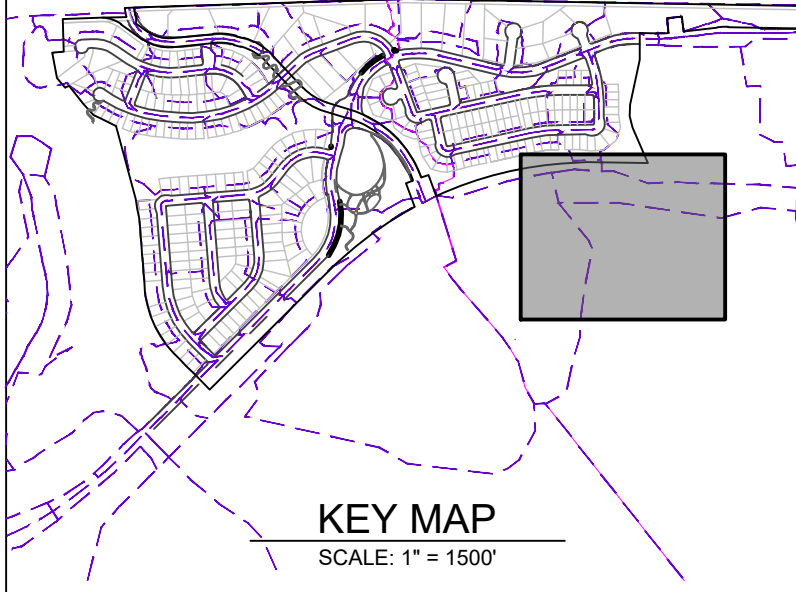
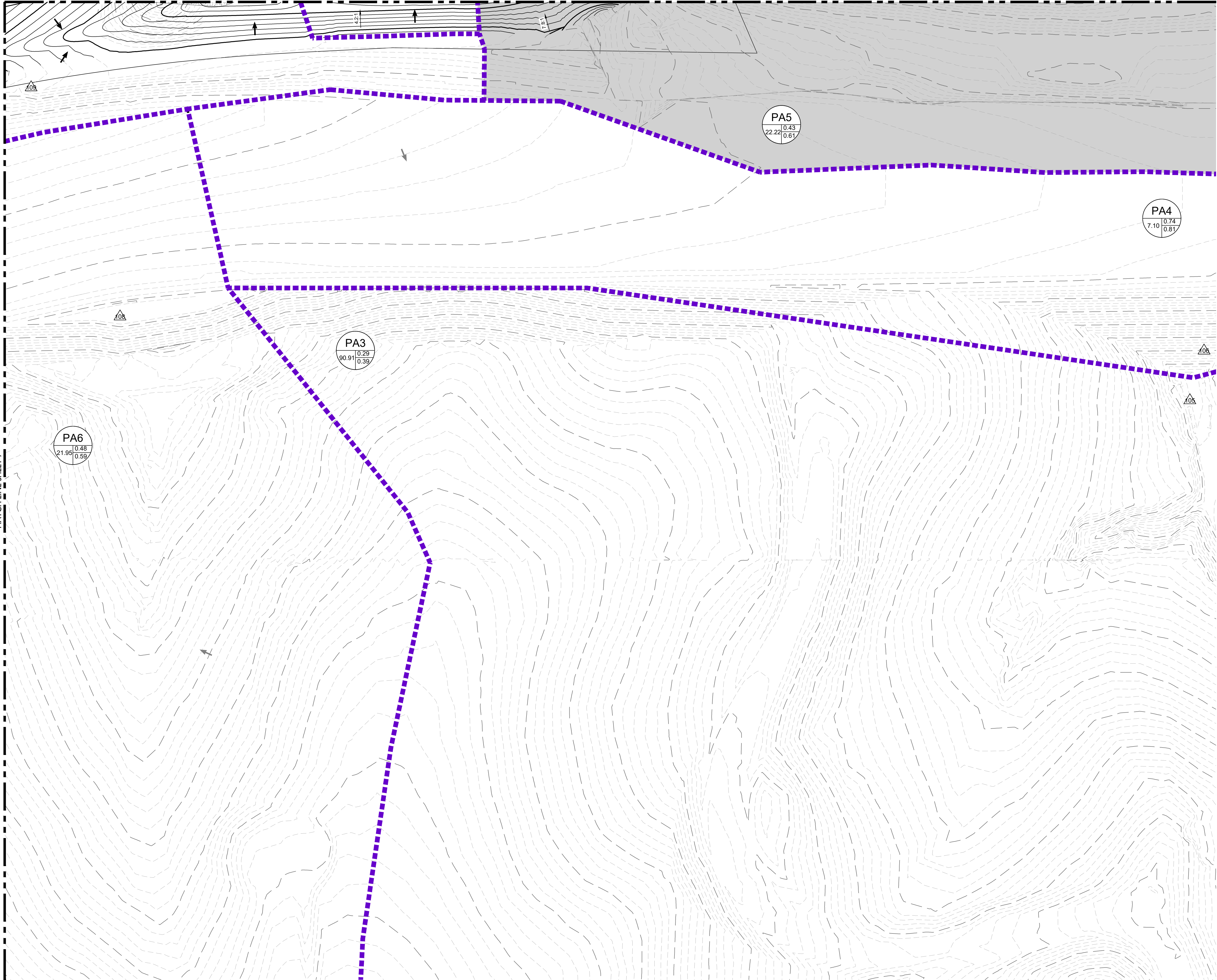
LAND DEVELOPMENT  
ENERGY  
PUBLIC INFRASTRUCTURE



MATCH LINE SHEET 7

MATCH LINE SHEET 4

MATCH LINE SHEET 5



#### LEGEND

EXISTING	PROPOSED	
		BASIN DESIGNATION
		5 YEAR COEFFICIENTS
		100 YEAR COEFFICIENTS
		DESIGN POINT
		DIRECTIONAL FLOW ARROW
		EMERGENCY OVERFLOW ROUTE
		PROPOSED DRAINAGE BASIN
		EXISTING DRAINAGE BASIN
		PROPOSED MAJOR CONTOUR
		PROPOSED MINOR CONTOUR
		EXISTING MAJOR CONTOUR
		EXISTING MINOR CONTOUR
		EASEMENT
		RIGHT OF WAY (R.O.W.)
		CENTERLINE
		PROJECT BOUNDARY
		PROPOSED STORM & STUB OUT
		EXISTING STORM & STUB OUT
		STORM MANHOLES
		STORM INLETS
		OUTLET STRUCTURE
		FES, FOREBAY, & TRICKLE CHANNEL
		CRUSHER FINES
		MAINTENANCE ACCESS
		RIPRAP
		FLOODPLAIN
		WETLAND
		LIMITS OF CONSTRUCTION
		MAJOR DRAINAGE BASIN
		DRAINAGE SWALE
		PART OF ISP EAST SUBMITTAL

#### NOTES:

- CITY OF AURORA PLAN REVIEW IS ONLY FOR GENERAL CONFORMANCE WITH THE CITY OF AURORA DESIGN CRITERIA AND THE CITY CODE. THE CITY IS NOT RESPONSIBLE FOR THE ACCURACY AND ADEQUACY OF THE DESIGN, OF DIMENSIONS AND ELEVATIONS WHICH SHALL BE CONFIRMED AND CORRELATED AT THE JOB SITE. THE CITY OF AURORA, THROUGH THE APPROVAL OF THIS DOCUMENT, ASSUMES NO RESPONSIBILITY FOR THE COMPLETENESS AND/OR ACCURACY OF THIS DOCUMENT.
- STORM SEWER SYSTEM IN COMBINATION WITH THE STREETS WILL BE SIZED FOR THE 100 YEAR STORM EVENT.
- PONDS SHOWN HEREIN ARE SCHEMATIC ONLY. ACTUAL SIZE, SHAPE, AND LOCATION WILL VARY AS SITE DESIGN PROGRESSES.
- THIS MASTER DRAINAGE PLAN HAS BEEN PREPARED BASED UPON THE BEST AVAILABLE INFORMATION AT THIS TIME. CONCEPTS, DRAINAGE PATTERNS, AND OFFSITE FACILITIES SHALL BE CONFIRMED IN THE SUBSEQUENT PRELIMINARY AND FINAL DRAINAGE PLANS FOR THE PROPERTY.
- ALL STORM INFRASTRUCTURE IS PRIVATE EXCEPT AS NOTED AND SIZED FOR THE 100 YEAR EVENT. ALL STORM INFRASTRUCTURE WILL BE MAINTAINED BY THE METRO DISTRICT EXCEPT AS NOTED. THE STORM SEWER MAY NOT BE IN ITS FINAL LOCATION. ADDITIONAL STORM SEWER MAY BE REQUIRED AND WILL BE REFINED WITH THE PRELIMINARY DRAINAGE REPORT. DRAINAGE EASEMENTS WILL BE PROVIDED AS NEEDED.
- THE BASIS OF THE KRAGELUND TRIBUTARY FLOOD HAZARD AREAS IS THE CHERRY CREEK TRIBUTARY MINOR TRIBUTARY FHAD PREPARED BY DEWBERRY, AND APPROVED IN 2021.
- WORK IN THE FLOODPLAIN REQUIRES A FLOODPLAIN DEVELOPMENT PERMIT.
- WORK IN FLOODWAY REQUIRES CLOMR OR NO RISE CERTIFICATION LETTER.

PRAIRIE POINT, FILING NO.2

AURORA, CO

PRELIMINARY DRAINAGE REPORT

DETAILED DRAINAGE MAP (7 OF 8)

NOT FOR  
CONSTRUCTION

DESIGNED BY: JK  
DRAWN BY: DG  
CHECKED BY: MHN

JOB NO.  
19-032

SHEET  
8

Know what's below.  
Call before you dig.



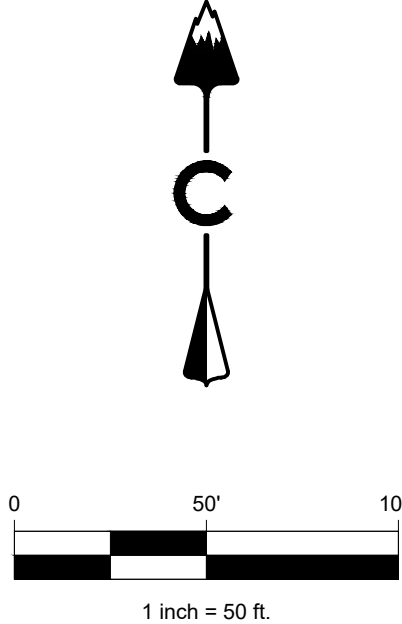
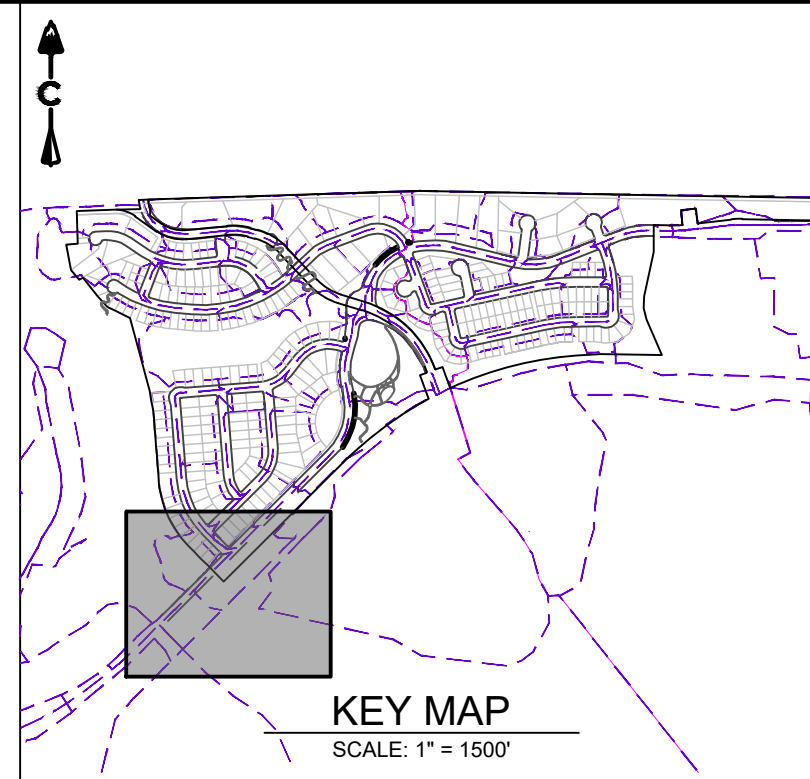
#	REVISION DESCRIPTION	DATE	BY
1	DRAFT	XXXXXX	XX

CORE CONSULTANTS, INC.  
3473 S. BROADWAY  
AURORA, CO 80113  
303.703.4444  
LIVEYOURCORE.COM

LAND DEVELOPMENT  
ENERGY  
PUBLIC INFRASTRUCTURE

CORE





EXISTING	PROPOSED	
		BASIN DESIGNATION
		5 YEAR COEFFICIENTS
		100 YEAR COEFFICIENTS
		DESIGN POINT
		DIRECTIONAL FLOW ARROW
		EMERGENCY OVERFLOW ROUTE
		PROPOSED DRAINAGE BASIN
		EXISTING DRAINAGE BASIN
		PROPOSED MAJOR CONTOUR
		PROPOSED MINOR CONTOUR
		EXISTING MAJOR CONTOUR
		EXISTING MINOR CONTOUR
		EASEMENT
		RIGHT OF WAY (R.O.W.)
		CENTERLINE
		PROJECT BOUNDARY
		PROPOSED STORM & STUB OUT
		EXISTING STORM & STUB OUT
		STORM MANHOLES
		STORM INLETS
		FES, FOREBAY, & TRICKLE CHANNEL
		OUTLET STRUCTURE
		CRUSHER FINES
		MANDATORY ACCESS
		RIPRAP
		FLOODPLAIN
		WETLAND
		LIMITS OF CONSTRUCTION
		MAJOR DRAINAGE BASIN
		DRAINAGE SWALE
		PART OF ISP EAST SUBMITTAL

NOTES:

1. CITY OF AURORA PLAN REVIEW IS ONLY FOR GENERAL CONFORMANCE WITH THE CITY OF AURORA DESIGN CRITERIA AND THE CITY CODE. THE CITY IS NOT RESPONSIBLE FOR THE ACCURACY AND ADEQUACY OF THE DESIGN, OF DIMENSIONS AND ELEVATIONS WHICH SHALL BE CONFIRMED AND CORRELATED AT THE JOB SITE. THE CITY OF AURORA, THROUGH THE APPROVAL OF THE PLANNING AND DESIGN DEPARTMENT, DOES NOT GUARANTEE THE COMPLETENESS AND/OR ACCURACY OF THIS DOCUMENT.
2. STORM SEWER SYSTEM IN COMBINATION WITH THE STREETS WILL BE SIZED FOR THE 100 YEAR STORM EVENT.
3. PORTION HEREIN ARE SCHEMATIC ONLY. ACTUAL, SIZE, SHAPE, AND LOCATION WILL VARY AS SITE DESIGN PROGRESSES. THIS MASTER DRAINAGE PLAN HAS BEEN PREPARED BASED UPON INFORMATION AVAILABLE AT THE TIME OF PREPARATION. THE DRAINAGE PATTERNS, AND OFFSITE FACILITIES SHALL BE CONFIRMED IN THE SUBSEQUENT PRELIMINARY AND FINAL DRAINAGE PLANS FOR THE PROJECT.
4. ALL STORM INFRASTRUCTURE IS PRIVATE EXCEPT AS NOTED AND SIZED FOR THE 100 YEAR EVENT. ALL STORM INFRASTRUCTURE WILL BE MAINTAINED BY THE METRO DISTRICT EXCEPT AS NOTED.
5. THE STORM SEWER MAY BE REQUIRED TO BE SIZED FOR AN ADDITIONAL STORM SEVER MAY BE REQUIRED AND WILL BE REFINED WITH THE PRELIMINARY DRAINAGE REPORT. DRAINAGE EASEMENTS WILL BE REQUIRED FOR THE PROJECT.
6. THE BASIS OF THE KAGELUND TRIBUTARY FLOOD HAZARD AREAS IS THE CHERRY CREEK TRIBUTARY MINOR TRIBUTARY FLOOD PROTECTION DEVELOPMENT PERMIT.
7. WORK IN THE FLOODPLAIN REQUIRES A FLOODPLAIN DEVELOPMENT PERMIT.
8. WORK IN FLOODWAY REQUIRES A FLOODWAY DESIGN LETTER.

...now what's below.

#	REVISION DESCRIPTION	DATE	BY
1	DRAFT	XXXXXXX	XXX

PRAIRIE POINT, FILING NO.2

AURORA, CO

# PRELIMINARY DRAINAGE REPORT DETAILED DRAINAGE MAP (8 OF 8)

NOT FOR  
CONSTRUCTION

DESIGNED BY: JK  
DRAWN BY: DG  
CHECKED BY: MHN

JOB NO.  
19-032

SHEET  
9