



# CIVITAS

**Crestone Peak Resources Operating, LLC**

## **SITE SAFETY AND EMERGENCY ACTION PLAN**

District Office  
650 Southgate Drive  
Windsor, CO, 80550

**Aspen 3-65 15-14 South Pad**

ADAMS COUNTY, COLORADO

## **Table of Contents**

### **Section 1 - Signature Page Section**

### **2 - Site specific information**

- a.** Site Safety Requirements
- b.** Emergency muster/assembly point(s)
- c.** 911 Address and GPS coordinates
- d.** Site description
- e.** Nearby schools and other High Occupancy Buildings
- f.** Directions to project locations and Map.
- g.** Location of SOS sheets
- h.** Location of sign-in sheets, JSA, safety forms

### **Section 3 - Maps & Documents**

- a)** Site Map
  - i. 250', 500', 1,000' Buffer zones and location of nearest Building Unit(s)
  - ii. Access Map and Muster point(s)
  - iii. 2500' Buffer zone

### **Section 4 - List of Emergency Contacts**

- a)** Crestone Peak Resources contact information.
- a)** Crestone Peak Resources community/media relations contact information
- b)** First responder contact information
- c)** Regulatory contact information
- d)** Nearest hospital
- e)** Spill response organization contact information.

### **Section 5 - Spill Response and Reporting**

- a)** Spill Response
- b)** Spill Reporting

### **Section 6 - Reportable storage quantity's**

- a)** Reportable quantities
- b)** Tier II Reporting

### **Section 7 - Evacuation Information**

- a)** Evacuation plan procedures (public)

### **Section 8 - Coordination with First Responder Agencies**

**SECTION 1**  
**SIGNATURE PAGE**

<b>Crestone Peak Resources</b>			
<b>Name</b>	<b>Signature</b>	<b>Title</b>	<b>Date</b>
Lisa David	<i>Lisa David</i>	Emergency Management Director	5/20/24
<b>Fire District</b>			
<b>Name</b>	<b>Signature</b>	<b>Title</b>	<b>Date</b>

## **SECTION2**

### **SITE SPECIFIC INFORMATION**

**a) Site Safety Requirements and General Information**

The minimum personal protective equipment (PPE) to enter any Crestone Peak Resources production location includes hard hat, safety glasses, safety toe boots, fire resistant clothing (FRC), and a 4-gas monitor. All contractors and visitors are responsible for providing their employees with the appropriate training on and use of PPE while on Crestone Peak Resources locations. In addition, all contract personnel entering a Crestone Peak Resources location to perform work must understand and abide by Crestone Peak Resources' contractor expectations relating to environmental, health, and safety requirements.

The primary hazards that any person must be aware of while on a Crestone Peak Resources production location include, but are not limited to, the potential for release of hydrocarbon gases and/or liquids from production equipment/tanks, heavy truck and equipment traffic, loud noise, high pressures, and the potential for a flash fire. These hazards can vary depending on the work being performed.

**b) Emergency Muster/Assembly point(s)**

**Aspen 3-65 15-14 South Pad**

Muster point is at the entrance to location. Muster locations will be identified during all safety briefings.

**c) 911 Address and GPS coordinates**

**API#** - Pending

**Legal Description** – W ½ SW ¼, Section 15, T3S, R65W, 6th P.M.

**Address** – Pending

**Lat/Long:** Lat: 39°47'19.54"N      Long: 104°39'33.48"W      Elevation: 5504.4ft

**d) Site description**

The **Aspen 3-65 15-14 South Pad** is a Crestone Peak Resources oil and gas production facility that will have 8 horizontal oil and gas wells along with (4) 500-barrel crude oil storage tanks and (2) 500 barrel produced water tanks located inside a lined secondary containment structure.

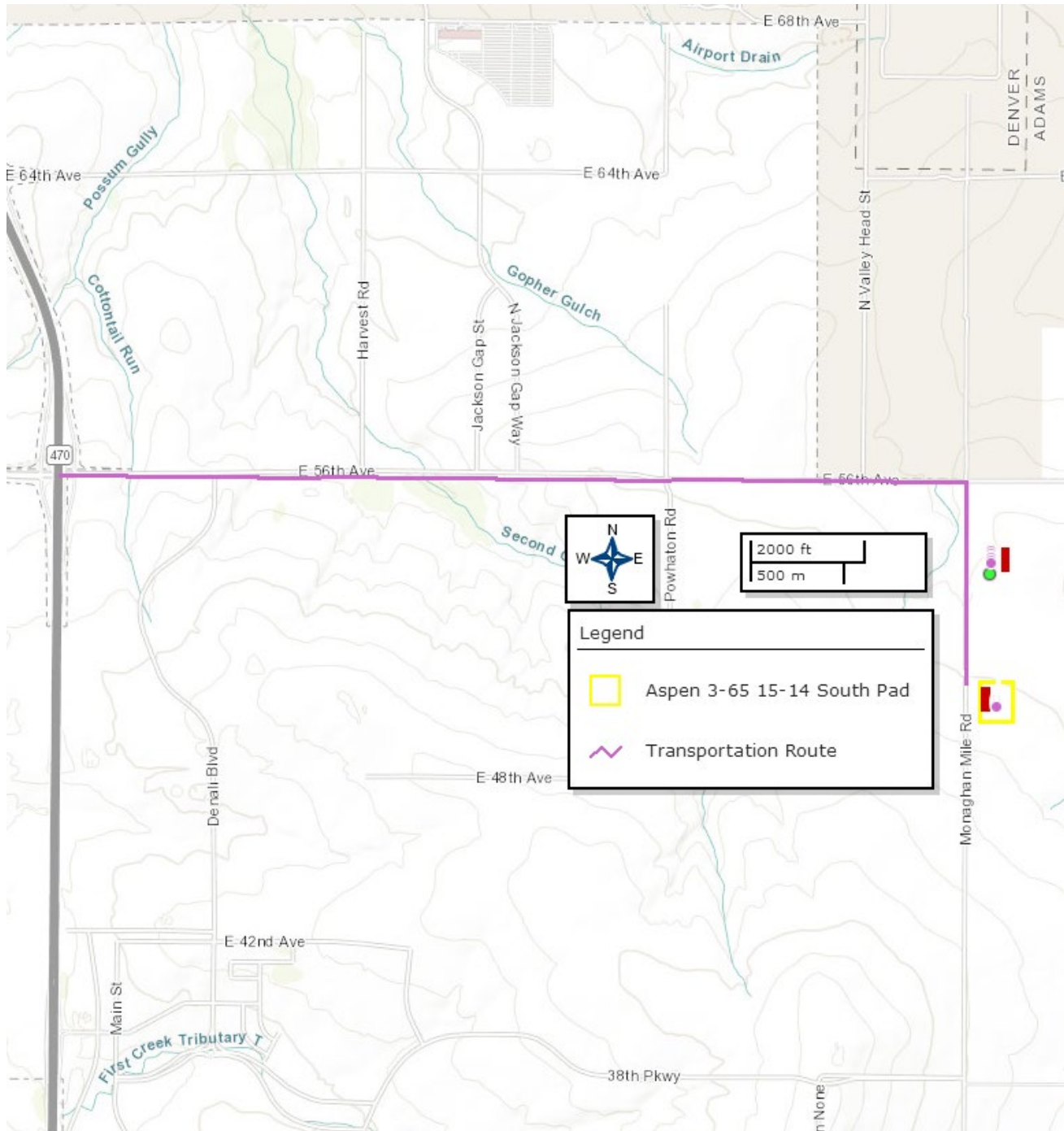
e) **Nearby schools and other High Occupancy Buildings**

No Schools near this location

No Residence are near this location

f) **Directions to Project Locations**

**Aspen 3-65 15-14 South Pad** - Access to the well site will be off E 56<sup>th</sup> Ave and Monaghan Rd. Proceed South approximately .6 miles, then East onto access road.



**g) Location of SDS sheets**

Depending on the operations taking place on location, the chemicals that may be present will vary. Regardless, hazard communication is a critical safety measure and Safety Data Sheets (SDS's) will be available from the Company Representative present or the contractor performing work on location. All SDS sheets are available through the following link, but can only be accessed by Civitas employees- <https://chemmanagement.ehs.com/9/52B6C4F1-9454-4F70-86F1-15370D01243A>

**h) Sign-In Sheets, JSAs, and Safety Forms**

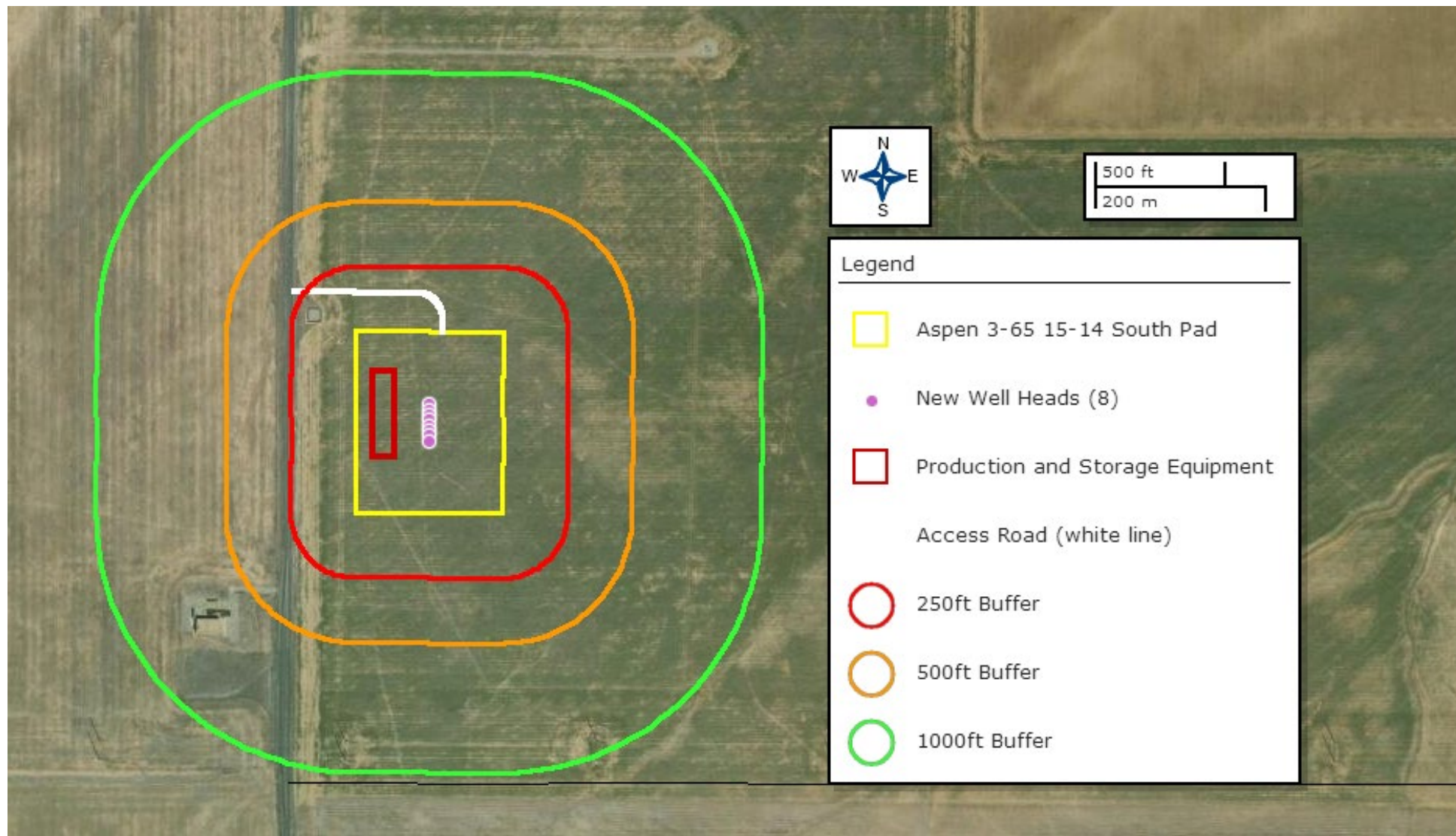
During drilling and completion activities all employees and approved visitors to the **Aspen 3-65 15-14 South Pad** will be required to enter through a manned security checkpoint at the location entrance where they will be required to sign in and will be provided with a detailed safety briefing of current operations and all safety precautions that must be adhered to while on location. In addition, all who enter the location must also sign out upon their departure. Security personnel are required to account for all persons entering or leaving location during active operations and in the event of an incident.

Once drilling and completion activities are finalized, the site will transition to its production phase and no unauthorized personnel will be allowed on location without first contacting a company representative. At this point, the primary chemicals stored on site will be crude oil and produced water.

Job Safety Analysis (JSA'S) are written every day, per task, or per shift if work crews are working 24/7 and can be found on location. This is performed by each contractor and kept in their files for review.

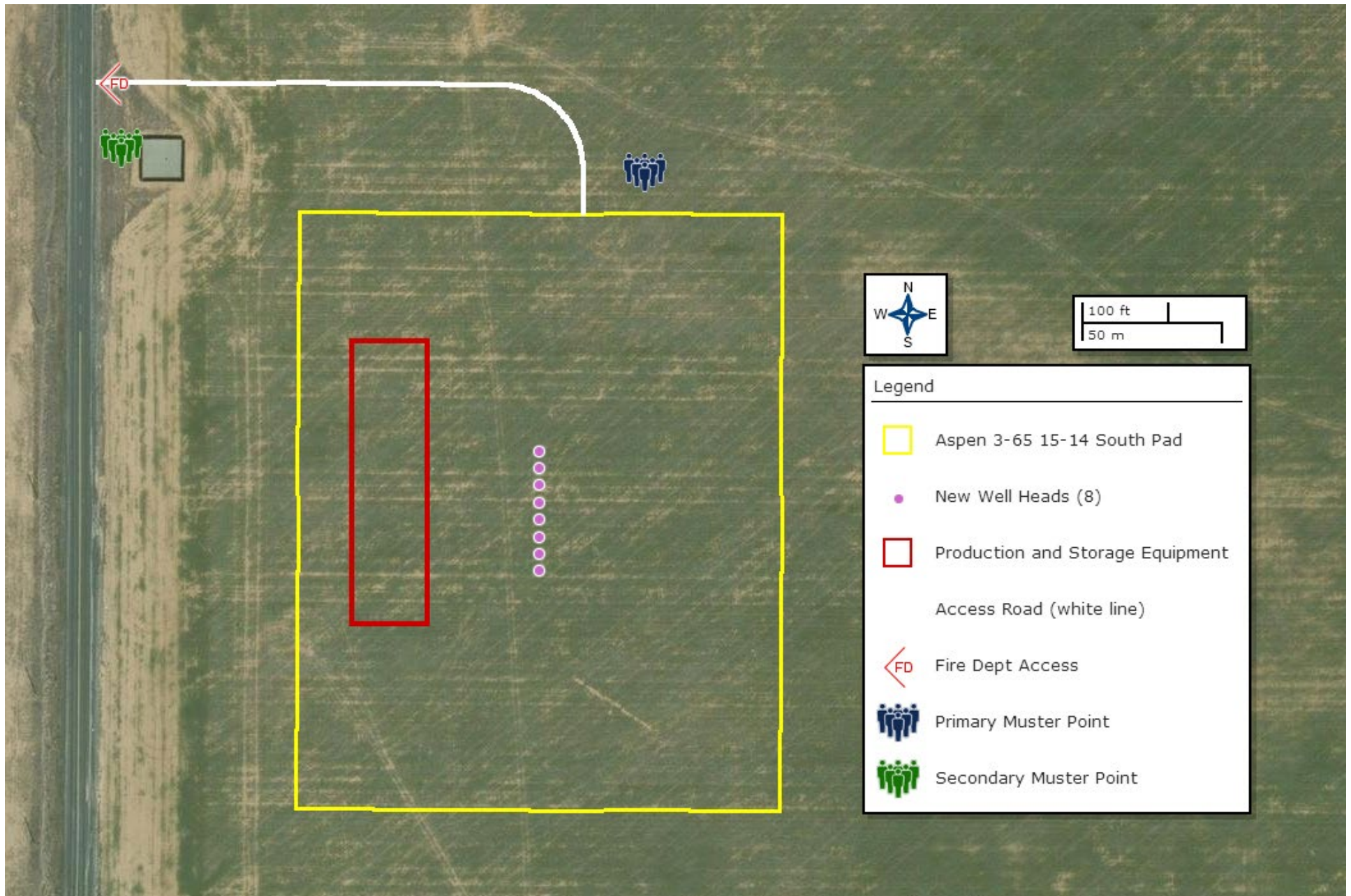
### Section 3- Maps

Aspen 3-65 15-14 South  
250ft, 500ft, 1000ft, Buffer



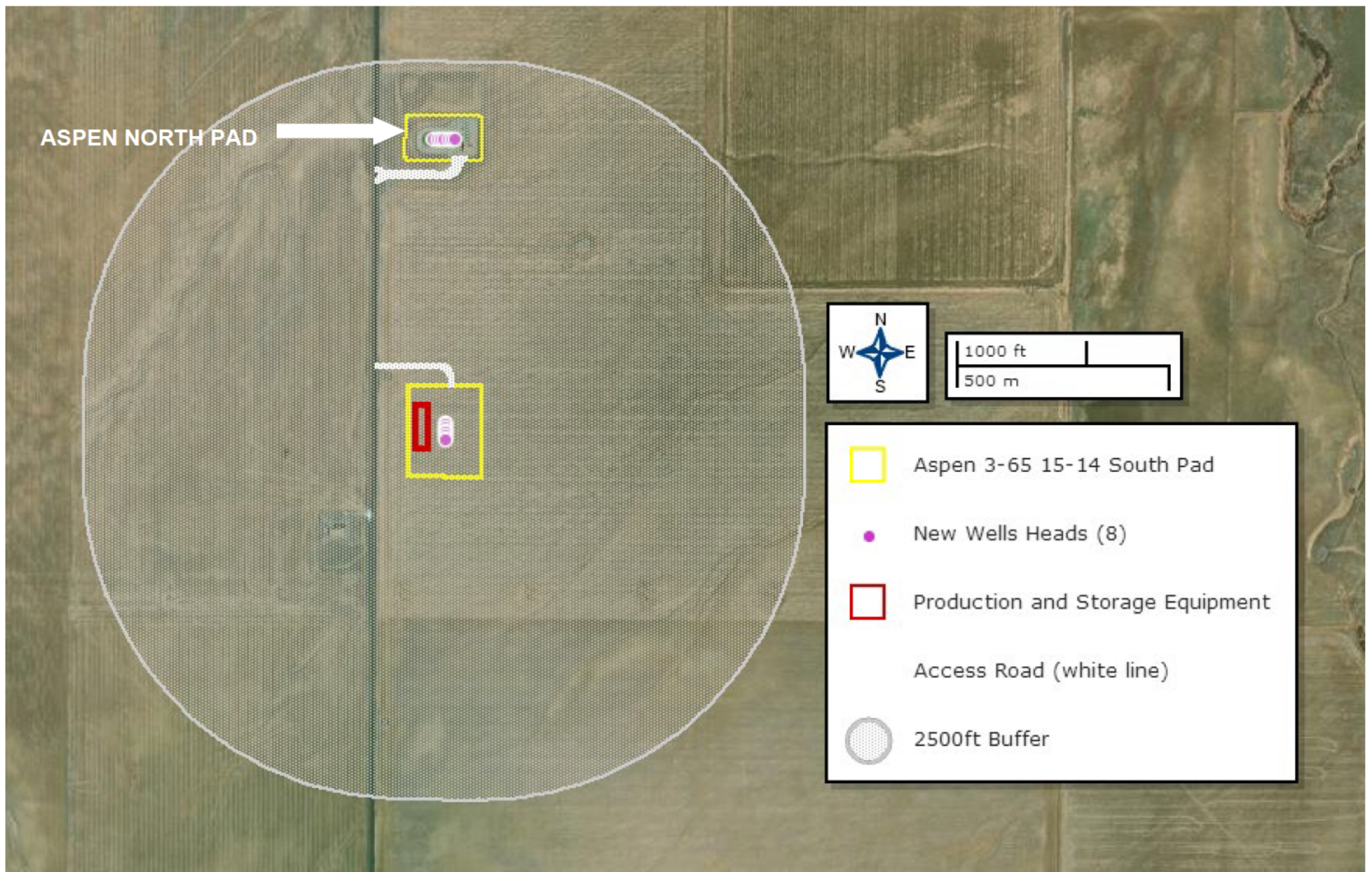


**Aspen 3-65 15-14 South Pad Access Map**  
**and Muster Point**





## 2500ft Buffer Map



**Section 4**  
**List of Emergency Contacts**

**a) Crestone Peak Resources**

Name	Office Phone	Emergency/Cell
Field Office 650 Southgate Drive Windsor, Co. 80550	NA	[REDACTED]
Crestone Peak Resources EHS on call emergency number	NA	[REDACTED]
Emergency Management Director- Lisa David	NA	[REDACTED]
Health and Safety Manager- Lisa Allen	NA	[REDACTED]
Environmental Luke Kelly	NA	[REDACTED]

**b) Crestone Peak Resources community/media relations**

Name	Office	Cell Phone
Rich Coolidge	NA	[REDACTED]

**c) First Responders**

Name	Emergency	Non-Emergency Dispatch	Office Number
Aurora Fire Rescue	911	303-627-3100	303-326-8999
Adams County Sheriff	911	303-288-1535	303-654-1850
Aurora OEM	911	303-627-3100	303-326-8999
Colorado State Patrol	911	303-239-4501	719-775-2964

**d) Regulator Contacts**

Name	Office Phone	Cell Phone
ECMC	303-894-2100	none
CDPHE	877-518-5608	none
Colorado Parks & Wildlife	303-291-7227	none
National Response Center	800-424-8802	none

**e) Medical Facilities**

Name	Office Phone	Cell Phone
University of Colorado Hospital	720-848-0000	NA
The Medical Center of Aurora	303-695-2600	NA

**f) Spill Response Organization**

Name	24/7 Emergency	Non-Emergency
EnviroServe	800-488-0910	NA

**g) Fire, explosion, associated with loss of well control.**

Name	Office Phone
Aurora Fire Rescue	911 or 303-644-3572
Wild Well Control, Inc.	281-353-5481
Northern Colorado Medical Facility (Burn Unit)	970-810-4121
Aurora Office of Emergency Management	911 or 303-326-8999

**h) Government Agencies**

Name	Office Phone
Adams County Sheriff	911 or 303-654-1850
ECMC	303-894-2100
CDPHE	877-518-5608
Adams County OEM	911 or 720-523-6600

**i) Railroad Emergency Response**

Name	Office Phone
Union Pacific Railroad	888-877-7267

## **Section 5**

### **Spill Response and Clean Up**

#### **a) Spill Response**

There are multiple types of hydrocarbons which can be released/spilled during oil and gas production and exploration. Most commonly released are unrefined products such as crude oil and produced water. Refined petroleum products such as diesel, gasoline, and motor oil spills are less common, but still equally important to mitigate. If a spill is found reportable, it will be mitigated in accordance with Colorado Energy and Carbon Management Commission (ECMC) and Colorado Department of Public Health and Environment (CDPHE) guidelines.

Once a release has been identified, it will be immediately stopped and contained if possible and is safe to do so. When containing a spill; pig blankets, snakes, absorbent materials, or earthen berms will be constructed around the release to keep material from spreading. These materials will be provided by APEX and the contract company and kept on-site. Diligent efforts will be made to minimize contact with live vegetation or open water if release is outside of secondary containment structures.

In the event of a large incident requiring outside assistance, Crestone Peak Resources has contracted with Wild Well Control who possesses a working knowledge of oil and gas operations, emergency response and Incident Command. Once notified Wild Well Control personnel can be on location from 6 to 12 hours.

#### **b) Spill Reporting**

What determines a reportable spill and to whom does the report go?

- Spill and leaks shall be reported to the local fire department by using 911 in accordance with the provisions contained in the adopted International Fire Code.
  - ***IFC § 5704.2.7.10 Leak reporting.*** *A consistent or accidental loss of liquid, or other indication of a leak from a tank or system, shall be reported immediately to the fire department, the fire code official and other authorities having jurisdiction.*
- A spill/release will be reported to the ECMC if released material is property of Crestone Peak Resources and meets the ECMC reporting thresholds (see below), an example would be crude oil released from a separator or produced water from a water vault.
- A spill/release will be reported to the Adams County LEPC if released material is

property of Crestone Peak Resources and meets the ECMC reporting thresholds (see below),

- A spill/release will be reported to the CDPHE if released material is in the custody of a third party for spills that meet CDPHE reporting thresholds, are of any size that impact or threaten to impact waters of the state, a residence or occupied structure, livestock or public byway. An example would be an oil hauler over filling a truck and spills product onto the ground next to a flowing irrigation ditch.

Spills are reportable to the ECMC in the following circumstances:

1. the spill or release impacts or threatens to impact any waters of the state, a residence or occupied structure, livestock, or a public byway.
2. a spill or release in which 1 barrel or more is released outside of berms or other secondary containment; or
3. any spill or release of 5 barrels or more. If the spill impacts or threatens to impact waters of the state (which include surface water, ground water and dry gullies or storm sewers leading to surface water), it must also be reported immediately to CDPHE (25-8-601 CRS).
4. Petroleum releases of 25 gallons or more

Once a spill is determined reportable, there is a 24-hour deadline to make initial notification to the ECMC or CDPHE depending on product ownership. Spills/releases in the custody of Crestone Peak Resources will be reported by a Company representative. Spills/releases in the custody of a third party will be reported by the responsible company's EHS Department to the appropriate agency and to Crestone Peak Resources.

These regulatory guidelines will be strictly followed by Crestone Peak Resources and any contractors operating under Crestone Peak Resources guidance during all activities.



## **Section 6**

### **Reportable quantities**

#### **a) Reportable quantities**

Mandated by Section 312 of the Emergency Planning and Community Right-To-Know Act (EPCRA) - also known as SARA Title III - the Tier II form captures information about the types, quantities, and locations of hazardous chemicals at a given facility. The form also lists contact information for the facility's designated emergency point-of-contact.

Any facility that is required to maintain MSDSs (or SDSs) under the Occupational Safety and Health Administration (OSHA) regulations for hazardous chemicals stored or used in the workplace.

Facilities with chemicals in quantities that equal or exceed the lists of lists thresholds must report.

- Propane, benzene, propene, and methane are on the lists and are known to be in crude oil. In addition, diesel is on the lists and may be stored on sites during construction.

#### **b. Reportable requirements**

If your facility will meet the requirements under 40 CFR, you must submit your Tier II report to the state every year before March 1<sup>ST</sup>.

These regulatory guidelines will be strictly followed by Crestone Peak Resources and any contractors operating under Crestone Peak Resources guidance during all activities.

## **Section 7**

### **Evacuation Information**

#### **a. Evacuation Plan Procedures (public)**

The procedure to be used in alerting nearby persons in the event of any occurrence that could pose a threat to life or property will be arranged and completed with public officials in detail.

In the event of an actual emergency, the following steps will be immediately taken:

1. The Crestone Peak Resources representative will immediately notify proper authorities, including the fire department, sheriff's office, highway patrol, and any other public officials as described above and will enlist their assistance in warning residents and transients in the calculated radius of exposure.
2. The Crestone Peak Resources will coordinate with local authorities to warn residents' down-wind of the location and within radius of exposure from the well site. Additional evacuation zones may be necessary as the situation warrants.
3. The Crestone Peak Resources representative will coordinate with appropriate emergency personnel to divert traffic in the vicinity away from the potentially dangerous area. No trespassing and warning signs will be posted at the entrance to the well site. The contract company will monitor essential and non-essential traffic on-site.
4. General:
  - a. The area included within the radius of exposure is the zone with the maximum potential hazard. When it is determined that conditions exist which create an additional area (beyond the initial zone of maximum potential hazard) vulnerable to possible hazard, public areas in the additional hazardous area will be evacuated.
  - b. In the event of a disaster, after the public areas have been evacuated and traffic stopped, it is expected that local civil authorities will have arrived and within a few hours will have assumed direction of and control of the public, including all public areas. Crestone Peak Resources will fully cooperate with these authorities and will exert every effort by careful advice to such authorities to prevent panic or rumors.
  - c. Crestone Peak Resources will dispatch appropriate personnel to the disaster site as soon as possible. The company's personnel will cooperate with and provide such information to civil authorities as they might require.

## **Section 8**

### **Coordination with First Responder Agencies**

- a) Crestone Peak Resources will communicate site construction, drill spud, completion operations and Production Turn-In-Line dates to Aurora Fire Rescue and the Aurora Office of Emergency Management for coordination/communication with local first responders. These dates will be provided a minimum of 7 business days prior to commencement or change in oil and gas development operations.
- b) In the event of an emergency requiring First Responders, Unified Command will be established between the Crestone Peak Resources appointed company man on location and First Responders present. Unified Command post will be established based on conditions present at time of incident.
- c) While foam is not currently supplied for oil and gas emergency response, Crestone Peak Resources is an active member of Colorado Preparedness and Response Network (CPRN), and a solution is being sought through a cooperative effort including other operators, First Responders and Adams County. It is Crestone Peak Resources has an established source of foam sitting at our Hub Facility off WCR -6 and WCR – 7.
- d) Crestone Peak Resources EHS representative and first responders identified in this Site Safety and Emergency Action Plan have reviewed this plan and discussed coordination efforts in the event of an emergency requiring first responder assistance.
- e) Crestone Peak Resources will provide training or walkthroughs as requested by the local first responders.

**CRESTONE PEAK RESOURCES  
OPERATING, LLC**

**ASPEN 3-65 15-14  
SOUTH PAD**

ADAMS COUNTY  
W ½ SW 1/4, Section 15, T3S,  
R65W, 6th P.M.  
ADDRESS PENDING  
LAT: 39° 47'19.54"N  
LONG: -104° 39'33.48"W  
ELEVATION 5504.4 FT

**DIRECTIONS:**  
E 56<sup>th</sup> Ave and Monaghan Rd.  
Proceed South approximately .6  
miles, then East onto access road.

**NOTIFICATIONS:**  
-NATIONAL RESPONSE CENTER  
800-424-8802  
-CRESTONE PEAK EMERGENCY  
RESPONSE NUMBER  
303-659-7740  
-EMERGENCIES- 911  
-AURORA FIRE RESCUE  
303-627-3100  
-ADAMS COUNTY SHERIFF  
303-654-1850  
-UNIVERSITY OF COLORADO HOSPITAL  
720-848-0000

**CRITICAL RECEPTORS:**  
NONE

