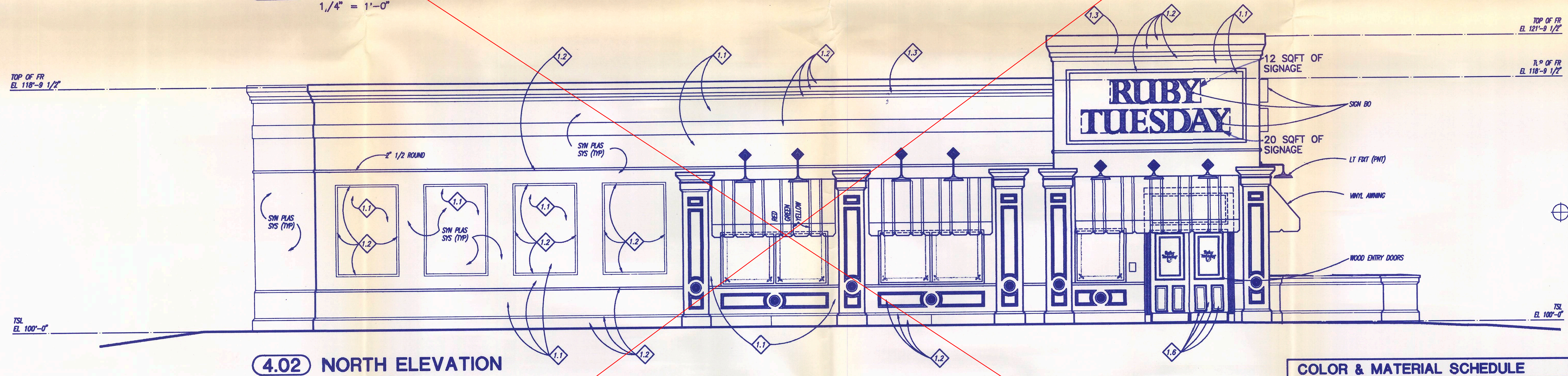
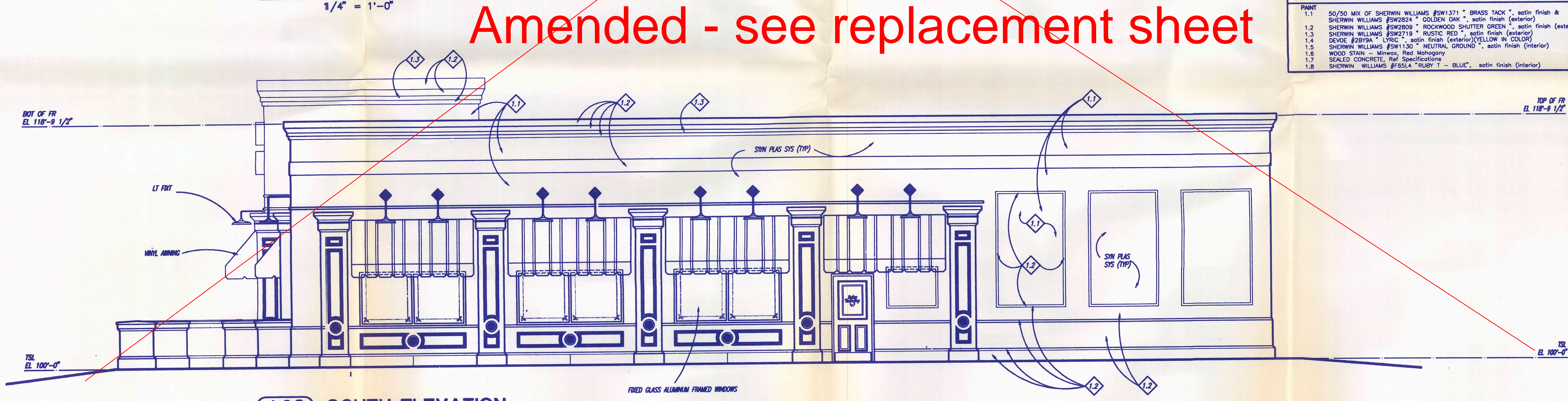


**4.01 WEST ELEVATION**  
1/4" = 1'-0"



**4.02 NORTH ELEVATION**  
1/4" = 1'-0"



**4.03 SOUTH ELEVATION**  
1/4" = 1'-0"

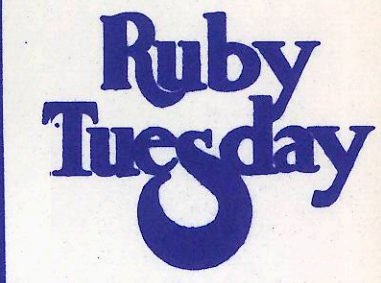
COLOR & MATERIAL SCHEDULE	
PAINT	
1.1	50/50 MIX OF SHERWIN WILLIAMS #SW1371 "BRASS TACK", satin finish & SHERWIN WILLIAMS #SW2824 "GOLDEN OAK", satin finish (exterior)
1.2	SHERWIN WILLIAMS #SW2809 "ROCKWOOD SHUTTER GREEN", satin finish (exterior)
1.3	SHERWIN WILLIAMS #SW2719 "RUSTIC RED", satin finish (exterior)
1.4	DEVCOE #28Y9A "LYRIC", satin finish (exterior) (YELLOW IN COLOR)
1.5	SHERWIN WILLIAMS #SW1130 "NEUTRAL GROUND", satin finish (interior)
1.6	WOOD STAIN - Minwax, Red Mahogany
1.7	SEALED CONCRETE, Ref Specifications
1.8	SHERWIN WILLIAMS #F65LA "RUBY T - BLUE", satin finish (interior)

Amended - see replacement sheet

CONTRACTOR SHALL VERIFY ALL CONDITIONS AND DIMENSIONS AT THE JOB SITE AND NOTIFY THE ARCHITECTS OF ANY DIMENSIONAL ERRORS, OMISSIONS OR DISCREPANCIES BEFORE BEGINNING OR FABRICATING ANY WORK OR NOT SCALE DRAWINGS

DAVID SCOTT  
WINDLE, AIA

AURORA, COLORADO  
BLACKHAWK PONTE



JOB NUMBER  
**94157.04**

SHEET NUMBER  
**A4**  
OF 18 SHEETS

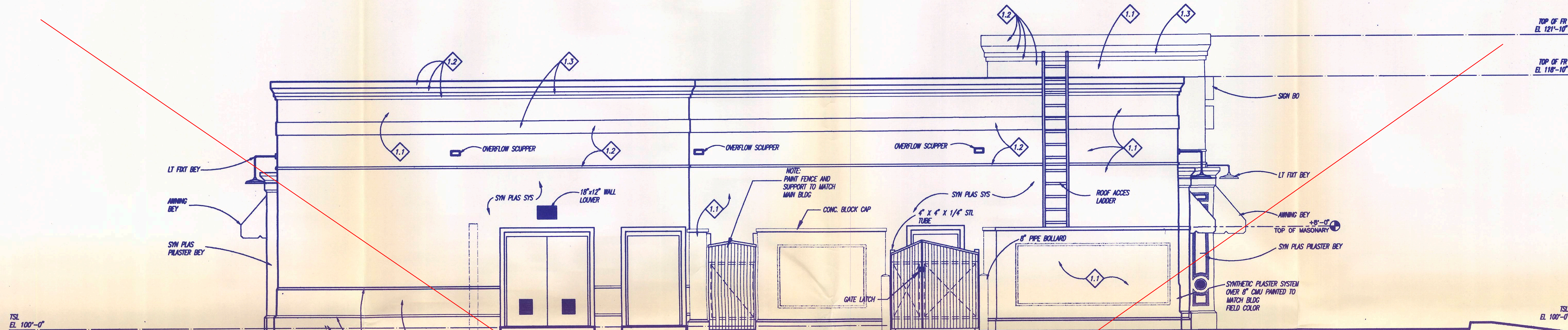
DATE OF ORIGINAL ISSUE  
24 January 1995

24 January 1995  
3 of 4

BLACKHAWK PONTE (RUBY TUESDAY)

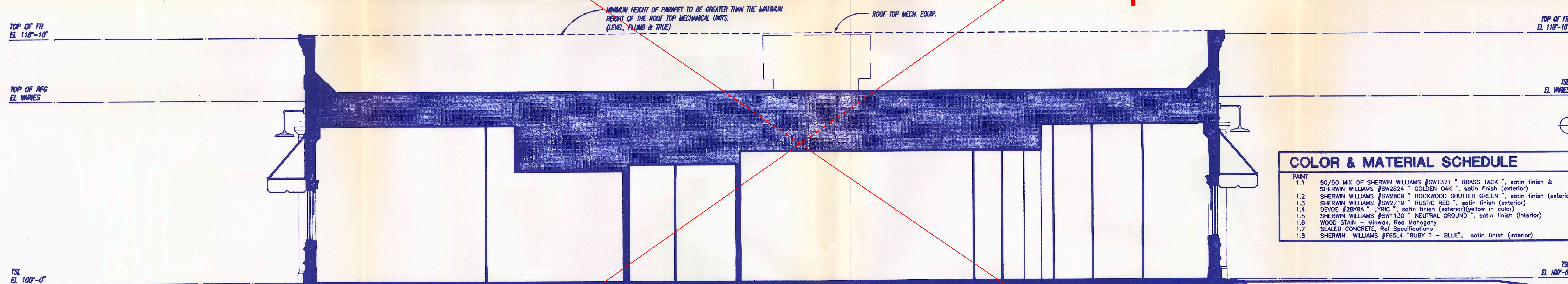
DATE OF THIS PRINTING  
**83-6015-C**

NO. DATE REVISIONS BY



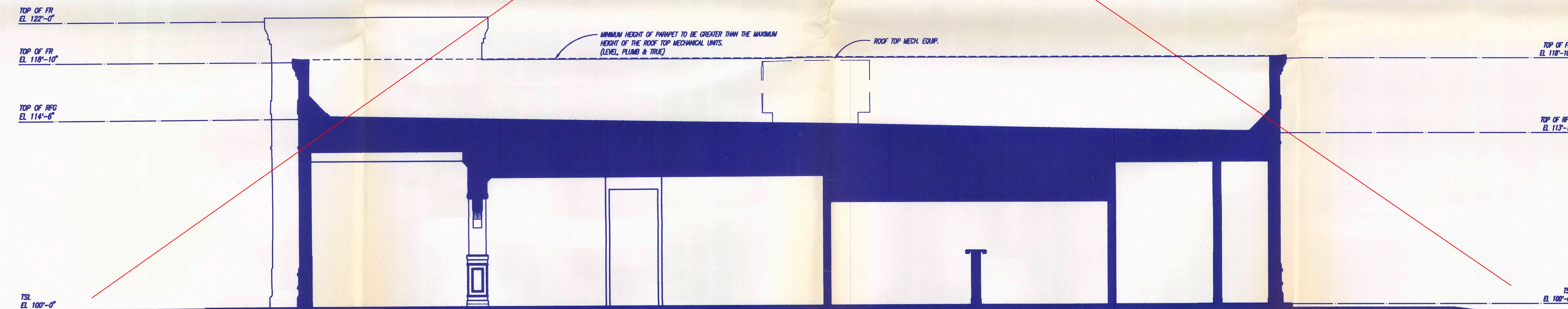
**5.01 EAST ELEVATION**  
1/4" = 1'-0"

Amended - see replacement sheet



**5.02 BUILDING SECTION**  
1/4" = 1'-0"

COLOR & MATERIAL SCHEDULE	
PAINT	
1.1	50/50 MIX OF SHERWIN WILLIAMS #SW1371 "BRASS TACK", satin finish & SHERWIN WILLIAMS #SW2824 "GOLDEN OAK", satin finish (exterior)
1.2	SHERWIN WILLIAMS #SW2809 "ROCKWOOD SHUTTER GREEN", satin finish (exterior)
1.3	SHERWIN WILLIAMS #SW2719 "RUSTIC RED", satin finish (exterior)
1.4	DEVOC #28709A "LYRIC", satin finish (exterior) (yellow in color)
1.5	SHERWIN WILLIAMS #SW1130 "NEUTRAL GROUND", satin finish (interior)
1.6	WOOD STAIN - Minwax, Red Mahogany
1.7	SEALED CONCRETE, Ref Specifications
1.8	SHERWIN WILLIAMS #F65L4 "RUBY T - BLUE", satin finish (interior)



**5.03 BUILDING SECTION**  
1/4" = 1'-0"

CONTRACTOR SHALL VERIFY ALL CONDITIONS AND DIMENSIONS AT THE JOB SITE AND NOTIFY THE ARCHITECTS OF ANY DIMENSIONAL ERRORS, OMISSIONS OR DISCREPANCIES BEFORE BEGINNING OR FABRICATING ANY WORK DO NOT SCALE DRAWINGS

**DAVID SCOTT WINDLE, AIA**

**AURORA, COLORADO BLACKHAWK PONTE**

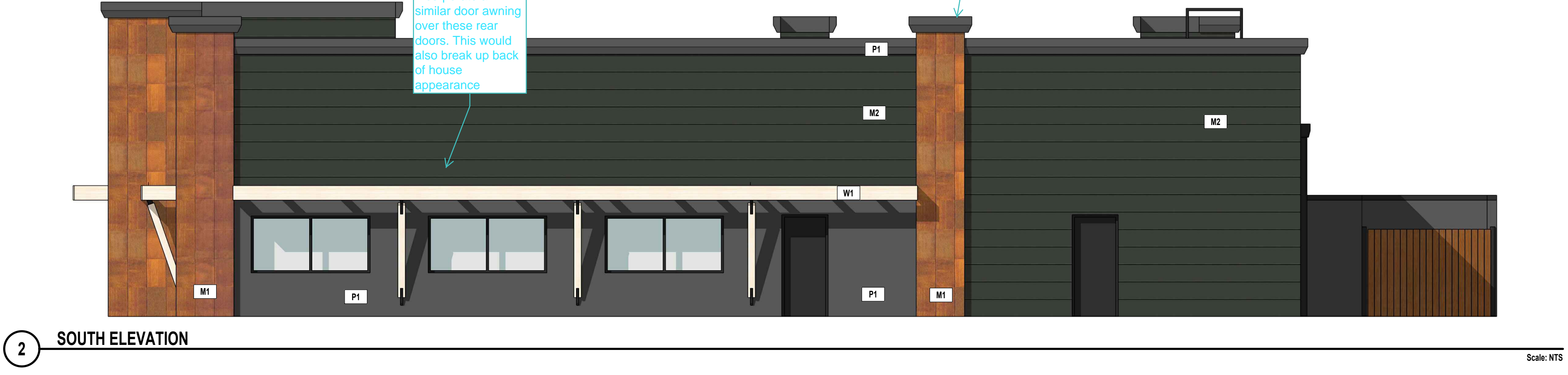
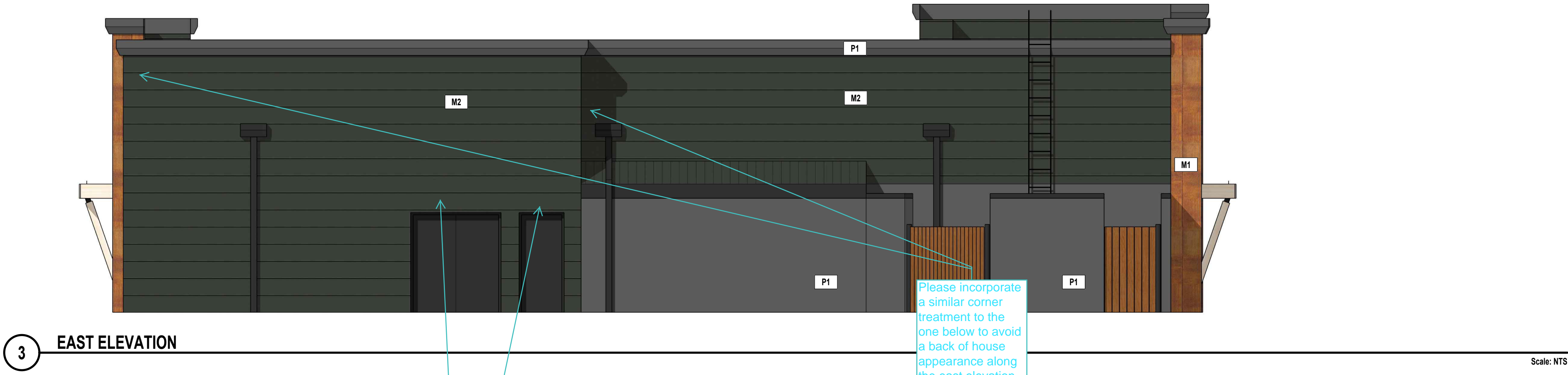
**Ruby Tuesday**

JOB NUMBER  
**94157.04**

SHEET NUMBER  
**A5**  
OF XX SHEETS

DATE OF ORIGINAL ISSUE  
24 January 1995

NO. DATE REVISIONS BY



EXTERIOR ELEVATIONS KEYED NOTES

1 SIGNAGE SHOWN IS FOR SCHEMATIC USE ONLY - SIGNAGE SUBMITTED UNDER SEPARATE PERMIT

PAINT			
ITEM	PRODUCT	MANUFACTURER	DESCRIPTION
P1	PAINT	BENJAMIN MOORE	#1617 CHEATING HEART
M1	WALL PANEL	RUSTWALL	A606-4 AKA CORTEN WEATHERING STEEL
M2	WALL PANEL	WESTERN REVEAL	CORTEN METAL WALL PANEL 1.0 REVEAL - 14" FACE -MATTE BLACK
W1	EXTERIOR PANEL	TRESPA	WHITE PINE TRESPA PURA NFC PU20



© ALL DRAWINGS AND WRITTEN MATERIAL CONTAINED HEREIN ARE THE PROPERTY OF THE LINGLE DESIGN GROUP, INC. THEY MAY NOT BE REVISED, COPIED, REUSED, OR DISCLOSED IN ANY MANNER WITHOUT WRITTEN AUTHORIZATION FROM THE ARCHITECT.

PROJECT #: 19-227  
DRAWN BY: CMW CHECKED BY: BVE

REVISIONS	
DATE	DESCRIPTION
△	-
△	-
△	-
△	-
△	-

Blackhawk Pointe  
Multi-tenant  
Remodel

ADDRESS  
Blackhawk Pointe  
Aurora, CO

SHEET TITLE  
EXTERIOR ELEVATIONS

SHEET NUMBER: