

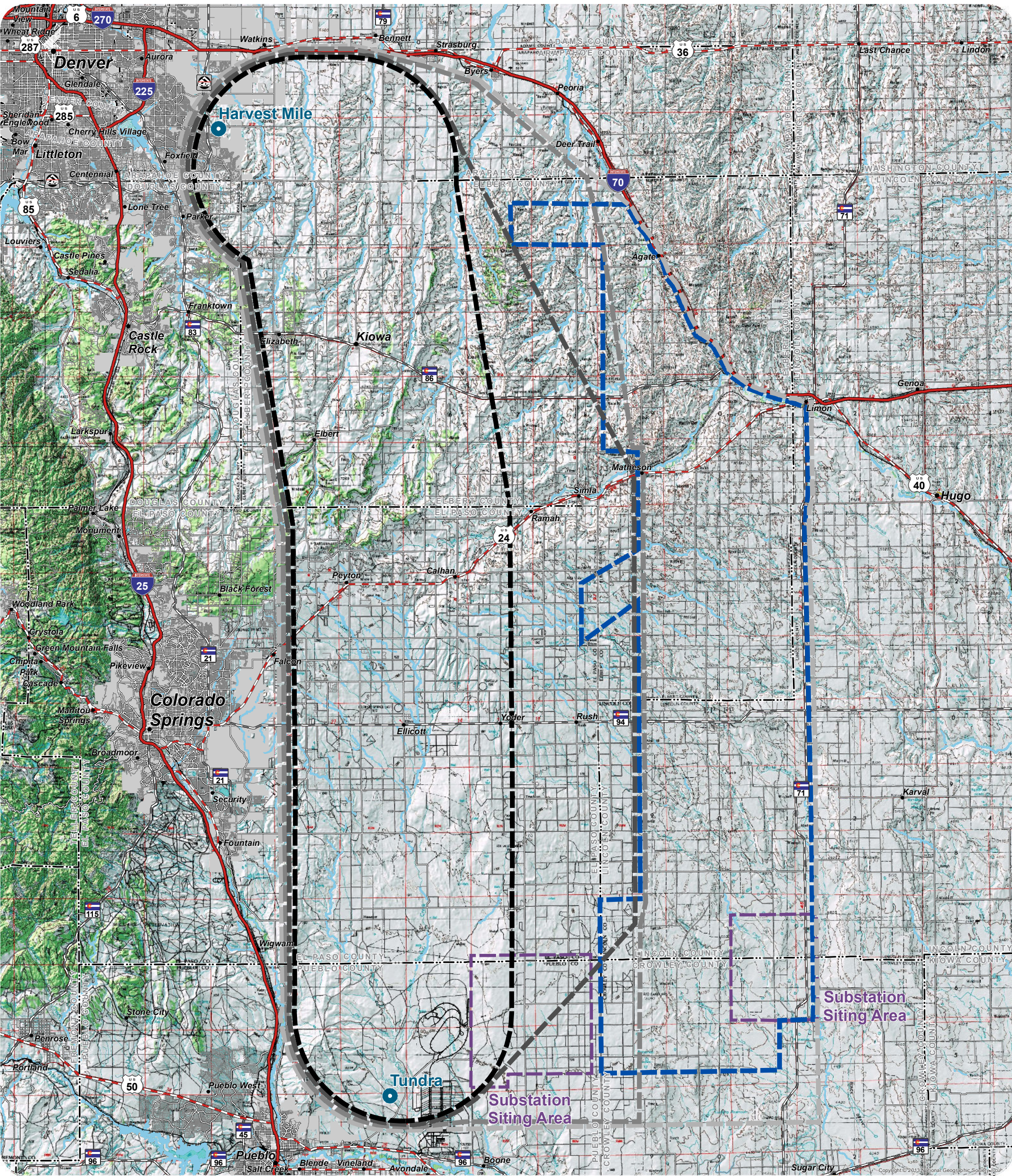
## **Appendix A: Resource Maps (continued)**



This page intentionally left blank.



# COLORADO'S POWER PATHWAY



- Legend**
- Existing Substation to be Expanded

CPCN Study Area

Fall 2021 Study Area

Winter/Spring 2022 Study Area

All Inclusive Study Area

Eastern Review Area

New 345kV Substation Siting Area
- Hydrology
- (NHD 2020)
- Waterbody

- Transportation**
- (CDOT 2021, BTS 2020)
- Interstate
- U.S. Highway
- State Highway
- Local Road
- Railroad

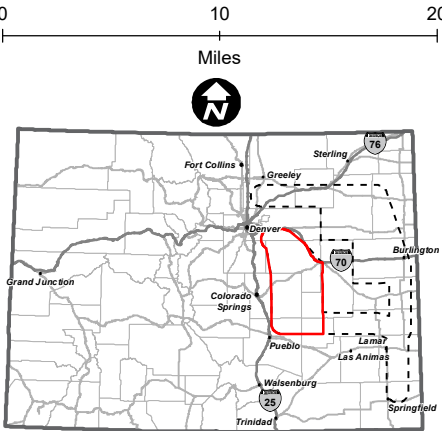
Boundary

(CDOT 2021, DOLA 2021)

Municipal Boundary

County

**PRELIMINARY, SUBJECT TO CHANGE**  
The information contained herein is believed to be accurate and suitable for limited internal uses only. Xcel Energy/ Public Service Company of Colorado makes no warranty as to the accuracy or suitability of any information contained herein for use by third parties. The accuracy of this map and the information depicted should be verified prior to use. The user shall assume all risk and responsibility for any and all damages, including consequential damages, which may arise from the user's reliance on this information.



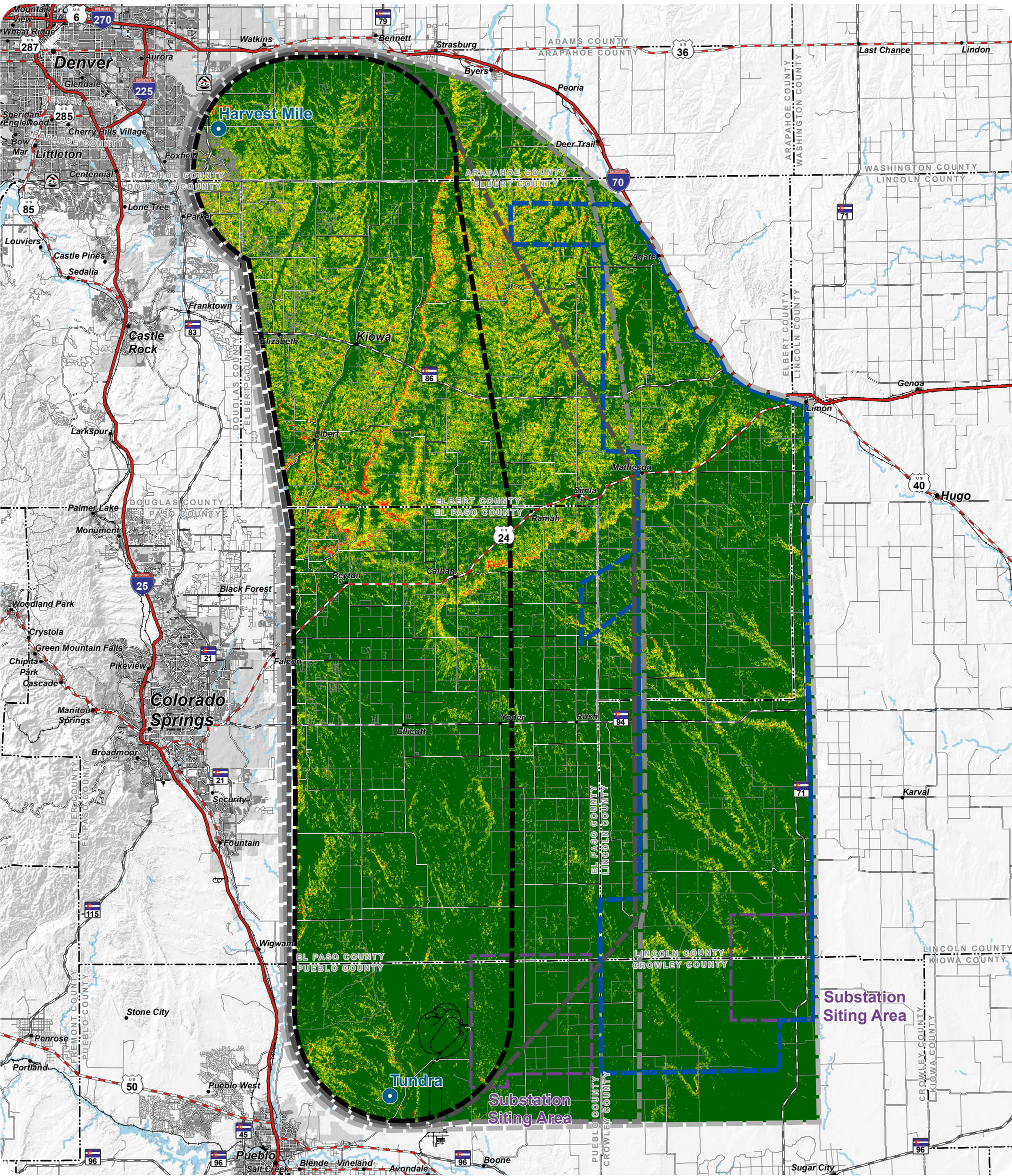
Revised: 1/18/2023 | NOT FOR CONSTRUCTION  
Path: P:\1163\_0025\_CO\_Power\_Pathway\GIS\Layouts\Segment\_5\Resource\_Maps\Topo.mxd

## Segment 5 - Tundra to Harvest Mile

## Topographic Map



# COLORADO'S POWER PATHWAY



**Legend**

- Existing Substation to be Expanded
- CPCN Study Area
- Fall 2021 Study Area
- Winter/Spring 2022 Study Area
- All Inclusive Study Area
- Eastern Review Area
- New 345kV Substation Siting Area
- Hydrology (NHD 2020)
- Waterbody

**Transportation**  
(CDOT 2021, BTS 2020)

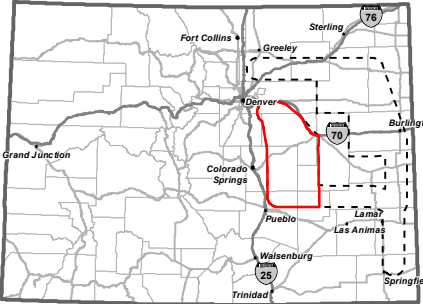
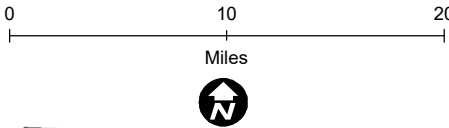
- Interstate
- U.S. Highway
- State Highway
- Local Road
- Railroad

**Boundary**  
(CDOT 2021, DOLA 2021)

- Municipal Boundary
- County

**Slope**  
(USGS 2020)  
(Derived from USGS 10-meter DEM)

- 0 - 5%
- 5 - 10%
- 10 - 15%
- 15 - 20%
- > 20%



**PRELIMINARY, SUBJECT TO CHANGE**  
The information contained herein is believed to be accurate and suitable for limited internal uses only. Xcel Energy/ Public Service Company of Colorado makes no warranty as to the accuracy or suitability of any information contained herein for use by third parties. The accuracy of this map and the information depicted should be verified prior to use. The user shall assume all risk and responsibility for any and all damages, including consequential damages, which may arise from the user's reliance on this information.

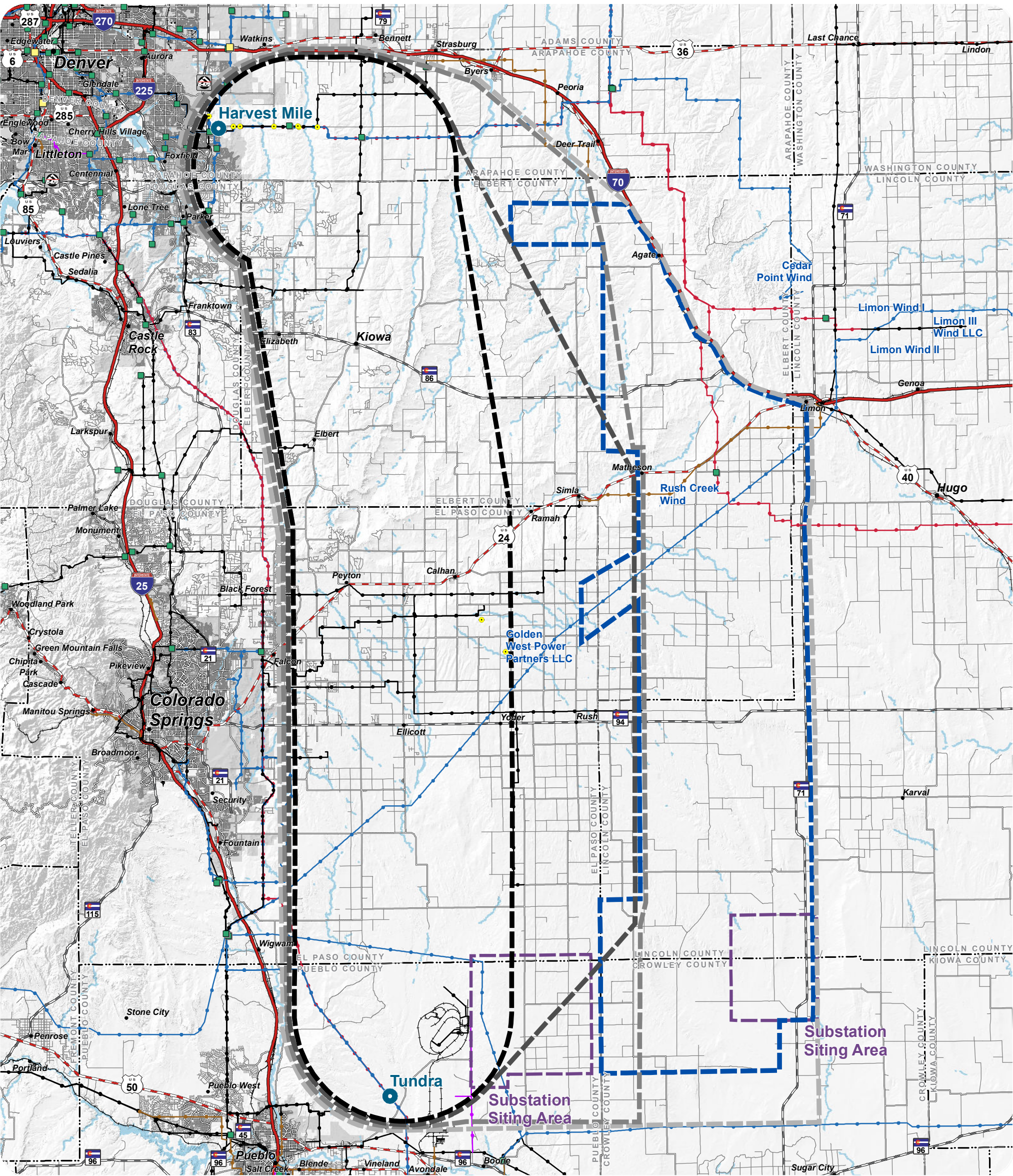
Revised: 1/18/2023 | NOT FOR CONSTRUCTION  
Path: P:\1163\_0025\_CO\_Power\_Pathway\GIS\Layouts\Segment\_5\Resource\_Maps\Slope.mxd

## Segment 5 - Tundra to Harvest Mile

## Slope



# COLORADO'S POWER PATHWAY



## Legend

- Existing Substation to be Expanded
  - CPCN Study Area
  - Fall 2021 Study Area
  - Winter/Spring 2022 Study Area
  - All Inclusive Study Area
  - Eastern Review Area
  - New 345kV Substation Siting Area

**Boundary**  
(CDOT 2021, DOLA 2021)

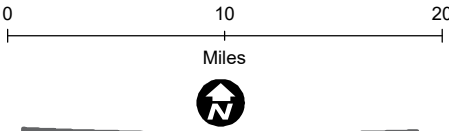
  - Municipal Boundary
  - County
  - State
- Existing Electric Infrastructure**  
(PSCo 2020, FAA 2021)

  - Power Plant
  - Substation
  - Operational Wind Generation Facility
  - Solar Facility
  - 69kV Transmission Line
  - 115kV Transmission Line
  - 138kV Transmission Line
  - 230kV Transmission Line
  - 345kV Transmission Line

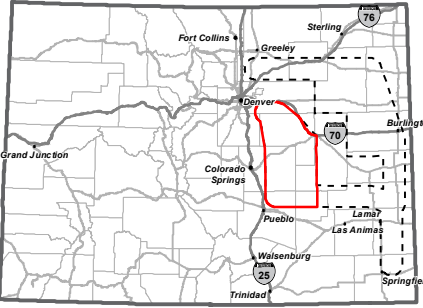
- Transportation**  
(CDOT 2021, BTS 2020)

  - Interstate
  - U.S. Highway
  - State Highway
  - Local Road
  - Railroad
- Hydrology**  
(NHD 2020)

  - Waterbody



**PRELIMINARY, SUBJECT TO CHANGE**  
The information contained herein is believed to be accurate and suitable for limited internal uses only. Xcel Energy/ Public Service Company of Colorado makes no warranty as to the accuracy or suitability of any information contained herein for use by third parties. The accuracy of this map and the information depicted should be verified prior to use. The user shall assume all risk and responsibility for any and all damages, including consequential damages, which may arise from the user's reliance on this information.

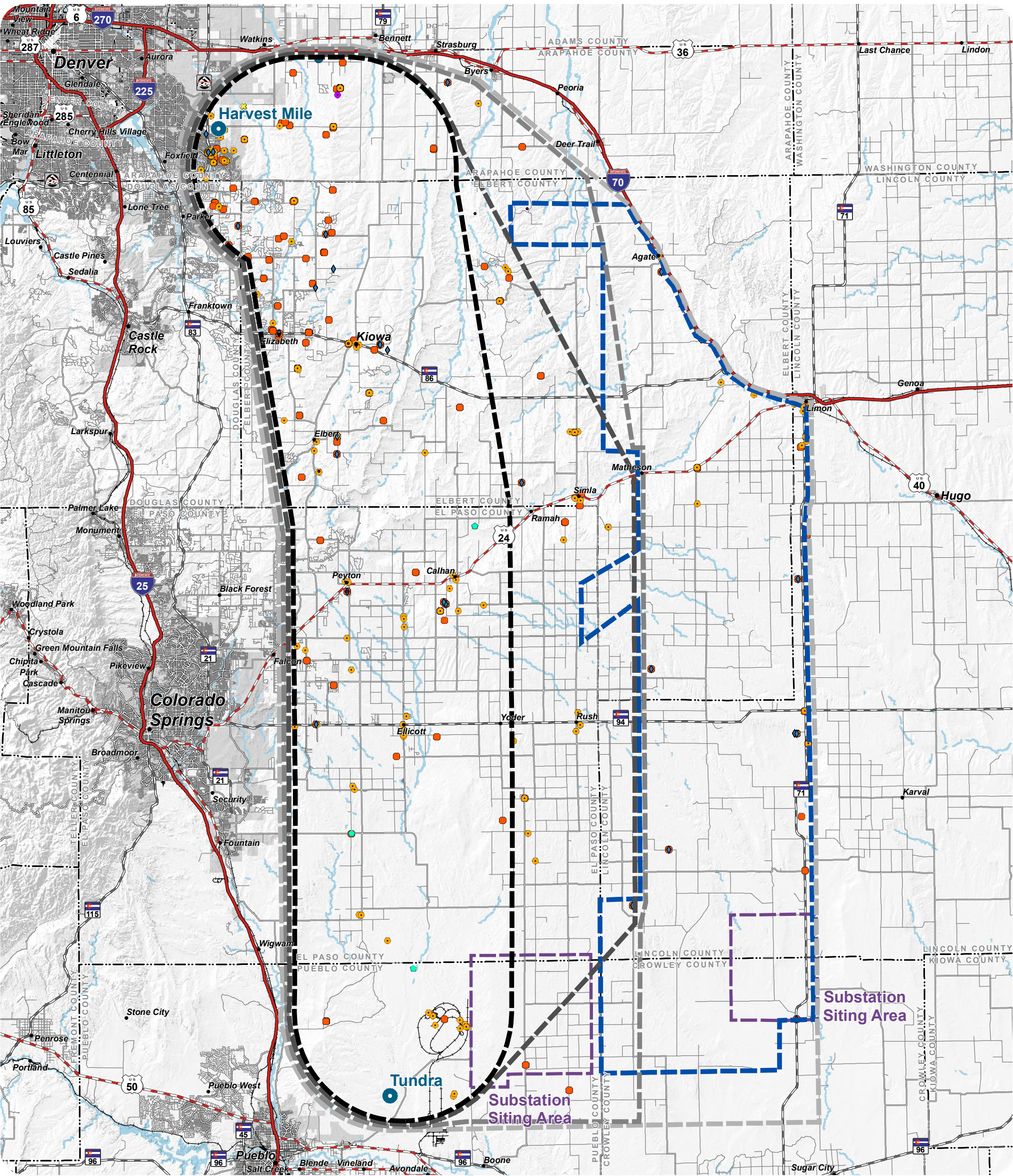


## Segment 5 - Tundra to Harvest Mile

## Existing Electric Infrastructure



# COLORADO'S POWER PATHWAY



## Legend

- Existing Substation to be Expanded
- CPCN Study Area
- Fall 2021 Study Area
- Winter/Spring 2022 Study Area
- All Inclusive Study Area
- Eastern Review Area
- New 345kV Substation Siting Area
- Boundary**  
(CDOT 2021, DOLA 2021)
- Municipal Boundary
- County

## Communication Facilities (HIFLD 2021)

- AM Transmission Tower
- Antenna Structure
- Cellular Tower
- FM Transmission Tower
- Land Mobile Private Transmission
- Land Mobile Broadcast Tower
- Land Mobile Commercial Transmission Tower
- Microwave Service Tower
- Paging Transmission Tower
- NEXRAD

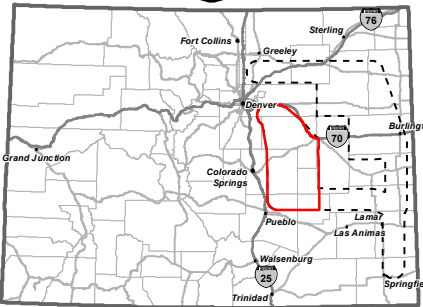
## Transportation (CDOT 2021, BTS 2020)

- Interstate
- U.S. Highway
- State Highway
- Local Road
- Railroad

## Hydrology (NHD 2020)

- Waterbody

0 10 20  
Miles



**PRELIMINARY, SUBJECT TO CHANGE**  
The information contained herein is believed to be accurate and suitable for limited internal uses only. Xcel Energy/ Public Service Company of Colorado makes no warranty as to the accuracy or suitability of any information contained herein for use by third parties. The accuracy of this map and the information depicted should be verified prior to use. The user shall assume all risk and responsibility for any and all damages, including consequential damages, which may arise from the user's reliance on this information.

Revised: 1/20/2023 | NOT FOR CONSTRUCTION

Path: P:\1163\_0025\_CO\_Power\_Pathway\GIS\Layouts\Segment\_5\Resource\_Maps\Communications.mxd

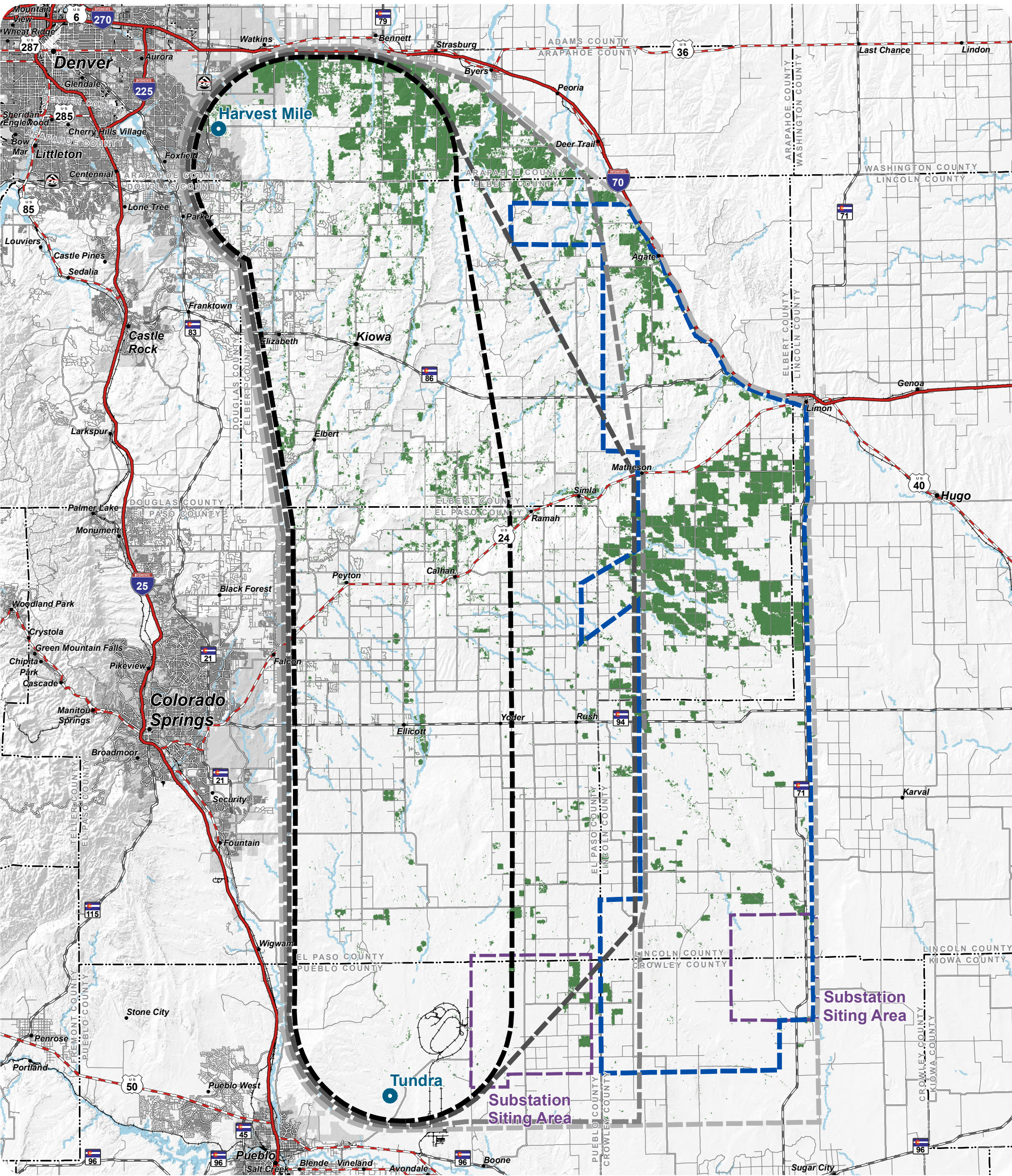
## Segment 5 - Tundra to Harvest Mile

## Communication Facilities

[Back to TOC](#)



# COLORADO'S POWER PATHWAY



Existing Substation to be Expanded

CPCN Study Area

Fall 2021 Study Area

Winter/Spring 2022 Study Area

All Inclusive Study Area

Eastern Review Area

New 345kV Substation Siting Area

Hydrology

(NHD 2020)

Waterbody

Transportation

(CDOT 2021, BTS 2020)

Interstate

U.S. Highway

State Highway

Local Road

Railroad

Boundary

(CDOT 2021, DOLA 2021)

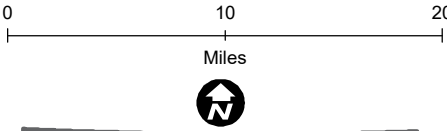
Municipal Boundary

County

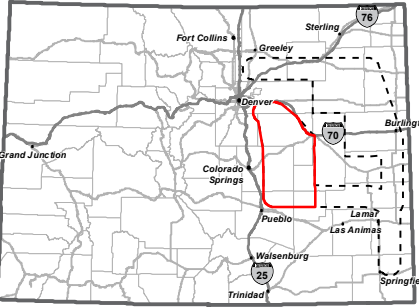
Agricultural Areas

(USDA 2020, EPA 2021)

Irrigated Land

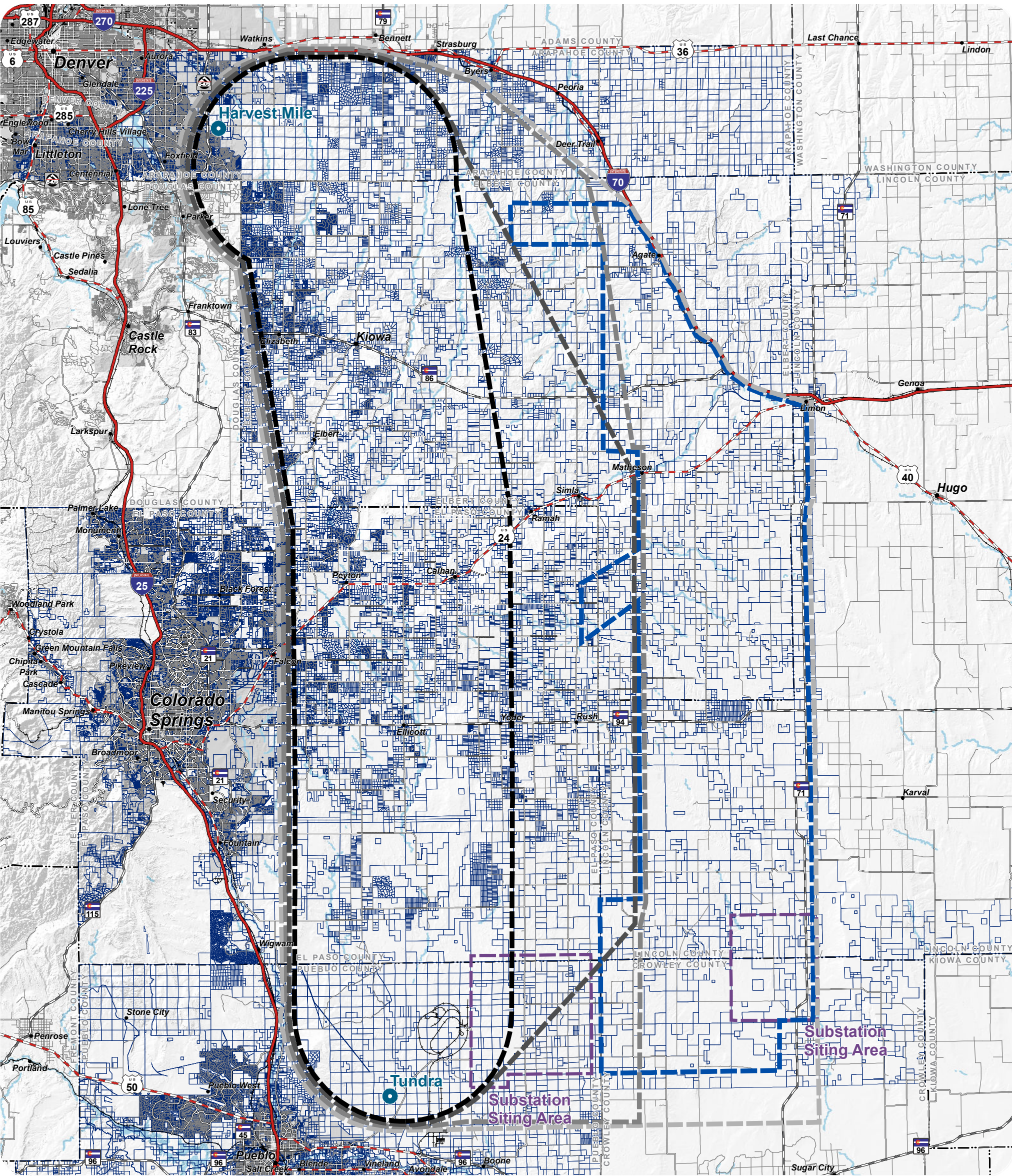


**PRELIMINARY, SUBJECT TO CHANGE**  
The information contained herein is believed to be accurate and suitable for limited internal uses only. Xcel Energy/ Public Service Company of Colorado makes no warranty as to the accuracy or suitability of any information contained herein for use by third parties. The accuracy of this map and the information depicted should be verified prior to use. The user shall assume all risk and responsibility for any and all damages, including consequential damages, which may arise from the user's reliance on this information.





# COLORADO'S POWER PATHWAY



### Legend

- Existing Substation to be Expanded

CPCN Study Area

Fall 2021 Study Area

Winter/Spring 2022 Study Area

All Inclusive Study Area

Eastern Review Area

New 345kV Substation Siting Area
- Hydrology**  
(NHD 2020)

Waterbody
- Transportation**  
(CDOT 2021, BTS 2020)

Interstate

U.S. Highway

State Highway

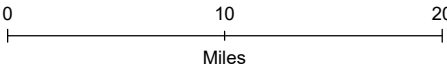
Local Road

Railroad
- Boundary**  
(CDOT 2021, DOLA 2021)

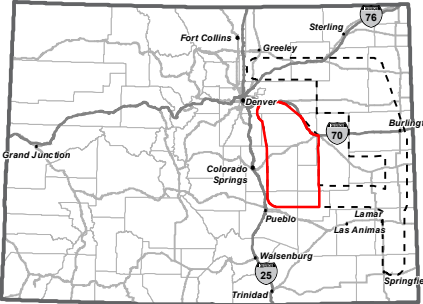
Municipal Boundary

County
- Parcels**  
(El Paso Co, Pueblo Co, Arapahoe Co, Tetra Tech 2021)

Parcel



Miles



**PRELIMINARY, SUBJECT TO CHANGE**  
The information contained herein is believed to be accurate and suitable for limited internal uses only. Xcel Energy/ Public Service Company of Colorado makes no warranty as to the accuracy or suitability of any information contained herein for use by third parties. The accuracy of this map and the information depicted should be verified prior to use. The user shall assume all risk and responsibility for any and all damages, including consequential damages, which may arise from the user's reliance on this information.

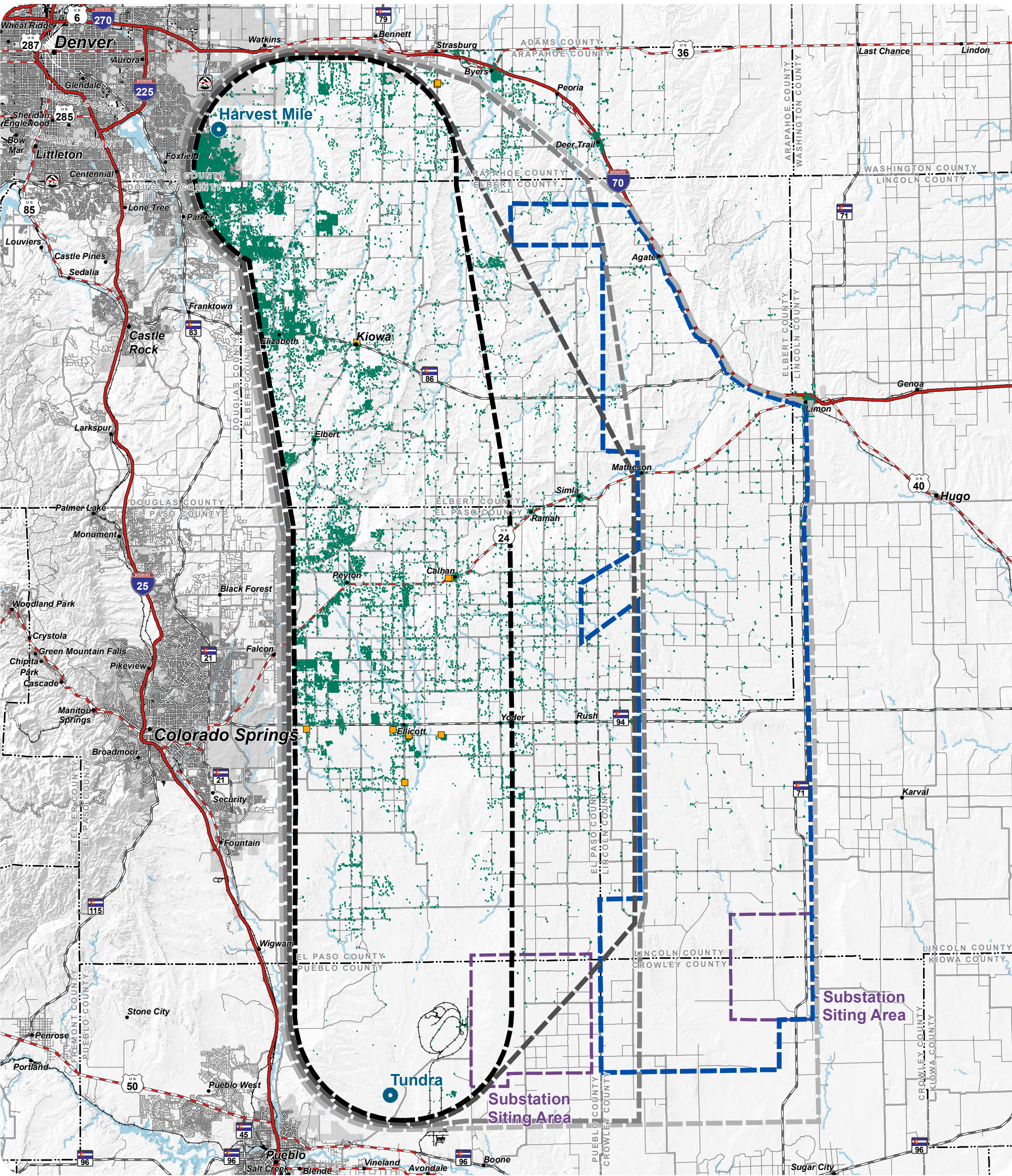
Revised: 1/18/2023 | NOT FOR CONSTRUCTION  
Path: P:\1163\_0025\_CO\_Power\_Pathway\GIS\Layouts\Segment\_5\Resource\_Maps\Parcels.mxd

## Segment 5 - Tundra to Harvest Mile

### Parcels



# COLORADO'S POWER PATHWAY



### Legend

- Existing Substation to be Expanded
  - CPCN Study Area
  - Fall 2021 Study Area
  - Winter/Spring 2022 Study Area
  - All Inclusive Study Area
  - Eastern Review Area
  - New 345kV Substation Siting Area
- #### Hydrology

(NHD 2020)

  - Waterbody
- #### Transportation

(CDOT 2021, BTS 2020)

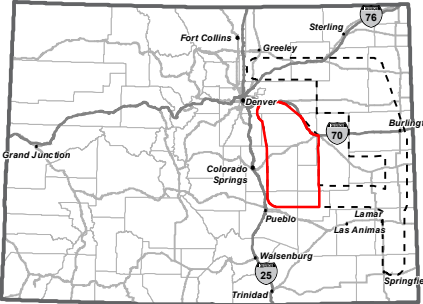
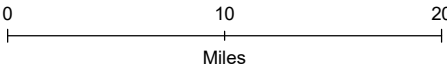
  - Interstate
  - U.S. Highway
  - State Highway
  - Local Road
  - Railroad
- #### Boundary

(CDOT 2021, DOLA 2021)

  - Municipal Boundary
  - County
- #### Structures

(Microsoft 2021, HIFLD 2021)

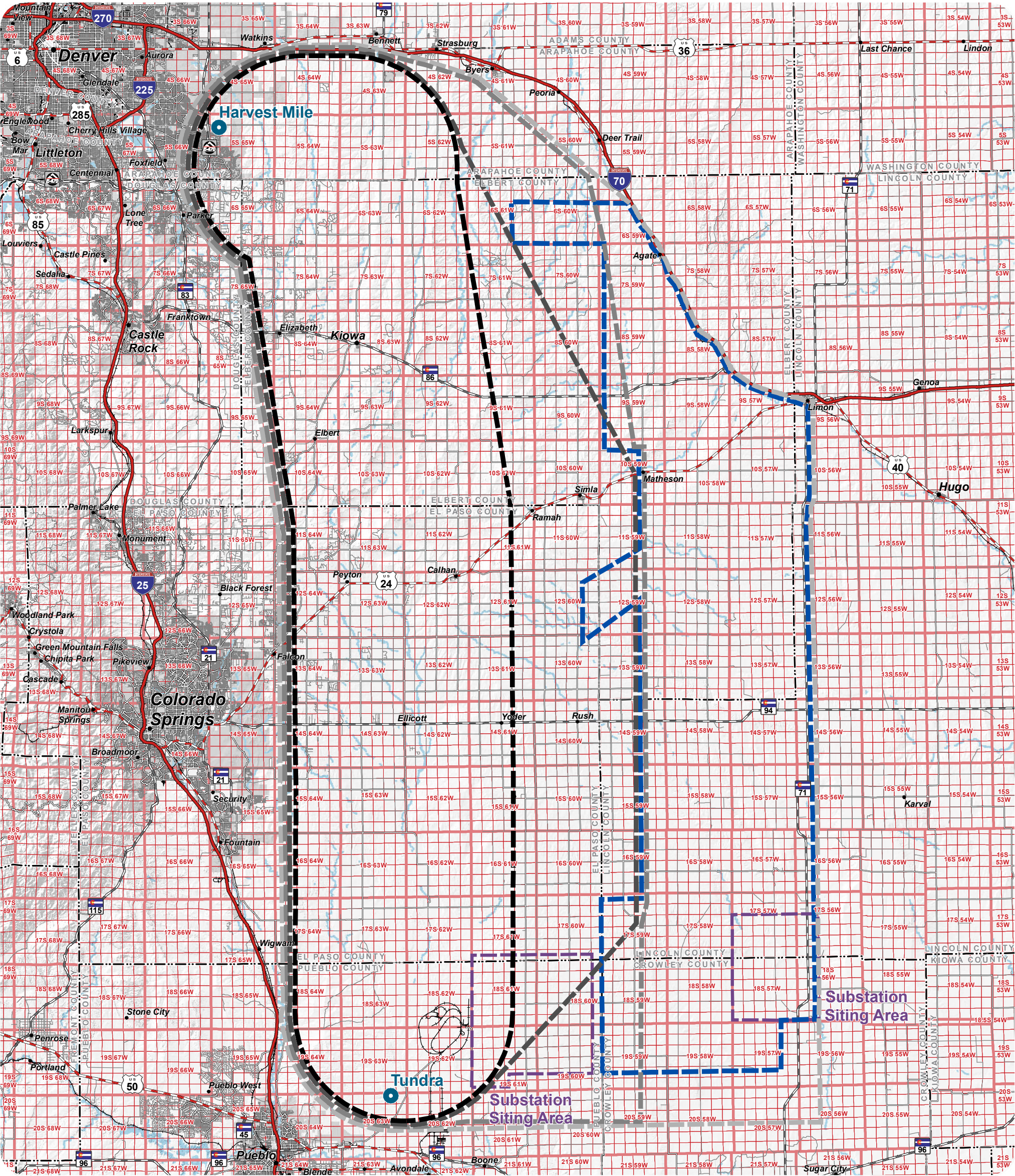
  - Mobile Home Park
  - Residential or Other Structure



**PRELIMINARY, SUBJECT TO CHANGE**  
The information contained herein is believed to be accurate and suitable for limited internal uses only. Xcel Energy/ Public Service Company of Colorado makes no warranty as to the accuracy or suitability of any information contained herein for use by third parties. The accuracy of this map and the information depicted should be verified prior to use. The user shall assume all risk and responsibility for any and all damages, including consequential damages, which may arise from the user's reliance on this information.



# COLORADO'S POWER PATHWAY



● Existing Substation to be Expanded

CPCN Study Area

Fall 2021 Study Area

Winter/Spring 2022 Study Area

All Inclusive Study Area

Eastern Review Area

New 345kV Substation Siting Area

Hydrology

(NHD 2020)

Waterbody

Transportation

(CDOT 2021, BTS 2020)

Interstate

U.S. Highway

State Highway

Local Road

Railroad

Boundary

(CDOT 2021, DOLA 2021)

Municipal Boundary

County

PLSS

(BLM 2020)

Township

Section

01020

Miles

North Arrow

Map of Colorado showing the location of Segment 5 in the central part of the state.

**PRELIMINARY, SUBJECT TO CHANGE**  
The information contained herein is believed to be accurate and suitable for limited internal uses only. Xcel Energy/ Public Service Company of Colorado makes no warranty as to the accuracy or suitability of any information contained herein for use by third parties. The accuracy of this map and the information depicted should be verified prior to use. The user shall assume all risk and responsibility for any and all damages, including consequential damages, which may arise from the user's reliance on this information.

Segment 5 - Tundra to Harvest Mile

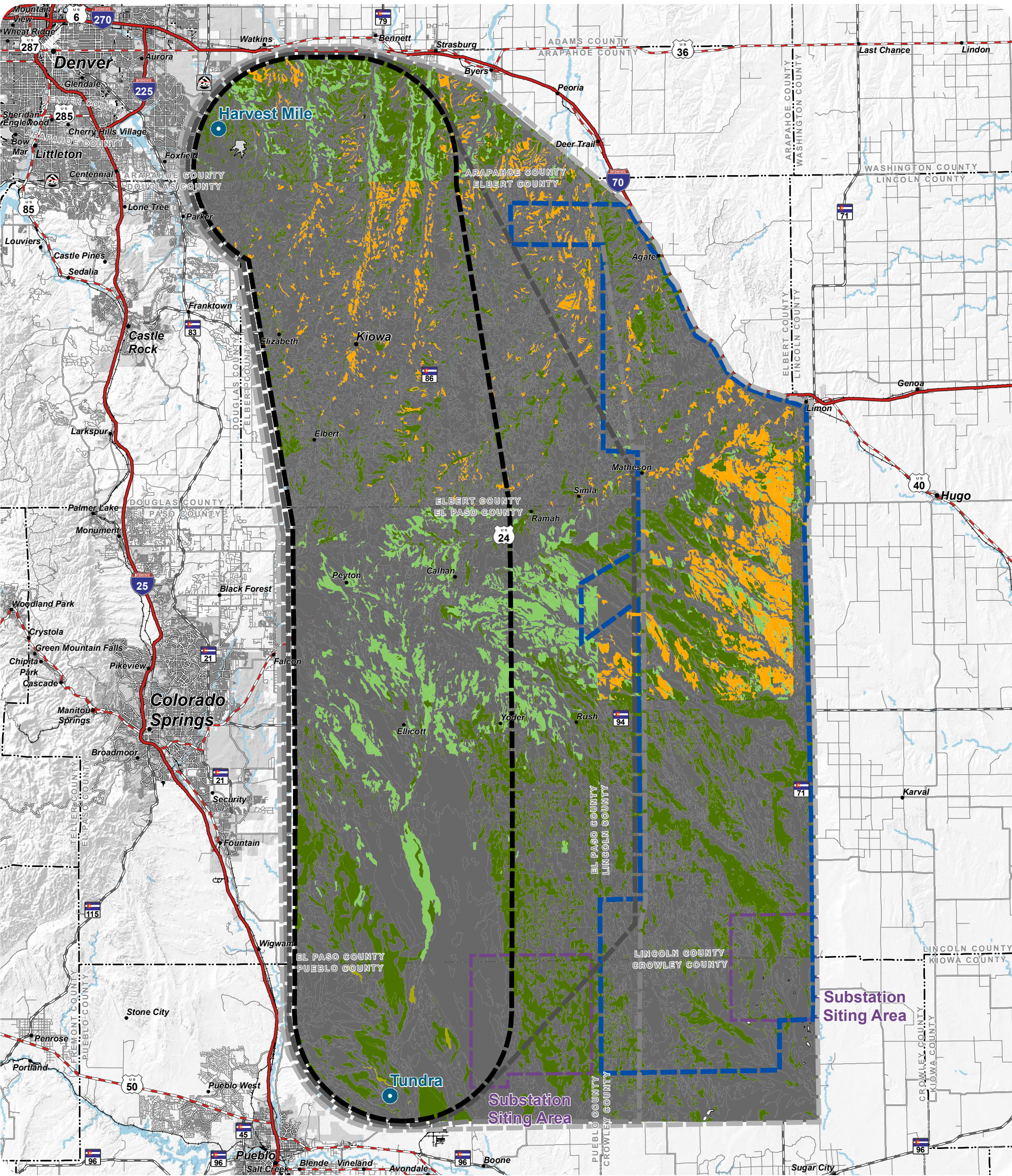
Public Land Survey

Back to TOC

[22]



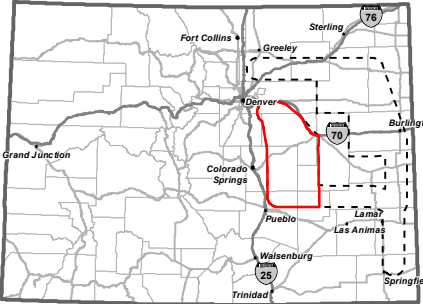
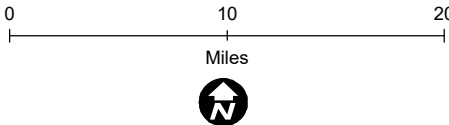
# COLORADO'S POWER PATHWAY



## Legend

- Existing Substation to be Expanded
- CPCN Study Area
- Fall 2021 Study Area
- Winter/Spring 2022 Study Area
- All Inclusive Study Area
- Eastern Review Area
- New 345kV Substation Siting Area
- Hydrology (NHD 2020)
- Waterbody
- Transportation (CDOT 2021, BTS 2020)
- Interstate
- U.S. Highway
- State Highway
- Local Road
- Railroad
- Boundary (CDOT 2021, DOLA 2021)
- Municipal Boundary
- County

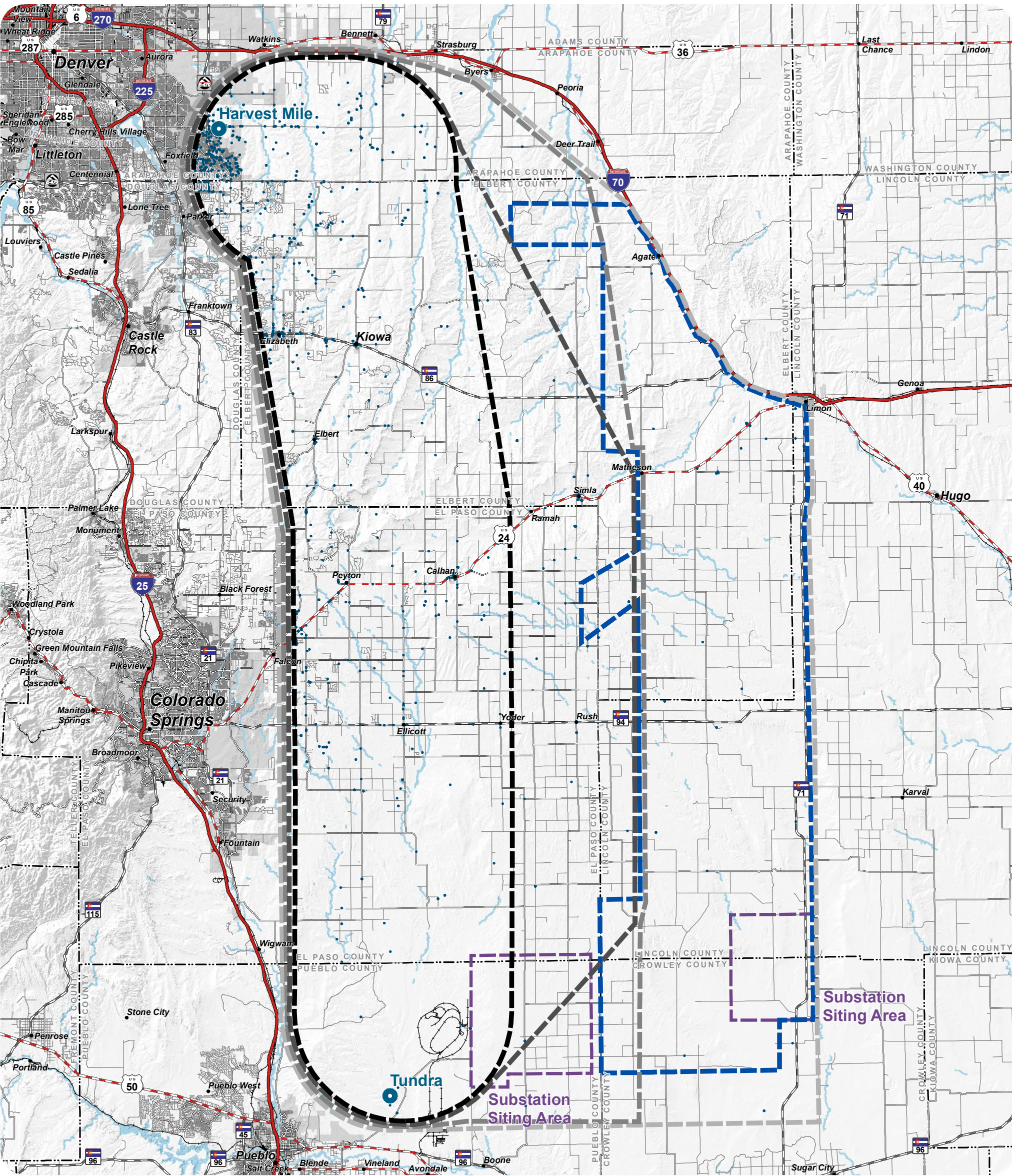
- Prime Farmland (NRCS 2020)
- Prime farmland if irrigated
- Prime farmland if irrigated and reclaimed of excess salts and sodium
- Prime farmland if irrigated and the product of I (soil erodibility) x C (climate factor) does not exceed 60
- Farmland of statewide importance
- Not prime farmland
- No Data



**PRELIMINARY, SUBJECT TO CHANGE**  
The information contained herein is believed to be accurate and suitable for limited internal uses only. Xcel Energy/ Public Service Company of Colorado makes no warranty as to the accuracy or suitability of any information contained herein for use by third parties. The accuracy of this map and the information depicted should be verified prior to use. The user shall assume all risk and responsibility for any and all damages, including consequential damages, which may arise from the user's reliance on this information.



# COLORADO'S POWER PATHWAY



**Legend**

- Existing Substation to be Expanded
- CPCN Study Area
- Fall 2021 Study Area
- Winter/Spring 2022 Study Area
- All Inclusive Study Area
- Eastern Review Area
- New 345kV Substation Siting Area

**Hydrology**  
(NHD 2020)

- Waterbody

**Transportation**  
(CDOT 2021, BTS 2020)

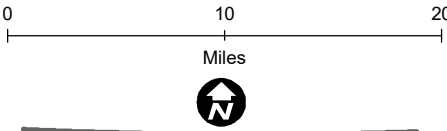
- Interstate
- U.S. Highway
- State Highway
- Local Road
- Railroad

**Boundary**  
(CDOT 2021, DOLA 2021)

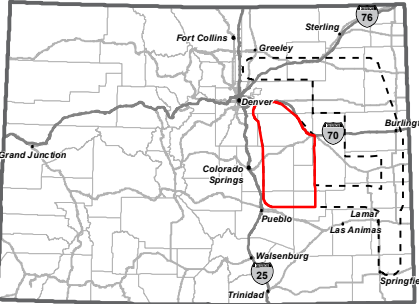
- Municipal Boundary
- County

**EPA Registered Facilities**  
(EPA 2021)

- Registered Facility

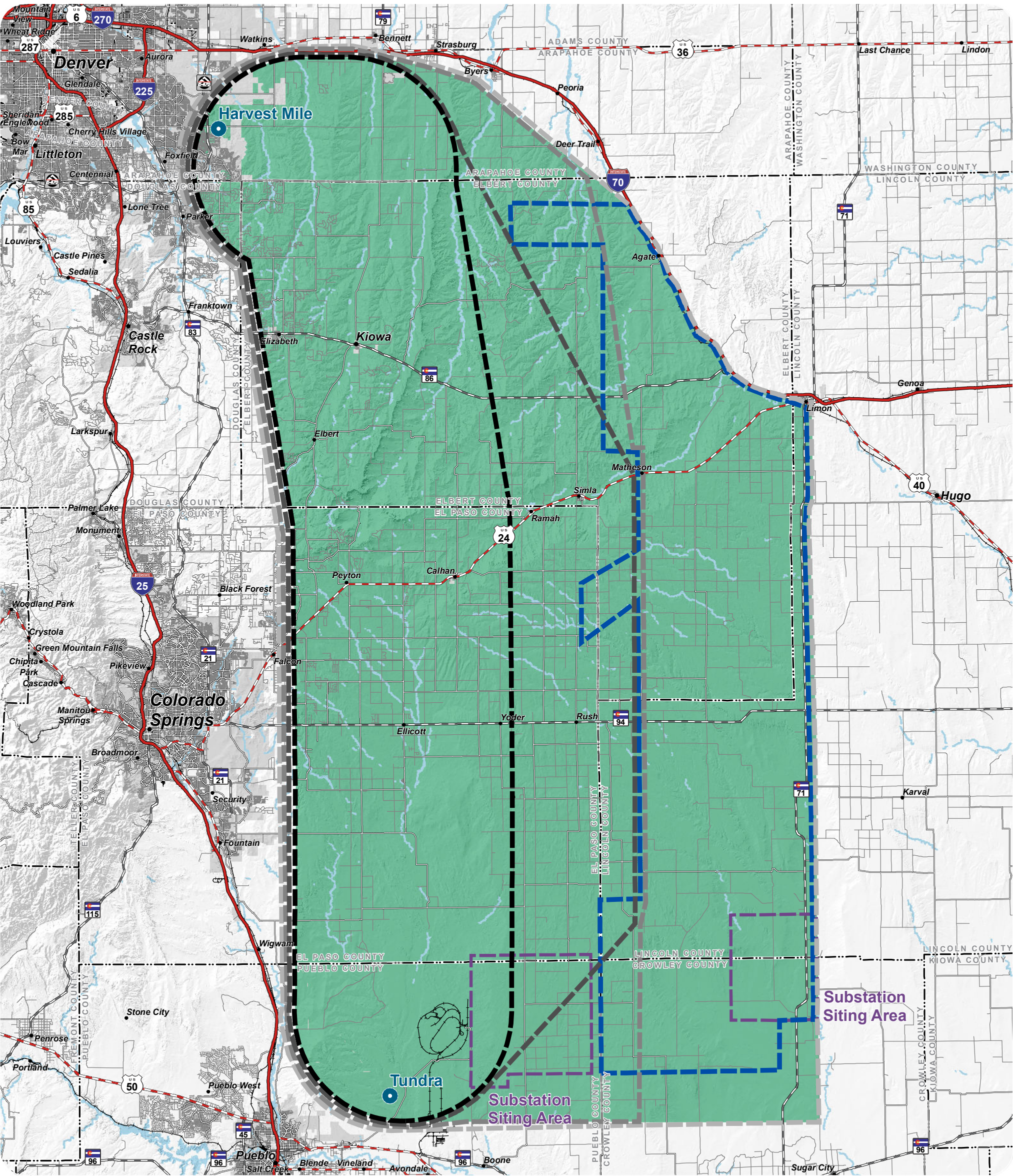


**PRELIMINARY, SUBJECT TO CHANGE**  
The information contained herein is believed to be accurate and suitable for limited internal uses only. Xcel Energy/ Public Service Company of Colorado makes no warranty as to the accuracy or suitability of any information contained herein for use by third parties. The accuracy of this map and the information depicted should be verified prior to use. The user shall assume all risk and responsibility for any and all damages, including consequential damages, which may arise from the user's reliance on this information.





# COLORADO'S POWER PATHWAY



Existing Substation to be Expanded

CPCN Study Area

Fall 2021 Study Area

Winter/Spring 2022 Study Area

All Inclusive Study Area

Eastern Review Area

New 345kV Substation Siting Area

Hydrology

(NHD 2020)

Waterbody

Transportation

(CDOT 2021, BTS 2020)

Interstate

U.S. Highway

State Highway

Local Road

Railroad

Boundary

(CDOT 2021, DOLA 2021)

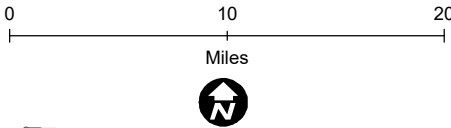
Municipal Boundary

County

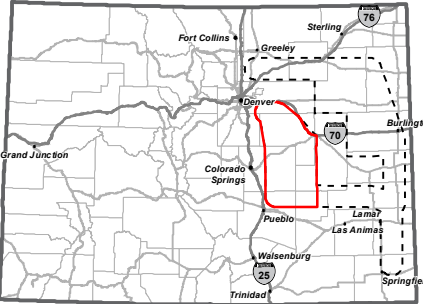
Karst Areas

(USGS 2017)

Gypsum Basin

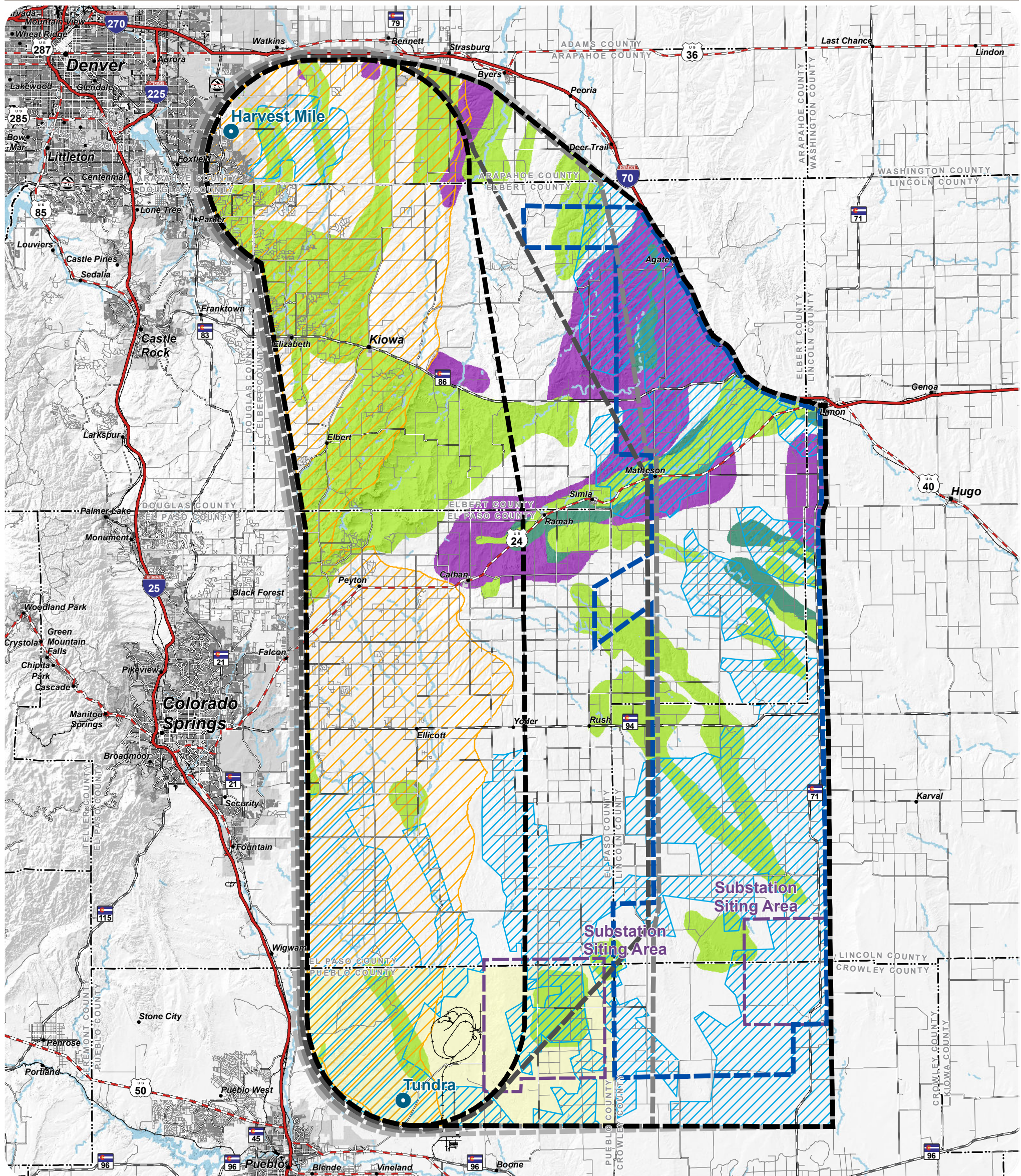


**PRELIMINARY, SUBJECT TO CHANGE**  
The information contained herein is believed to be accurate and suitable for limited internal uses only. Xcel Energy/ Public Service Company of Colorado makes no warranty as to the accuracy or suitability of any information contained herein for use by third parties. The accuracy of this map and the information depicted should be verified prior to use. The user shall assume all risk and responsibility for any and all damages, including consequential damages, which may arise from the user's reliance on this information.







# COLORADO'S POWER PATHWAY





### Legend

- 
- Existing Substation to be Expanded
- CPCN Study Area
- Fall 2021 Study Area
- Winter/Spring 2022 Study Area
- All Inclusive Study Area
- Eastern Review Area
- New 345kV Substation Siting Area








**Transportation**  
(CDOT 2021, BTS 2020)

-  Interstate
-  U.S. Highway
-  State Highway
-  Local Road
-  Railroad

## Boundary

- (CDOT 2021, DOLA 2021)
-  Municipal Boundary
-  County

**Wildlife Species Habitat**  
(CPW 2021)

- Mule Deer**
-  Concentration Area
  -  Winter Concentration Area
  -  Migration Corridor
- Pronghorn**
-  Concentration Area
- Swift Fox**
-  Overall Range
- Black-footed Ferret**
-  Release Site
- Prebble's meadow jumping mouse**
-  Overall Range

**PRELIMINARY, SUBJECT TO CHANGE**

The information contained herein is believed to be accurate and suitable for limited internal uses only. Xcel Energy / Public Service Company of Colorado makes no warranty as to the accuracy or suitability of any information contained herein for use by third parties. The accuracy of this map and the information depicted should be verified prior to use. The user shall assume all risk and responsibility for any and all damages, including consequential damages, which may arise from the user's reliance on this information.

Revised: 1/18/2023 | NOT FOR CONSTRUCTION

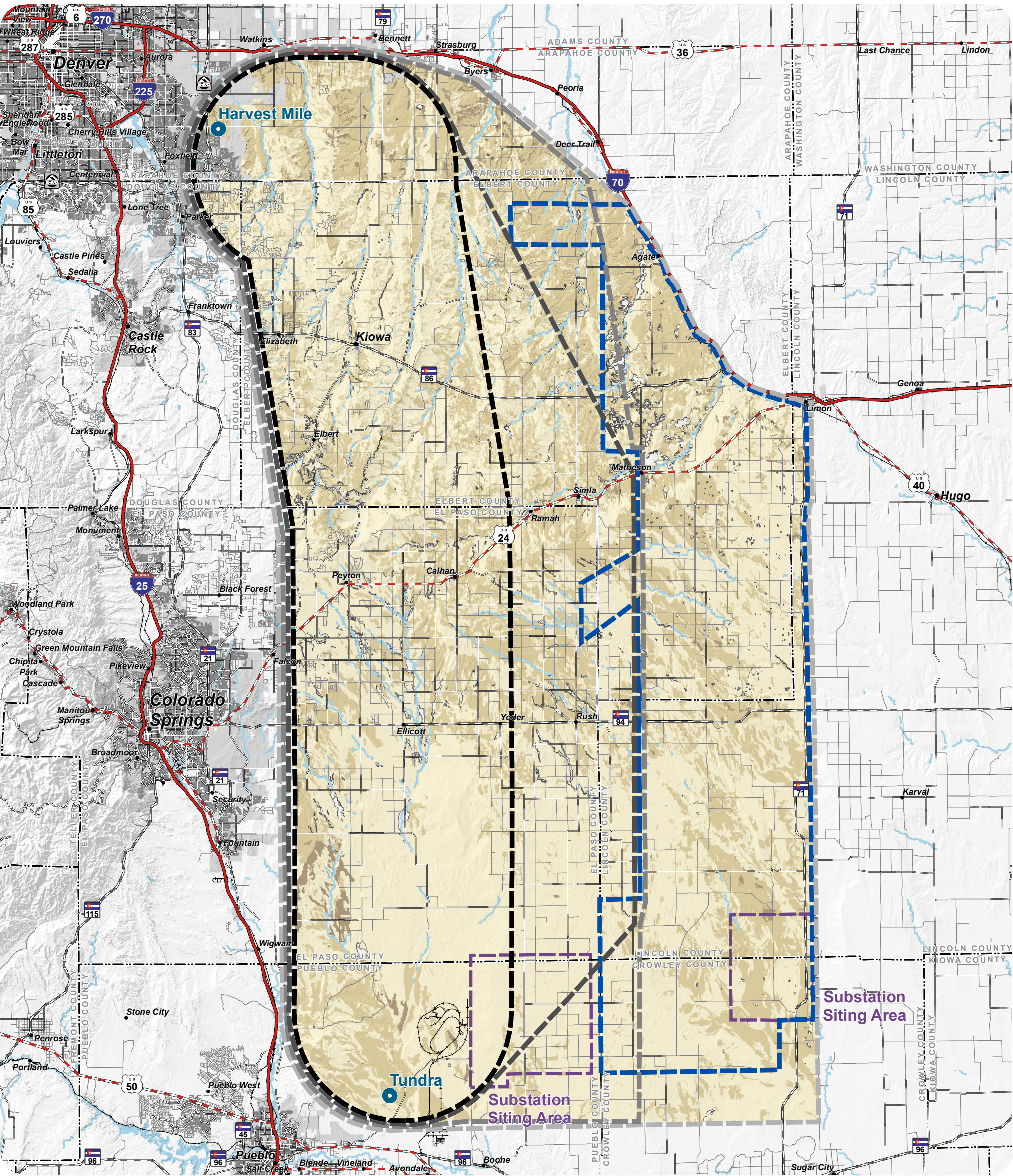
Path: P:\1163\_0025\_CO\_Power\_Pathway\GIS\Layouts\Segment\_5\Resource\_Maps\Wildlife\_Species\_Habitat.mxd

## Segment 5 - Tundra to Harvest Mile

## Wildlife Species Habitat



# COLORADO'S POWER PATHWAY



Existing Substation to be Expanded

CPCN Study Area

Fall 2021 Study Area

Winter/Spring 2022 Study Area

All Inclusive Study Area

Eastern Review Area

New 345kV Substation Siting Area

Hydrology

(NHD 2020)

Waterbody

Transportation

(CDOT 2021, BTS 2020)

Interstate

U.S. Highway

State Highway

Local Road

Railroad

Boundary

(CDOT 2021, DOLA 2021)

Municipal Boundary

County

Soil Erodibility

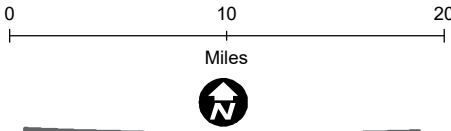
(NRCS SSURGO 2020)

Low

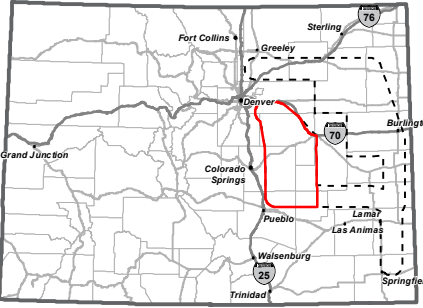
Moderate

High

No Data

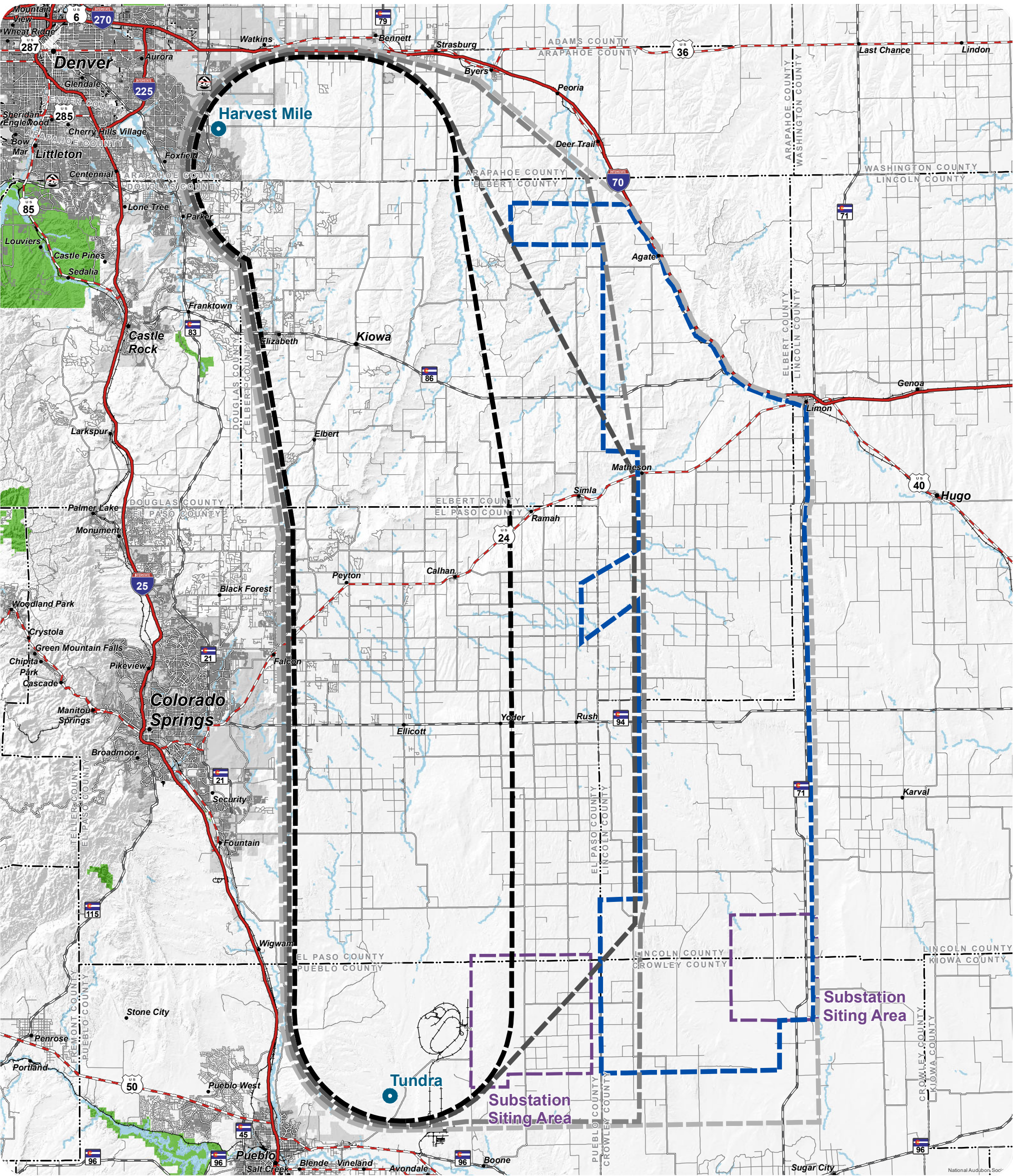


**PRELIMINARY, SUBJECT TO CHANGE**  
The information contained herein is believed to be accurate and suitable for limited internal uses only. Xcel Energy/ Public Service Company of Colorado makes no warranty as to the accuracy or suitability of any information contained herein for use by third parties. The accuracy of this map and the information depicted should be verified prior to use. The user shall assume all risk and responsibility for any and all damages, including consequential damages, which may arise from the user's reliance on this information.





# COLORADO'S POWER PATHWAY



**Legend**

- Existing Substation to be Expanded
- CPCN Study Area
- Fall 2021 Study Area
- Winter/Spring 2022 Study Area
- All Inclusive Study Area
- Eastern Review Area
- New 345kV Substation Siting Area

**Hydrology**  
(NHD 2020)

- Waterbody

**Transportation**  
(CDOT 2021, BTS 2020)

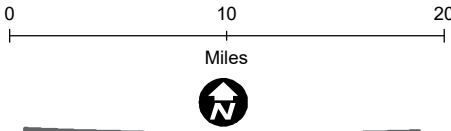
- Interstate
- U.S. Highway
- State Highway
- Local Road
- Railroad

**Boundary**  
(CDOT 2021, DOLA 2021)

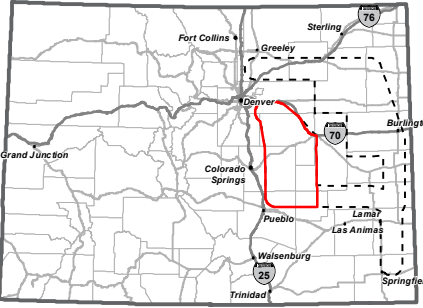
- Municipal Boundary
- County

**Important Bird Areas**  
(Audubon 2020)

- State

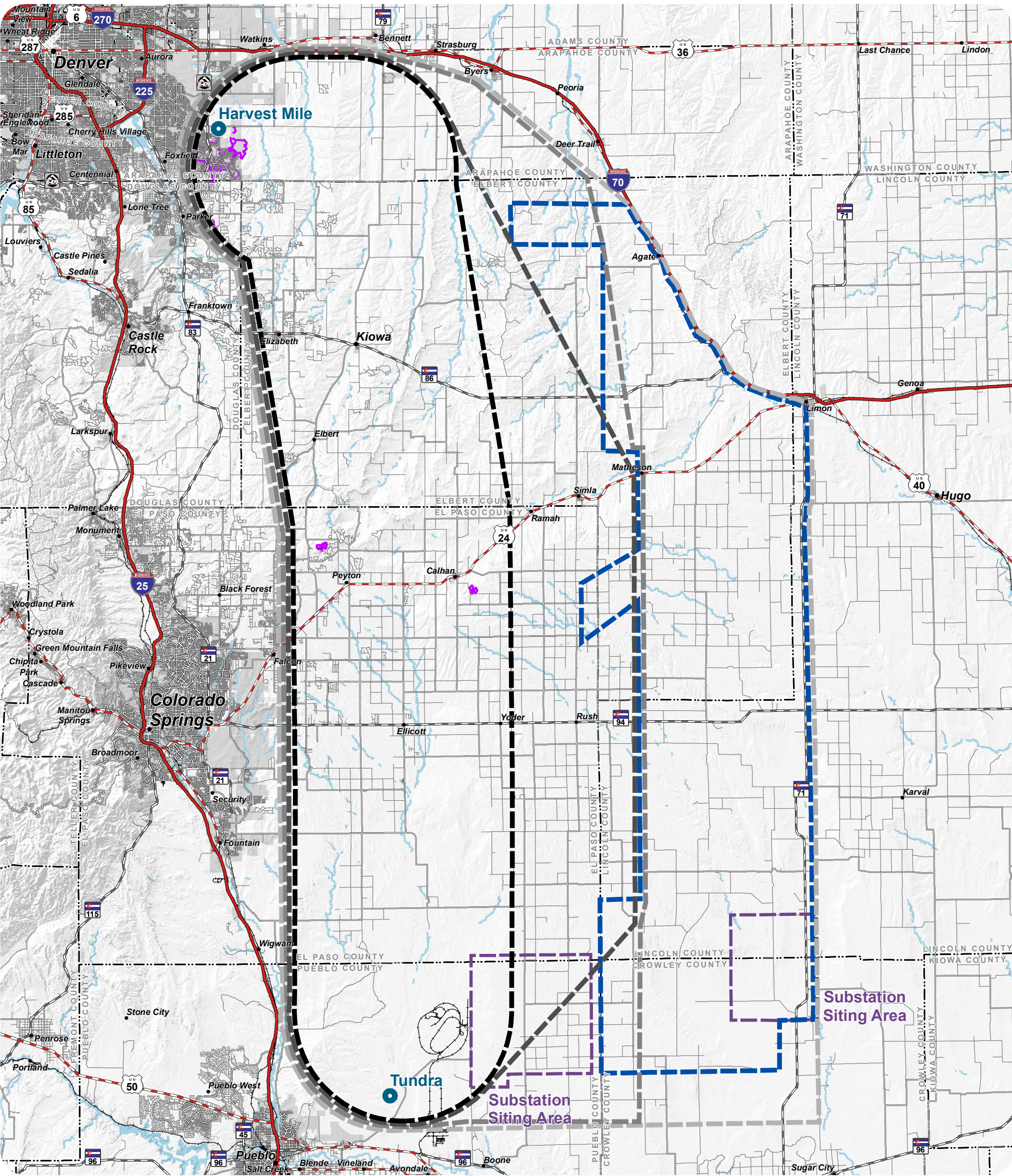


**PRELIMINARY, SUBJECT TO CHANGE**  
The information contained herein is believed to be accurate and suitable for limited internal uses only. Xcel Energy/ Public Service Company of Colorado makes no warranty as to the accuracy or suitability of any information contained herein for use by third parties. The accuracy of this map and the information depicted should be verified prior to use. The user shall assume all risk and responsibility for any and all damages, including consequential damages, which may arise from the user's reliance on this information.





# COLORADO'S POWER PATHWAY



**Legend**

- Existing Substation to be Expanded
- CPCN Study Area
- Fall 2021 Study Area
- Winter/Spring 2022 Study Area
- All Inclusive Study Area
- Eastern Review Area
- New 345kV Substation Siting Area

**Hydrology**  
(NHD 2020)

- Waterbody

**Transportation**  
(CDOT 2021, BTS 2020)

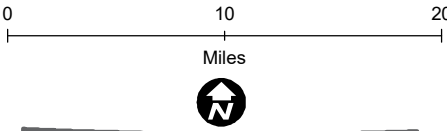
- Interstate
- U.S. Highway
- State Highway
- Local Road
- Railroad

**Boundary**  
(CDOT 2021, DOLA 2021)

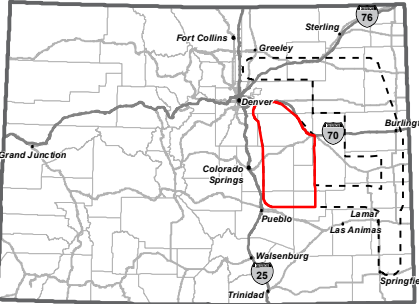
- Municipal Boundary
- County

**Recreation**  
(CPW 2021)

- Trail



**PRELIMINARY, SUBJECT TO CHANGE**  
The information contained herein is believed to be accurate and suitable for limited internal uses only. Xcel Energy/ Public Service Company of Colorado makes no warranty as to the accuracy or suitability of any information contained herein for use by third parties. The accuracy of this map and the information depicted should be verified prior to use. The user shall assume all risk and responsibility for any and all damages, including consequential damages, which may arise from the user's reliance on this information.



Revised: 1/18/2023 | NOT FOR CONSTRUCTION  
Path: P:\1163\_0025\_CO\_Power\_Pathway\GIS\Layouts\Segment\_5\Resource\_Maps\Recreation.mxd

## Segment 5 - Tundra to Harvest Mile

## Recreation