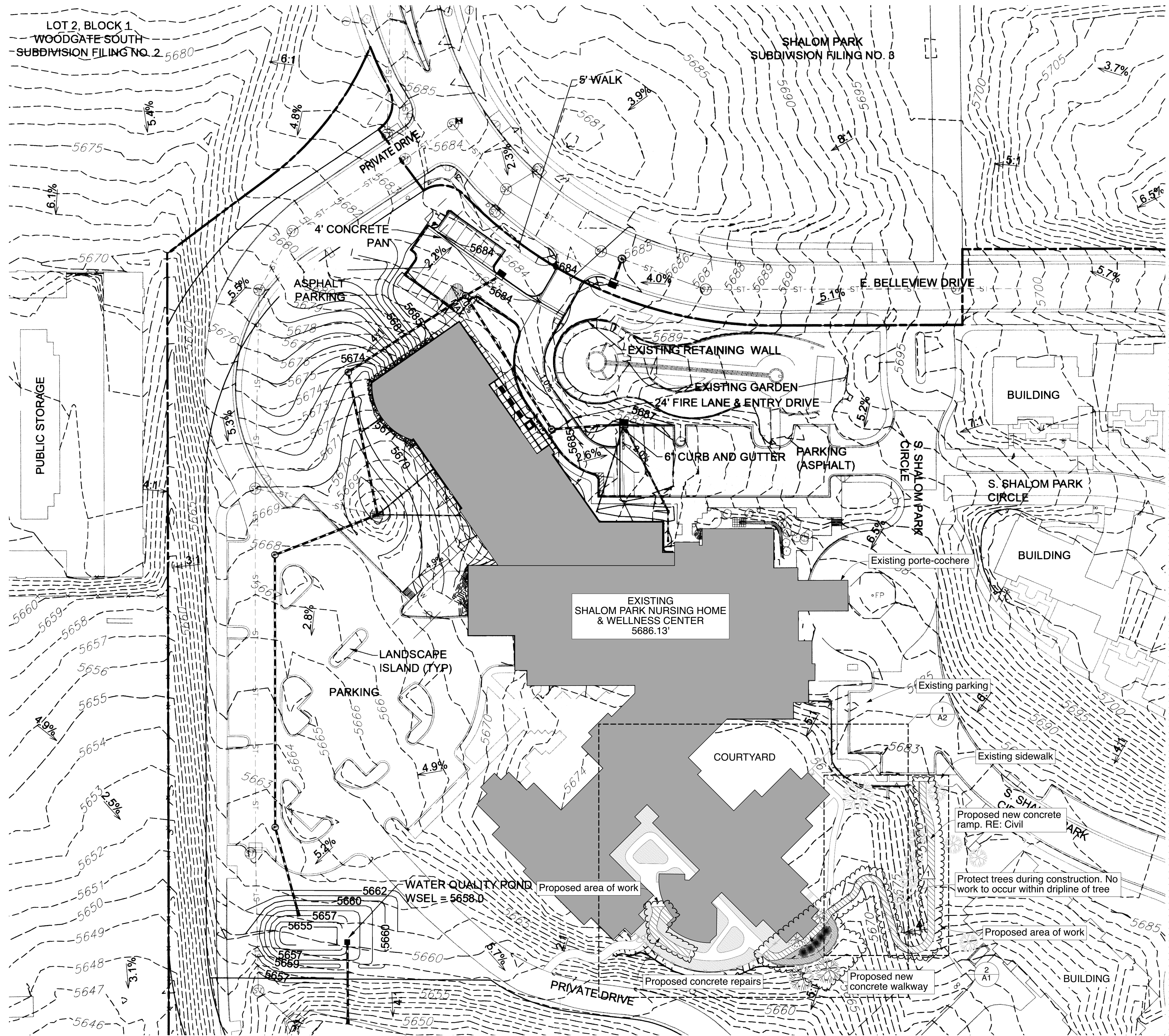


FULL SIZE: 24" x 36" HALF SIZE: 12" x 18"



Site Plan

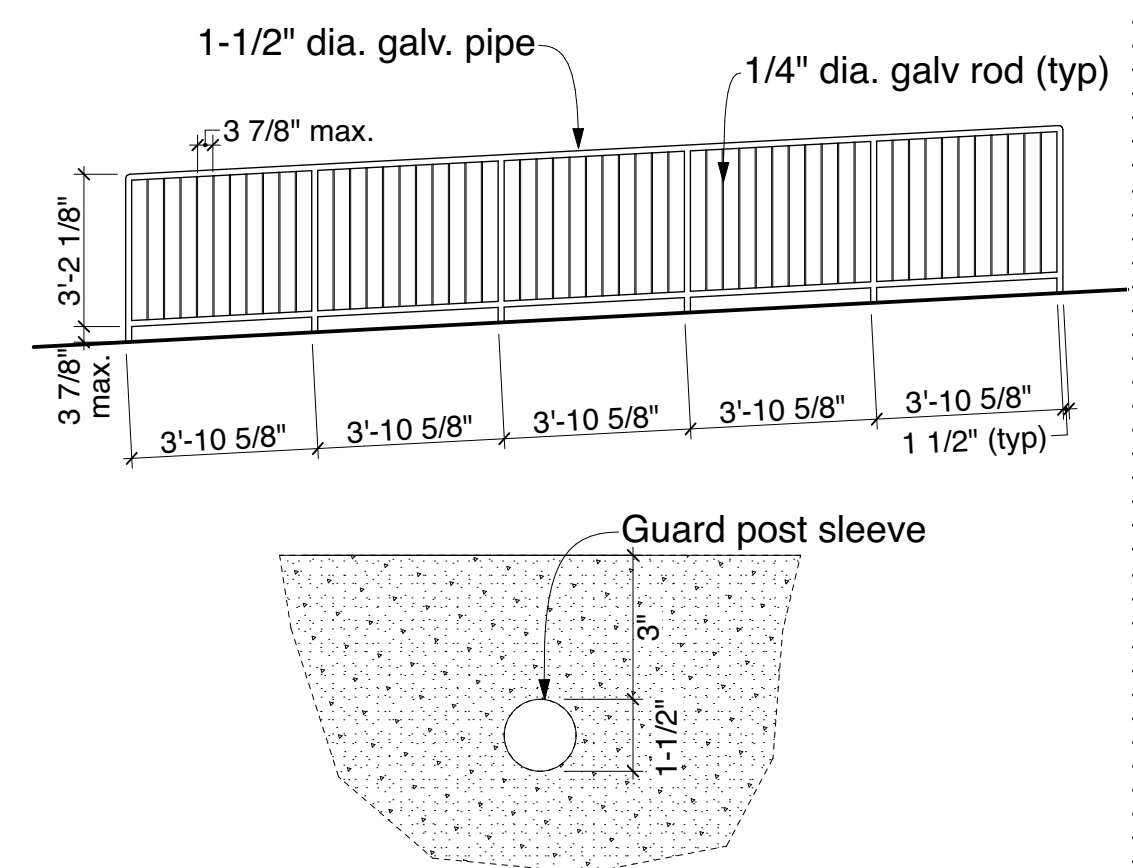
1

A1

SCALE: 1" = 40'

SITE PLAN GENERAL NOTES

- A RE: Civil Plans for the at-grade concrete walkway
RE: AmRamp and Structural Letter for the raised walkway alternate.
- B Both the at-grade and alternate raised ramp solutions are shown on this plan. Only one alternate will be built.
- C At existing walkways with slopes greater than 1:20 and less than 1:12, an ANSI compliant railing will be required. Slopes greater than 1:12 will need to be replaced with slopes less than 1:12.

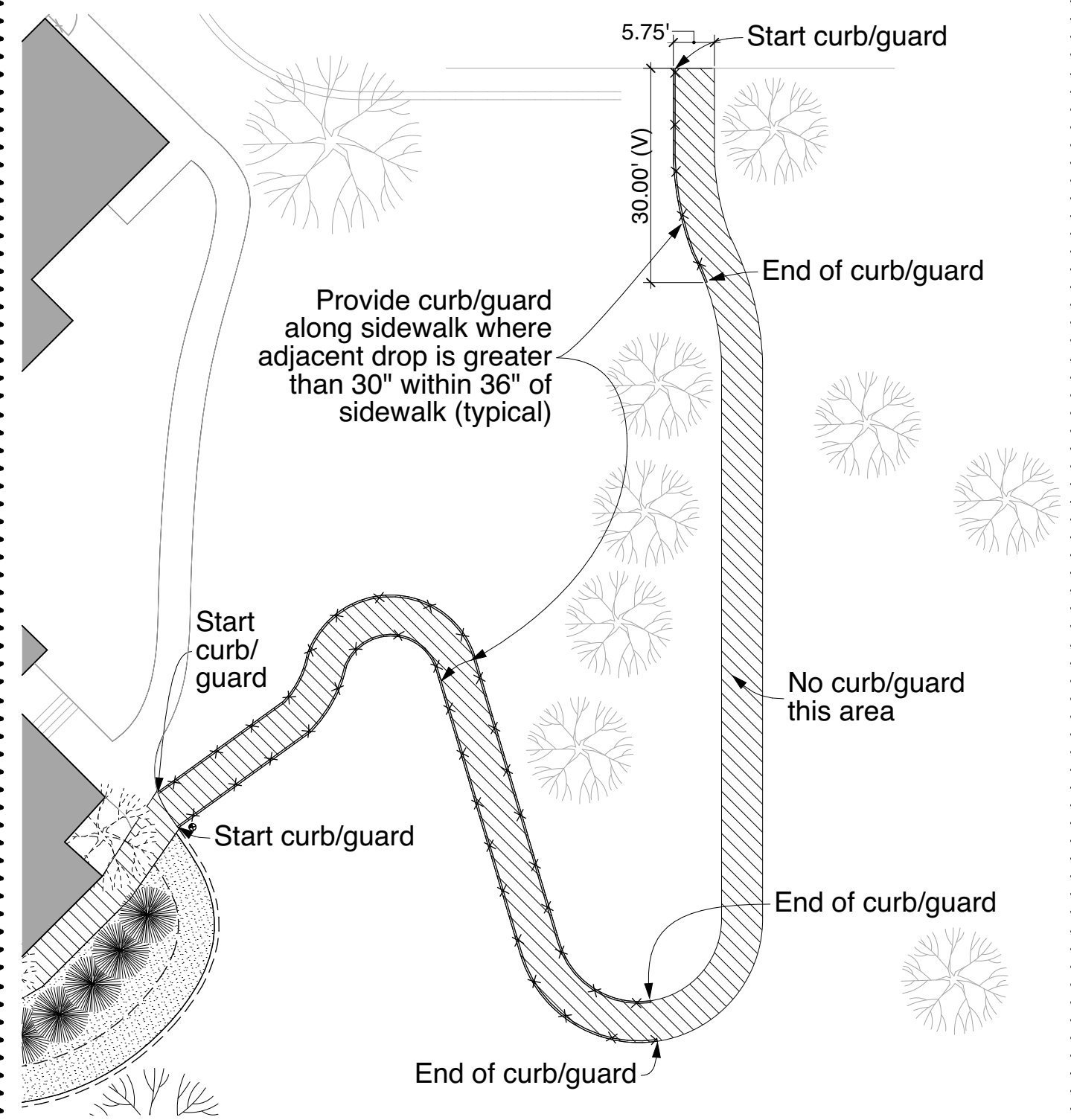


Typical Guard Elevation

3

A1

SCALE: 1/4" = 1'-0"



Guard Plan

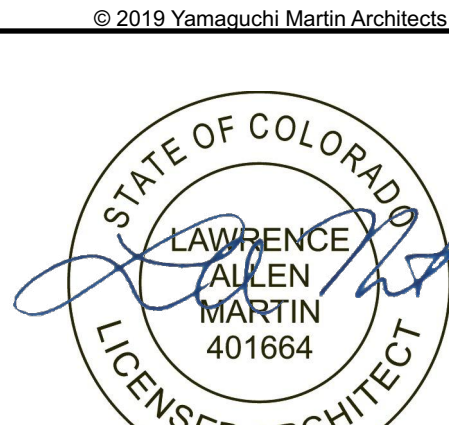
2

A1

SCALE: 1" = 20'

Shalom Park
ADA Walkway and Ramp

14800 East Bellevue Drive
Aurora, CO 80015



15 November 2019

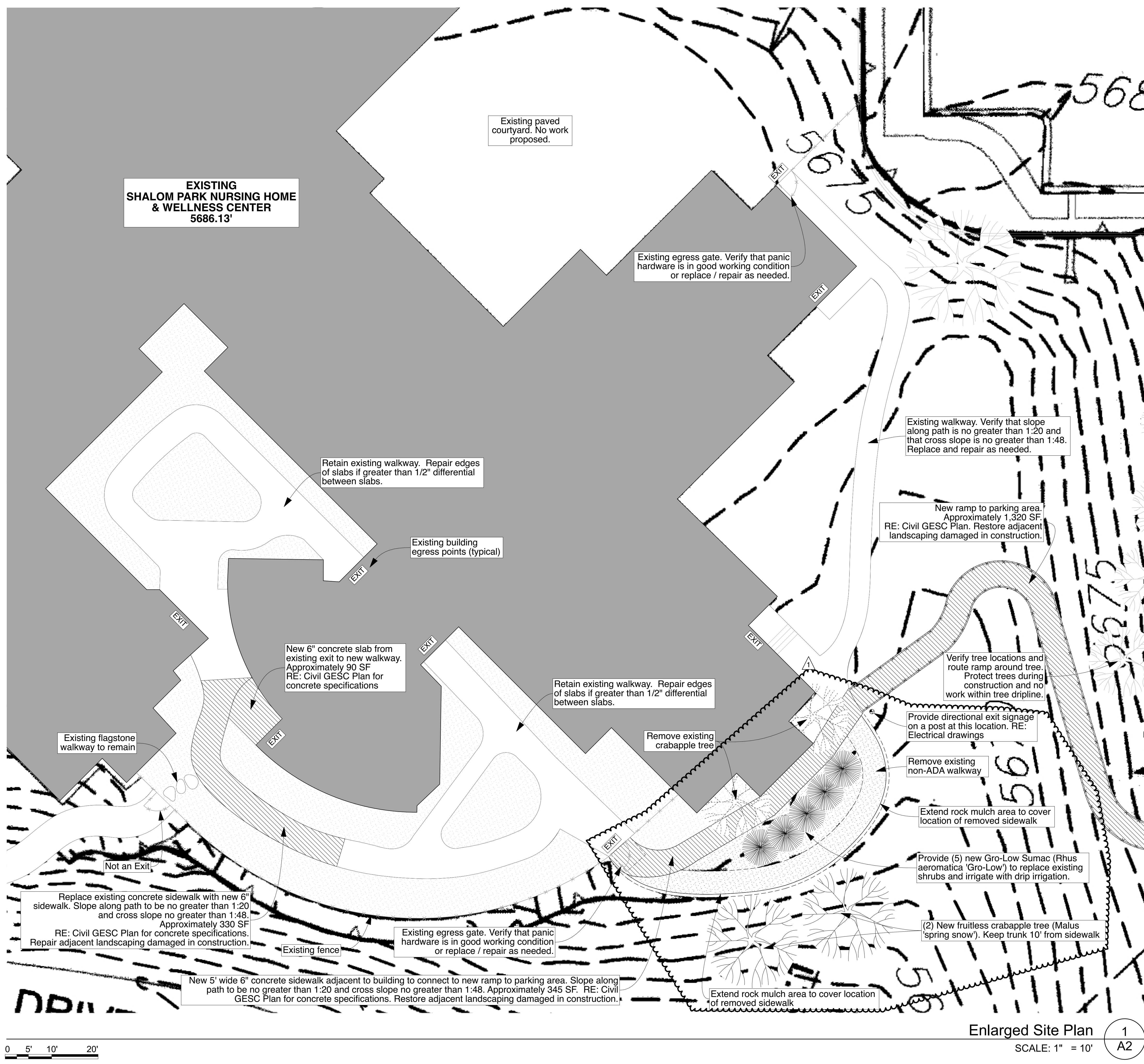
These documents not to be used for construction unless stamped with a valid professional's stamp and signature.

REV	DATE	PROJECT STATUS
-	9/26/2019	Const. Docs. Review
-	9/27/2019	Construction Documents
1	11/15/2019	Construction Documents
2	11/21/2019	Construction Documents

YMA PROJECT # 190725
DATE 11/15/2019
DRAWN BY MY
CHECKED BY LAM

Site Plan

A1



SITE PLAN GENERAL NOTES

- A RE: Civil Plans for the at-grade concrete walkway
RE: AmRamp and Structural Letter for the raised walkway alternate.
- B Both the at-grade and alternate raised ramp solutions are shown on this plan. Only one alternate will be built.
- C At existing walkways with slopes greater than 1:20 and less than 1:12, an ANSI compliant railing will be required. Slopes greater than 1:12 will need to be replaced with slopes less than 1:12.