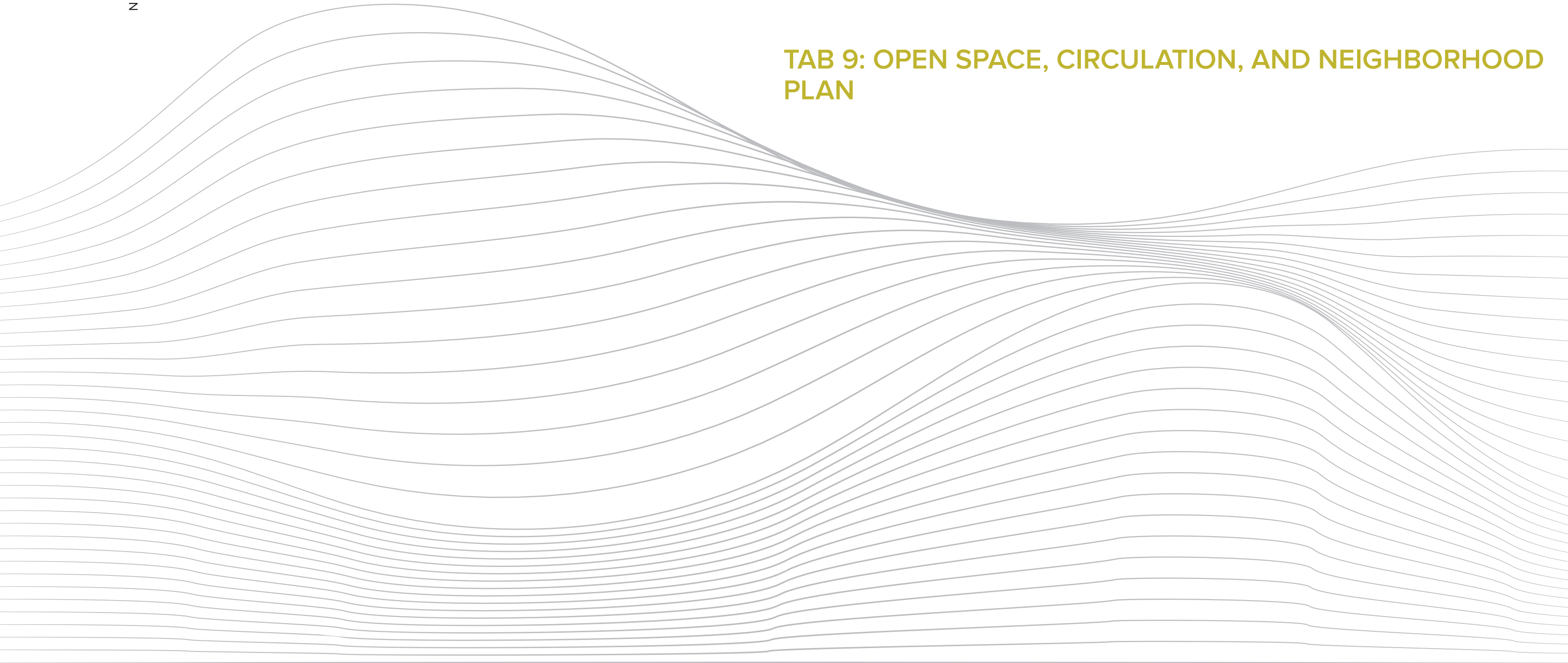
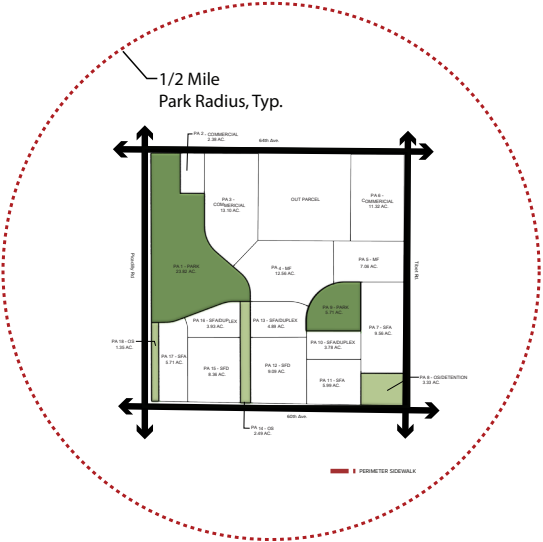
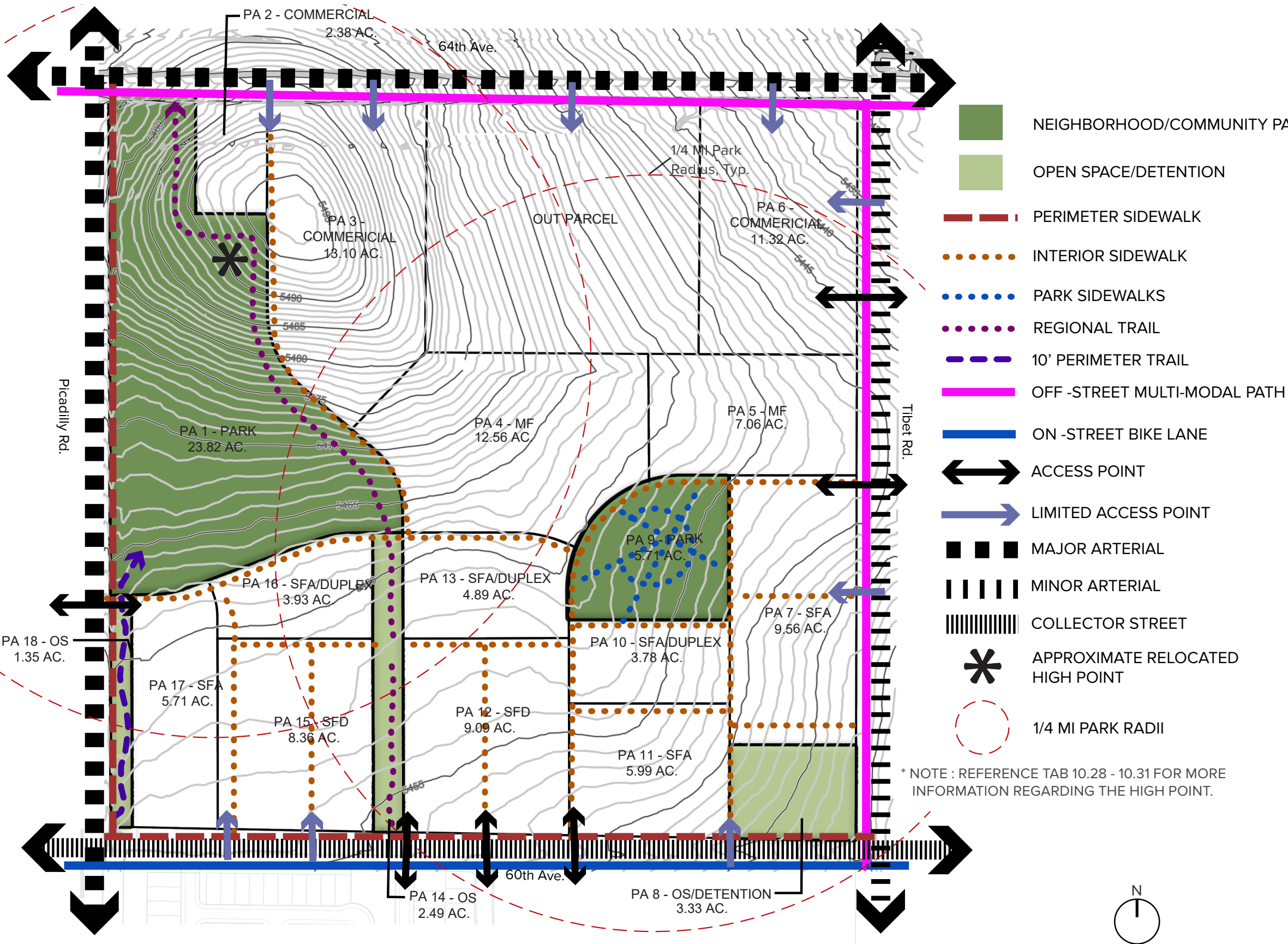


TAB 9: OPEN SPACE, CIRCULATION, AND NEIGHBORHOOD  
PLAN



TAB 9  
OPEN SPACE, CIRCULATION, AND NEIGHBORHOOD PLAN



PARK LAND DEDICATION REQUIREMENTS				
PLD TRACKING	EST POP.	PLD REQ. PER CODE (AC)	PLD PROPOSED (Gross AC)	PROS CREDITED ACREAGE (NET)
NEIGHBORHOOD PARKS (3AC/1000). TO BE MET ON SITE, ADDITIONAL ACREAGE TO COUNT TOWARDS OPEN SPACE.	2729	8.19	5.71	4.73
COMMUNITY PARKS (1.1AC/1000). TO BE PAID VIA CASH IN LIEU.	2729	3.00	23.82	20.52
OPEN SPACE (7.8 AC/1000). MAY BE MET PARTIALLY ON SITE WITH THE REMAINDER VIA CASH IN LIEU.	2729	21.28	3.84	1.92
TOTAL		32.47	33.37	27.17

\* NOTE : THE UNDEVELOPED NEIGHBORHOOD PARK ACREAGE REQUIRED WILL NEED TO BE PAID VIA A PARK DEVELOPMENT FEE AT THE TIME OF BUILDING PERMIT PER THE TRIGGER IN FORM J.



Open Space, Circulation, and Neighborhood Plan



Open Space, Circulation, and Neighborhood Plan

FORM J

Form J

Planning Area Designation (or feature in an area)	Description and Inventory of Facilities	Gross Acreage	Parks Dept. Credited Acreage (Net)	Facility Funding and Construction Responsibility	Final Ownership and Maintenance Responsibility	Trigger for Each Phase
PA-1	To meet PROS Community Park criteria; to be designed at the time of park master plan.	23.82	20.52	City of Aurora. Community park development fees to be collected with all building permits.	City of Aurora	To be determined in conjunction with City of Aurora PROS department.
PA-8	Open Space: Detention	3.33	0	HOA/District	HOA/District	The detention pond will be required in conjunction with the development of any planning area, other than PA-6.
PA-9	Park: Plaza, playground, shade structures, restrooms, Pickleball Courts, bike racks, planting beds, and benches. At least one inclusive play element will be provided at playground. The type of the inclusive equipment will be established at the Site Plan phase.	5.71	4.73	HOA/District	HOA/District	Site Plan to be submitted with abutting first planning area site plan. Completion with construction of second abutting planning area.
PA-14	Open Space: 10' Regional Trail Connection	2.49	1.42	HOA/District	HOA/District	Site plan submitted in conjunction with PA-15 and PA-16.
PA-18	Open Space: 10' Perimeter Trail Connection	1.35	0.5	HOA/District	HOA/District	Site plan submitted in conjunction with adjacent planning area PA-17.
	Arterial medians of 64th Ave and Picadilly. Medians to be dedicated to PROS, to meet PROS standards, if not already dedicated.			HOA/District	City of Aurora	To be at completion of full right of way dedication.
	Sub-total	36.7	27.17			

Director of Parks, Recreation and Open Space

Date:Signature:

NOTES:  
1) Detention areas may count toward open space if they have a recovery period of 24 hours. This credit can be established at the time of site plan.